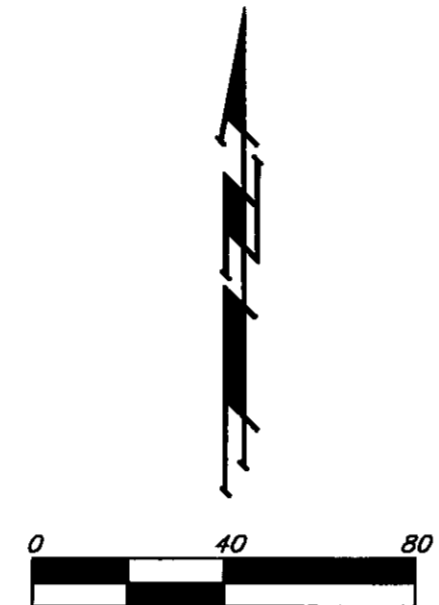
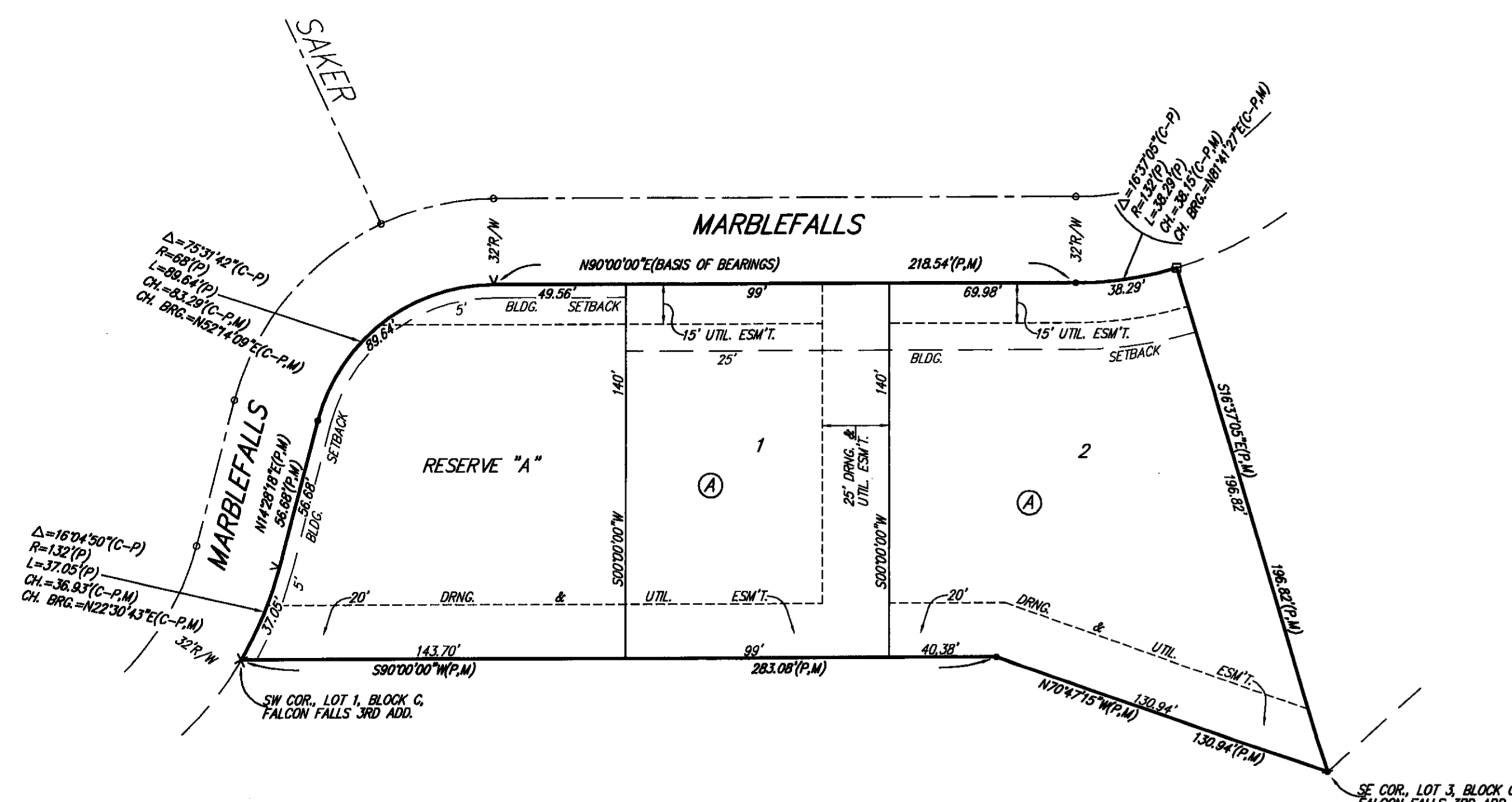


FALCON FALLS 4TH ADDITION WICHITA, SEDGWICK COUNTY, KANSAS

FILE COPY

11-13-08



- = #4 REBAR W/ "BAUGHMAN" CAP (SET)
 - = #4 REBAR W/ "BAUGHMAN" CAP (FOUND)
 - x = CROSS (FOUND)
 - ∧ = "V" NOTCH (SET)
 - = MAG-NAIL (SET)
- (M) = MEASURED
(P) = PLATTED
(C-P) = CALCULATED PER PLATTED INFO.

State of Kansas) SS We, Baughman Company, P.A., Surveyors in
Sedgwick County) aforesaid county and state do hereby certify that we have surveyed and
platted "FALCON FALLS 4TH ADDITION", Wichita, Sedgwick County, Kansas
and that the accompanying plat is a true and correct exhibit of the
property surveyed, described as and being a replat of all of Lots 1, 2,
and 3, Block C, Falcon Falls 3rd Addition, Wichita, Sedgwick County,
Kansas, together with that part of Reserve "C" as platted in said Falcon
Falls 3rd Addition lying north of and abutting the following described line:
Beginning at the SE corner of said Lot 2; thence N90°00'00"E along the
easterly extension of the south line of said Lot 2, 40.00 feet to the SW
corner of said Lot 3, and there ending.

Existing public easements and dedications
being vacated by virtue of K.S.A. 12-512(b).

All being situated in the SE1/4 of Sec. 22, Twp. 26-S,
R-1-E of the 6th P.M., Sedgwick County, Kansas.

Baughman Company, P.A.

Michael D. Conroy, Registered Professional Surveyor
Michael G. Conroy, Registered Professional Surveyor

This plat of "FALCON FALLS 4TH ADDITION",
Wichita, Sedgwick County, Kansas has been submitted to and approved by
the Wichita-Sedgwick County Metropolitan Area Planning Commission,
Wichita, Kansas.

Dated this _____ day of _____, 2008.
Wichita-Sedgwick County Metropolitan Area Planning Commission

_____, Chair
Darrell Downing

_____, Secretary
John L. Schlegel

This plat approved and all dedications
shown hereon accepted by the City Council of the City of Wichita,
Kansas, this _____ day of _____, 2008.

_____, Mayor
Carl Brewer

_____, City Clerk
Karen Sublett

Know all men by these presents that we,
the undersigned, have caused the land in the surveyors certificate to be
platted into Lots, a Block, and a Reserve to be known as "FALCON FALLS
4TH ADDITION", Wichita, Sedgwick County, Kansas. The utility easement is
hereby granted as indicated for the construction and maintenance of all
public utilities. The drainage and utility easements are hereby granted as
indicated for drainage purposes and for the construction and maintenance
of all public utilities. Reserve "A" is hereby reserved for landscaping,
berms, open space, drainage purposes, utilities as confined to easement,
parking, and swimming pools and related facilities. Reserve "A" shall be
owned and maintained by the homeowners association for the addition.
The Minimum Building Pad Elevations for the lowest opening to the
structures shall be as indicated on the face of the plat.

Heights, LLC, a Kansas
limited liability company

_____, Member
Jay W. Russell

Falcon Falls Homeowners Association,
a Kansas not-for-profit corporation

_____, President
Justin Pretzer

Reviewed in accordance with K.S.A. 58-2005
on this _____ day of _____, 2008.

_____, Deputy County Surveyor
Tricia L. Robello, L.S. #1246
Sedgwick County, Kansas

State of Kansas) SS The foregoing instrument acknowledged before
Sedgwick County) me, this 15th day of OCTOBER, 2008, by Jay W. Russell, Member
of Heights, LLC, a Kansas limited liability company, on behalf of the
limited liability company.

JUDITH M. TERHUNE
Notary Public - State of Kansas
My Appl. Expires 11-7-09

_____, Notary Public
JUDITH M. TERHUNE

My App't. Exp. 11-7-09

Entered on transfer record this _____ day
of _____, 2008.

State of Kansas) SS The foregoing instrument acknowledged before
Sedgwick County) me, this 15th day of NOVEMBER, 2008, by Justin Pretzer, President
of Falcon Falls Homeowners Association, a Kansas not-for-profit corporation,
on behalf of the corporation.

JUDITH M. TERHUNE
Notary Public - State of Kansas
My Appl. Expires 11-7-09

_____, Notary Public
JUDITH M. TERHUNE

My App't. Exp. 11-7-09

_____, County Clerk
Don Brace

We, the undersigned, holders of a mortgage on the
above described property, do hereby consent to this plat of "FALCON
FALLS 4TH ADDITION", Wichita, Sedgwick County, Kansas.

INTRUST Bank, N.A.

_____, E.V.P.
GARY D. SCHMITT

State of Kansas) SS This is to certify that this plat has been
Sedgwick County) filed for record in the office of the Register of Deeds, this _____ day
of _____, 2008 at _____ o'clock _____ M; and is duly recorded.

_____, Register of Deeds
Bill Meek

_____, Deputy
Tonya Buckingham

State of Kansas) SS The foregoing instrument acknowledged be-
Sedgwick County) fore me, this 15 day of OCTOBER, 2008, by GARY D. SCHMITT,
E.V.P. of INTRUST Bank, N.A., on behalf of the bank.

SUSAN K. COOK
Notary Public - State of Kansas
My Appl. Expires 11/2/08

_____, Notary Public
SUSAN K. COOK

My App't. Exp. 11/2/08

BENCHMARK:
"1" CUT ON E. HUBGUARD OF R.C.B.C.,
110' S. OF THE SE COR., SE1/4, SEC. 22,
TWP. 26-S, R-1-E.
ELEV. = 1359.54 NGVD29

MINIMUM BUILDING PAD ELEVATIONS FOR LOWEST OPENING TO THE STRUCTURES		
LOT	BLOCK	ELEVATION
RESERVE "A"	—	1348.0
1, 2	A	1348.0

NOTE:
A master grading plan for drainage has been developed for this subdivision
and is on file with the City of Wichita, Kansas. All drainage easements,
right-of-ways, or reserves shall remain at established grades or as
modified with the approval of the City Engineer of the City of Wichita,
Kansas. No obstructions which impede the flow of this drainage system
shall be allowed.