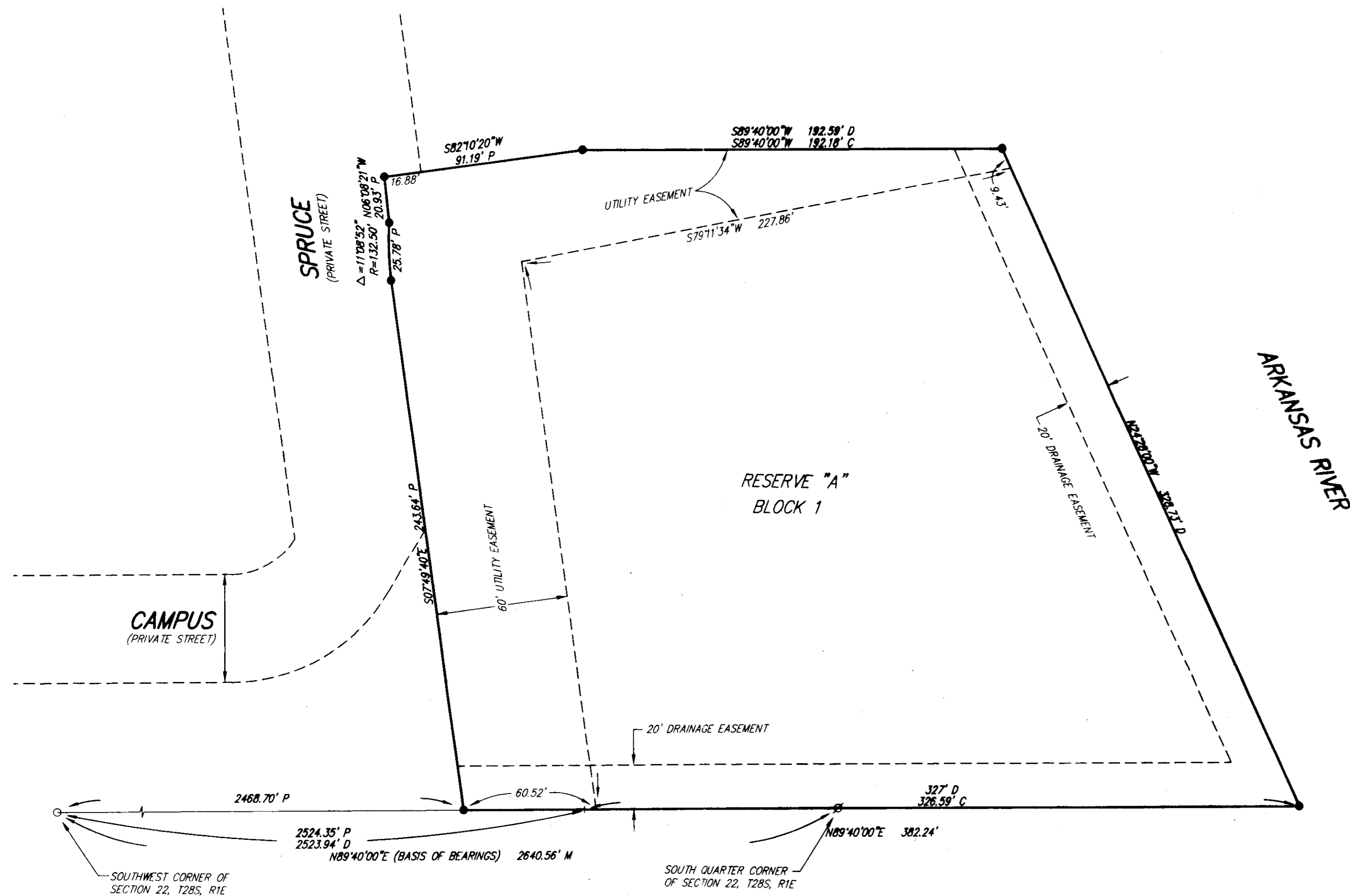


8-25-08
Pat 2008-33

RIVER OAKS MOBILE HOME PARK 2ND ADDITION

Wichita, Sedgwick County, Kansas



M = Measured
P = Plotted (River Oaks Mobile Home Park)
C = Calculated from plotted

SURVEY MARKER LEGEND

- 1/2" IRON PIPE IN THIMBLE (FOUND, ORIGIN UNKNOWN)
- ⊙ 3/4" IRON PIPE (FOUND, ORIGIN UNKNOWN)
- 5/8" REBAR W/RUGGLES & BOHM CAP (SET)

BENCH MARK: CITY OF WICHITA BENCHMARK
42.00' NORTH OF THE CENTER LINE OF 55TH ST. S.
AND 40.70' WEST OF THE CENTER LINE OF HYDRAULIC
ELEVATION = 1263.59 (NOV029)

MINIMUM BUILDING PAD ELEVATION FOR LOWEST OPENING
IN STRUCTURES = 1265.50 (NOV029)



State of Kansas)
Sedgwick County) SS

We, Ruggles & Bohm, P.A., Land Surveyors in aforesaid county and state, do hereby certify that, under the supervision of the undersigned, we have surveyed and platted "RIVER OAKS MOBILE HOME PARK 2ND ADDITION", Wichita, Sedgwick County, Kansas, and that the accompanying plat is a true and correct exhibit of the property surveyed, described as follows:

Reserve "C", in River Oaks Mobile Home Park, Wichita, Sedgwick County, Kansas; AND a tract of land in Section 22, T28S, R1E of the 6th P.M., Sedgwick County, Kansas, described as follows: Beginning at a point on the South section line, North 89°40' East, 2523.94 feet from the Southwest corner of said Section 22; thence continuing along said line, 327 feet to a point on the west right of way of the Wichita and Valley Center Riverside Levee, thence along said west right of way, North 24°28' West, 328.73 feet, thence South 89°40' West, 192.59 feet, thence South 00°20' East, 300 feet to the point of beginning.

All public easements and dedications are hereby vacated by virtue of K.S.A. 12-512(b).

Ruggles & Bohm, P.A.

Thomas C. Ruggles
Land Surveyor

Know all men by these presents that we, the undersigned, have caused the land described in the surveyor's certificate to be platted into a Reserve, and a Block, to be known as "RIVER OAKS MOBILE HOME PARK 2ND ADDITION", Wichita, Sedgwick County, Kansas. The Utility Easement is hereby granted for the construction and maintenance of all public utilities. Reserve "A" is hereby reserved for maintenance and storage buildings, lighting, parking, landscaping, and utilities confined to easements. The reserve is to be owned and maintained by River Oaks Mobile Home Park. A drainage plan has been developed for this plat; the property shall remain at established grades, or as modified with the approval of the City Engineer, and unobstructed to allow for the conveyance of storm water.

Mobile Home Living, Inc.

Larry M. Womack
President

State of Kansas)
Sedgwick County) SS

The foregoing instrument acknowledged before me, this 18 day of AUGUST, 2008, by Larry M. Womack, President, on behalf of Mobile Home Living, Inc.

Larry Cantrell
Notary Public

My appointment expires 4-29-2009

We the undersigned, holders of a mortgage on a portion of the above described property, do hereby consent to this plat of "RIVER OAKS MOBILE HOME PARK 2ND ADDITION", Wichita, Sedgwick County, Kansas.

Equity Bank, N.A.

Patrick Harbert
Andover Market President

State of Kansas)
Sedgwick County) SS

The foregoing instrument acknowledged before me this 19th day of August, 2008, by Patrick Harbert, Andover Market President, on behalf of the Bank.

Julia Moore
Notary Public

My appointment expires 11-11-2010

This plat of "RIVER OAKS MOBILE HOME PARK 2ND ADDITION", Wichita, Sedgwick County, Kansas, has been submitted to and approved by the Wichita-Sedgwick County Metropolitan Area Planning Commission, Wichita, Kansas.

Dated this _____ day of _____, 2008.

Wichita-Sedgwick County Metropolitan Area Planning Commission

M.S. Mitchell
Chair

John L. Schlegel
Secretary

This plat approved and all dedications shown hereon accepted by the City Council of the City of Wichita, Kansas, this _____ day of _____, 2008.

At the Direction of the City Council

Carl Brewer
Mayor

Karen Sublett
City Clerk

Reviewed in accordance with K.S.A. 58-2005 on this _____ day of _____, 2008.

L. Robbello
Deputy County Surveyor
Sedgwick County Kansas

Entered on transfer record this _____ day of _____, 2008.

Don Brace
County Clerk

State of Kansas)
Sedgwick County) SS

This is to certify that this plat has been filed for record in the office of the Register of Deeds, this _____ day of _____, 2008, at _____ o'clock _____ M, and is duly recorded.

Bill Meek
Register of Deeds

Tonya Buckingham
Deputy

