

11-17-08  
2008.78

FINAL PLAT

# THE MOORINGS 11TH ADDITION

AN ADDITION TO WICHITA, SEDGWICK COUNTY, KANSAS

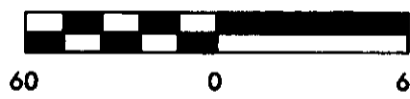
### LEGEND

Date of Survey: Feb., 2007

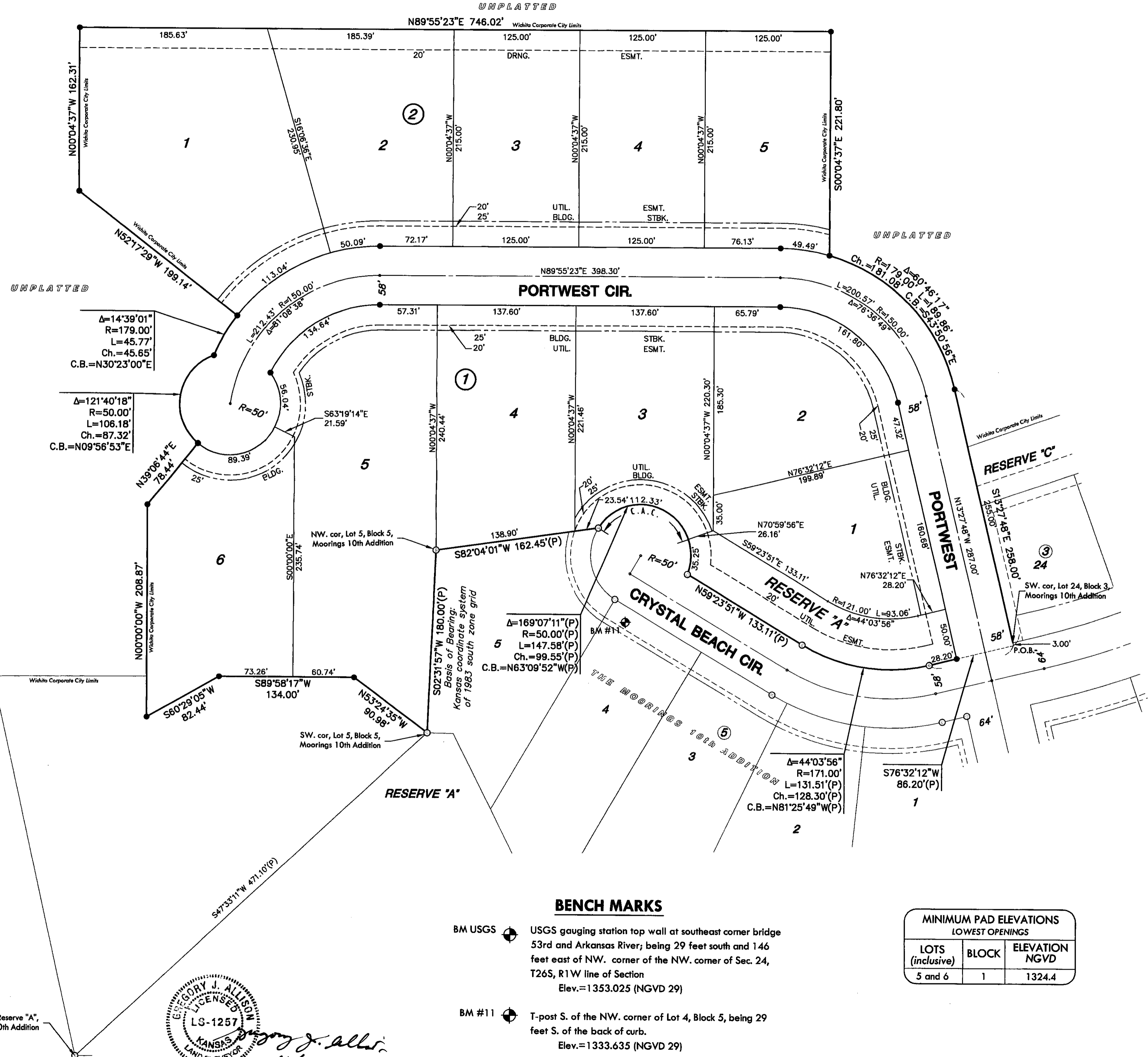
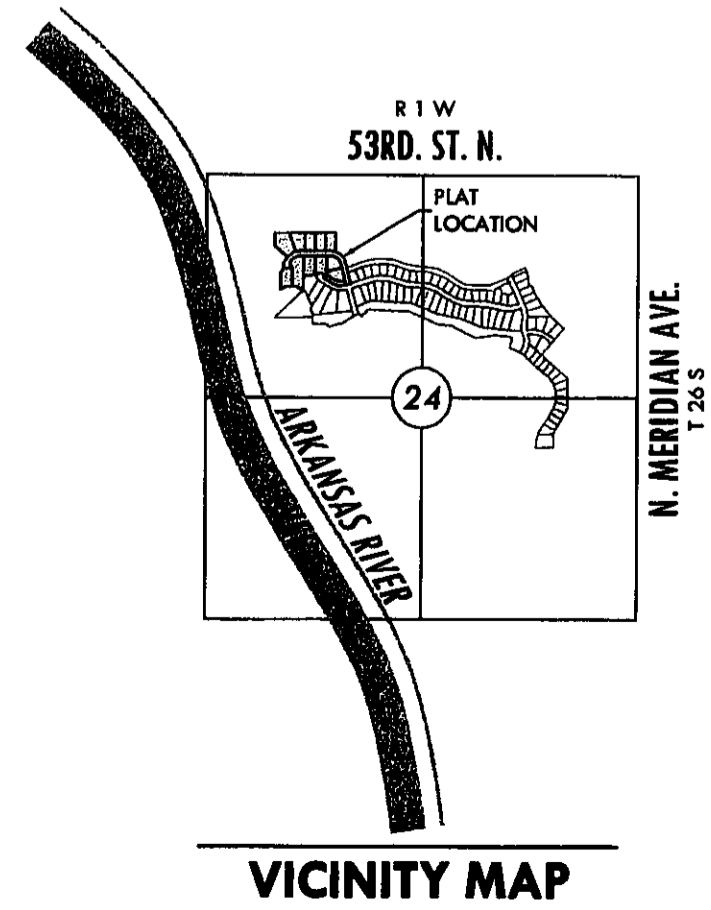
- = Found 5/8" rebar w/ MKEC  
CLS 39 id. cap
- = Set 5/8" Rebar w/ MKEC  
CLS 39 id. cap
- (P) = Platted
- C.A.C. = Complete Access Control



1"=60' / 1:720



Basis of Bearing: Kansas coordinate system of 1983 south zone grid bearing of S02°31'57"W along the W. Line of Lot 5, Block 5, Moorings 10th Addition.



### BENCH MARKS

- BM USGS USGS gauging station top wall at southeast corner bridge 53rd and Arkansas River; being 29 feet south and 146 feet east of NW. corner of the NW. corner of Sec. 24, T26S, R1W line of Section  
Elev.=1353.025 (NGVD 29)
- BM #11 T-post S. of the NW. corner of Lot 4, Block 5, being 29 feet S. of the back of curb.  
Elev.=1333.635 (NGVD 29)

MINIMUM PAD ELEVATIONS LOWEST OPENINGS		
LOTS (inclusive)	BLOCK	ELEVATION NGVD
5 and 6	1	1324.4

REGISTRY J. ALLISON  
LICENSED  
KANSAS  
LAND SURVEYOR  
11/12/08

Pg 2/2  
FILE COPY

# FINAL PLAT

## THE MOORINGS 11TH ADDITION

### AN ADDITION TO WICHITA, SEDGWICK COUNTY, KANSAS

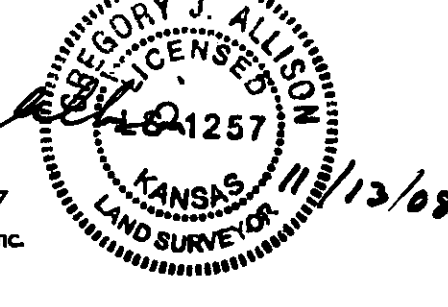
#### CERTIFICATE OF SURVEY

I, Gregory J. Allison, a registered land surveyor in Kansas, do hereby certify that I have been in responsible charge of surveying and platting of "THE MOORINGS 11TH ADDITION", an addition to Wichita, Sedgwick County, Kansas, into Lots, Blocks, a Reserve and Streets, the same being accurately set forth in the accompanying plat and described herein:

A tract of land lying within the Northwest Quarter of Section 24, Township 26 South, Range 1 West, of the 6th Principal Meridian, Wichita, Sedgwick County, Kansas, said tract being more particularly described as follows:  
BEGINNING at a point on the north line of Crystal Beach Street right-of-way 3.00 feet south of the southwest corner of Lot 24, Block 3, The Moorings Tenth Addition, an addition to the City of Wichita, Sedgwick County, Kansas; thence on a platted bearing along the north line of Crystal Beach Circle right-of-way for the next four courses, S76°32'12"W, 86.20 feet to a point on a curve to the right; thence along said curve 131.51 feet; said curve having a central angle of 44°03'56", a radius of 171.00 feet and a long chord distance of 128.30 feet, bearing N81°25'49"W; thence N59°23'51"W, 133.11 feet to a point on a non-tangent curve to the left; thence along said curve 147.58 feet to the northeast most corner of Lot 5, Block 5, said addition; said curve having a central angle of 169°07'11", a radius of 50.00 feet and a long chord of 99.55', bearing N63°09'52"W; thence along the north line of said Lot 5, S82°04'01"W, 162.45 feet; thence along the west line of said Lot 5 on a platted bearing of S02°31'57"W, 180.00 feet to the southwest corner of said Lot 5; thence N53°24'35"W, 90.98 feet; thence S89°58'17"W, 134.00 feet; thence S60°29'05"W, 82.44 feet; thence N00°00'00"W, 208.87 feet; thence N39°06'44"E, 78.44 feet to a point on a non-tangent curve to the right; thence along said curve, 106.18 feet; said curve having a central angle of 121°40'18", a radius of 50.00 feet and a long chord distance of 87.32 feet, bearing N09°56'53"E to a point on a non-tangent curve to the right; thence along said curve, 45.77 feet; said curve having a central angle of 14°39'01", a radius of 179.00 feet and a long chord distance of 45.65 feet, bearing N30°23'00"E; thence N52°17'29"W, 199.14 feet; thence N00°04'37"W, 162.31'; thence N89°55'23"E, 746.02 feet; thence S00°04'37"E, 221.80 feet to a point on a non-tangent curve to the right; thence along said curve, 189.86 feet; said curve having a central angle of 60°46'17", a radius of 179.00 feet and a long chord distance of 181.08 feet, bearing S43°50'56"E; thence on the west lines of said Lot 24 and Reserve "C" said addition extended, S13°27'48"E, 258.00 feet to the POINT OF BEGINNING.

I hereby certify that the details of this plat are correct to the best of my knowledge and belief this 13<sup>th</sup> day of November, 2008.

Gregory J. Allison, PE, LS #1257  
MKEC Engineering Consultants, Inc.  
411 North Webb Road  
Wichita, Kansas 67206



#### PLANNING COMMISSION CERTIFICATE

This plat of "THE MOORINGS 11th ADDITION" has been submitted to and approved by the Wichita-Sedgwick County Metropolitan Area Planning Commission, Wichita, Kansas.

Dated this \_\_\_ day of \_\_\_\_\_, 2008

WICHITA-SEDGWICK COUNTY METROPOLITAN AREA PLANNING COMMISSION

\_\_\_\_\_, Chair  
Darrell Downing, Chair

Attest: \_\_\_\_\_, Secretary  
John L. Schlegel, Secretary

AFFIX SEAL

#### TRANSFER RECORD

STATE OF KANSAS, SEDGWICK COUNTY) ss:

Entered on transfer record this \_\_\_ day of \_\_\_\_\_, 2008

\_\_\_\_\_, County Clerk  
Dan Brace, County Clerk

AFFIX SEAL

#### REGISTER OF DEEDS CERTIFICATE

This is to certify that this instrument was filed for record in the Register of Deeds office this \_\_\_ day of \_\_\_\_\_, 2008, at \_\_\_ o'clock \_\_\_M, and is duly recorded.

\_\_\_\_\_, Register of Deeds  
Bill Meek, Register of Deeds

Attest: \_\_\_\_\_, Deputy  
Tonya E. Buckingham, Deputy

AFFIX SEAL

#### GOVERNING BODY CERTIFICATE

The dedications shown on this plat are hereby accepted and this plat is hereby approved by the governing body of the City of Wichita, Kansas.

Dated this \_\_\_ day of \_\_\_\_\_, 2008

At the direction of the City Council.

\_\_\_\_\_, Mayor  
Carl Brewer, Mayor

Attest: \_\_\_\_\_, City Clerk  
Karen Sublett, City Clerk

AFFIX SEAL

#### OWNER'S CERTIFICATE

Know all men by these presents that the undersigned property owner of the land above set forth in the Registered Land Surveyor's Certificate, has caused the same to be surveyed and platted into Lots, Blocks, Reserves and Streets the same to be known as "THE MOORINGS 11TH ADDITION," an addition to Wichita, Sedgwick County, Kansas.

Easements for the construction and maintenance of public utilities and drainage, as indicated on the accompanying plat are hereby granted to the public.

The streets are hereby dedicated to and for the use of the public.

All abutters right of access to or from the Crystal Beach Circle over and across the south line of Lot 3, Block 1, are hereby granted to the public as indicated on sheet one of two.

Reserve "A" is platted for monuments, sidewalks, berms, landscaping, irrigation, drainage, utilities confined by easements, and open space. The Reserve shall be owned and maintained by the owners and or a homeowner's association and reserved for the uses stated.

A drainage plan has been developed for this plat. Drainage easements, rights-of-way, or reserves shall remain at established grades or as modified with the approval of the applicable City or County Engineer, and unobstructed to allow for the conveyance of storm water.

Lots 5 and 6, Block 1 are required to adhere to the minimum pad elevation as shown on the "Minimum Pad Elevations".

CBB NORTHLAKES, LLC, a Kansas limited liability company

Kurt Bachman, Member  
Kurt Bachman, Member  
Brad Bachman, Member  
Brad Bachman, Member

STATE OF KANSAS, SEDGWICK COUNTY) ss:

This instrument was acknowledged before me on this 13<sup>th</sup> day of November, 2008, Brad Bachman and Kurt Bachman, Members, CBB Northlakes, LLC, a Kansas limited liability company.

IN WITNESS WHEREOF, I have hereunto set my hand and affixed my official seal, the day and year last above written.

Cynthia A. Womack, Notary Public  
CYNTHIA A. WOMACK, Notary Public - State of Kansas  
My Term Expires: Feb. 7, 2009

#### COUNTY SURVEYOR

Reviewed in accordance with K.S.A. 58-2005 on this \_\_\_ day of \_\_\_\_\_, 2008.

\_\_\_\_\_, Deputy County Surveyor  
Tricia L. Robello, LS #1246  
Deputy County Surveyor  
Sedgwick County, Kansas