

FLIGHTSAFETY SECOND ADDITION

Sedgwick County, Kansas

12-2-08
Sub 2008-80

State of Kansas)
Sedgwick County) SS

We, Ruggles & Bohm, P.A., Land Surveyors in aforesaid county and state, do hereby certify that, under the supervision of the undersigned, we have surveyed and platted "FLIGHTSAFETY SECOND ADDITION", Sedgwick County, Kansas, and that the accompanying plat is a true and correct exhibit of the property surveyed, described as follows:

That Part of the NE1/4 of Sec. 16, T27S, R2E of the 6th P.M., Sedgwick County, Kansas, described as commencing at the northeast corner of said NE1/4; thence South along the east line of said NE1/4 on a Kansas Zone South Grid Bearing of S01°03'27"E, 2,145.03 feet; thence S88°56'33"W, perpendicular to said east line, 50.00 feet for a place of beginning, being 10.00 feet east of the southeast corner of Lot 9, Block 1, Kiser West Addition, an addition to Wichita, Sedgwick County, Kansas; thence S01°03'27"E, parallel with said east line, 330.00 feet; thence S88°56'33"W, perpendicular to said east line, 660.00 feet; thence N01°03'27"W, parallel with said east line, 330.00 feet to the extended south line of said Lot 9; thence N88°56'33"E, perpendicular to said east line and along said extended south line, 660.00 feet to the place of beginning.

All public easements and dedications are hereby vacated by virtue of K.S.A. 12-512(b).

Ruggles & Bohm, P.A.

Thomas C. Ruggles
Thomas C. Ruggles
Land Surveyor
1-26-18
KANSAS

Know all men by these presents that we, the undersigned, have caused the land described in the surveyor's certificate to be platted into a Lot, a Reserve, a Block and a Street, to be known as "FLIGHTSAFETY SECOND ADDITION", Sedgwick County, Kansas. The street is hereby dedicated to and for the use of the public. Reserve "A" is hereby reserved for drainage, drainage structures, landscaping, irrigation, walls, berms, and utilities confined to easements. The reserve is to be owned and maintained by owner of Lot 1. Access Controls as indicated are hereby granted to the appropriate governing body. A drainage plan has been developed for this plat and all drainage easements shall remain at established grades, or as modified with the approval of the applicable City or County Engineer, and unobstructed to allow for the conveyance of storm water.

Hawker Beechcraft Corporation
Sidney E. Anderson
Sidney E. Anderson,
Chief Financial Officer

State of Kansas)
Sedgwick County) SS

The foregoing instrument acknowledged before me, this 25th day of December, 2008, by Sidney E. Anderson, Chief Financial Officer, on behalf of Hawker Beechcraft Corporation.

PAMELA E. BAILEY
Notary Public - State of Kansas
By Appl. Expires Sept. 26, 2008
Pamela E. Bailey Notary Public

My appointment expires 9/26/09

This plat of "FLIGHTSAFETY SECOND ADDITION", Sedgwick County, Kansas, has been submitted to and approved by the Wichita-Sedgwick County Metropolitan Area Planning Commission, Wichita, Kansas. Dated this ___ day of ___, 200__.

Wichita-Sedgwick County Metropolitan Area Planning Commission

Darrell Downing
Chair

John L. Schlegel
Secretary

This plat approved and all dedications shown hereon accepted by the City Council of the City of Wichita, Kansas, this ___ day of ___, 200__.

At the Direction of the City Council

Carl Brewer
Mayor

Karen Sublett
City Clerk

This plat is approved and all dedications shown hereon, if any, accepted by the Board of County Commissioners of Sedgwick County, Kansas, this ___ day of ___, 200__.

Chairman
ATTEST:

County Clerk

Reviewed in accordance with K.S.A. 58-2005 on this 26th day of November, 2008.
Michelle Robello
Michelle Robello, LS #1246
Deputy County Surveyor
Sedgwick County Kansas

Entered on transfer record this ___ day of ___, 200__.

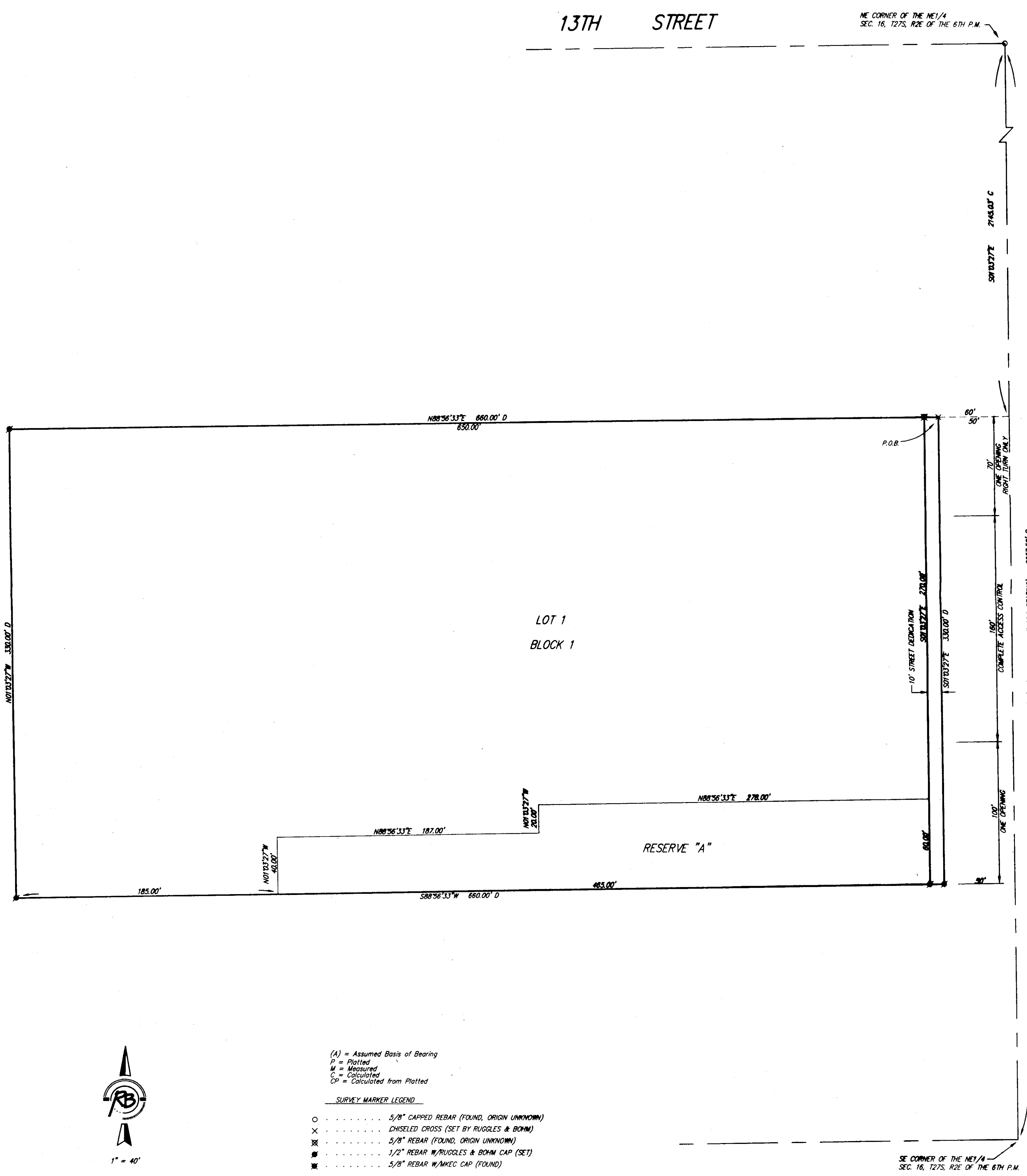
County Clerk

State of Kansas)
Sedgwick County) SS

This is to certify that this plat has been filed for record in the office of the Register of Deeds, this ___ day of ___, 200__, at ___ o'clock ___ M., and is duly recorded.

Bill Meek
Register of Deeds

Tonya Buckingham
Deputy



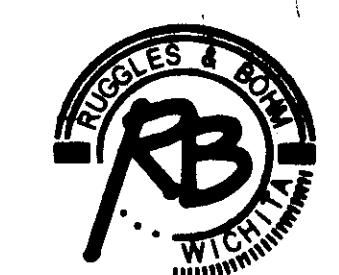
- (A) = Assumed Basis of Bearing
P = Platted
M = Measured
C = Calculated
CP = Calculated from Platted
- SURVEY MARKER LEGEND**
- 5/8" CAPPED REBAR (FOUND, ORIGIN UNKNOWN)
 - × CHISELED CROSS (SET BY RUGGLES & BOHM)
 - ⊗ 5/8" REBAR (FOUND, ORIGIN UNKNOWN)
 - 1/2" REBAR W/RUGGLES & BOHM CAP (SET)
 - 5/8" REBAR W/AKEC CAP (FOUND)

BENCH MARK: CITY OF WICHITA BENCH MARK AT GREENWICH AND 9TH STREET NORTH, 42.60 FEET EAST OF THE CENTERLINE OF GREENWICH AND 4.00 FEET SOUTH OF THE 1/2 SECTION LINE ELEVATION = 1389.18 (NGVD29)

ON-SITE BENCH MARK: CHISELED SQUARE ON THE TOP OF CURB ON THE WEST SIDE OF GREENWICH, 2.145 FEET SOUTH OF THE CENTERLINE OF 13TH STREET NORTH ELEVATION = 1391.88 (NGVD29)



1" = 40'



Ruggles & Bohm, P.A.
Engineering, Surveying, Land Planning
984 North Main
Wichita, Kansas 67203
www.rbkansas.com
(318) 264-8008
(318) 264-4821 fax
E-mail: info@rbkansas.com

DWG FILE: SURVEY BASE
PROJECT NO. 3329P
NOVEMBER 13, 2008