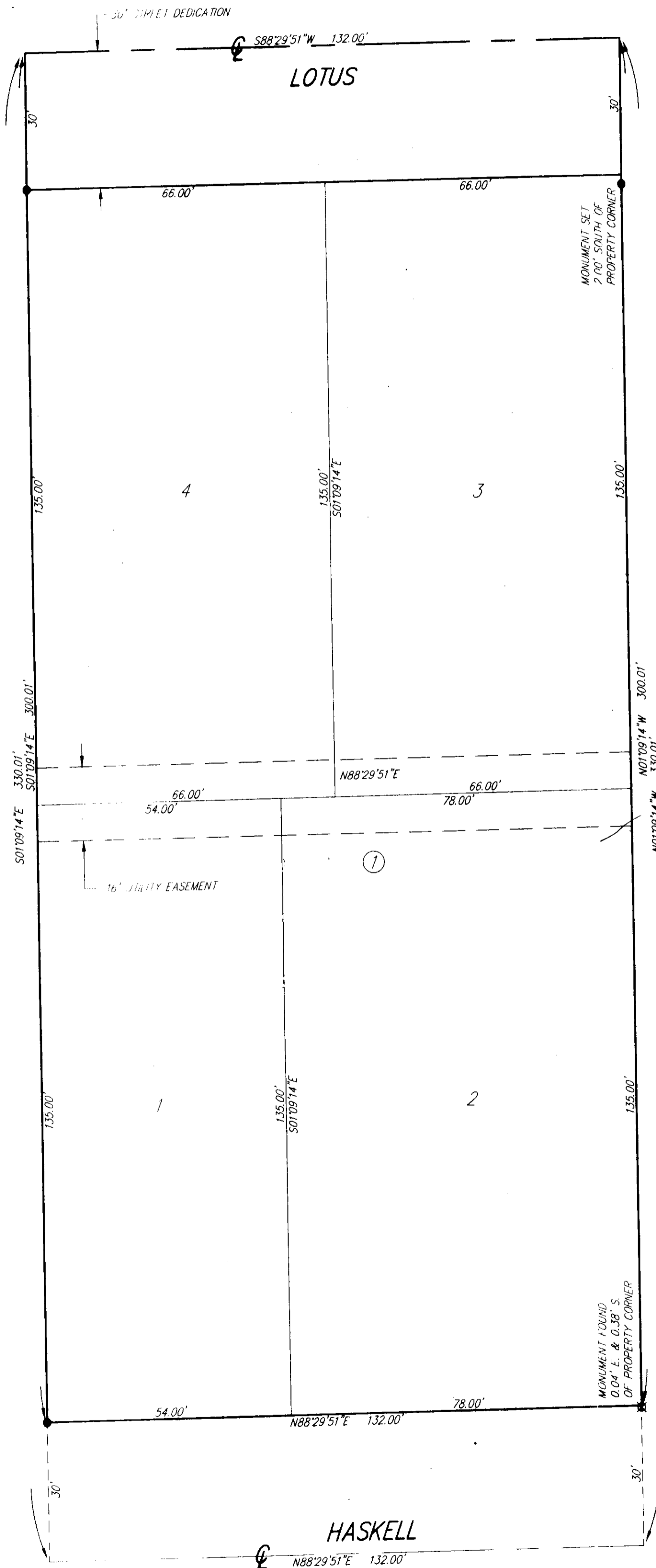


LEDGESTONE ADDITION

FILE COPY

LEDGESTONE ADDITION

Wichita, Sedgwick County, Kansas



1" = 20'

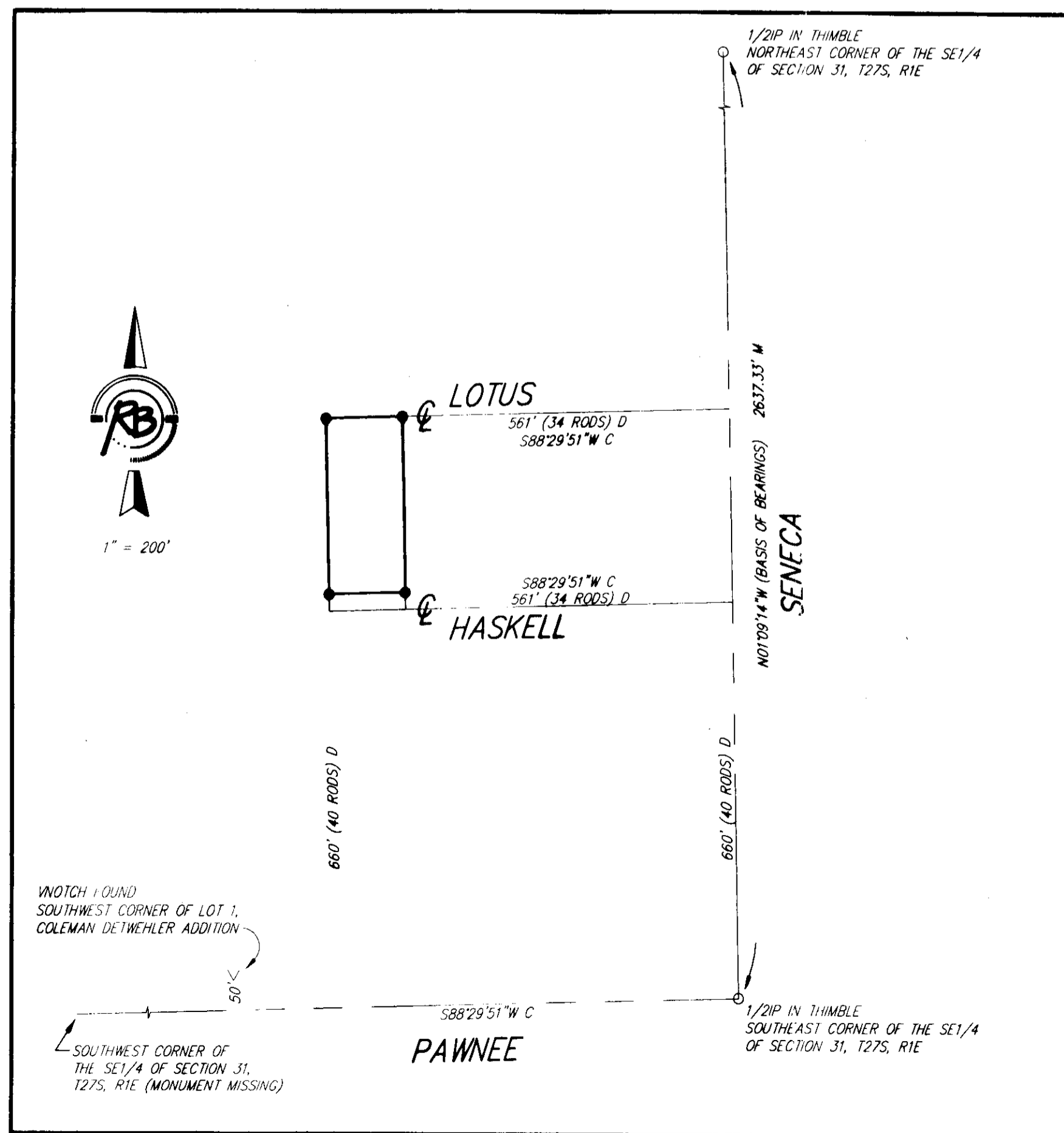
M = Measured
C = Calculated
D = Described

SURVEY MARKER LEGEND

- 1/2" IRON PIPE IN THIMBLE (FOUND - ORIGIN UNKNOWN)
- ⊗ 1/2" IRON PIPE (FOUND - ORIGIN UNKNOWN)
- ▽ CHISELED V NOTCH (FOUND - ORIGIN UNKNOWN)
- 1/2" REBAR W/RUGGLES & BOHM CAP (SET)

BENCH MARK: CHISELED SQUARE ON TOP OF CURB AT THE WEST CURB RETURN AT LYDIA & RITA. ELEVATION = 1289.62 (NGVD29)

ON-SITE BENCH MARK: CHISELED SQUARE ON TOP OF CURB AT THE NORTHEAST CORNER OF LOT 1, BLOCK B, ROBERTS-BRENNER-KLEIN ADDITION, WICHITA, SEDGWICK COUNTY, KANSAS. ELEVATION = 1286.68 (NGVD29)



1" = 200'

NOTCH FOUND
SOUTHWEST CORNER OF LOT 1,
COLEMAN DETREHLER ADDITION

SOUTHWEST CORNER OF
THE SE 1/4 OF SECTION 31,
1275, R1E (MONUMENT MISSING)

State of Kansas) SS
Sedgwick County)

We, Ruggles & Bohm, P.A., Land Surveyors in aforesaid county and state, do hereby certify that, under the supervision of the undersigned, we have surveyed and platted "LEDGESTONE ADDITION", Wichita, Sedgwick County, Kansas, and that the accompanying plat is a true and correct exhibit of the property surveyed, described as follows:

A tract beginning 40 rods North and 34 rods West of the Southeast Corner of the Southeast Quarter of Section 31, Township 27 South, Range 1 East of the 6th P.M., Sedgwick County, Kansas; thence North 20 rods; thence West 8 rods; thence South 20 rods; thence East 8 rods to the point of beginning; except the South 30 feet thereof for road purposes.

All public easements and dedications are hereby vacated by virtue of K.S.A. 12-512(b).

Ruggles & Bohm, P.A.

Thomas C. Ruggles 11-26-08 Land Surveyor
Thomas C. Ruggles

Know all men by these presents that we, the undersigned, have caused the land described in the surveyor's certificate to be platted into Lots, a Block and a Street, to be known as "LEDGESTONE ADDITION", Wichita, Sedgwick County, Kansas. The street is hereby dedicated to and for the use of the public. Utility Easements are hereby granted for the construction and maintenance of all public utilities. A drainage plan has been developed for this plat; the property shall remain at established grades, or as modified with the approval of the City Engineer, and unobstructed to allow for the conveyance of storm water.

Ledgestone Homes, Inc., a
Kansas limited liability company

Mark Murphy President
Mark Murphy

State of Kansas) SS
Sedgwick County)

The foregoing instrument acknowledged before me, this 5th day of January, 2009, by Mark Murphy, President, on behalf of Ledgestone Homes, Inc., a Kansas limited liability company.

Kristina L. Berg Notary Public
Kristina L. Berg

My appointment expires 9-25-2010

We the undersigned, holders of a mortgage on a portion of the above described property, do hereby consent to this plat of "LEDGESTONE ADDITION" Wichita, Sedgwick County, Kansas.

Legacy Bank, N.A.

Brian Hudson Vice President
Brian Hudson

State of Kansas) SS
Sedgwick County)

The foregoing instrument acknowledged before me this 6th day of January, 2009, by Brian Hudson, Vice President of Legacy Bank, N.A., on Behalf of the Bank.



Kimberly R. Baurer Notary Public

My appointment expires 9/11/12

This plat of "LEDGESTONE ADDITION", Wichita, Sedgwick County, Kansas, has been submitted to and approved by the Wichita-Sedgwick County Metropolitan Area Planning Commission, Wichita, Kansas.

Dated this ___ day of ___, 200__.

Wichita-Sedgwick County Metropolitan Area Planning Commission

Darrell Downing Chair
John L. Schlegel Secretary

This plat approved and all dedications shown hereon accepted by the City Council of the City of Wichita, Kansas, this ___ day of ___, 200__.

At the Direction of the City Council

Carl Brewer Mayor
Karen Sublett City Clerk

Reviewed in accordance with K.S.A. 58-2005 on this 8th day of November, 2009.

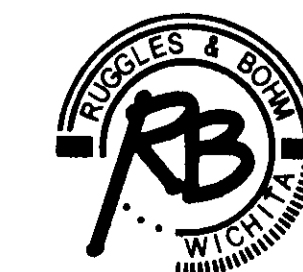
Robella Deputy County Surveyor
Robella, LS #1246
Sedgwick County Kansas

Entered on transfer record this ___ day of ___, 200__.
Kelly B. Arnold County Clerk

State of Kansas) SS
Sedgwick County)

This is to certify that this plat has been filed for record in the office of the Register of Deeds, this ___ day of ___, 200__, at ___ o'clock ___ M., and is duly recorded.

Bill Meek Register of Deeds
Tonya Buckingham Deputy



Ruggles & Bohm, P.A.
Engineering, Surveying, Land Planning
924 North Main
Wichita, Kansas 67203
www.rbkansas.com
(316) 264-8008
(316) 264-4621 fax
E-mail: info@rbkansas.com

DWG FILE: SURVEY BASE
PROJECT NO. 3321P
NOVEMBER 25, 2008