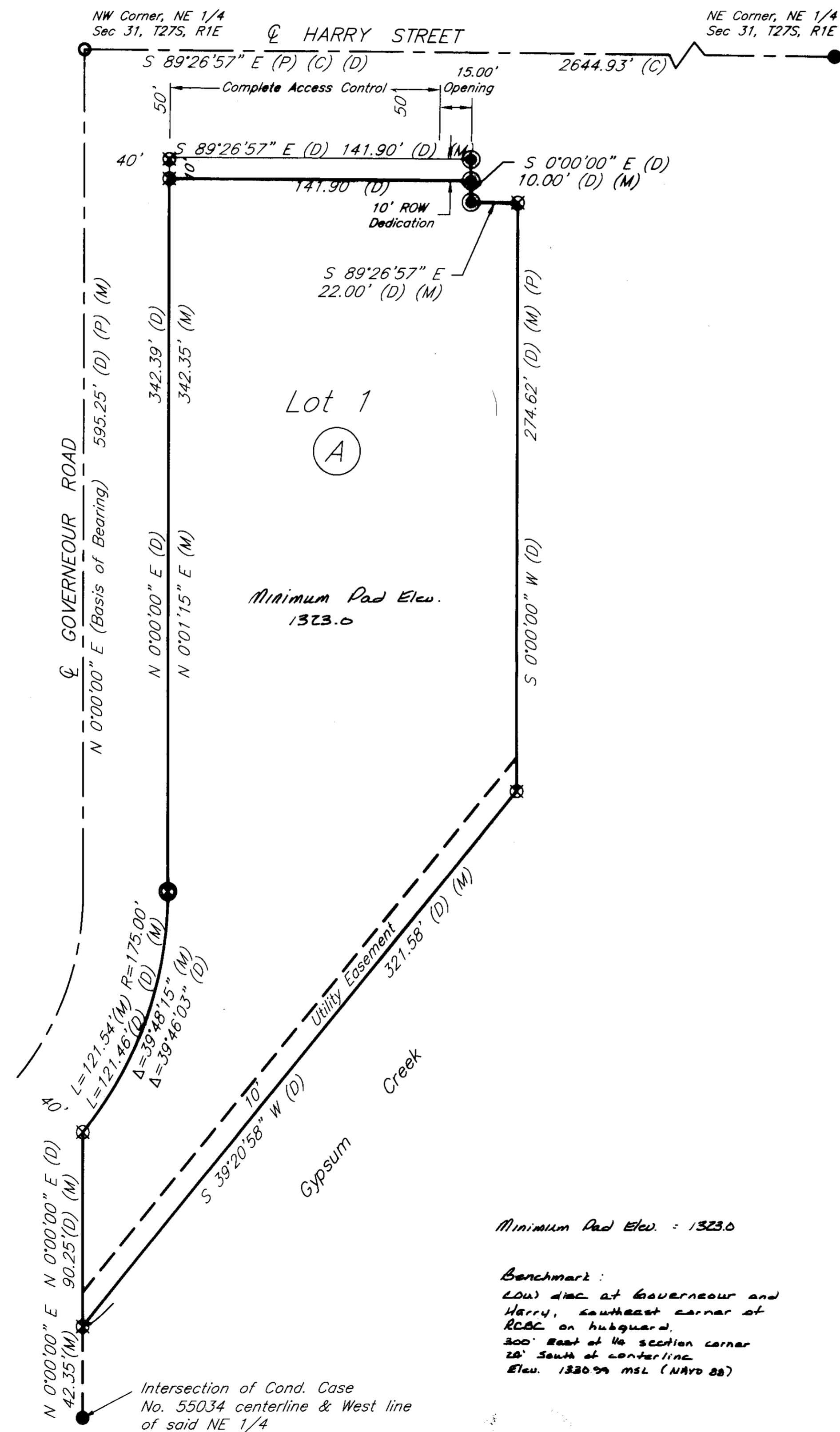


2-5-09
Sub 2008-81

Auto Image Addition WICHITA, SEDGWICK COUNTY, KANSAS

Part of the Northeast 1/4, Section 31, Township 27 South, Range 1 East of the 6th. P.M.



State of Kansas)
County of Sedgwick) ss

I, Randall L. Elkins, a licensed land surveyor of the State of Kansas, do hereby certify that the following described tract of land was surveyed on the 8th day of October, 2008 and the accompanying final plat prepared and that all the monuments shown herein actually exist and their positions are correctly shown to the best of my knowledge and belief:

Commencing at the Northwest corner of the Northeast Quarter of Section 31, Township 27 South, Range 1 East of the 6th Principal Meridian, Sedgwick County, Kansas; thence bearing S 00'00'00" E along the West line of said quarter section for a distance of 50.00 feet; thence bearing S 89'26'57" E parallel to the North line of said quarter section, a distance of 40.00 feet to the Point of Beginning, said point being on the South right-of-way line of Harry Street; thence S 89'26'57" E along said right-of-way, a distance of 141.90 feet; thence S 0'00'00" E parallel with said quarter section line a distance of 20.00 feet; thence S 89'26'57" E, a distance of 22.00 feet; thence S 0'00'00" E, a distance of 274.62 feet to the Northwesterly Line of Gypsum Creek as Condemned in Case No. 35579; thence S 39'20'58" W along said right-of-way a distance of 321.58 feet to the West Line of said quarter section; thence North along said west line of said quarter section, a distance of 90.25 feet, thence on a non-tangent curve to the left with a delta of 39'46'03", a radius of 175.00 feet, an arc length of 121.46 feet to a point being 40.00 feet East of the West line of said quarter section; thence N 0'00'00" E, a distance of 342.39 feet to the Point of Beginning.

All easements and rights-of-way within said lots are hereby vacated by virtue of KSA 12-512(b) amended.



Randall L. Elkins, L.S. #1294 Date

State of Kansas)
County of Sedgwick) ss

Know all men by these presents, that we, the undersigned, have caused the land described in the surveyor's certificate to be platted into a Lot and Block to be known as Auto Image Addition, Wichita, Sedgwick County, Kansas. Any easements are hereby granted as indicated for constructing, maintaining, operating, and repairing public utilities. A drainage plan has been developed for the plat and all drainage easements, rights-of-way, or reserves shall remain at established grades or as modified with the approval of the applicable City or County Engineer, and unobstructed to allow for the conveyance of stormwater. And further that the land contained herein is held and shall be conveyed subject to any applicable restrictions, reservations and covenants now on file or hereafter filed in the Office of the Register of Deeds of Sedgwick County, Kansas. The North 10 feet shall be dedicated for right of way to and for the use of the public.

Access Control is hereby granted as follows:
1. Complete Access Control Except East 15 feet along Harry.

By: Brad Sechler Date 1-30-09
Brad Sechler, Manager

State of Kansas)
County of Sedgwick) ss

This instrument was acknowledged before me on this 30 day of January, 2009, by Brad Sechler, Manager

Pat Newlin
Notary Public

My Commission Expires: June 16, 2011



State of Kansas)
County of Sedgwick) ss

This instrument was acknowledged before me on this ___ day of _____, 2009, by _____

Notary Public
My Commission Expires: _____

State of Kansas)
City of Wichita) ss

This plat of Auto Image Addition, Wichita, Sedgwick County, Kansas, has been submitted to and approved by the Wichita-Sedgwick County Metropolitan Area Planning Commission, Wichita, Kansas. Dated this 6th day of November, 2008. Wichita-Sedgwick County Metropolitan Area Planning Commission.

Darrell Drowning, Chairman

John L. Schlegel, Secretary

State of Kansas)
City of Wichita) ss

This plat approved and all dedications shown hereon accepted by the City Council of the City of Wichita, Kansas, this ___ day of _____, 2009.

At the Direction of the City Council

Carl Brewer, Mayor

Karen Sublett, City Clerk

Entered on transfer record this ___ day of _____, 2009.

Kelly B. Arnold, County Clerk

State of Kansas)
County of Sedgwick) ss

This is to certify that this plat has been filed for record in the Office of the Register of Deeds this ___ day of _____, 2009, at ___ o'clock ___ M; and is duly recorded.

Bill Meek, Register of Deeds

Tonya Buckingham, Deputy

Reviewed in accordance with K.S.A. 58-2005 on this 12th day of January, 2009.



Tricia L. Robello, L.S. #1246
Deputy County Surveyor
Sedgwick County, Kansas

Filename: 08138 TRANS-NET PLAT

516 S. Market, Wichita, KS 67202 316/264-0242