

STATE OF KANSAS } SS
COUNTY OF SEDGWICK }

REGENCY LAKES COMMERCIAL 3RD ADDITION

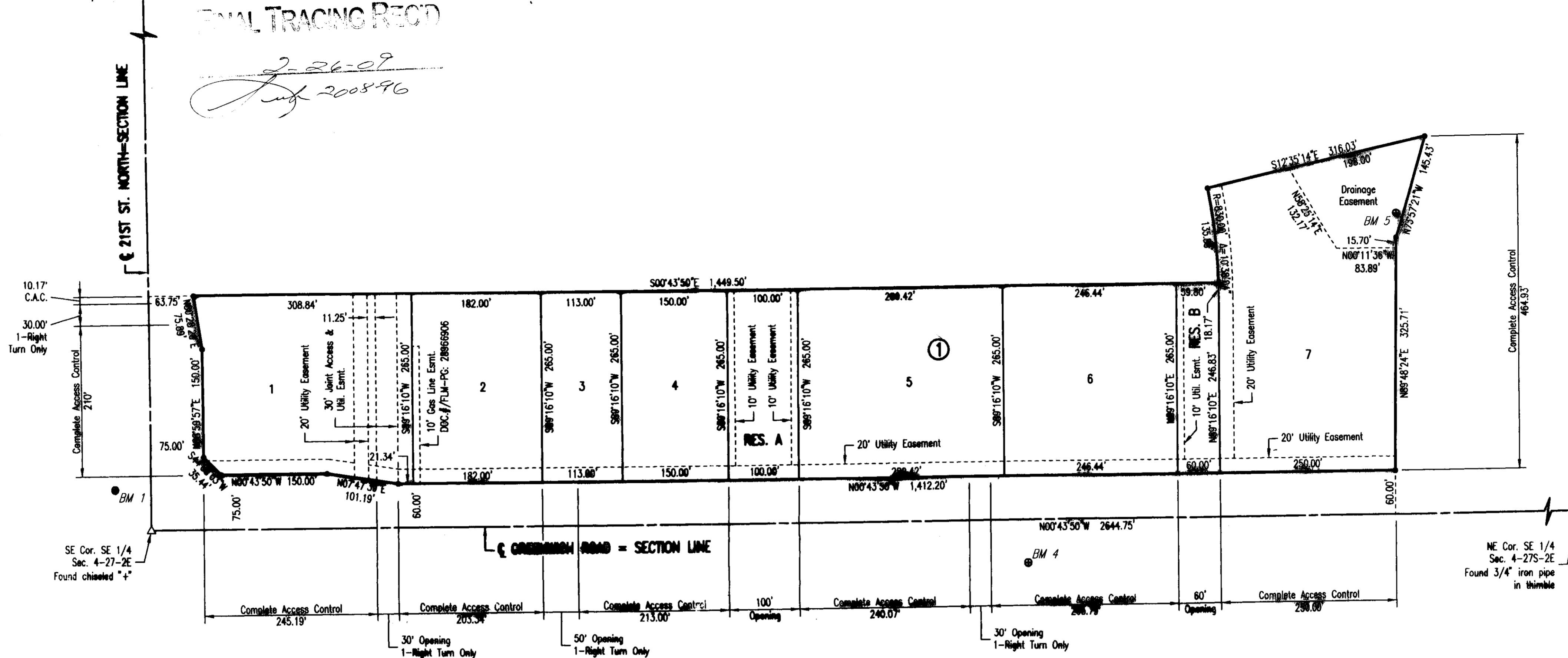
AN ADDITION TO WICHITA, SEDGWICK COUNTY, KANSAS

WE, PROFESSIONAL ENGINEERING CONSULTANTS, P.A., ENGINEERS AND SURVEYORS IN AFORESAID STATE AND COUNTY DO HEREBY CERTIFY THAT ON THIS 26th DAY OF July, 2009, 2009, WE HAVE SURVEYED AND PLATTED REGENCY LAKES COMMERCIAL 3RD ADDITION, AN ADDITION TO WICHITA, SEDGWICK COUNTY, KANSAS, INTO LOTS, A BLOCK, AND RESERVES, THE SAME BEING A REPLAT OF, AND DESCRIBED AS FOLLOWS:

LOTS 1, 2, 3, 4, 5, 6, 7, AND 8, BLOCK 1, AND THE EAST 265.00 FEET OF RESERVE "A" ADJACENT TO LOTS 3 AND 6, BLOCK 1, REGENCY LAKES COMMERCIAL 2ND ADDITION, AN ADDITION TO WICHITA, SEDGWICK COUNTY, KANSAS.

ALL PUBLIC EASEMENTS LYING WITHIN THE ABOVE DESCRIBED TRACT OF LAND ARE HEREBY VACATED AND REPLATTED BY VIRTUE OF KSA 12-512(b) AMENDED.

SW Cor. SE 1/4
Sec. 4-275-2E
Found 1/2" rebar
with MKEC cap



JAMES R. BENNETT, R.L.S. NO. 832
PROFESSIONAL ENGINEERING CONSULTANTS, P.A.

EASEMENTS FOR THE CONSTRUCTION AND MAINTENANCE OF PUBLIC UTILITIES ARE HEREBY GRANTED TO THE CITY OF WICHITA.

THIS ADDITION IS SUBJECT TO THE CONDITIONS OF REGENCY LAKES COMMERCIAL COMMUNITY UNIT PLAN (DP-234).

RESERVES "A" AND "B" ARE HEREBY PLATTED FOR LANDSCAPING, ENTRY MONUMENTS, DRAINAGE, RECREATION USES, UTILITIES CONFINED TO EASEMENTS, SIDEWALKS, SIGNS, PRIVATE DRIVES, AND LIGHTS. RESERVES "A" AND "B" SHALL BE OWNED AND MAINTAINED BY THE MASTER OWNERS ASSOCIATION DEVELOPED FOR REGENCY LAKES SHOPPING CENTER, WICHITA, KANSAS.

THE PRIVATE DRIVES IN RESERVES "A" AND "B" ARE HEREBY PLATTED FOR ACCESS TO LOTS 1 THROUGH 7, BLOCK 1, REGENCY LAKES COMMERCIAL 3RD, AND LOTS 9-12, BLOCK 1, REGENCY LAKES COMMERCIAL 2ND.

ALL ADJUTER'S RIGHT OF ACCESS TO AND FROM 21ST STREET NORTH OVER AND ACROSS THE SOUTH PROPERTY LINE AND TO AND FROM GREENWICH ROAD OVER AND ACROSS THE EAST PROPERTY LINE IS HEREBY GRANTED TO THE CITY OF WICHITA, PROVIDED HOWEVER THAT THERE SHALL BE ACCESS TO 21ST STREET NORTH AT ONE LOCATION AS SHOWN, AND ACCESS TO GREENWICH ROAD AT FIVE LOCATIONS AS SHOWN.

MINIMUM PAD ELEVATIONS (LOWEST GREENING) SHALL BE AS FOLLOWS:

BLOCK 1	CITY DATUM	N.G.V.D.
LOTS 1-4	180.6	1368.0
LOTS 5-7	181.1	1368.5

A DRAINAGE PLAN HAS BEEN APPROVED FOR THIS PLAT. ALL DRAINAGE EASEMENTS, RIGHTS-OF-WAY, AND RESERVES SHALL REMAIN AT ESTABLISHED GRABBS AND UNOBTSTRUCTED TO ALLOW FOR THE CONVEYANCE OF STORM WATER, UNLESS MODIFIED WITH THE APPROVAL OF THE CITY ENGINEER.

KNOW ALL MEN BY THESE PRESENTS THAT WE, THE UNDERSIGNED PROPERTY OWNERS OF THE LAND AS ABOVE SET FORTH IN THE SURVEYOR'S CERTIFICATE, HAVE CAUSED THE LAND TO BE SURVEYED AND PLATTED INTO LOTS, A BLOCK, AND RESERVES, THE SAME TO BE KNOWN AS REGENCY LAKES COMMERCIAL 3RD ADDITION, AN ADDITION TO WICHITA, SEDGWICK COUNTY, KANSAS.

OWNER:
RBH HOTEL WICHITA LLC, A DELAWARE LIMITED LIABILITY COMPANY
BY: BULL'S-EYE LODGING, LLC, A KANSAS LIMITED LIABILITY COMPANY, ITS MANAGER
BY: TMH HOTELS, INC., A KANSAS CORPORATION, ITS SOLE MEMBER

BY: William J. Hamrick
WILLIAM J. HAMRICK, PRESIDENT

STATE OF KANSAS } SS
COUNTY OF SEDGWICK }

BE IT REMEMBERED ON THIS 20th DAY OF January 2009, BEFORE ME, A NOTARY PUBLIC IN AFORESAID STATE AND COUNTY, CAME WILLIAM J. HAMRICK, PRESIDENT OF TMH HOTELS, INC., A KANSAS CORPORATION WHICH IS THE SOLE MEMBER OF BULL'S-EYE LODGING, LLC, A KANSAS LIMITED LIABILITY COMPANY WHICH IS THE MANAGER OF RBH HOTEL WICHITA LLC, ON BEHALF OF SUCH LIMITED LIABILITY COMPANY, AND TO ME PERSONALLY KNOWN TO BE THE SAME PERSON WHO EXECUTED THE FOREGOING INSTRUMENT OF WRITING AND DULY ACKNOWLEDGED THE EXECUTION OF SAME FOR AND ON BEHALF OF AND AS THE ACT AND DEED OF SAID COMPANY IN TESTIMONY WHEREOF I HAVE HERELIANTO SET MY HAND AND AFFIRMED MY NOTARIAL SEAL THE DAY AND YEAR ABOVE WRITTEN.

BY: Michael J. Youngers
MICHAEL J. YOUNGERS, NOTARY PUBLIC
MY APPOINTMENT EXPIRES: Oct 15th, 2012

OWNER:
REGENCY LAND COMPANY, LLC
BY: LAHAM DEVELOPMENT COMPANY, LLC, ITS MANAGER
BY: George E. Laham
GEORGE E. LAHAM, II, MANAGER

STATE OF KANSAS } SS
COUNTY OF SEDGWICK }

BE IT REMEMBERED ON THIS 5th DAY OF July 2009, BEFORE ME, A NOTARY PUBLIC IN AFORESAID STATE AND COUNTY, CAME GEORGE E. LAHAM, II, MANAGER OF LAHAM DEVELOPMENT COMPANY, LLC, MANAGER OF REGENCY LAND DEVELOPMENT COMPANY, LLC, AND TO ME PERSONALLY KNOWN TO BE THE SAME PERSON WHO EXECUTED THE FOREGOING INSTRUMENT OF WRITING AND DULY ACKNOWLEDGED THE EXECUTION OF SAME FOR AND ON BEHALF OF AND AS THE ACT AND DEED OF SAID COMPANY IN TESTIMONY WHEREOF I HAVE HERELIANTO SET MY HAND AND AFFIRMED MY NOTARIAL SEAL THE DAY AND YEAR ABOVE WRITTEN.

BY: Cathy Ferguson
CATHY FERGUSON, NOTARY PUBLIC
MY APPOINTMENT EXPIRES: 9-22-12

OWNER:
KANZA BANK, A KANSAS REGISTERED BANK

BY: John E. Boyer, IV
JOHN E. BOYER, IV, CEO/CHAIRMAN

STATE OF KANSAS } SS
COUNTY OF KINGMAN }

BE IT REMEMBERED ON THIS 15th DAY OF Dec., 2009, BEFORE ME, A NOTARY PUBLIC IN AFORESAID STATE AND COUNTY, CAME JOHN E. BOYER, IV, CEO/CHAIRMAN OF KANZA BANK, A KANSAS REGISTERED BANK, AND TO ME PERSONALLY KNOWN TO BE THE SAME PERSON WHO EXECUTED THE FOREGOING INSTRUMENT OF WRITING AND DULY ACKNOWLEDGED THE EXECUTION OF SAME FOR AND ON BEHALF OF AND AS THE ACT AND DEED OF SAID COMPANY IN TESTIMONY WHEREOF I HAVE HERELIANTO SET MY HAND AND AFFIRMED MY NOTARIAL SEAL THE DAY AND YEAR ABOVE WRITTEN.

BY: Carie Dawn Youngers
CARIE DAWN YOUNGERS, NOTARY PUBLIC
MY APPOINTMENT EXPIRES: 12-2-11

CARIE DAWN YOUNGERS
Notary Public - State of Kansas
My Appl. Expires 12-2-11

STATE OF KANSAS } SS
COUNTY OF SEDGWICK }

WE STANDARD INSURANCE COMPANY, AN OREGON CORPORATION, HOLDER OF A MORTGAGE ON THE ABOVE DESCRIBED PROPERTY, DO HEREBY CONSENT TO THE PLATTING OF REGENCY LAKES COMMERCIAL 3RD ADDITION, AN ADDITION TO WICHITA, SEDGWICK COUNTY, KANSAS.

BY: Mark Fisher
Mark Fisher, Assistant Vice President
Attest: [Signature]
Assistant Secretary
STATE OF Oregon } SS
COUNTY OF Washington }

BE IT REMEMBERED ON THIS 17th DAY OF February 2009, BEFORE ME, A NOTARY PUBLIC IN AFORESAID STATE AND COUNTY, CAME Mark Fisher, Assistant Vice President and Gary D. Schmitt, Senior Vice President, AND TO ME PERSONALLY KNOWN TO BE THE SAME PERSON WHO EXECUTED THE FOREGOING INSTRUMENT OF WRITING AND DULY ACKNOWLEDGED THE EXECUTION OF SAME FOR AND ON BEHALF OF AND AS THE ACT AND DEED OF SAID INSURANCE COMPANY. IN TESTIMONY WHEREOF I HAVE HERELIANTO SET MY HAND AND AFFIRMED MY NOTARIAL SEAL THE DAY AND YEAR ABOVE WRITTEN.

BY: Janette M. Hess
JANETTE M. HESS, NOTARY PUBLIC
MY APPOINTMENT EXPIRES: June 19, 2009

WE, INTRUST BANK, N.A. IN WICHITA KANSAS, HOLDER OF A MORTGAGE ON THE ABOVE DESCRIBED PROPERTY, DO HEREBY CONSENT TO THE PLATTING OF REGENCY LAKES COMMERCIAL 3RD ADDITION, AN ADDITION TO WICHITA, SEDGWICK COUNTY, KANSAS.

BY: Gary D. Schmitt
GARY D. SCHMITT, SENIOR VICE PRESIDENT

STATE OF KANSAS } SS
COUNTY OF SEDGWICK }

BE IT REMEMBERED ON THIS 9th DAY OF January 2009, BEFORE ME, A NOTARY PUBLIC IN AFORESAID STATE AND COUNTY, CAME GARY D. SCHMITT, SENIOR VICE PRESIDENT, INTRUST BANK, N.A., AND TO ME PERSONALLY KNOWN TO BE THE SAME PERSON WHO EXECUTED THE FOREGOING INSTRUMENT OF WRITING AND DULY ACKNOWLEDGED THE EXECUTION OF SAME FOR AND ON BEHALF OF AND AS THE ACT AND DEED OF SAID BANK. IN TESTIMONY WHEREOF I HAVE HERELIANTO SET MY HAND AND AFFIRMED MY NOTARIAL SEAL THE DAY AND YEAR ABOVE WRITTEN.

BY: Susan K. Cook
SUSAN K. COOK, NOTARY PUBLIC
MY APPOINTMENT EXPIRES: 11/3/12

THIS PLAT OF REGENCY LAKES COMMERCIAL 3RD ADDITION HAS BEEN SUBMITTED TO AND APPROVED BY THE WICHITA-SEDGWICK COUNTY METROPOLITAN AREA PLANNING COMMISSION, WICHITA, KANSAS.

DATED THIS _____ DAY OF _____, 2009.

WICHITA-SEDGWICK COUNTY METROPOLITAN AREA PLANNING COMMISSION

_____, CHAIR
DARRELL DOWNING
_____, SECRETARY
JOHN L. SCHLEGEL

REVIEWED IN ACCORDANCE WITH K.S.A. 58-2005 ON THIS _____ DAY OF _____, 2009.

TRICIA L. ROBELLO, LS #1246
DEPUTY COUNTY SURVEYOR
SEDGWICK COUNTY KANSAS

SCALE: 1" = 100'

• = 1/2" REBAR W/PEC CAP UNLESS OTHERWISE NOTED

BENCHMARKS

- BM 1
Chiseled "d" Conc. base Traffic Signal at SW Corner 21st. N. and Greenwich
City Datum: 176.16
N.G.V.D.: 1363.56
- BM 4
W. end Bolt in Power Pole 1 1/2' above ground at Private Dr. 2400 N. Greenwich on E. side of Rd.
City Datum: 183.80
N.G.V.D.: 1371.20
- BM 5
Chiseled "d" on W. wing wall at W. end of S. headwall RCBC under Bike Path just S. of K-96 E.B. Ramp to Greenwich 400'± from Greenwich.
City Datum: 179.87
N.G.V.D.: 1367.27

THIS PLAT IS APPROVED AND ALL DEDICATIONS SHOWN HEREON, IF ANY ARE ACCEPTED BY THE CITY COUNCIL OF THE CITY OF WICHITA, KANSAS, THIS _____ DAY OF _____, 2009.

- _____, MAYOR
CARL BREWER
- _____, CITY CLERK
KAREN SCHOFIELD
- ENTERED ON TRANSFER RECORD THIS _____ DAY OF _____, 2009.
- _____, COUNTY CLERK
KELLY ARNOLD

THIS IS TO CERTIFY THAT THIS INSTRUMENT WAS FILED FOR RECORD IN THE REGISTER OF DEEDS OFFICE AT _____, MO., ON THE _____ DAY OF _____, 2009.

- _____, REGISTER OF DEEDS
BILL MEEK
- _____, DEPUTY
TONYA BUCKINGHAM

FILED 12-21-2009 3:26:52 PM BY JAE
COUNTY OF SEDGWICK KANSAS