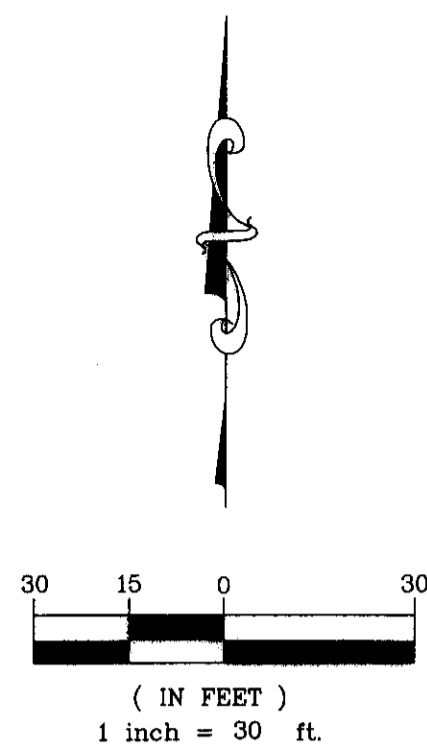


# MAPLERIDGE ADDITION

## CITY OF WICHITA, SEDGWICK COUNTY, KANSAS

Part of the NW 1/4, Section 27, Township 27 South, Range 1 West of the 6th. P.M.



- ⊕ 3/8" Rebar KEMPA CLS #157
- X "X" Cut in SW
- C Calculated
- P Platted
- D Deeded
- M Measured

State of Kansas )  
County of Sedgwick ) ss

I, Bradley C. Ward, a licensed land surveyor of the State of Kansas, do hereby certify that the following described tract of land was surveyed on the 23rd day of December, 2006 and the accompanying final plat prepared and that all the monuments shown herein actually exist and their positions are correctly shown to the best of my knowledge and belief:

Lots 1 and 2, Block 1, King's Maple Street Addition, Wichita, Sedgwick County, Kansas.  
and  
Lot 1, Block 1, King's Maple Street Second Addition, Wichita, Sedgwick County, Kansas.  
and  
Lot 1, Block 1, except the south 57.50 feet thereof, King's Maple Street Third Addition, Wichita, Sedgwick County, Kansas.

All being situated in the NW 1/4 of Sec. 27, Twp. 27-S, R-1-W of the 6th P.M., Sedgwick County, Kansas.  
All easements and rights-of-way within Mapleridge Addition are hereby vacated by virtue of KSA 12-512(b) amended.

State of Kansas )  
City of Wichita ) ss

This plat of Mapleridge Addition, Wichita, Sedgwick County, Kansas, has been submitted to and approved by the Wichita-Sedgwick County Metropolitan Area Planning Commission, Wichita, Kansas. Dated this ~~15th~~ 13th day of ~~February~~ January, 2007. Wichita-Sedgwick County Metropolitan Area Planning Commission.

*Samuel Downing*  
Darrell A. Downing, Chairman  
*John L. Schlegel*  
John L. Schlegel, Secretary



State of Kansas )  
City of Wichita ) ss

This plat approved and all dedications shown hereon accepted by the City Council of the City of Wichita, Kansas, this 13th day of January, 2007.

At the Direction of the City Council

*Carl Brewer*  
Carl Brewer, Mayor  
*Karen Sublett, CLIC*  
Karen Sublett, City Clerk



*Bradley C. Ward*  
Bradley C. Ward, L.S. #920  
12-10-08  
date

State of Kansas )  
County of Sedgwick ) ss

Know all men by these presents, that we, the undersigned, have caused the land described in the surveyor's certificate to be platted into Lots, Blocks and a Street to be known as Mapleridge Addition, Wichita, Sedgwick County, Kansas. Any easements are hereby granted as indicated for constructing, maintaining, operating, and repairing public utilities. A Drainage Plan for this addition has been established, and all drainage easements and rights-of-way shall remain at established grades or as modified with the approval of the applicable City or County Engineer, and unobstructed to allow for the conveyance of storm water. The land contained herein is held and shall be conveyed subject to any restrictions, reservations, and covenants on file or hereafter filed in the office of the Register of Deeds of Sedgwick County, Kansas.

Access Control is hereby granted as follows:  
1. There shall be a maximum of 2 openings on Ridge Road and 1 opening on Maple. Ridge Road openings shall be right turns only.

By: *George E. Laham II*  
George E. Laham, II, Manager, Venture Seven Development, L.L.C.

Entered on transfer record this \_\_\_\_ day of \_\_\_\_\_, 2009.

*Kelly B. Arnold*  
Kelly B. Arnold, County Clerk

State of Kansas )  
County of Sedgwick ) ss

This is to certify that this plat has been filed for record in the Office of the Register of Deeds this \_\_\_\_ day of \_\_\_\_\_, 2009, at \_\_\_\_ o'clock \_\_\_\_ M; and is duly recorded.

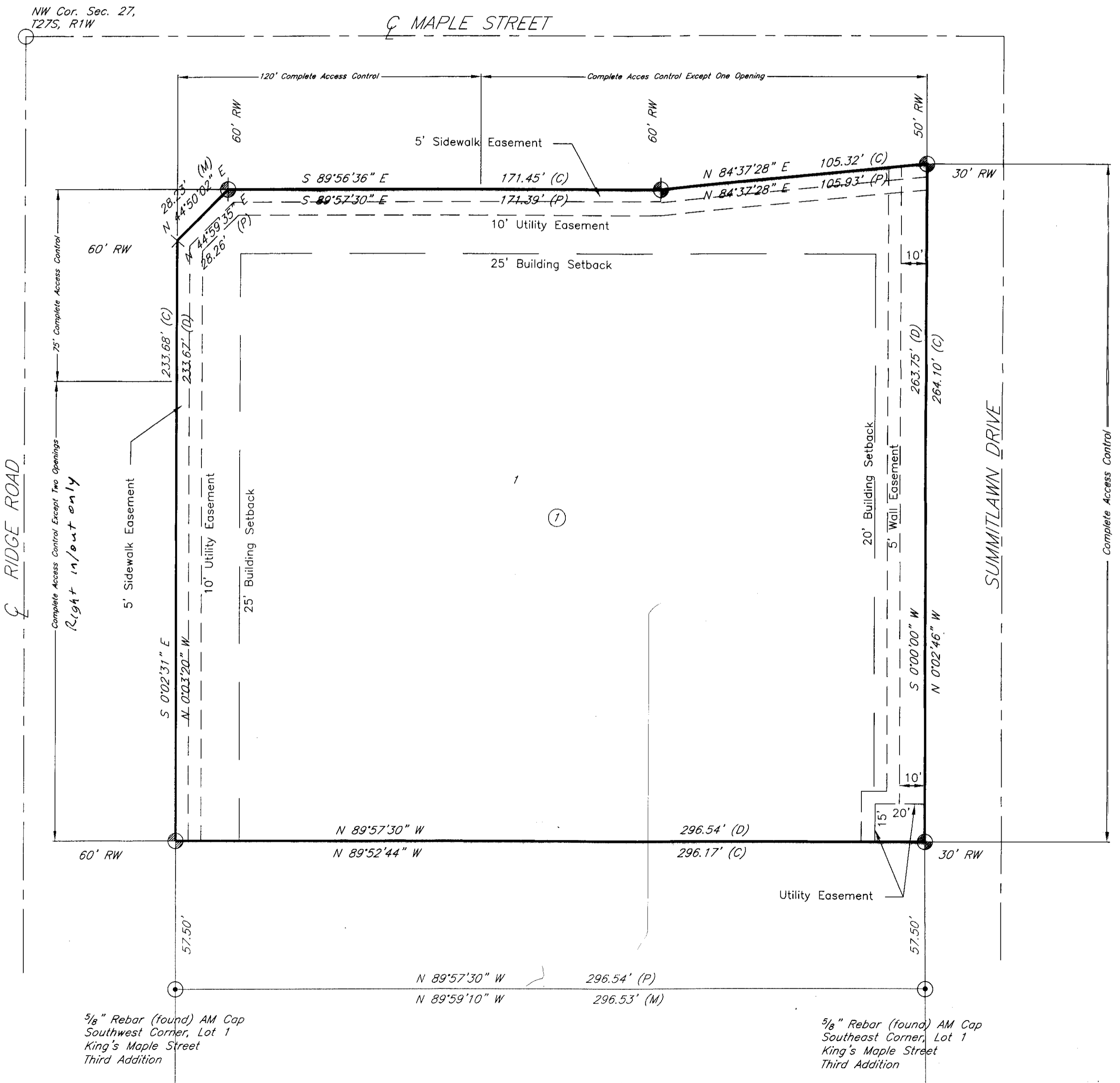
*Bill Meek*  
Bill Meek, Register of Deeds

*Tonya Buckingham*  
Tonya Buckingham, Deputy

Reviewed in accordance with K.S.A. 58-2005 on this 15th day of January, 2008.  
*Tricia L. Sublett*  
Tricia L. Sublett, L.S. #1246  
Deputy Surveyor  
Sedgwick County, Kansas

State of Kansas )  
County of Sedgwick ) ss

This instrument was acknowledged before me on this 16th day of December, 2008, by George E. Laham, II, Manager, Venture Seven Development, L.L.C.  
*Tracy Evers*  
Tracy Evers  
Notary Public  
My Commission Expires 9-22-12



3/8" Rebar (found) AM Cap  
Southwest Corner, Lot 1  
King's Maple Street  
Third Addition

3/8" Rebar (found) AM Cap  
Southeast Corner, Lot 1  
King's Maple Street  
Third Addition

Filename: 07013\dwg\mapleridge.dwg Prepared: 2-2-07

516 S. Market, Wichita, KS 67202 316/264-0242