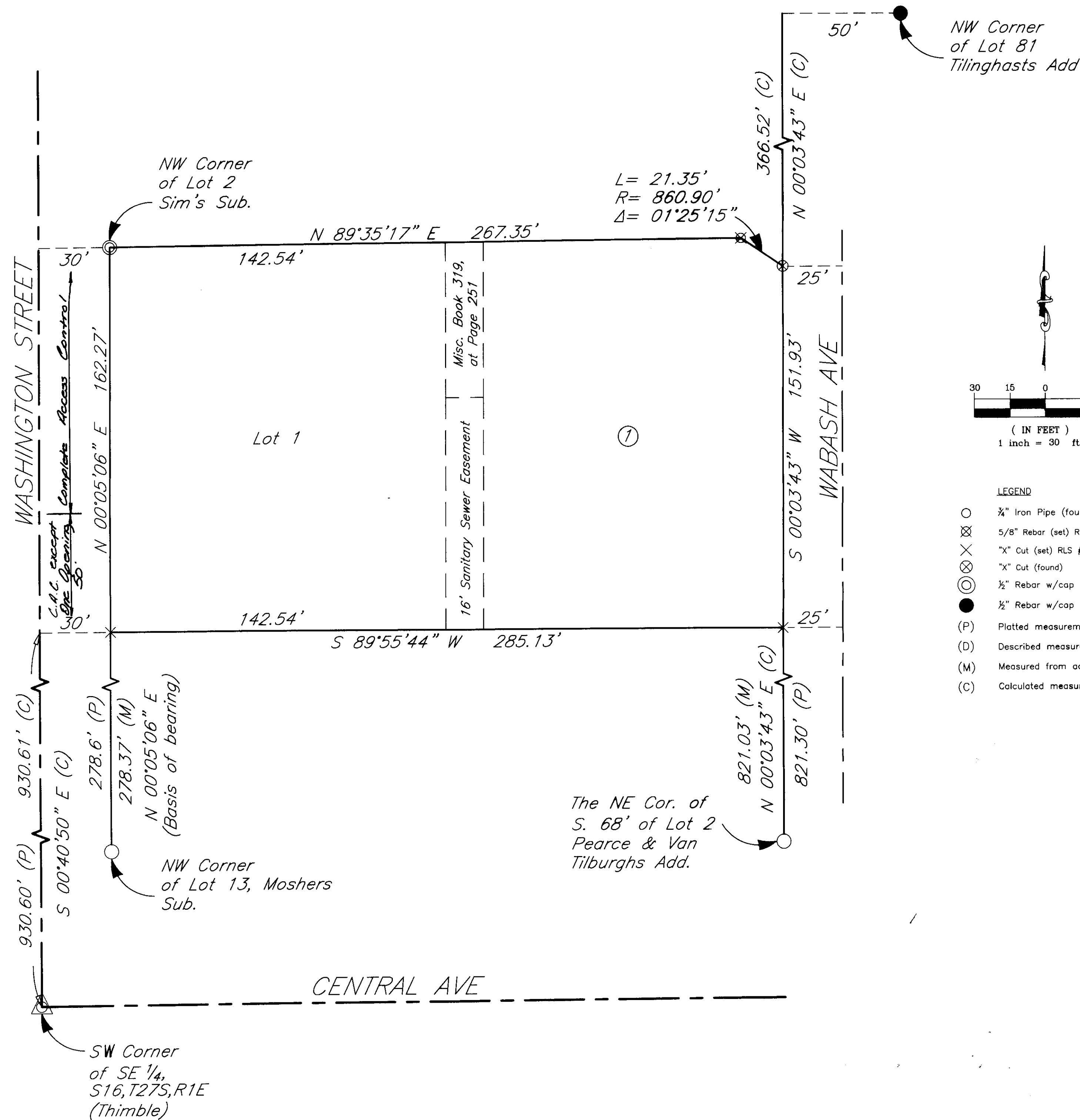


3-17-09
Feb 2008 90

Hiller Addition WICHITA, SEDGWICK COUNTY, KANSAS

Part of the Southeast 1/4, Section 16, Township 27 South, Range 1 East of the 6th. P.M.



State of Kansas)
County of Sedgwick) ss

State of Kansas)
City of Wichita) ss

I, Randall L. Elkins, a licensed land surveyor in the aforesaid County and State, do hereby certify that the following described tract of land was surveyed on the 17th day of October, 2008 and the accompanying final plat prepared and that all the monuments shown herein actually exist and their positions are correctly shown to the best of my knowledge and belief.

This plat of Hiller Addition, Wichita, Sedgwick County, Kansas, has been submitted to and approved by the Wichita-Sedgwick County Metropolitan Area Planning Commission, Wichita, Kansas. Dated this _____ day of _____, 2009. Wichita-Sedgwick County Metropolitan Area Planning Commission.

Described as the Hiller Addition, Wichita, Sedgwick County, Kansas,

Darrell Downing, Chairman

Beginning at the Northwest corner of Lot 1, Mosher's Subdivision of Lots 9, 11 and 13, in Pierce and Vantilburg's Addition, to the City of Wichita, Kansas; thence North 162.27 feet to the Northwest corner of Lot 2, Sim's Subdivision of Lot 17, on Wabash Avenue in Pearce & Vantilburg's Addition, to Wichita, Kansas; thence East 267.35 feet along the North line of said Lot 2 and the North line of Lot 1 in said subdivision, to the Northeast corner of said Lot 1, Sim's Sub; thence on a non tangent curve to the left with a delta of 01°25'15" and a radius of 860.90 feet, for a length of 21.35 feet; said point being 25 feet West of center line of Wabash and 151.93 feet North of the Northeast corner of Lot 2, Mosher's Subdivision; thence South 151.93 feet to the Northeast corner of Lot 2, Mosher's Subdivision; thence West 285.13 feet to the Point of Beginning. Said tract includes the abandoned St. Louis & San Francisco railroad right-of-way; The North 37 feet of Lot 15 of Pearce & Van Tilburgh's Addition, to City of Wichita, Kansas; and Lots 1 and 2 of Sim's Subdivision of Lot 17, Pearce & Vantilburg's Addition, to Wichita, Kansas.

John L. Schlegel, Secretary

State of Kansas)
City of Wichita) ss

This plat approved and all dedications shown hereon accepted by the City Council of the City of Wichita, Kansas, this _____ day of _____, 2009.

At the Direction of the City Council

Carl Brewer, Mayor

Karen Sublett, City Clerk

All being situated in the SE 1/4 of Section 16, Township 27-S, Range 1, East to the 6th P.M., Sedgwick County, Kansas.

Said tract contains 1.06 acres ±.

All easements and rights-of-way within said lots are hereby vacated by virtue of KSA 12-512(b) amended.

Entered on transfer record this _____ day of _____, 2009.

Kelly B. Arnold, County Clerk

State of Kansas)
County of Sedgwick) ss

This is to certify that this plat has been filed for record in the Office of the Register of Deeds this _____ day of _____, 2009, at _____ o'clock _____ M; and is duly recorded.

Bill Meek, Register of Deeds

Tonya Buckingham, Deputy

Reviewed in accordance with K.S.A. 58-2005 on this 26th day of February, 2009.

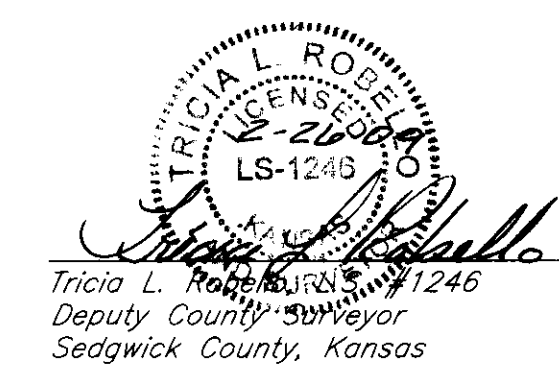


Randall L. Elkins, L.S. #1294 Date _____

State of Kansas)
County of Sedgwick) ss

Know all men by these presents, that we, the undersigned, have caused the land described in the surveyor's certificate to be platted into a Lot and Block to be known as Hiller Addition, Wichita, Sedgwick County, Kansas. Any easements are hereby granted as indicated for constructing, maintaining, operating, and repairing public utilities. A drainage plan has been developed for the plat and all drainage easements, rights-of-way, or reserves shall remain at established grades or as modified with the approval of the applicable City or County Engineer, and unobstructed to allow for the conveyance of stormwater. And further that the land contained herein is held and shall be conveyed subject to any applicable restrictions, reservations and covenants now on file or hereafter filed in the Office of the Register of Deeds of Sedgwick County, Kansas. Access control granted as follows: Complete Access Control except one 30' opening on Washington.

By: Horst K. Hiller March 4 2009
Horst K Hiller Date



Tricia L. Robinson, L.S. #1246
Deputy County Surveyor
Sedgwick County, Kansas

State of Kansas)
County of Sedgwick) ss

This instrument was acknowledged before me on this 4th day of March, 2009, by Horst K Hiller

Alan S. Davis
Notary Public

My Commission Expires: 11/17/2012

ALAN S. DAVIS
NOTARY PUBLIC
STATE OF KANSAS
My Appt. Exp. 11/17/2012

Filename: 08110 Hiller Addition Plat

