

NORTH GREENWICH ADDITION WICHITA, SEDGWICK COUNTY, KANSAS

FILE COPY
REVISED

4-15-09
Jul 2009-03

This plat of "NORTH GREENWICH ADDITION",
Wichita, Sedgwick County, Kansas has been submitted to and approved by
the Wichita-Sedgwick County Metropolitan Area Planning Commission,
Wichita, Kansas.

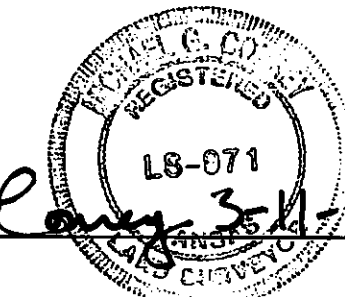
Dated this 5th day of February, 2009,
Wichita-Sedgwick County Metropolitan Area Planning Commission



Darrell Downing
Darrell Downing, Chair

John L. Schlegel
John L. Schlegel, Secretary

Michael G. Conrey
Michael G. Conrey, Surveyor



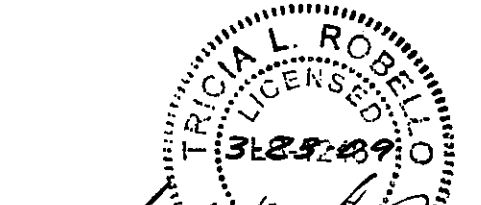
This plat approved and all dedications
shown hereon accepted by the City Council of the City of Wichita,
Kansas, this 14th day of April, 2009.



Carl Brewer
Carl Brewer, Mayor

Karen Sublett
Karen Sublett, City Clerk

Reviewed in accordance with K.S.A. 58-2005
on this 23rd day of March, 2009.



Tricia L. Robella
Tricia L. Robella, L.S. #1246
Deputy County Surveyor
Sedgwick County, Kansas

State of Kansas) SS We, Baughman Company, P.A., Surveyors in
Sedgwick County) do hereby certify that we have surveyed and
platted "NORTH GREENWICH ADDITION", Wichita, Sedgwick County, Kansas
and that the accompanying plat is a true and correct exhibit of the
property surveyed, described as the south 1000.00 feet of the west 1366.80
feet of the N1/2 of the SW1/4 of Sec. 34, Twp. 26-S, R-2-E of the 6th P.M.,
Sedgwick County, Kansas, subject to road rights-of-way of record.
Existing public easements and dedications
being vacated by virtue of K.S.A. 12-512(b).

Baughman Company, P.A.

Know all men by these presents that we,
the undersigned, have caused the land in the surveyors certificate to be
platted into Lots, a Block, and Streets, to be known as "NORTH
GREENWICH ADDITION", Wichita, Sedgwick County, Kansas. The utility
easement is hereby granted as indicated for the construction and
maintenance of all public utilities. The drainage easements are hereby
granted as indicated for drainage purposes. The drainage easements are hereby
granted as indicated for drainage purposes and utility
easements are hereby granted as indicated for drainage purposes and for
the construction and maintenance of all public utilities. The street is
hereby dedicated to and for the use of the public. Access controls shall
be as depicted on the face of the plat and are hereby granted to the
City of Wichita, Kansas. The permitted opening locations shall be as
determined by the City Engineer of the City of Wichita, Kansas. The
Minimum Building Pad Elevations for the lowest opening to the structures
shall be as indicated on the face of the plat. FEMA floodplain and
regulatory boundaries are subject to periodic change, and such
change may effect the intended land use within the subdivision.

Greenwich Investments, LLC
a Kansas limited liability company
Ritchie Associates, Inc., Manager

Rob Ramsey
Rob Ramsey, Vice-President

State of Kansas) SS The foregoing instrument acknowledged before
Sedgwick County) me, this 13th day of March, 2009, by Rob Ramsey, Vice-
President of Ritchie Associates, Inc., as Manager of Greenwich Investments,
LLC, a Kansas limited liability company, on behalf of the limited liability
company.

Angie M. Sizemore
ANGIE M. SIZEMORE, Notary Public
My App't. Exp. 7/25/11

Entered on transfer record this _____ day
of _____, 2009.

Kelly B. Arnold, County Clerk

We the undersigned holders of a mortgage on the
above described property, do hereby consent to this plat of "NORTH
GREENWICH ADDITION", Wichita, Sedgwick County, Kansas.

INTRUST Bank, N.A.

Joseph F. Eaton
JOSEPH F. EATON, S.V.P.

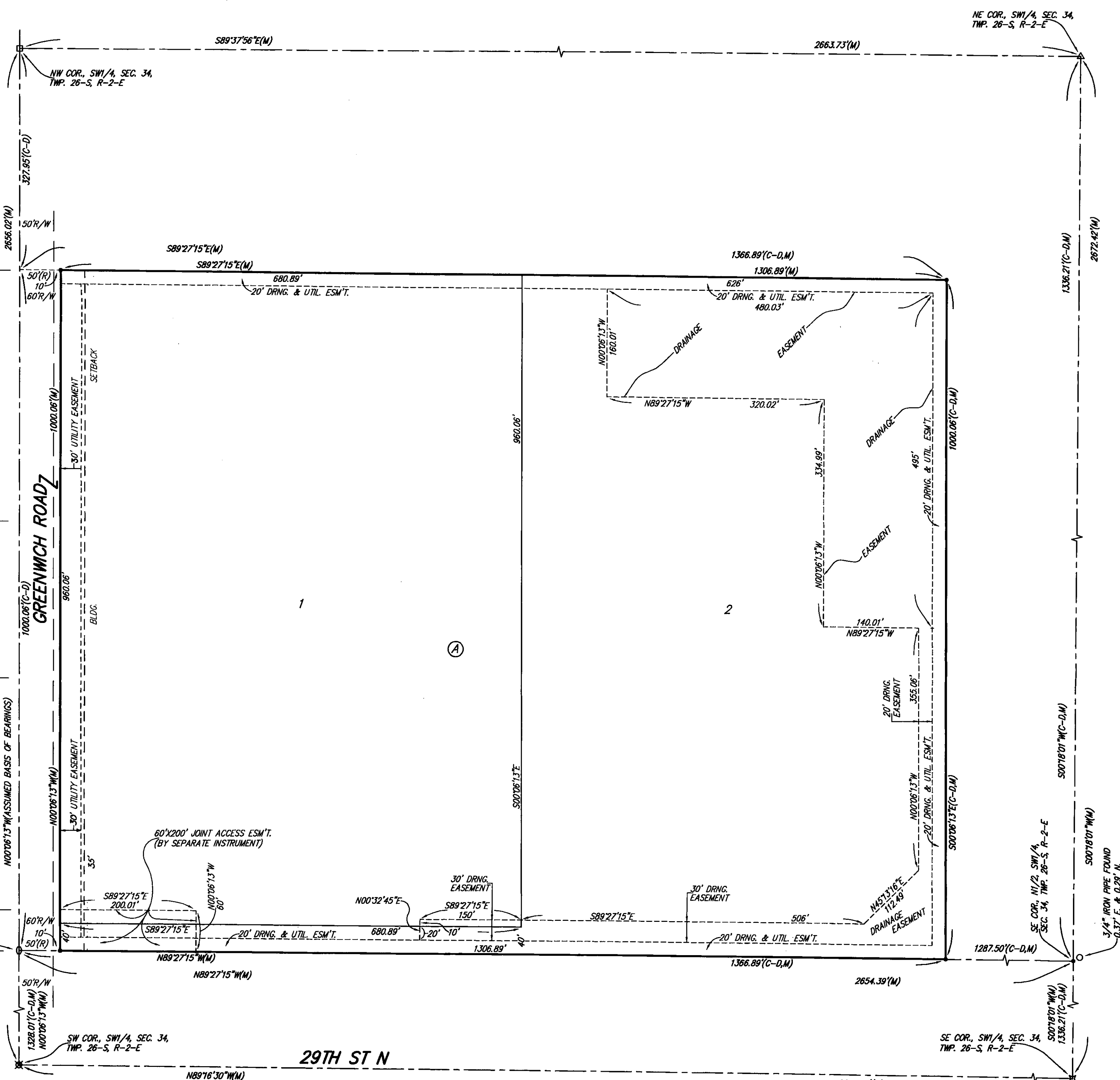
State of Kansas) SS This is to certify that this plat has been
Sedgwick County) filed for record in the office of the Register of Deeds, this _____ day
of _____, 2009 at _____ o'clock _____ M.; and is duly recorded.

Bill Meek, Register of Deeds

Tonya Buckingham, Deputy

State of Kansas) SS The foregoing instrument acknowledged be-
Sedgwick County) fore me, this 16th day of March, 2009, by Joseph F. Eaton
S.V.P. of INTRUST Bank, N.A., on behalf of the bank.

Michele C. Baker
MICHELE C. BAKER, Notary Public
My App't. Exp. 4-17-12



NOTE:
A drainage plan has been developed for this subdivision and is on file with
the City of Wichita, Kansas. Drainage intent shall remain as depicted or as
modified with the approval of the City Engineer of the City of Wichita,
Kansas. No obstructions which impede the flow of this drainage plan shall
be allowed.

NOTE:
ADDITIONAL BUILDING SETBACK REQUIREMENTS
AND RESTRICTIONS PER NORTH GREENWICH
DEVELOPMENT COMMUNITY UNIT PLAN DP-316.

- = #4 REBAR W/ "BAUGHMAN" CAP (SET)
- ⊕ = #5 REBAR OVER STONE (FOUND)
- ⊗ = 3/4" IRON IN THIMBLE (FOUND)
- = 3/4" IRON (FOUND)
- = #6 REBAR (FOUND)
- = RAILROAD SPIKE (FOUND)
- △ = STONE (FOUND)

MINIMUM BUILDING PAD ELEVATIONS FOR LOWEST OPENING TO THE STRUCTURES		
LOT	BLOCK	ELEVATION NAVD88
1, 2	A	1375.5

BENCHMARK:
RR SPIKE IN ASPHALT, SW COR., N1/2,
SW1/4, SEC. 34, TWP. 26-S, R-2-E.
ELEV. = 1400.59 NAVD88
RR SPIKE IN E. FACE OF POWER POLE,
174'± N. OF S. LINE, N1/2, SW1/4 &
49'± E. OF W. LINE, SW1/4,
SEC. 34, TWP. 26-S, R-2-E.
ELEV. = 1398.64 NAVD88
RR SPIKE IN S. FACE OF POWER POLE,
294'± S. OF N. LINE, SW1/4, &
48'± E. OF W. LINE, SW1/4,
SEC. 34, TWP. 26-S, R-2-E.
ELEV. = 1386.14 NAVD88

(M) = MEASURED
(R) = RECORD MEASUREMENT
(C-D) = CALCULATED PER
DESCRIBED INFO.

