



Wichita-Sedgwick County Metropolitan Area Planning Department

May 20, 2008

Public Works Building Services c/o Norman Jakovac
City of Wichita
455 N Main
Wichita, KS 67202

WDM Architects c/o Stan Landwein
105 N Washington
Wichita, KS 67202

Re: **BZA2008-21**: City zoning administrative adjustment to reduce the parking requirement by 7% from 259 to 240 spaces, generally located west of Hillside and south of K-96 (3239 & 3303 N Hillside)

Legal Description: Lot 1, Block 1, Animal Services Campus Addition to Wichita, Sedgwick County, Kansas.

Dear Applicants,

We have reviewed your Zoning Adjustment request to reduce the parking requirement on the above-referenced property. From reviewing your application we understand that you propose 240 parking spaces on the site, a 7% reduction of the 259 spaces required by the Unified Zoning Code (UZC).

Sec. V-I.2.i. of the Unified Zoning Code allows an adjustment to reduce the parking requirement by up to 10% when the conditions required by Sec. V-I.6. of the Code are met. We find that the reduction of the parking requirement as proposed meets the four conditions required by Sec. V-I.6. of the Code as set out below:

- 1) **Impact on safety and convenience of vehicular and pedestrian circulation**: The proposed reduction in parking requirement should have no detrimental impact on the safety and convenience of vehicular and pedestrian circulation in the vicinity of the application area. Sufficient parking should be available for the anticipated need, and the parking does not interfere with public right-of-way.
- 2) **Impact on existing uses in surrounding areas**: The proposed reduction in parking should not

City Hall • 10th Floor • 455 North Main • Wichita, Kansas 67202-1688

T 316.268.4421 F 316.268.4390

www.wichita.gov

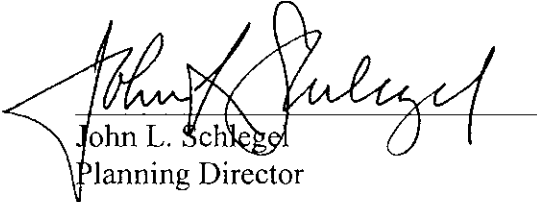
impact existing uses in surrounding areas, as all parking for this project should be adequately provided on the site.

- 3) Compatibility with existing or permitted uses on abutting sites: A reduction of 7% of the parking requirement should not compromise existing or permitted uses on abutting sites, as all parking for this project should be adequately provided on the site.
- 4) Effect on public health, safety or welfare: There will be no encroachment into public right of way or utility easements; therefore there should be no impact on the public's safety, health or welfare.

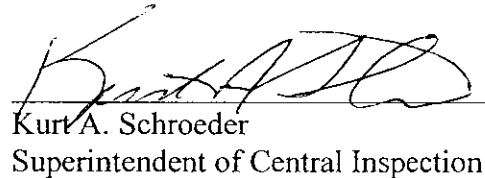
Our signatures below indicate that an administrative adjustment to reduce parking by 7%, from 259 to 240 spaces is hereby granted for the aforementioned property subject to the following conditions:

- 1) The site shall be developed in general conformance with the approved site plan.
- 2) All other standards of the Unified Zoning Code shall be met, unless an additional adjustment or variance is approved.
- 3) The parking area shall be paved and marked.
- 4) If the Zoning Administrator finds that there is a violation of any of the conditions of the Zoning Adjustment, the Zoning Administrator, in addition to enforcing the other remedies set forth in the Unified Zoning Code, may, with the concurrence of the Planning Director, declare the Zoning Adjustment null and void.

The "Development Application" sign should now be removed from the property.



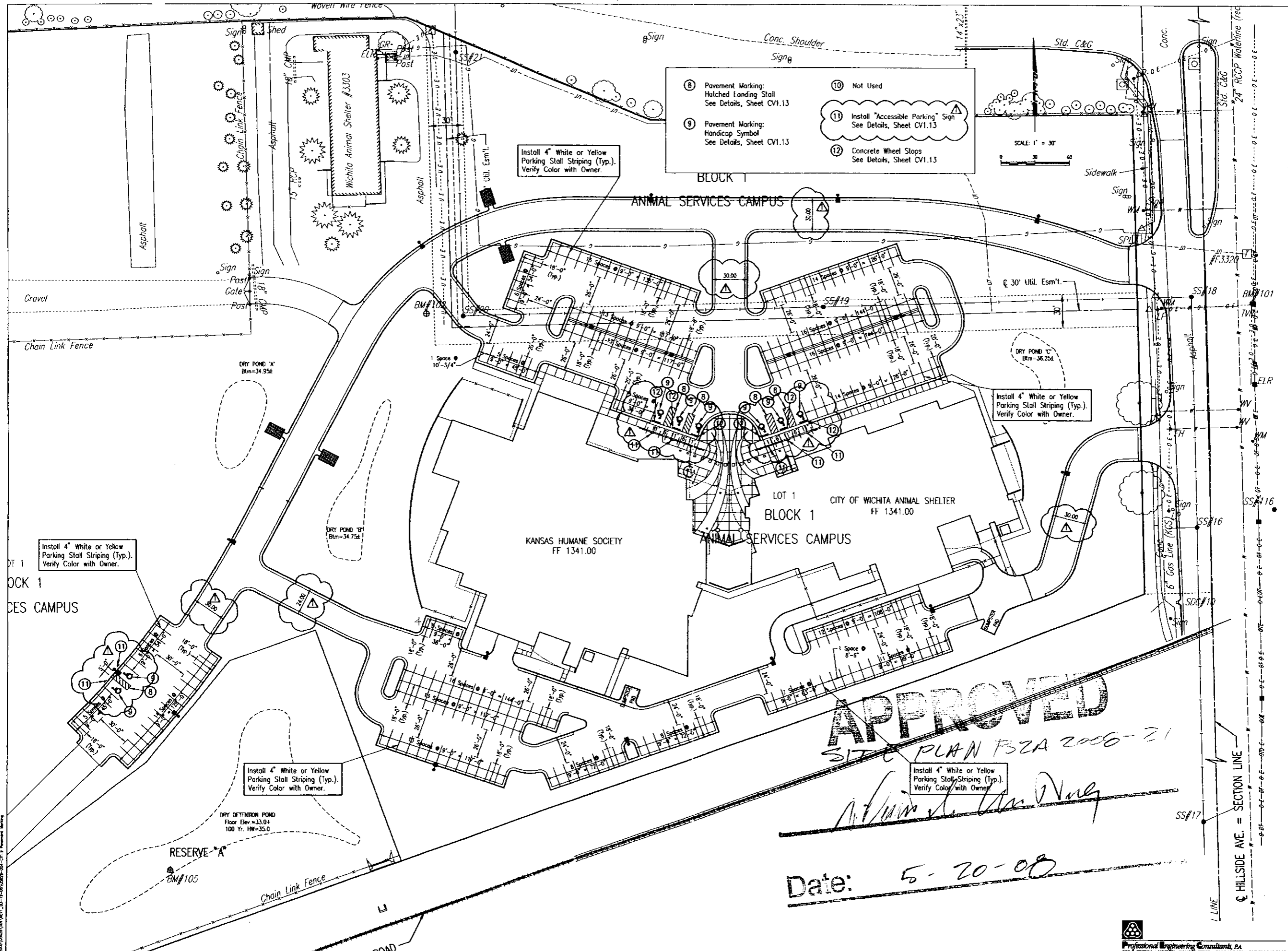
John L. Schlegel
Planning Director



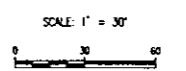
Kurt A. Schroeder
Superintendent of Central Inspection

Enclosure

cc: Kurt Schroeder, OCI
Paul Hays, OCI
Lavonta Williams, WCC I, Mail Stop 1-13



- 8 Pavement Marking: Hatched Landing Stall See Details, Sheet CV1.13
- 9 Pavement Marking: Handicap Symbol See Details, Sheet CV1.13
- 10 Not Used
- 11 Install "Accessible Parking" Sign See Details, Sheet CV1.13
- 12 Concrete Wheel Stops See Details, Sheet CV1.13



wcm
ARCHITECTS

WDM Architects P.A.
105 North Washington
Wichita, KS 67202-2815
T 316.262.4700
F 316.262.0002
wdmarchitects.com

WICHITA ANIMAL CARE CAMPUS

North Wichita, Kansas

APPROVED

SITE PLAN FSZA 2006-21

David W. Wernick

Date: 5-20-08

HILLSIDE AVE. = SECTION LINE

PRINTS ISSUED
JANUARY 17, 2008

REV. PER DCI 02/28/08

WDM No. _____ drawn: ABE
checked: DWH

PAVEMENT MARKING PLAN

CV1.9

Professional Engineering Consultants, P.A.
300 E. TOPEKA • WICHITA, KANSAS 67201 • 316.262.4700 • FAX 316.262.0002