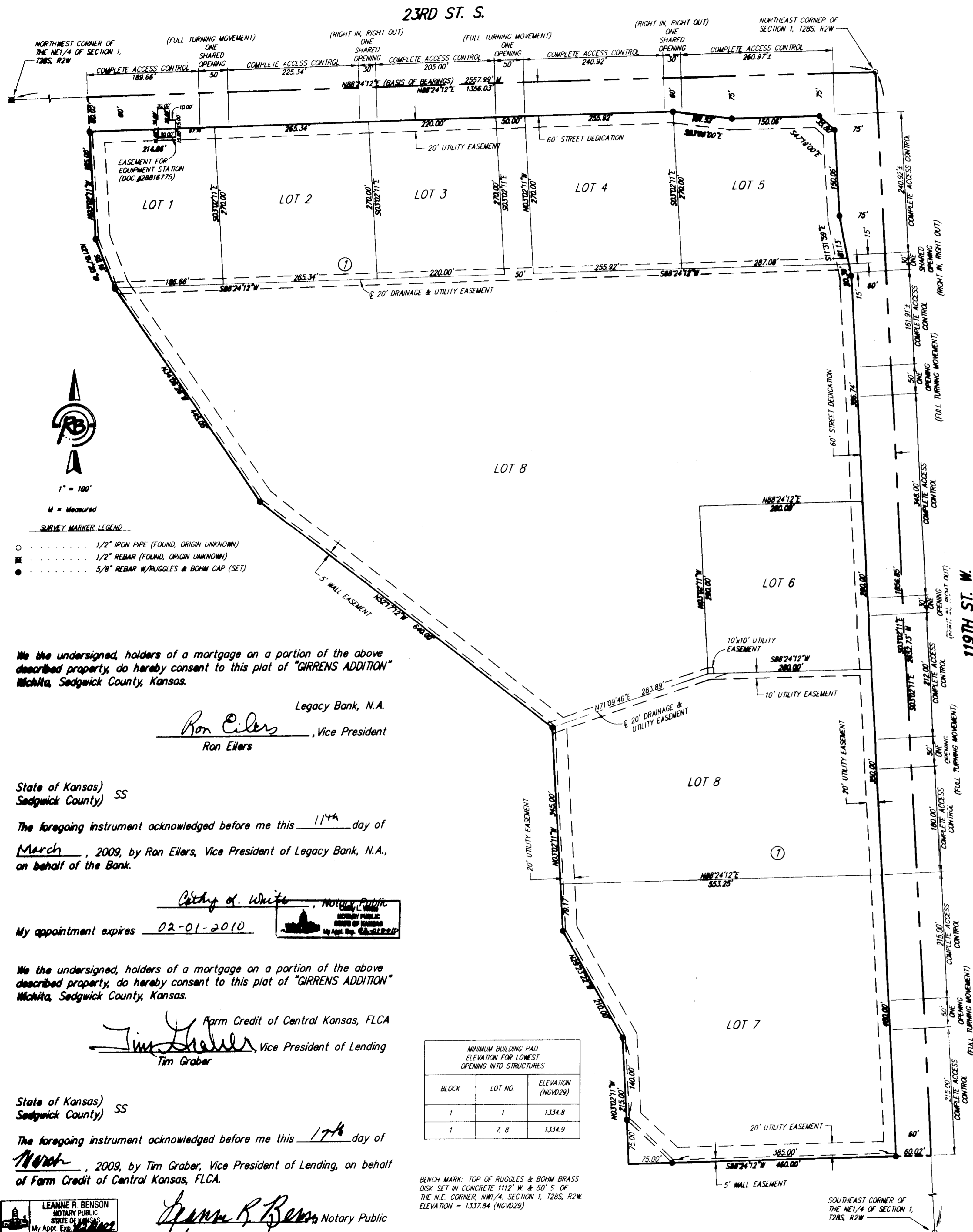


GIRRENS ADDITION

Wichita, Sedgwick County, Kansas

3-4-09
FILE COPY



State of Kansas) SS
Sedgwick County)

We, Ruggles & Bohm, P.A., Land Surveyors in aforesaid county and state, do hereby certify that, under the supervision of the undersigned, we have surveyed and platted "GIRRENS ADDITION", Wichita, Sedgwick County, Kansas, and that the accompanying plat is a true and correct exhibit of the property surveyed, described as follows:

That part of the NE 1/4 of Sec. 1, T28S, R2W of the 6th P.M., Sedgwick County, Kansas, described as beginning at the northeast corner thereof; thence S03°02'11"E along the east line of said NE 1/4, 1856.85 feet; thence S88°24'12"W, parallel with the north line of said NE 1/4, 520.02 feet; thence N03°02'11"W, parallel with said east line, 215.00 feet; thence N29°23'22"W, 210.00 feet; thence N03°02'11"W, parallel with said east line, 345.00 feet; thence N52°17'12"W, 640.00 feet; thence N34°06'28"W, 445.05 feet; thence N21°07'25"W, 90.16 feet; thence N03°02'11"W, parallel with said east line, 245.02 feet to the north line of said NE 1/4; thence N88°24'12"E along said north line, 1356.03 feet to the place of beginning.

All public easements and dedications are hereby vacated by virtue of K.S.A. 12-512(b).

Ruggles & Bohm, P.A.

Thomas C. Ruggles
Land Surveyor

Know all men by these presents that we, the undersigned, have caused the land described in the surveyor's certificate to be platted into Lots, a Block and Streets, to be known as "GIRRENS ADDITION", Wichita, Sedgwick County, Kansas. Access Controls as indicated are hereby granted to the appropriate governing body. The streets are hereby dedicated to and for the use of the public. Utility Easements are hereby granted for the construction and maintenance of all public utilities. The wall easement is hereby reserved for the construction and maintenance of a screening wall by the lot owners. The Drainage Easements are hereby granted to the public as indicated for drainage purposes. A drainage plan has been developed for this plat; the property shall remain at established grades, or as modified with the approval of the City Engineer, and unabstracted to allow for the conveyance of storm water.

William H. and Marilyn Joan Becker Living Trust Agreement

Marilyn J. Becker
Trustee

State of Kansas) SS
Sedgwick County)

The foregoing instrument acknowledged before me, this 6th day of February, 2009, by Alan S. Girrens.

Alan S. Girrens
Notary Public

My appointment expires 4/13/10

State of Kansas) SS
Sedgwick County)

The foregoing instrument acknowledged before me, this 6th day of February, 2009, by Marilyn Joan Becker, trustee under the William H. and Marilyn Joan Becker Living Trust Agreement.

Marilyn J. Becker
Notary Public

My appointment expires 4/13/10

We the undersigned, holders of a mortgage on a portion of the above described property, do hereby consent to this plat of "GIRRENS ADDITION" Wichita, Sedgwick County, Kansas.

Sunflower Bank, NA
Reid Cranmer, Vice President

State of Kansas) SS
Sedgwick County)

The foregoing instrument acknowledged before me this 5th day of February, 2009, by Reid Cranmer, Vice President, on behalf of Sunflower Bank, NA.

Susan Turner Reed
Notary Public

My appointment expires 8/10/10

This plat of "GIRRENS ADDITION", Wichita, Sedgwick County, Kansas, has been submitted to and approved by the Wichita-Sedgwick County Metropolitan Area Planning Commission, Wichita, Kansas.

Dated this ___ day of ___, 2009.

Wichita-Sedgwick County Metropolitan Area Planning Commission

Darrell Downing, Chair
John L. Schlegel, Secretary

This plat approved and all dedications shown hereon accepted by the City Council of the City of Wichita, Kansas, this ___ day of ___, 2009.

At the Direction of the City Council
Carl Brewer, Mayor
Karen Sublett, City Clerk

Reviewed in accordance with K.S.A. 58-2005 on this 2nd day of February, 2009.

L. Robello, LS #1246
Deputy County Surveyor
Sedgwick County Kansas

Entered on transfer record this ___ day of ___, 2009.

Kelly B. Arnold, County Clerk

State of Kansas) SS
Sedgwick County)

This is to certify that this plat has been filed for record in the office of the Register of Deeds, this ___ day of ___, 2009, at ___ o'clock ___ M., and is duly recorded.

Bill Meek, Register of Deeds
Tonya Buckingham, Deputy

We the undersigned, holders of a mortgage on a portion of the above described property, do hereby consent to this plat of "GIRRENS ADDITION" Wichita, Sedgwick County, Kansas.

Legacy Bank, N.A.
Ron Eilers, Vice President

State of Kansas) SS
Sedgwick County)

The foregoing instrument acknowledged before me this 11th day of March, 2009, by Ron Eilers, Vice President of Legacy Bank, N.A., on behalf of the Bank.

City of Wichita, Notary Public
My appointment expires 02-01-2010

We the undersigned, holders of a mortgage on a portion of the above described property, do hereby consent to this plat of "GIRRENS ADDITION" Wichita, Sedgwick County, Kansas.

Farm Credit of Central Kansas, FLCA
Tim Graber, Vice President of Lending

State of Kansas) SS
Sedgwick County)

The foregoing instrument acknowledged before me this 17th day of March, 2009, by Tim Graber, Vice President of Lending, on behalf of Farm Credit of Central Kansas, FLCA.

Leanne R. Benson, Notary Public
My appointment expires 4/2/2009

Ruggles & Bohm, P.A.
Engineering, Surveying, Land Planning

924 North Main
Wichita, Kansas 67203
www.rbkansas.com

(316) 264-8008
(316) 264-4821 fax
E-mail: info@rbkansas.com