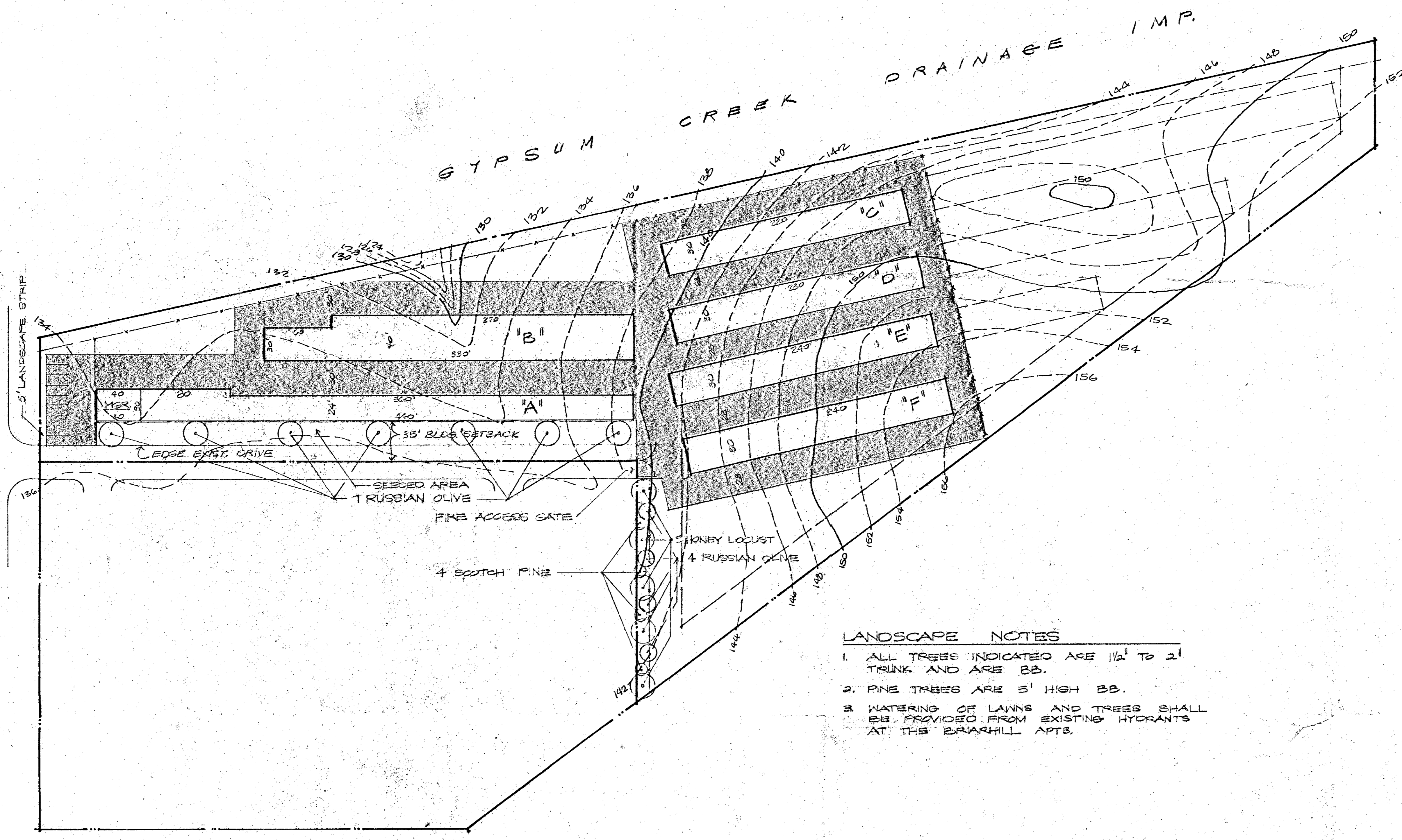


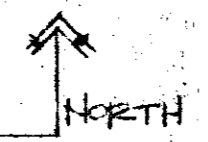
WOODLAWN (100 R.O.W.)



LANDSCAPE NOTES

1. ALL TREES INDICATED ARE 1 1/2" TO 2" TRUNK AND ARE BB.
2. PINE TREES ARE 3' HIGH BB.
3. WATERING OF LAWNS AND TREES SHALL BE PROVIDED FROM EXISTING HYDRANTS AT THE BRIARHILL APTS.

SITE PLAN
1" = 50 FEET



LANDSCAPE PLAN APPROVED
 FOR PARCEL No. 1 & 3
 OF THE
 BRIARWOOD COMMUNITY UNIT PLAN
 (DP-74)

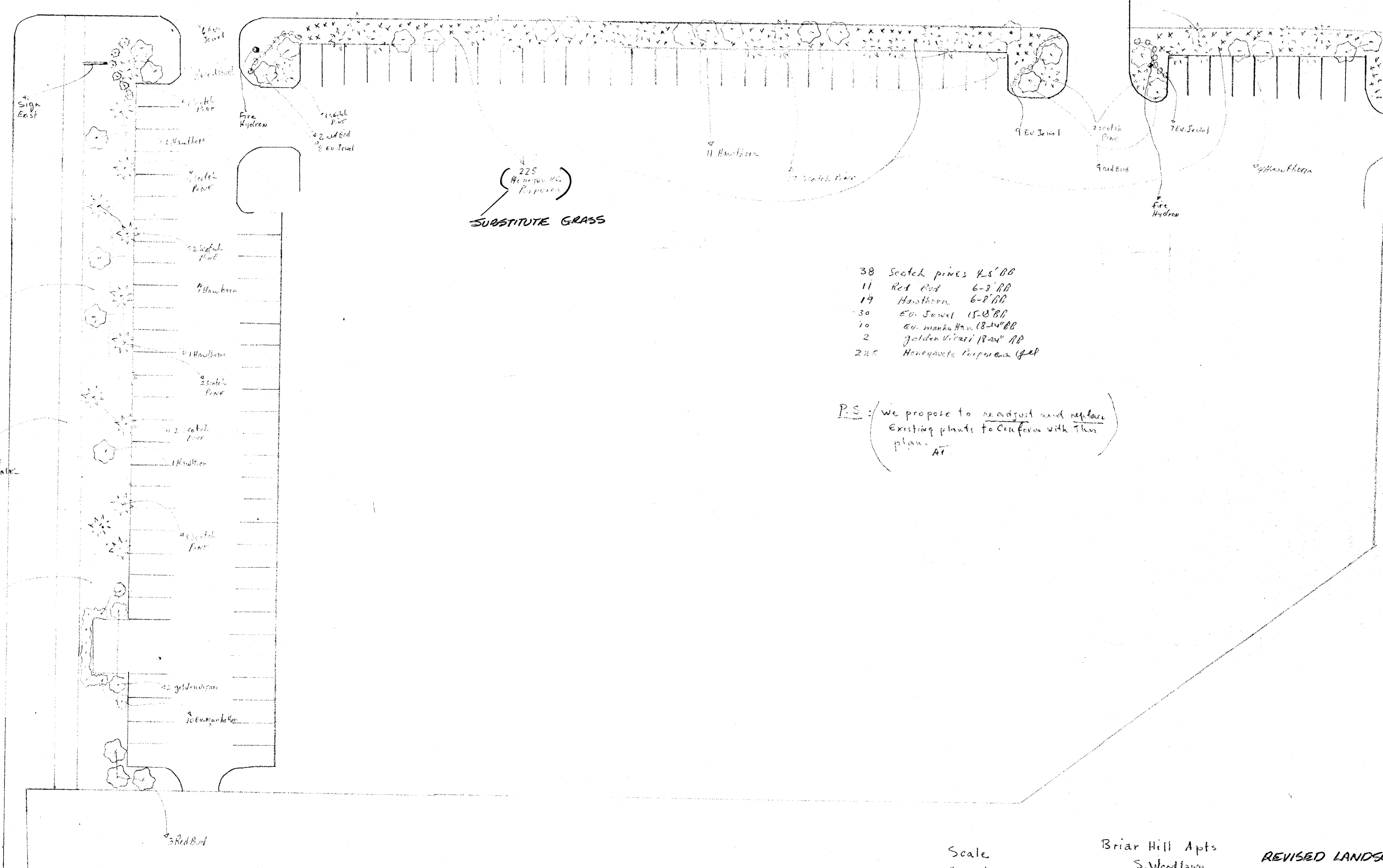
J. H. Albrecht 9-14-79
 date

RODGER A BROOKS - ARCHITECT
 EAST SIDE FINANCIAL CENTER
 7701 EAST KELLOGG AVENUE SUITE 725
 WICHITA, KANSAS 67207 (316) 894-0147

SOUTH WOODLAWN STORAGE
 1950 S. WOODLAWN WICHITA, KANSAS



9/14/79



- 38 Scotch pines 4-5' DB
- 11 Red Bird 6-8' DB
- 19 Hawthorn 6-8' DB
- 30 Eu. Javel 15-20' DB
- 10 Eu. Manhattan 18-24' DB
- 2 Golden Pines 18-24' DB
- 225 Honeyoaks (Lepidodermis)

P.S.: we propose to readjust and replace existing plants to conform with this plan. AT

Scale
1" = 20'-0"

Briar Hill Apts
S. Woodlawn
Wichita, Kansas
by
The Model Nursery
6823261

Adnan Fennelly
Grad Hort
11/28/78

REVISED LANDSCAPE PLAN
APPROVED FOR PARCEL No. 2
OF BRIARWOOD C.U.P. (DP-74)
J. Delbrail 12-15-78
date