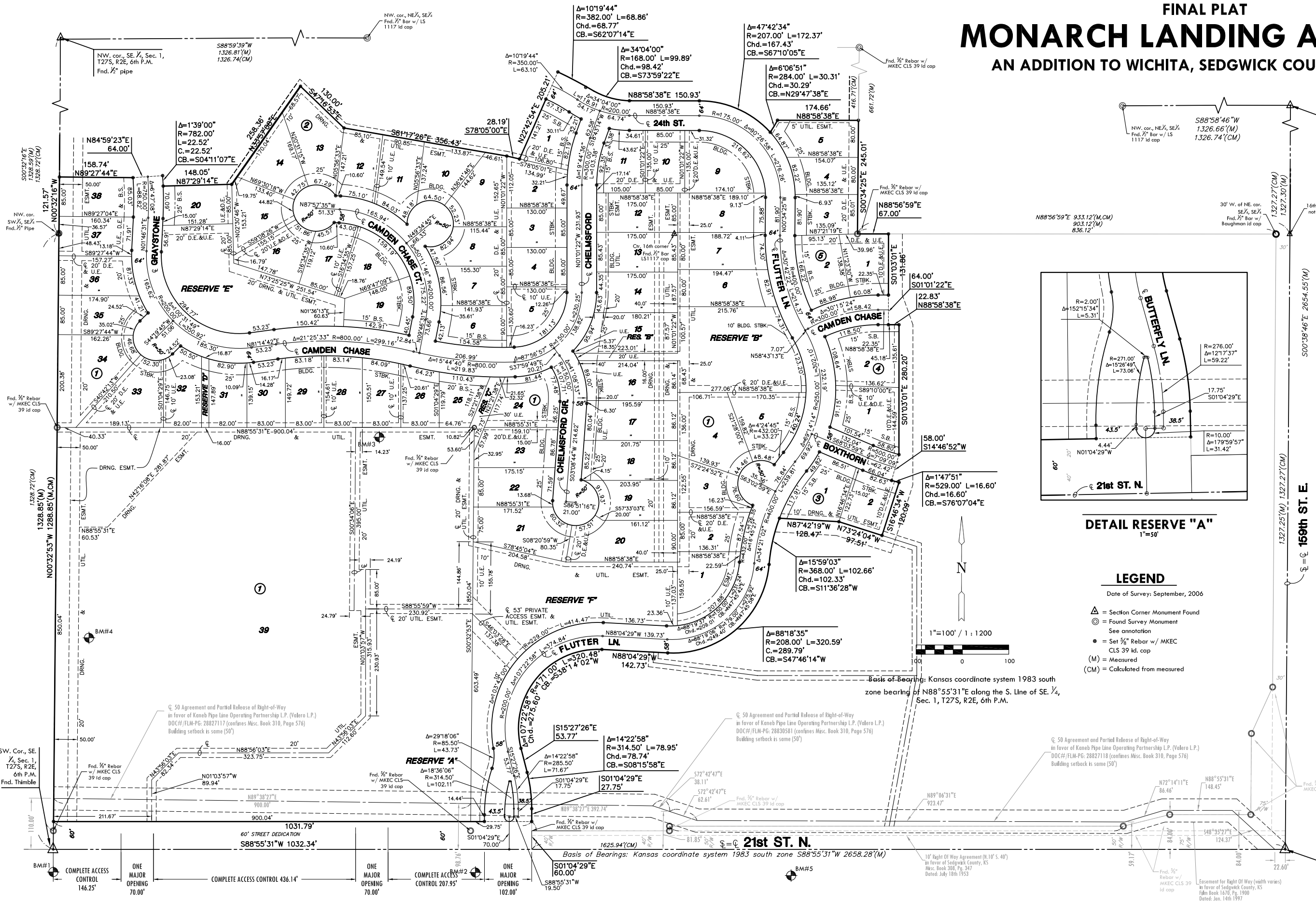


FINAL PLAT MONARCH LANDING ADDITION

AN ADDITION TO WICHITA, SEDGWICK COUNTY, KANSAS

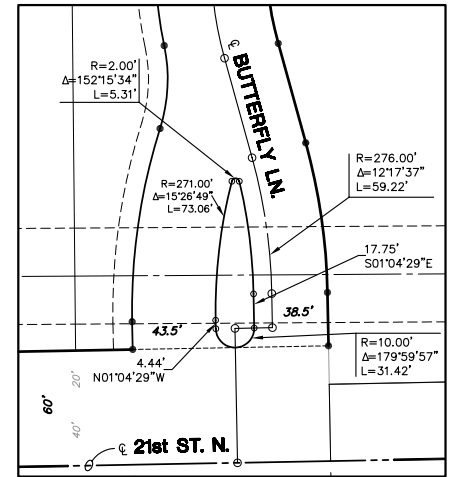


MINIMUM PAD ELEVATIONS
LOWEST OPENINGS

LOTS (inclusive)	BLOCK	ELEVATION NGVD
1, 20, 21	1	1372.4
15-20	2	1372.9

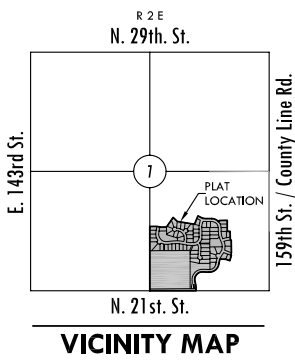
BENCH MARKS

- BM#1** Railroad spike in north side of power pole, 48' south of the South Quarter corner of Sec. 1, T27S, R2E. Elev. = 1364.78 NGVD 29
- BM#2** Railroad spike in north side of power pole, 924' east and 50' south of the northeast corner of the Lot 39, Blk. 1, 702' east and 889' north of the South Quarter of Sec. 1, T27S, R2E. Elev. = 1371.15 NGVD 29
- BM#3** Top of fence T-post 6' below ground, 206' West and 21' South of the northwest corner of the school site, 473' north and 85' east of the South Quarter corner of Sec. 1, T27S, R2E. Elev. = 1367.80 NGVD 29
- BM#4** Railroad spike in north side of power pole, 1040' west and 51' south of the southeast corner of Section 1, Township 27 South, Range 2 East. Elev. = 1368.50 NGVD 29
- BM#5** Railroad spike in north side of power pole, 1040' west and 51' south of the southeast corner of Section 1, Township 27 South, Range 2 East. Elev. = 1368.50 NGVD 29



LEGEND

- Date of Survey: September, 2006
- △ = Section Corner Monument Found
 - ⊙ = Found Survey Monument
 - See annotation
 - = Set 3/8" Rebar w/ MKEC CLS 39 id. cap
 - (M) = Measured
 - (CM) = Calculated from measured



SE. Cor., SE 1/4, Sec. 1, T27S, R2E, 6th P.M.
Fnd. 3/8" Pipe w/ Moehring id cap over thimble

MKEC
ENGINEERING
CONSULTANTS, INC.

411 N. WEBB ROAD
WICHITA, KS. 67206
316-684-9600