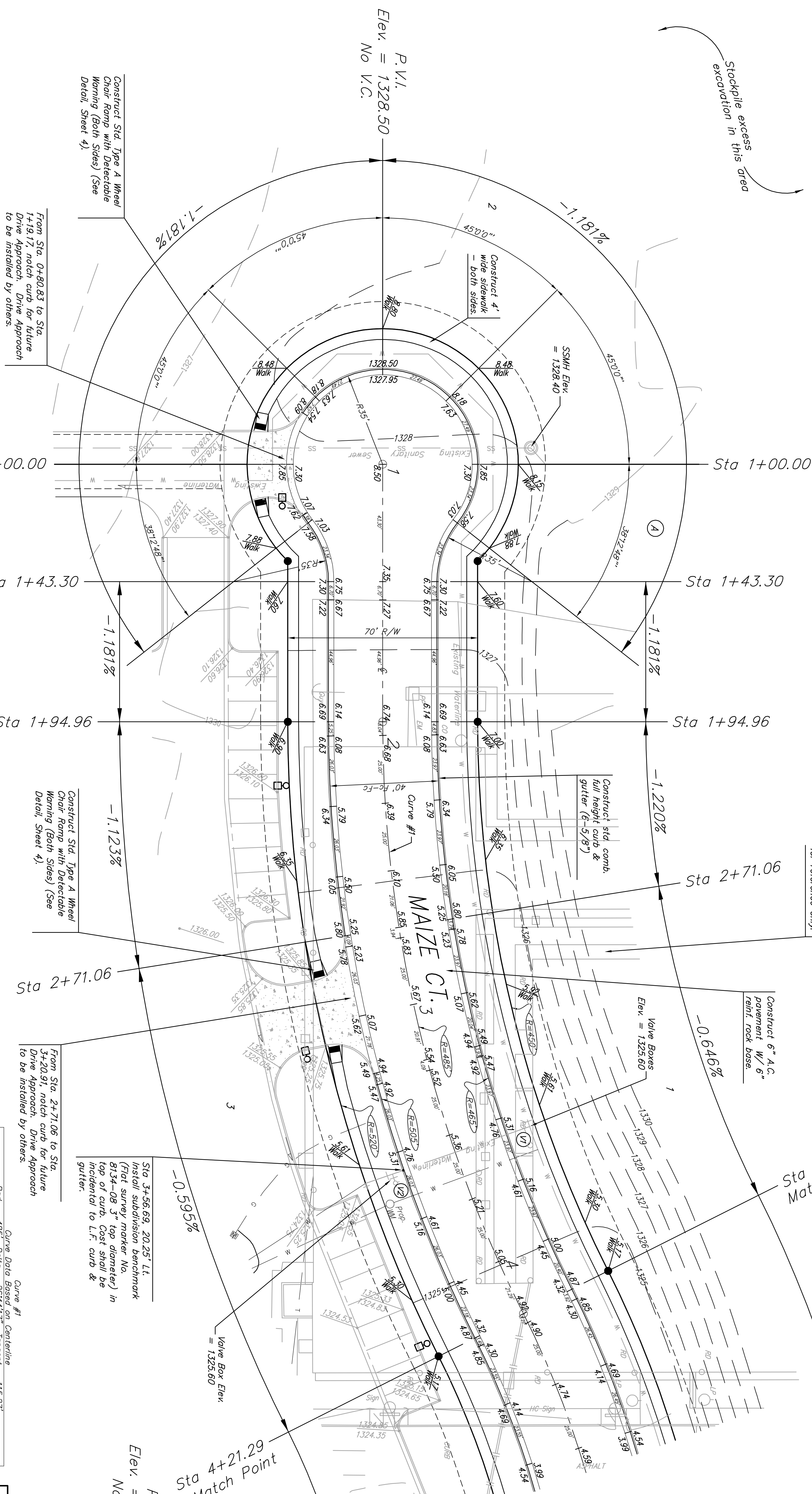


Scale: 1" = 20'
 • = Iron



WATER VALVE LOCATION TABLE

VALVE NUMBER	BASELINE STATION	OFFSET DISTANCE	OFFSET DIRECTION
V1	3+56.69	29'	Lt.
V2	3+56.69	24.5'	Rt.

Paving contractor will be responsible to operate all water valves on the project, in the presence of the inspector, to ensure accessibility to the valves, and that all valves are left in the "ON" position when the project is completed.

From Sta. 0+80.83 to Sta. 1+19.17, notch curb for future Drive Approach. Drive Approach to be installed by others.

Construct Std. Type A Wheel Chair Ramp with Detectable Warning (Both Sides) (See Detail, Sheet 4).

From Sta. 2+71.06 to Sta. 3+20.91, notch curb for future Drive Approach. Drive Approach to be installed by others.

Sta 3+56.69, 20.25' Lt. Install subdivision benchmark (Flat survey marker No. 8134-08 3" top diameter) in top of curb. Cost shall be incidental to L.F. curb & gutter.

Curve Data Based on Centerline

Station	Arc	FACE CHORD LENGTHS	8' Lt.	8' Rt.	Defl.	T. Defl.
1+94.96	5.04'	4.75'	5.33'	0.0000"	0.0000"	0.0000"
2+00.00	25.00'	23.55'	26.44'	0.1752"	0.1752"	0.1752"
2+25.00	25.00'	23.55'	26.44'	1.2836"	1.4628"	1.4628"
2+50.00	25.00'	23.55'	26.44'	2.2877"	3.1934"	3.1934"
2+71.06	21.06'	19.84'	22.27'	1.1438"	4.2942"	4.2942"
2+75.00	3.94'	3.71'	4.17'	0.1358"	4.4340"	4.4340"
3+00.00	25.00'	23.55'	26.44'	1.2836"	6.1216"	7.2623"
3+20.91	20.91'	19.70'	22.12'	1.1406"	7.2623"	7.2623"
3+25.00	4.09'	3.85'	4.33'	0.1430"	7.4053"	7.4053"
3+50.00	25.00'	23.55'	26.44'	1.2836"	9.0929"	9.0929"
3+75.00	25.00'	23.55'	26.44'	1.2836"	10.3805"	10.3805"
4+00.00	25.00'	23.55'	26.44'	1.2836"	12.0641"	12.0641"
4+21.29	21.29'	20.06'	22.52'	1.1927"	13.2208"	13.2208"

P.V.I. Elev. = 1326.69
 No V.C.

P.V.I. Elev. = 1325.80
 No V.C.

P.V.I. Elev. = 1324.87
 No V.C.

Baughman Street Paving
 Little 2nd Addition
 Maize Ct.

PROJECT NUMBER: 412/842/86
 DESIGN: MWS
 APPROVED: MWS
 DATE: 08/07

SCALE: NOTED
 SHEET: 5 OF 16
 06-06-E589