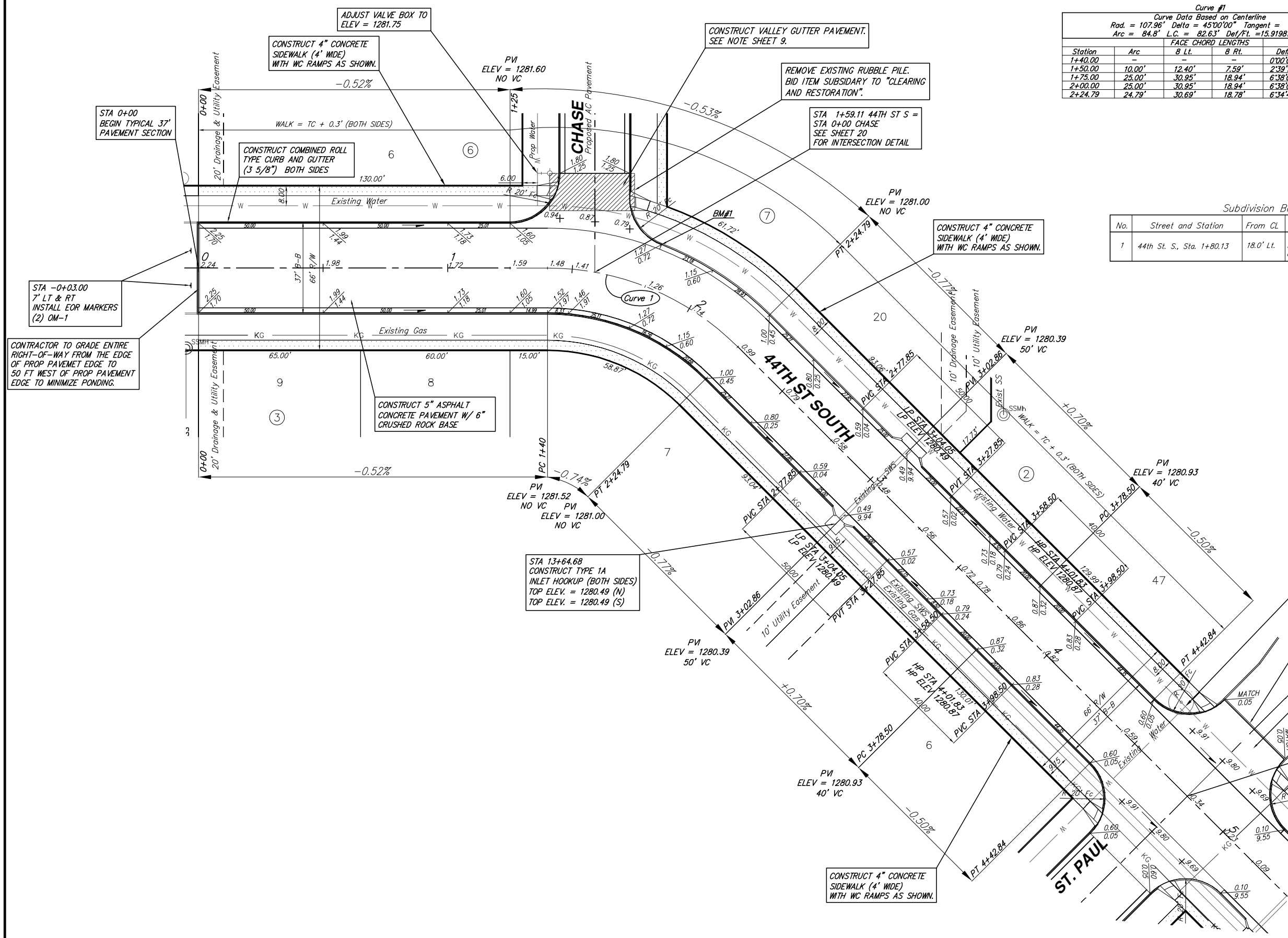
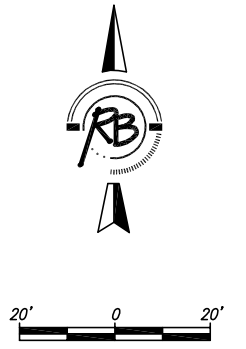


Curve #1  
Curve Data Based on Centerline  
Rad. = 107.96' Delta = 45°00'00" Tangent = 44.72'  
Arc = 84.8' L.C. = 82.63' Def/Ft. = 15.91981 Min.

Station	Arc	FACE CHORD LENGTHS		Defl.	T. Defl.
		8 Lt.	8 Rt.		
1+40.00	-	-	-	0°00'00"	0°00'00"
1+50.00	10.00'	12.40'	7.59'	2°39'13"	2°39'13"
1+75.00	25.00'	30.95'	18.94'	6°38'02"	9°17'15"
2+00.00	25.00'	30.95'	18.94'	6°38'02"	15°55'17"
2+24.79	24.79'	30.69'	18.78'	6°34'42"	22°29'59"

Subdivision Bench Marks

No.	Street and Station	From CL	Description	Elevation
1	44th St. S., Sta. 1+80.13	18.0' Lt.	S.E. End of Curb Return, Intersection of 44th St. S. and Chase	



Legacy 3rd Addition  
44th Street South  
WICHITA, KANSAS

**Ruggles & Bohm, P.A.**  
Engineering, Surveying, Land Planning

924 North Main (316) 264-8008  
Wichita, Kansas 67203 (316) 264-4621 fax  
www.rbkansas.com E-mail: info@rbkansas.com

DESIGN: KWL  
DRAWN: RLS  
REVIEW:  
UTILITY:  
DATE: Feb. 9, 2007

PROJECT NUMBER: 472-84525

SHEET: 7 OF 43