

GENERAL NOTES:

- THE CONTRACTOR SHALL COMPLY WITH ALL APPLICABLE SAFETY REGULATIONS. ALL CONSTRUCTION SHALL BE COMPLETED FOLLOWING CURRENT CITY STANDARD SPECIFICATIONS AND SPECIAL PROVISIONS.
- THE CONTRACTOR WILL BE REQUIRED TO PROVIDE NOTICE TO UTILITY COMPANIES A MINIMUM OF SEVENTY-TWO (72) HOURS PRIOR TO ANY EXCAVATION, AS FOLLOWS:

KANSAS ONE-CALL 687-2470

THE CONTRACTOR MUST NOTIFY THE FOLLOWING IN CASE OF AN EMERGENCY:

AT&T 1-800-246-8464
BLACK HILLS ENERGY 1-800-694-8989
CITY OF WICHITA WATER & SEWER 1-316-219-8921
CITY OF WICHITA STORMWATER 1-316-268-4090
CITY OF WICHITA TRAFFIC 1-316-268-4034
COX COMMUNICATIONS 1-888-249-3530
KANSAS GAS SERVICE 1-888-482-4950
EVERGY 1-800-544-4857
- UTILITY SERVICE LINES, POLES, ET CETERA. ARE TO BE ADJUSTED AS NECESSARY BY OTHERS PRIOR TO CONSTRUCTION UNLESS THE PLANS SPECIFICALLY CALL FOR THEIR ADJUSTMENT BY THE CONTRACTOR OR UNLESS THE PLANS SPECIFICALLY IDENTIFY A UTILITY TO BE ADJUSTED BY ITS OWNER DURING CONSTRUCTION. EXISTING UTILITIES AND THEIR LOCATION, AS SHOWN ON THE PLANS, REPRESENT THE BEST INFORMATION REASONABLY OBTAINABLE FOR DESIGN. THE CONTRACTOR WILL BE REQUIRED TO WORK AROUND EXISTING UTILITIES WITHIN THE RIGHT-OF-WAY THAT DO NOT CONFLICT WITH PROPOSED CONSTRUCTION.
- RUBBLE FROM THE REMOVAL OF MISCELLANEOUS STRUCTURES AND EXCESS EXCAVATION THAT IS TO BE WASTED SHALL BE DISPOSED OF ON SITES TO BE PROVIDED BY THE CONTRACTOR. THESE SITES SHALL BE APPROVED BY THE ENGINEER AS TO SUITABILITY, APPEARANCE AND SITE LOCATION. LOCATIONS, IN THE OPINION OF THE ENGINEER, THAT WILL LEAVE AN UNSIGHTLY APPEARANCE WILL NOT BE APPROVED. ALL DISPOSAL SITES MUST BE APPROVED BY THE KANSAS DEPARTMENT OF HEALTH AND ENVIRONMENT. MATERIAL EITHER STOCKPILED OR DISPOSED OF IN A FLOODPLAIN FILL WILL REQUIRE A KANSAS STATE BOARD OF AGRICULTURE FLOODPLAIN FILL PERMIT. ANY MATERIAL DUMPED IN WATERS OF THE UNITED STATES OR WETLANDS IS SUBJECT TO U.S. CORPS. OF ENGINEERS PERMITTING REGULATIONS. ANY MATERIAL BURIED OR STOCKPILED BEYOND APPROVED CONSTRUCTION LIMITS WILL REQUIRE ADDITIONAL ARCHAEOLOGICAL INVESTIGATIONS UNLESS BURIED OR STOCKPILED IN A PREVIOUSLY APPROVED BORROW LOCATION.
- TREES AND SHRUBS IN PUBLIC RIGHT-OF-WAY WHICH ARE IN DIRECT CONFLICT WITH PROPOSED NEW CONSTRUCTION SHALL BE REMOVED BY THE CONTRACTOR WITH THE ENGINEER'S APPROVAL. TREES AND SHRUBS THAT ARE NOT IN DIRECT CONFLICT WITH PROPOSED NEW CONSTRUCTION SHALL BE SAVED AND PROTECTED FROM DAMAGE.
- IF PRACTICABLE THE CONTRACTOR SHALL GIVE ALL PROPERTY OWNERS AND/OR TENANTS OF DEVELOPED PROPERTY ADJUTING THE CONSTRUCTION OF THIS PROJECT A MINIMUM OF TEN (10) DAYS NOTICE PRIOR TO START OF CONSTRUCTION.
- THE CONTRACTOR SHALL BE RESPONSIBLE FOR PRESERVING PROPERTY IRONS. THE CONTRACTOR WILL BE REQUIRED TO REESTABLISH ANY PROPERTY IRONS WHICH ARE DAMAGED OR DESTROYED BY HIS CONSTRUCTION OPERATIONS. SUCH IRONS SHALL BE REESTABLISHED BY A LICENSED LAND SURVEYOR IN ACCORDANCE WITH STATE LAWS.
- THE ENGINEERING DIVISION SHALL FIELD LOCATE WATER VALVES ONE TIME DURING CONSTRUCTION WHEN REQUESTED BY THE CONTRACTOR. IT SHALL BE THE CONTRACTOR'S RESPONSIBILITY TO PRESERVE SUCH FIELD LOCATIONS DURING THE CONSTRUCTION PROCESS. WATER VALVES, VALVE BOXES OR FIRE HYDRANTS DAMAGED DURING CONSTRUCTION SHALL BE REPAIRED BY CONTRACTOR AT THEIR OWN EXPENSE. VALVE BOXES AND WATER METERS WITHIN THE PROJECT LIMITS SHALL BE ADJUSTED TO MATCH FINAL GRADES BY THE CONTRACTOR.
- IF TRAFFIC WILL BE IMPACTED BY CONSTRUCTION, A TRAFFIC CONTROL PLAN MUST BE SUBMITTED AND APPROVED BY THE CITY TRAFFIC ENGINEER AT TRAFFIC@WICHITA.GOV BEFORE CONSTRUCTION CAN BEGIN. THE CONTRACTOR SHALL BE RESPONSIBLE FOR ALL TRAFFIC CONTROL MEASURES TO FACILITATE CONSTRUCTION. ALL CONSTRUCTION ZONE MARKINGS AND SIGNAGE SHALL CONFORM TO THE LATEST VERSION OF THE MANUAL ON UNIFORM TRAFFIC CONTROL DEVICES (MUTCD) AS PUBLISHED BY THE US DEPT. OF TRANSPORTATION, FEDERAL HIGHWAY ADMINISTRATION. ALL COSTS ASSOCIATED WITH CONSTRUCTION MARKINGS AND SIGNAGE SHALL BE THE CONTRACTORS RESPONSIBILITY.
- ALL ELEVATIONS SHOWN ARE NAVD 88.
- ALL AREAS DISTURBED DURING CONSTRUCTION THAT WILL NOT BE UNDER PROPOSED PAVEMENT SHALL BE RESTORED TO MATCH EXISTING CONDITIONS.
- CITY MAINTENANCE OF SANITARY SEWER MAINS ENDS AT LAST STRUCTURE WITHIN THE EASEMENT OR RIGHT-OF-WAY.
- ALL STUBS AND CAPPED PIPES SHALL BE LOCATED WITH GREEN PLASTIC TAPE IN THE SAME MANNER AS RISERS.

- CONNECTING TO EXISTING MANHOLES: PRIOR TO LAYING SEWER LINES USING EXISTING STUBS IN EXISTING MANHOLES, THE CONTRACTOR SHALL EXPOSE AND VERIFY THE ELEVATION, GRADE AND ALIGNMENT OF EXISTING STUBS AND NOTIFY THE ENGINEER OF ANY DEVIATION FROM THE PLANS. WHERE THE STUB IS UNUSABLE DUE TO ELEVATION GRADE OR ALIGNMENT, THE CONTRACTOR SHALL REMOVE THE STUB AND PLUG THE HOLE, AND THE EXISTING MANHOLE INVERT TO PROVIDE WHERE CONNECTING TO AN EXISTING MANHOLE NOT HAVE AN EXISTING STUB, THE CONTRACTOR SHALL CORE CUT INTO EXISTING MANHOLE WALL TO CONNECTION USING APPROVED WATER STOP RESHAPE THE EXISTING MANHOLE INVERT TO SMOOTH FLOW. THE COST TO CONNECTING TO MANHOLES IS INCIDENTAL TO THE PROJECT.
- CONTRACTOR SHALL LIMIT THE EXTENT OF TR OPEN OVERNIGHT AND WEEKENDS TO LESS THAN 24 HOURS.
- CONTRACTOR SHALL PROVIDE POSITIVE DRAINAGE AWAY FROM ALL MANHOLE COVERS.
- THE CONTRACTOR SHALL PREVENT ANY CONSTRUCTION DEBRIS FROM ENTERING THE EXISTING SANITARY SEWER DURING CONSTRUCTION.
- THE CONTRACTOR SHALL BE RESPONSIBLE FOR MAINTAINING CONTINUOUS FLOW OF SEWAGE THROUGH CONSTRUCTION. CONTRACTORS PROPOSED METHOD FOR MAINTAINING SEWAGE FLOW SHALL BE SUBMITTED AND APPROVED BY THE SEWER MAINTENANCE DIVISION (316-268-4073) PRIOR TO STARTING AND BY-PASSING OF SEWAGE FLOWS.
- ANY OVER EXCAVATION FROM MANHOLE AND PIPE REMOVAL SHALL BE BACKFILLED WITH AB-3 COMPACTED TO 90-95% ASTM D698.
- THE CONTRACTOR SHALL PROTECT FROM DAMAGE AND SUPPORT EXISTING UTILITIES THROUGH CONSTRUCTION AS APPROVED BY THE UTILITY OWNER AND THE ENGINEER AT THE CONTRACTORS EXPENSE.
- THE CONTRACTOR SHALL USE BEST MANAGEMENT PRACTICES (BMP'S) TO PREVENT ERODED SOIL FROM ENTERING DITCHES, CULVERTS, AND DRAINAGE BASINS. THE CONTRACTOR SHALL FOLLOW THE INTENT OF THE BMP'S WHICH ACT AS A GUIDELINE.
- EACH BIDDER SHALL VISIT THE SITE OF THE PROJECT BEFORE SUBMITTING A PROPOSAL IN ORDER TO BECOME BETTER INFORMED OF THE EXISTING FIELD CONDITIONS AND OBSTACLES WHICH MIGHT BE ENCOUNTERED DURING CONSTRUCTION. EACH BIDDER SHOULD UNDERSTAND THAT NO ADDITIONAL COMPENSATION WILL BE AWARDED FOR EXTRA WORK THAT SHOULD HAVE BEEN EVALUATED PRIOR TO BIDDING.
- EXISTING UTILITIES AND THEIR LOCATIONS, AS SHOWN ON THE PLANS REPRESENT THE BEST INFORMATION OBTAINABLE FOR DESIGN. LOCATION INFORMATION HAS BEEN OBTAINED FROM VARIOUS COMPANIES AND IS EITHER FROM COMPANY UTILITY DRAWINGS OR COMPANY PROVIDED FIELD LOCATIONS. THE PLAN LOCATIONS SHOWN ARE NOT GUARANTEED. ADDITIONAL EXISTING UTILITIES MAY BE ENCOUNTERED.
- ANY AND ALL UTILITY SYSTEM COMPONENTS DAMAGED DURING CONSTRUCTION SHALL BE REPAIRED AT THE CONTRACTOR'S EXPENSE.
- THE PRECAST MANUFACTURER SHALL PROVIDE A SEALED DESIGN DETAIL FOR ALL PRECAST ITEMS USED ON THE PROJECT TO INSURE THE INTENT OF THE PLANS ARE MET.
- CITY OF WICHITA WILL PROVIDE INSPECTION AND CONSTRUCTION STAKING.
- MAINTAIN A MINIMUM OF 10-FOOT HORIZONTAL SEPARATION BETWEEN ALL WATER LINES (MAINS, SERVICES, AND FIRE HYDRANTS). AND ALL SANITARY SEWER LINES (MAINS, SERVICES, AND MANHOLES). ALL SEPARATION DISTANCES ARE TO BE MEASURED FROM EDGE-TO-EDGE AT THE CLOSEST POINT.
- MAINTAIN A MINIMUM OF 2-FOOT VERTICAL SEPARATION BETWEEN ALL WATER LINES (MAINS AND SERVICES) AND ALL GRAVITY SANITARY SEWER LINES (MAINS, SERVICES, AND MANHOLES) AT CROSSINGS. ALL SEPARATION DISTANCES ARE TO BE MEASURED FROM EDGE-TO-EDGE, AT THE CLOSEST POINT.
- MAINTAIN A MINIMUM OF 2-FOOT VERTICAL SEPARATION BETWEEN ALL WATER LINES (MAIN AND SERVICES) AND ALL PRESSURIZED SANITARY SEWER LINES (FORCED MAINS AND SERVICES) AT CROSSINGS. WATERLINES MUST ALWAYS BE PLACED ABOVE PRESSURIZED SANITARY SEWER LINES WHERE THEY CROSS. ALL SEPARATION DISTANCES ARE TO BE MEASURED FROM EDGE-TO-EDGE, AT THE CLOSEST POINT.

Mies Constraction - Contractor
S. Lowe - City of Wichita, Field Project Engineer
R. Carillo - City of Wichita, Inspector
As-Built
Release Date (for connection purposes only): 6/3/2025
pdf: apr 6/3/2025

SANITARY SEWER IMPROVEMENTS

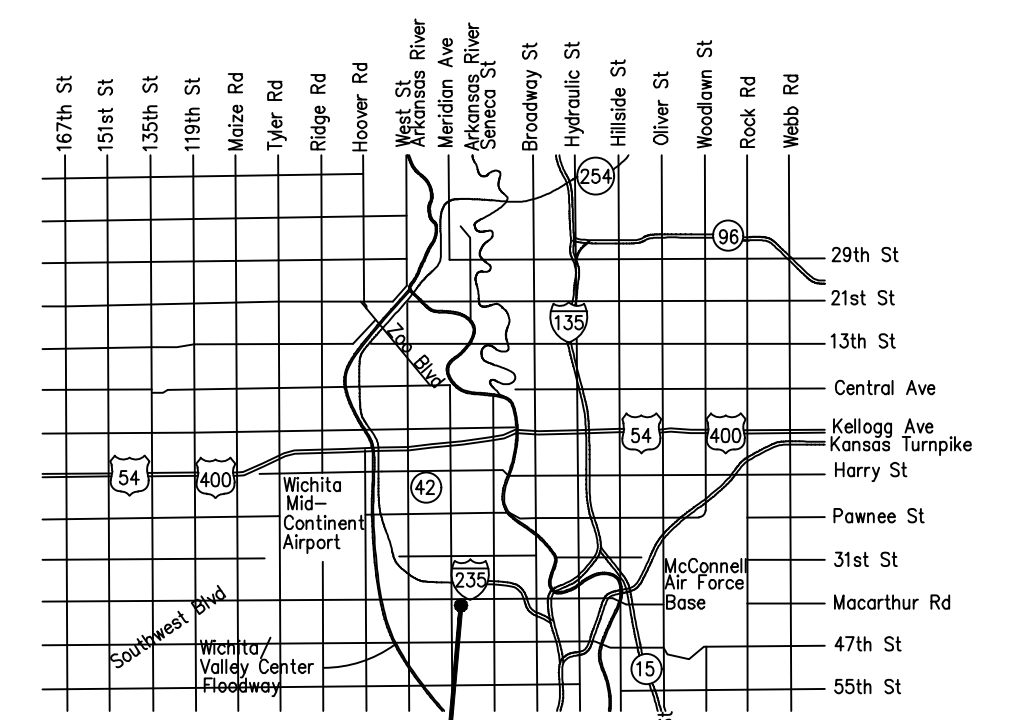
to serve

MAC MERIDIAN ADDITION CITY OF WICHITA, KANSAS

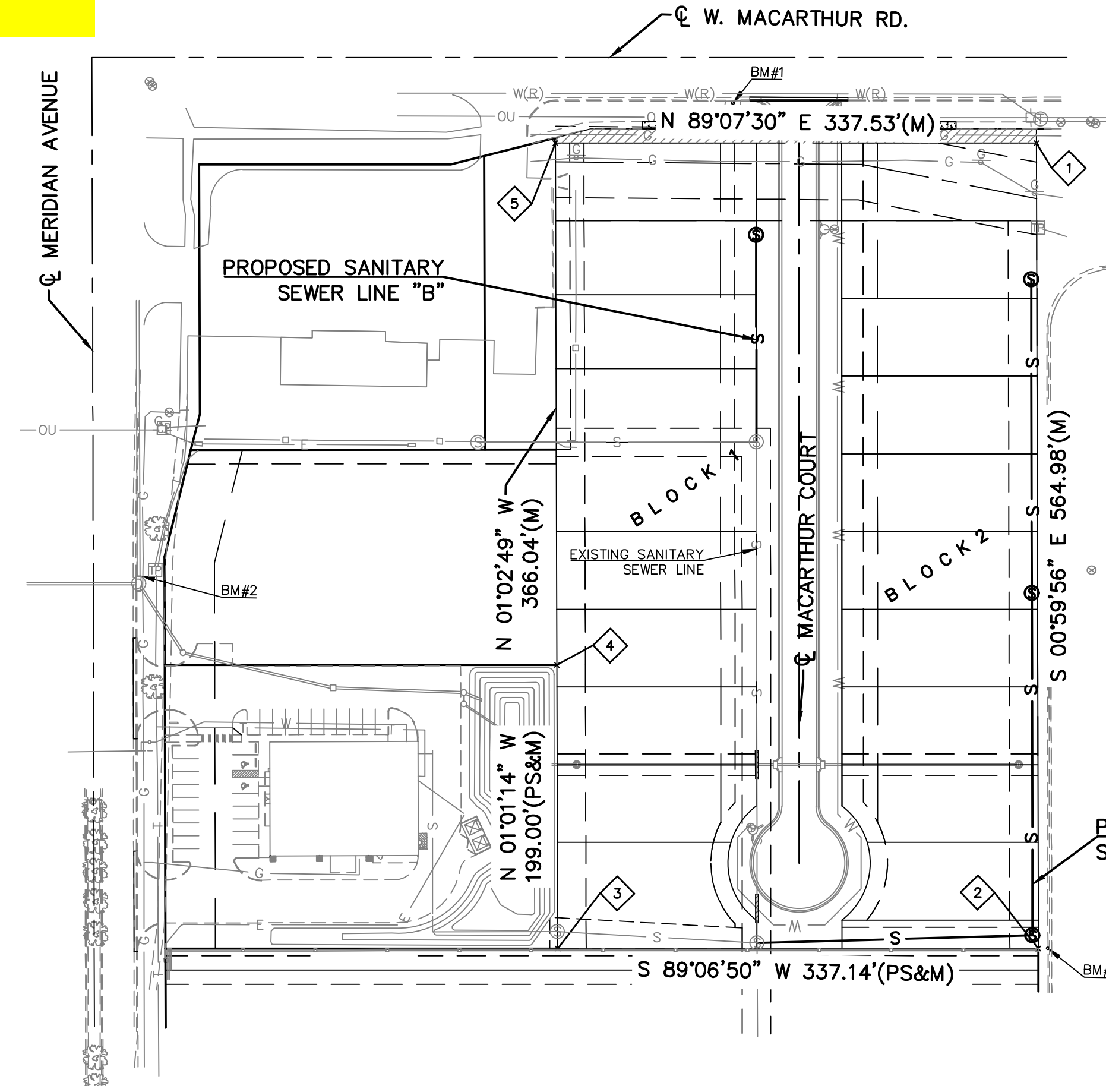
PAUL GUNZELMAN, P.E. CITY ENGINEER

PROJECT NUMBER: 468-2023-018112

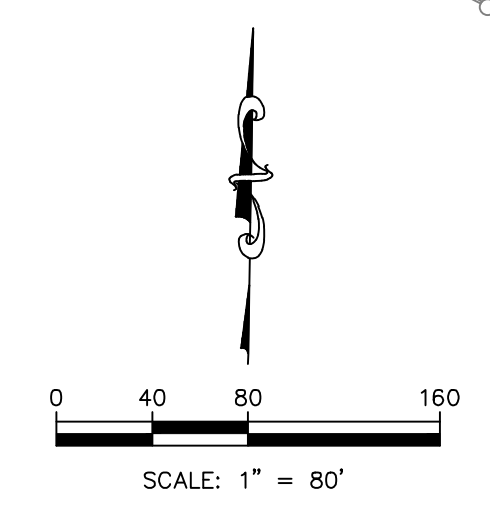
ORG. CODE: 47269223; MUNIS. #: E3109



SITE
VICINITY MAP



COORDINATE TABLE		
POINT #	NORTHING	EASTING
1	1662259.10	1640071.93
2	1661694.21	1640081.77
3	1661689.00	1639744.67
4	1661887.97	1639741.13
5	1662253.95	1639734.44



DEVELOPER INFORMATION:
TRAVIS WHISLER
TNA, LLC
1815 SOUTHWEST BOULEVARD
WICHITA, KANSAS 67213
T.W.CUSTOMHOMES@AOL.COM

SAFETY NOTICE TO CONTRACTOR
IN ACCORDANCE WITH GENERALLY ACCEPTED CONSTRUCTION PRACTICES, THE CONTRACTOR WILL BE SOLELY AND COMPLETELY RESPONSIBLE FOR CONDITIONS OF THE JOB SITE, INCLUDING SAFETY OF ALL PERSONS AND PROPERTY DURING PERFORMANCE OF THE WORK. THIS REQUIREMENT WILL APPLY CONTINUOUSLY AND NOT BE LIMITED TO NORMAL WORKING HOURS.

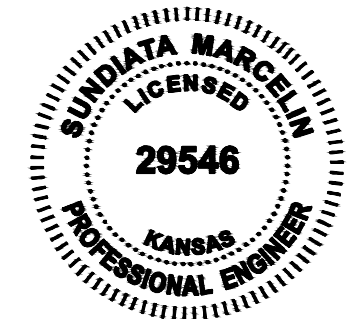
WARRANTY / DISCLAIMER
THE DESIGNS REPRESENTED IN THESE PLANS ARE IN ACCORDANCE WITH ESTABLISHED PRACTICES OF CIVIL ENGINEERING FOR THE DESIGN FUNCTIONS AND USES INTENDED BY THE OWNER AT THIS TIME. HOWEVER, NEITHER KAW VALLEY ENGINEERING, INC NOR ITS PERSONNEL, CAN OR DO WARRANT THESE DESIGNS OR PLANS AS CONSTRUCTED, EXCEPT IN THE SPECIFIC CASES WHERE KAW VALLEY ENGINEERING PERSONNEL INSPECT AND CONTROL THE PHYSICAL CONSTRUCTION ON A CONTEMPORARY BASIS AT THE SITE.

CAUTION - NOTICE TO CONTRACTOR
THE CONTRACTOR IS SPECIFICALLY CAUTIONED THAT THE LOCATION AND/OR ELEVATION OF EXISTING UTILITIES AS SHOWN ON THESE PLANS IS BASED ON RECORDS OF THE VARIOUS UTILITY COMPANIES AND, WHERE POSSIBLE, MEASUREMENTS TAKEN IN THE FIELD. THE INFORMATION IS NOT TO BE RELIED ON AS BEING EXACT OR COMPLETE. THE CONTRACTOR MUST CALL THE APPROPRIATE UTILITY COMPANY AT LEAST 72 HOURS BEFORE ANY EXCAVATION TO REQUEST EXACT FIELD LOCATION OF UTILITIES. IT SHALL BE THE RESPONSIBILITY OF THE CONTRACTOR TO RELOCATE ALL EXISTING UTILITIES WHICH CONFLICT WITH PROPOSED IMPROVEMENTS SHOWN ON THE PLANS.
THE CONTRACTOR SHALL EXPOSE EXISTING UTILITIES AT LOCATIONS OF POSSIBLE CONFLICTS PRIOR TO ANY CONSTRUCTION.

THIS PLAN SHEET IS PART OF AN OVERALL KAW VALLEY ENGINEERING PLAN SET FOR THE SPECIFIC IMPROVEMENTS CONTEMPLATED THEREIN. AS SUCH, THE INFORMATION CONTAINED MAY BE LIMITED AND SHOULD ONLY BE INTERPRETED WITHIN THE CONTEXT OF THE COMPLETE PLAN SET.

BENCHMARKS

- DATUM BENCHMARK:**
VERTICAL DATUM IS NAVD 88 DERIVED FROM USING THE WICHITA NTRIP NETWORK ORTHOMETRIC HEIGHT WAS DETERMINED USING THE GEOD 18 MODEL.
- BENCHMARKS:**
BM #1: CHISELED "SQUARE" CUT ON TOP OF CURB INLET, SOUTH SIDE OF MACARTHUR RD. AND 440 FT +/- EAST OF MERIDIAN AVE. ELEV=1283.53
BM #2: CHISELED "SQUARE" CUT ON TOP OF NORTHEAST CORNER OF CURB INLET ON MERIDIAN AVE. ELEV=1283.93
BM #3: CHISELED "SQUARE" CUT ON TOP OF CURB 9 FT +/- EAST OF THE SOUTHEAST PROPERTY CORNER. ELEV=1282.58

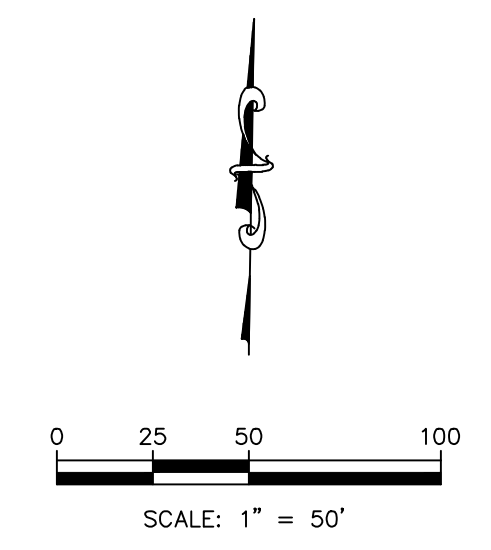
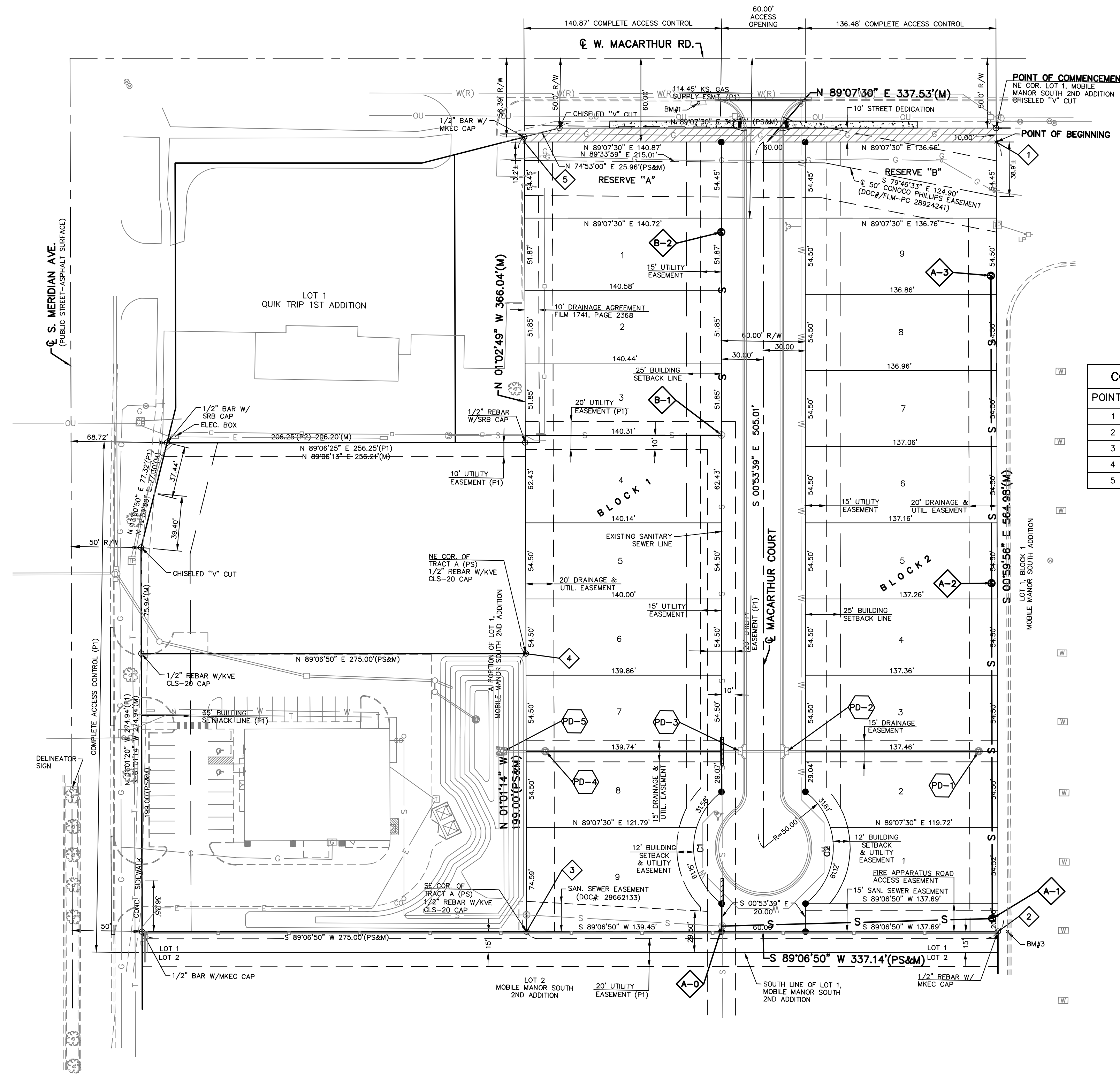


MARCH 2024

PROJ. NO. G21-1997 DSN: SMM SUNDIATA MARCELIN
CFN: 19975TS DWN: TDA ENGINEER
KS # 29546
9139 E. 37TH STREET NORTH
WICHITA, KANSAS 67226
PH. (316) 440-4304
www.kveng.com | www.kveng.com

KAW VALLEY ENGINEERING

KAW VALLEY ENGINEERING, INC., IS AUTHORIZED TO OFFER ENGINEERING SERVICES BY KANSAS STATE CERTIFICATE OF AUTHORIZATION # E-113. EXPIRES 12/31/24



POINT #	NORTHING	EASTING
1	1662259.10	1640071.93
2	1661694.21	1640081.77
3	1661689.00	1639744.67
4	1661887.97	1639741.13
5	1662253.95	1639734.44

- PROPOSED LEGEND**
- 2 LOT NUMBER
 - ◇ PROJECT CONTROL POINT
 - ◇ A-1 SANITARY SEWER MANHOLE IDENTIFIER
 - ◇ PD-1 STORM SEWER STRUCTURE IDENTIFIER (BY SEPARATE PLANS)
 - S — SANITARY SEWER MAIN
 - W — WATER MAIN (BY SEPARATE PLANS)

REV	DATE	DESCRIPTION
1	04/16/24	RFI & CITY COMMENTS
0	03/01/24	BIDDING



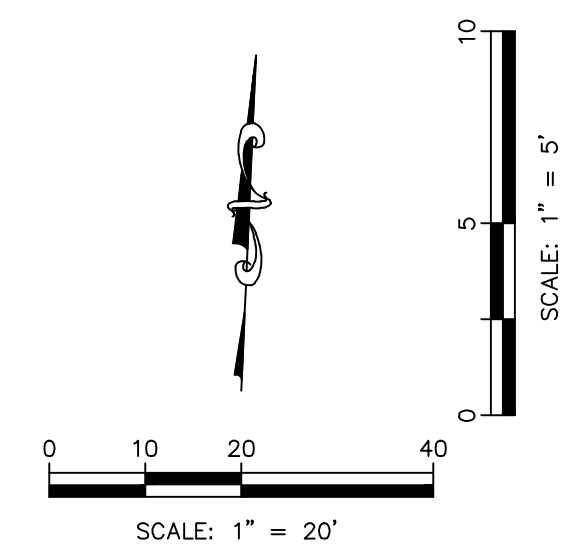
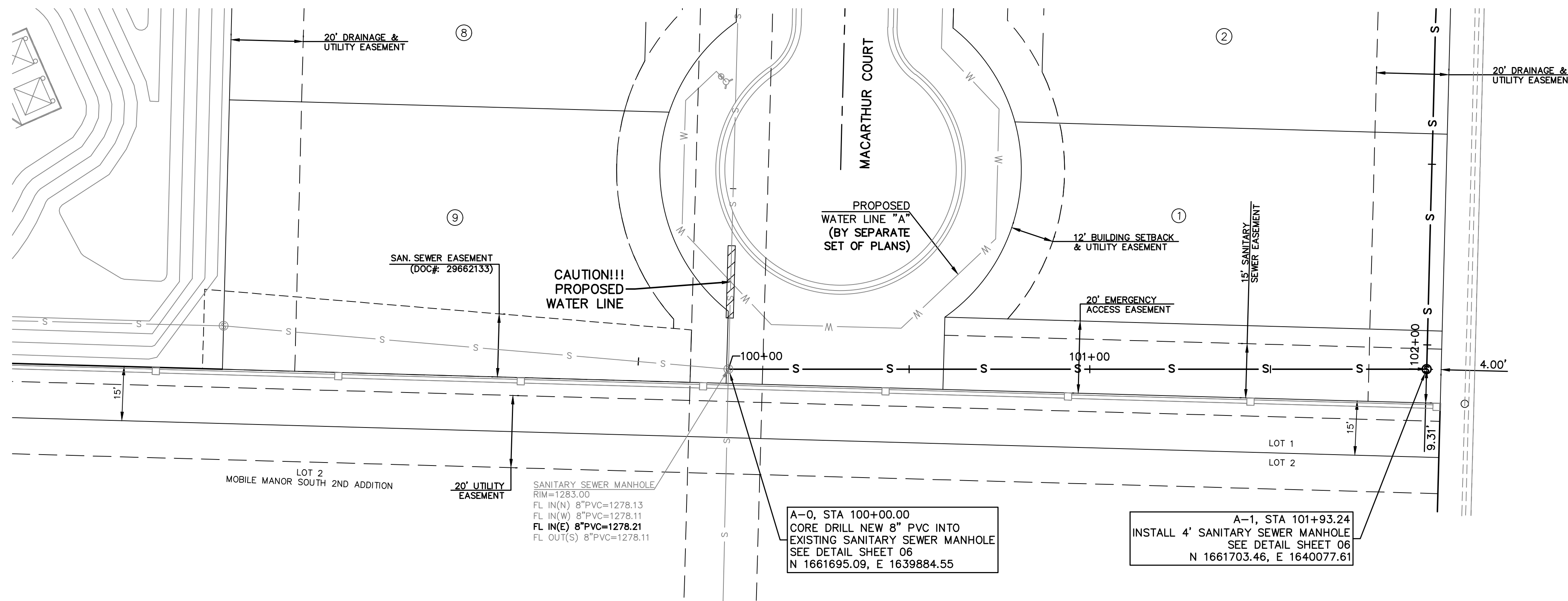
SUNDIATA MARCELIN
ENGINEER
KS # 29546

KAW VALLEY ENGINEERING
KAW VALLEY ENGINEERING, INC. IS AUTHORIZED TO OFFER ENGINEERING SERVICES BY KANSAS STATE CERTIFICATE OF AUTHORIZATION # E-113. EXPIRES 12/31/24

MAC MERIDIAN ADDITION
WEST MACARTHUR ROAD
WICHITA, KANSAS 67217

SANITARY SEWER IMPROVEMENTS
GENERAL LAYOUT SHEET

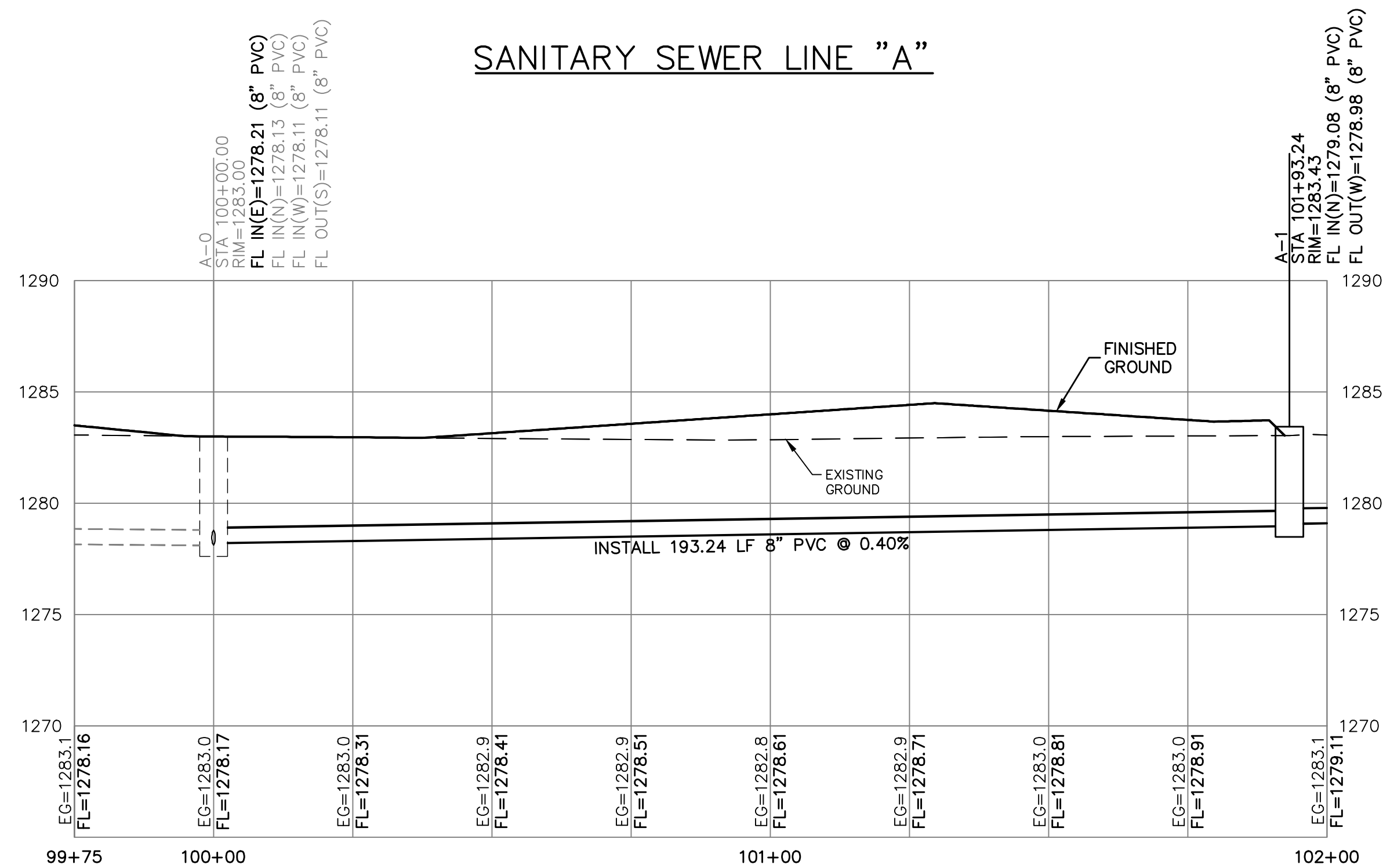
PROJ. NO.	G21D1997
DESIGNER	SMM
DRAWN BY	TDA
CFN	1997S_GLS
SHEET	02
REV	1



SEPARATION OF WATER MAINS AND SANITARY SEWERS:

1. A MINIMUM HORIZONTAL DISTANCE OF 10 FEET SHALL BE MAINTAINED BETWEEN WATER (MAINS AND SERVICE) AND SANITARY SEWER (MAINS AND SERVICE) LINES. AT POINT WHERE SEWERS CROSS WATER MAINS, THE SEWER SHALL BE CONSTRUCTED OF CAST IRON, PLASTIC PIPE WITH NON-JOINTED PLASTIC PIPE, OR PIPE ENCASED IN CONCRETE FOR A DISTANCE OF 10 FEET EACH SIDE OF THE CROSSING AS MEASURED FROM THE OUTSIDE DIAMETER OF THE SEWER LINE (EDGE-TO-EDGE), NOT ITS CENTERLINE, UNLESS THE WATER MAIN IS AT LEAST 2 FEET ABOVE THE SEWER.
2. WHERE A WATER MAIN MUST CROSS A SEWER LINE, MAINTAIN 2 FEET VERTICAL SEPARATION WITH THE WATER MAIN ABOVE THE SEWER.
3. BUILDERS TO MAINTAIN MINIMUM 10' SEPARATION FROM THE OUTSIDE EDGE OF SANITARY SEWER MANHOLES TO THE OUTSIDE EDGE OF WATER SERVICE LINES WHEN RUNNING SERVICE LINES TO HOUSE.
4. ALL SANITARY SEWER SERVICE LINE WILL BE AT A MAX 2% GRADE.
5. ALL NORTHING AND EASTING WAS TAKEN FROM CENTER OF STRUCTURE. REFERENCE DETAIL FOR ACTUAL LID LOCATION.

SANITARY SEWER LINE "A"

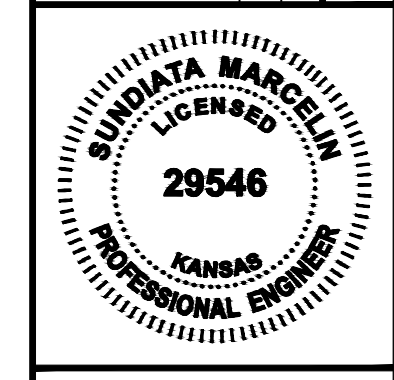


A-0, STA 100+00.00
CORE DRILL NEW 8" PVC INTO
EXISTING SANITARY SEWER MANHOLE
SEE DETAIL SHEET 06
N 1661695.09, E 1639884.55

A-1, STA 101+93.24
INSTALL 4" SANITARY SEWER MANHOLE
SEE DETAIL SHEET 06
N 1661703.46, E 1640077.61

	SMM	SMM	CS	SMM
	SMM	SMM	TDA	SMM
	SMM	SMM	DSN	CHK

REV	DATE	DESCRIPTION
1	04/16/24	RFI & CITY COMMENTS
0	03/01/24	BIDDING



SUNDIATA MARCELIN
ENGINEER
KS # 29546

9139 E. 37TH STREET, NORTH
WICHITA, KANSAS 67226
PH. (316) 440-4304
www.kaveg.com | www.kveig.com

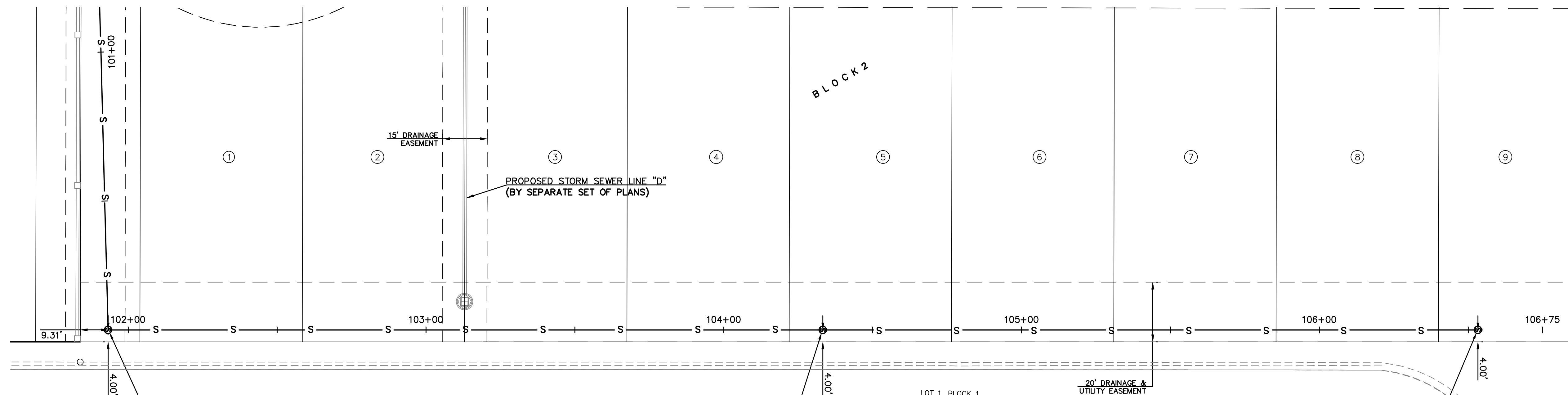
KAW VALLEY ENGINEERING

KAW VALLEY ENGINEERING, INC., IS AUTHORIZED TO OFFER ENGINEERING SERVICES BY KANSAS STATE CERTIFICATE OF AUTHORIZATION # E-113. EXPIRES 12/31/24

MAC MERIDIAN ADDITION
WEST MACARTHUR ROAD
WICHITA, KANSAS 67217

SANITARY SEWER IMPROVEMENTS
SANITARY SEWER LINE "A" - PLAN & PROFILE

PROJ. NO.	G21D1997
DESIGNER	SMM
DRAWN BY	TDA
CFN	1997PPS
SHEET	03
REV	1



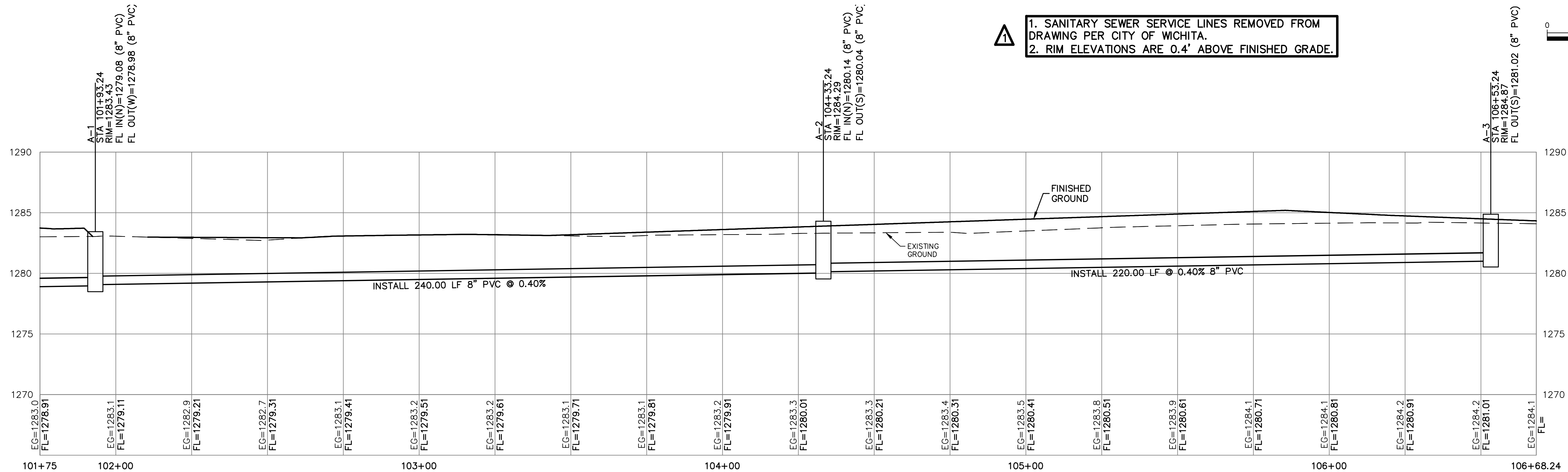
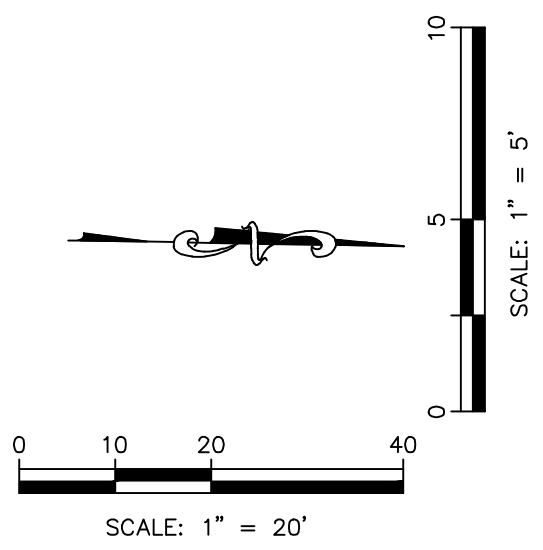
A-1, STA 101+93.24
INSTALL 4' SANITARY SEWER MANHOLE
SEE DETAIL SHEET 06
N 1661703.46, E 1640077.61

A-2, STA 104+33.24
INSTALL 4' SANITARY SEWER MANHOLE
SEE DETAIL SHEET 06
N 1661943.43, E 1640073.43

A-3, STA 106+53.24
INSTALL 4' SANITARY SEWER MANHOLE
SEE DETAIL SHEET 06
N 1662163.39, E 1640069.59

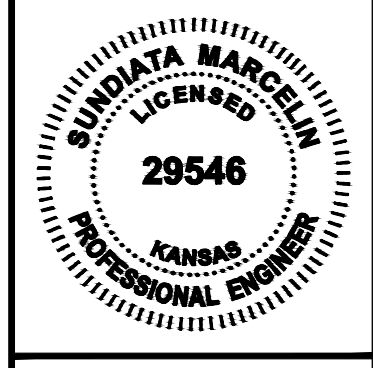
SANITARY SEWER LINE "A"

1. SANITARY SEWER SERVICE LINES REMOVED FROM DRAWING PER CITY OF WICHITA.
2. RIM ELEVATIONS ARE 0.4' ABOVE FINISHED GRADE.



- SEPARATION OF WATER MAINS AND SANITARY SEWERS:**
- A MINIMUM HORIZONTAL DISTANCE OF 10 FEET SHALL BE MAINTAINED BETWEEN WATER (MAINS AND SERVICE) AND SANITARY SEWER (MAINS AND SERVICE) LINES. AT POINT WHERE SEWERS CROSS WATER MAINS, THE SEWER SHALL BE CONSTRUCTED OF CAST IRON, PLASTIC PIPE WITH NON-JOINTED PLASTIC PIPE, OR PIPE ENCASED IN CONCRETE FOR A DISTANCE OF 10 FEET EACH SIDE OF THE CROSSING AS MEASURED FROM THE OUTSIDE DIAMETER OF THE SEWER LINE (EDGE-TO-EDGE), NOT ITS CENTERLINE, UNLESS THE WATER MAIN IS AT LEAST 2 FEET ABOVE THE SEWER.
 - WHERE A WATER MAIN MUST CROSS A SEWER LINE, MAINTAIN 2 FEET VERTICAL SEPARATION WITH THE WATER MAIN ABOVE THE SEWER.
 - BUILDERS TO MAINTAIN MINIMUM 10' SEPARATION FROM THE OUTSIDE EDGE OF SANITARY SEWER MANHOLES TO THE OUTSIDE EDGE OF WATER SERVICE LINES WHEN RUNNING SERVICE LINES TO HOUSE.
 - ALL SANITARY SEWER SERVICE LINE WILL BE AT A MAX 2% GRADE.
 - ALL NORTHING AND EASTING WAS TAKEN FROM CENTER OF STRUCTURE. REFERENCE DETAIL FOR ACTUAL LID LOCATION.

REV	DATE	DESCRIPTION
1	04/16/24	RFI & CITY COMMENTS
0	03/01/24	BIDDING



SUNDIATA MARCELIN
ENGINEER
KS # 29546

9139 E. 37TH STREET, NORTH
WICHITA, KANSAS 67226
PH. (316) 440-4304
www.kveeng.com | www.kveing.com

KAW VALLEY ENGINEERING

KAW VALLEY ENGINEERING, INC., IS AUTHORIZED TO OFFER ENGINEERING SERVICES BY KANSAS STATE CERTIFICATE OF AUTHORIZATION # E-113. EXPIRES 12/31/24

MAC MERIDIAN ADDITION	
WEST MACARTHUR ROAD	
WICHITA, KANSAS 67217	
SANITARY SEWER IMPROVEMENTS	
SANITARY SEWER LINE "A" - PLAN & PROFILE	
PROJ. NO.	G21D1997
DESIGNER	SMM
DRAWN BY	TDA
CFN	1997PPS
SHEET	04
REV	1

1	04/16/24	RFI & CITY COMMENTS	SMM	CS	SMM
0	03/01/24	BIDDING	SMM	TDA	SMM
		REV DATE			DSN
		DESCRIPTION			CHK



SUNDIATA MARCELIN
ENGINEER
KS # 29546

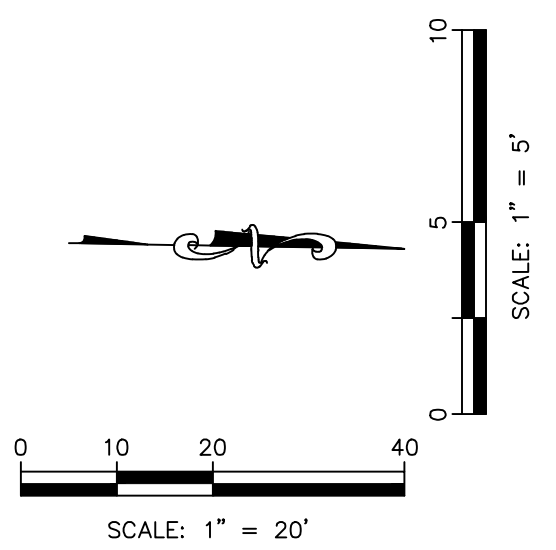
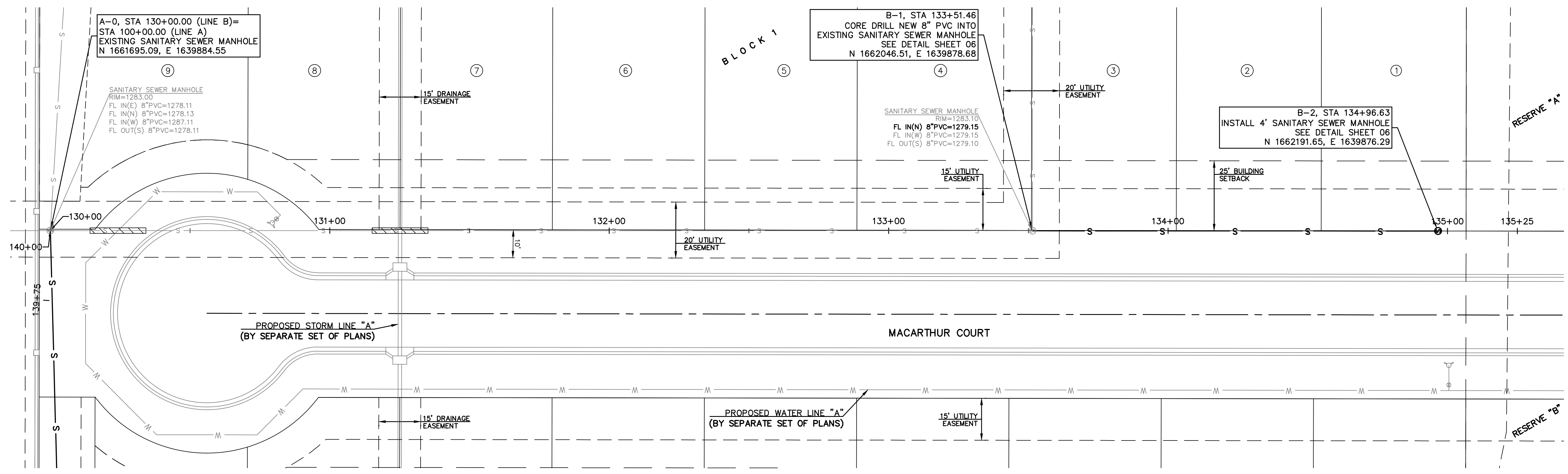
KAW VALLEY ENGINEERING
KAW VALLEY ENGINEERING, INC. IS AUTHORIZED TO OFFER ENGINEERING SERVICES BY KANSAS STATE CERTIFICATE OF AUTHORIZATION # E-113. EXPIRES 12/31/24

9139 E. 37TH STREET, NORTH
WICHITA, KANSAS 67226
PH. (316) 440-4304
www.kveeng.com | www.kveing.com

MAC MERIDIAN ADDITION
WEST MACARTHUR ROAD
WICHITA, KANSAS 67217

SANITARY SEWER IMPROVEMENTS
SANITARY SEWER LINE "B" - PLAN & PROFILE

PROJ. NO. G21D1997
DESIGNER SMM DRAWN BY TDA
CFN 1997PPS
SHEET 05 REV 1



- 1. SANITARY SEWER SERVICE LINES REMOVED FROM DRAWING PER CITY OF WICHITA.**
2. RIM ELEVATIONS ARE 0.4' ABOVE FINISHED GRADE.

SANITARY SEWER LINE "B"

- SEPARATION OF WATER MAINS AND SANITARY SEWERS:**
- A MINIMUM HORIZONTAL DISTANCE OF 10 FEET SHALL BE MAINTAINED BETWEEN WATER (MAINS AND SERVICE) AND SANITARY SEWER (MAINS AND SERVICE) LINES. AT POINT WHERE SEWERS CROSS WATER MAINS, THE SEWER SHALL BE CONSTRUCTED OF CAST IRON, PLASTIC PIPE WITH NON-JOINTED PLASTIC PIPE, OR PIPE ENCASED IN CONCRETE FOR A DISTANCE OF 10 FEET EACH SIDE OF THE CROSSING AS MEASURED FROM THE OUTSIDE DIAMETER OF THE SEWER LINE (EDGE-TO-EDGE), NOT ITS CENTERLINE, UNLESS THE WATER MAIN IS AT LEAST 2 FEET ABOVE THE SEWER.
 - WHERE A WATER MAIN MUST CROSS A SEWER LINE, MAINTAIN 2 FEET VERTICAL SEPARATION WITH THE WATER MAIN ABOVE THE SEWER.
 - BUILDERS TO MAINTAIN MINIMUM 10' SEPARATION FROM THE OUTSIDE EDGE OF SANITARY SEWER MANHOLES TO THE OUTSIDE EDGE OF WATER SERVICE LINES WHEN RUNNING SERVICE LINES TO HOUSE.
 - ALL SANITARY SEWER SERVICE LINE WILL BE AT A MAX 2% GRADE.
 - ALL NORTHING AND EASTING WAS TAKEN FROM CENTER OF STRUCTURE. REFERENCE DETAIL FOR ACTUAL LID LOCATION.

