

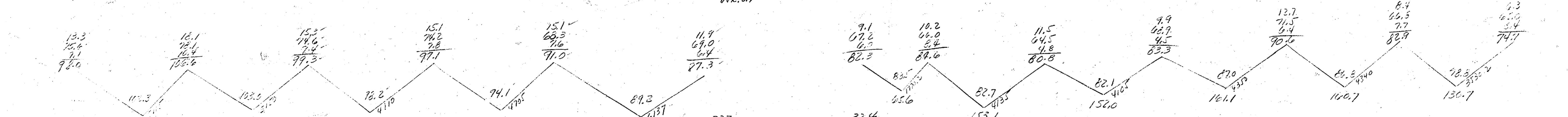
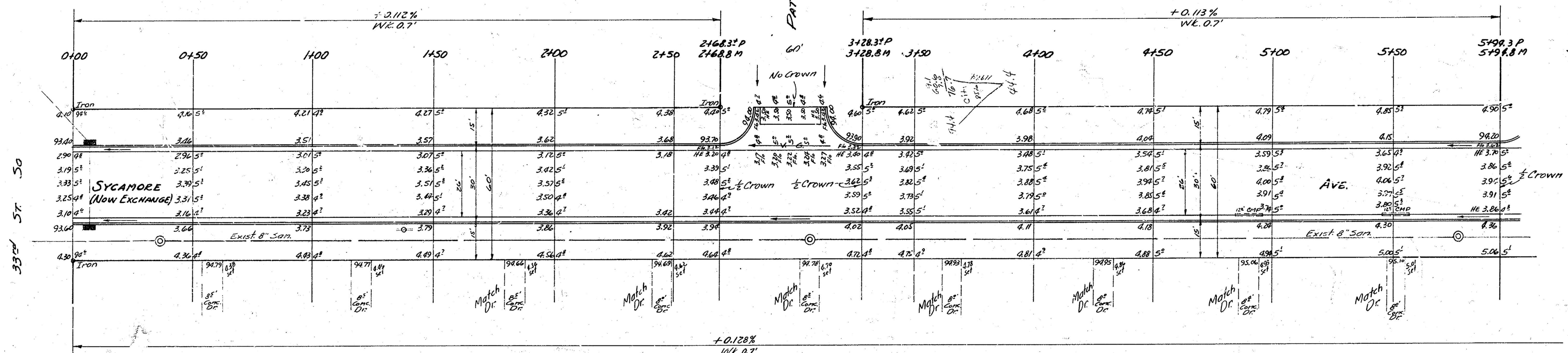
B.M. 96.45 S.W. Cor. Conc. Patch Ho. # 3332 So. Sycamore

Station & i Meas. are from E



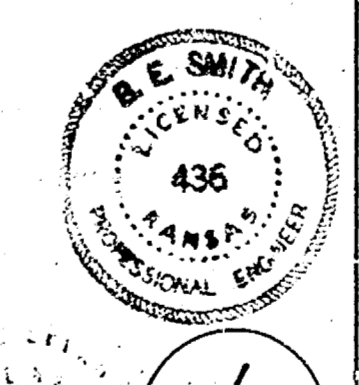
Grand Total Excav.

Prop.		City	
1773.0	133.5	133.5	
1773.7	227.3	227.3	
3497.4	3497.8	3497.8	
1179	3472.6	1179	3472.6
7661	3874.5	7661	3874.5
			122.5 Cu. yds.

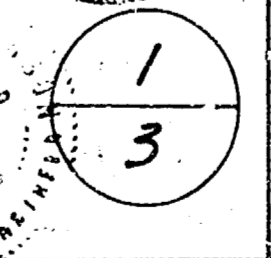


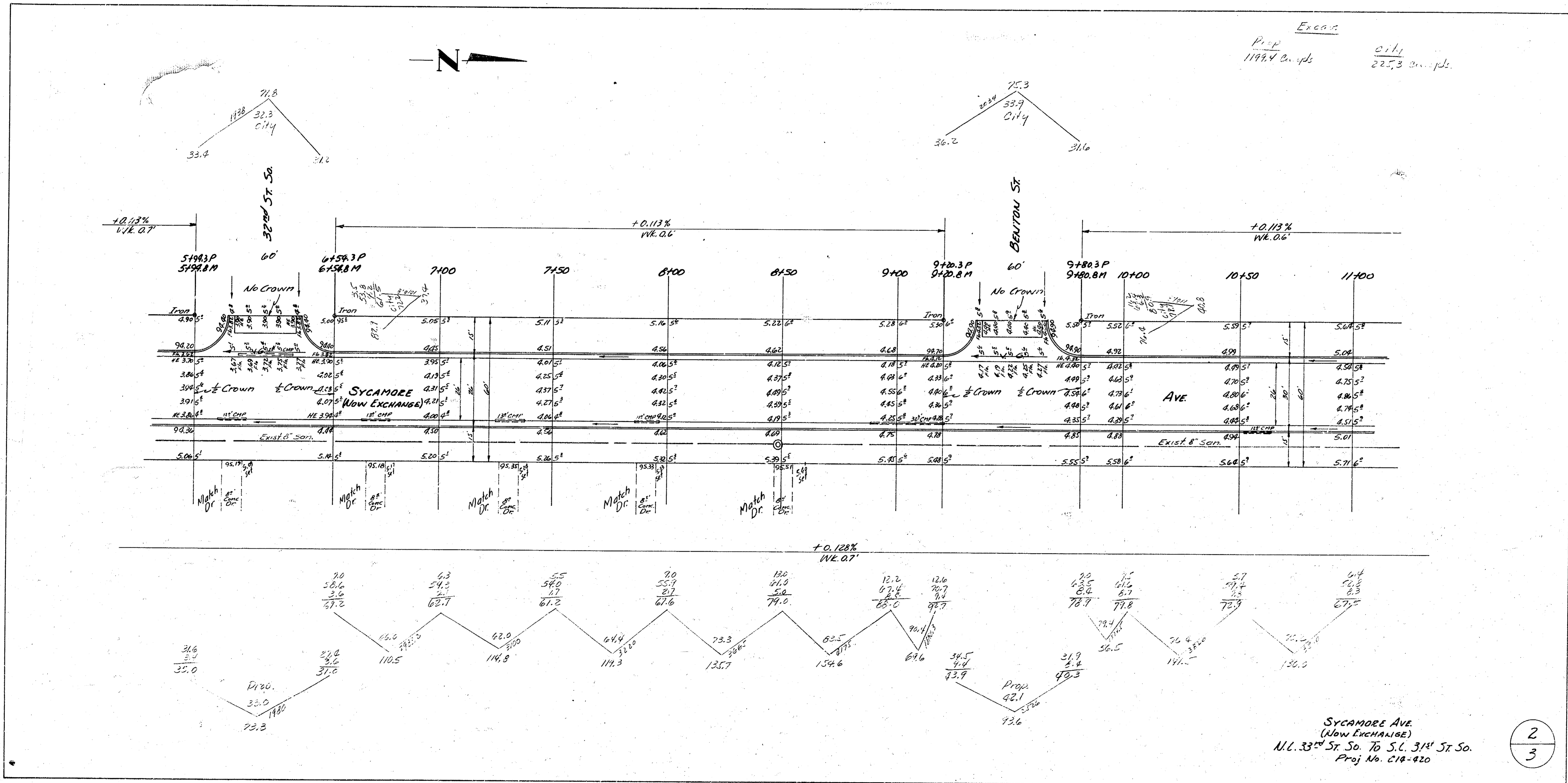
NOTE: All entrance pipes will be disposed of in accordance with city dirt checker.

NOTE: AVOID SEWER DITCH IN DRIVEWAYS IF THERE IS DANGER OF SETTLEMENT. USE EXTRA STEEL IN DRIVES.



EXCHANGE AVE.  
 (Now Exchange Ave.)  
 ALL 33<sup>rd</sup> ST. So. TO 56. 31<sup>st</sup> ST. So.  
 26' 2' 30" A.C.  
 CITY OF WICHITA, KANSAS  
 B.E. SMITH CITY ENGINEER  
 SEPT, 1956 Proj. No. 18-420





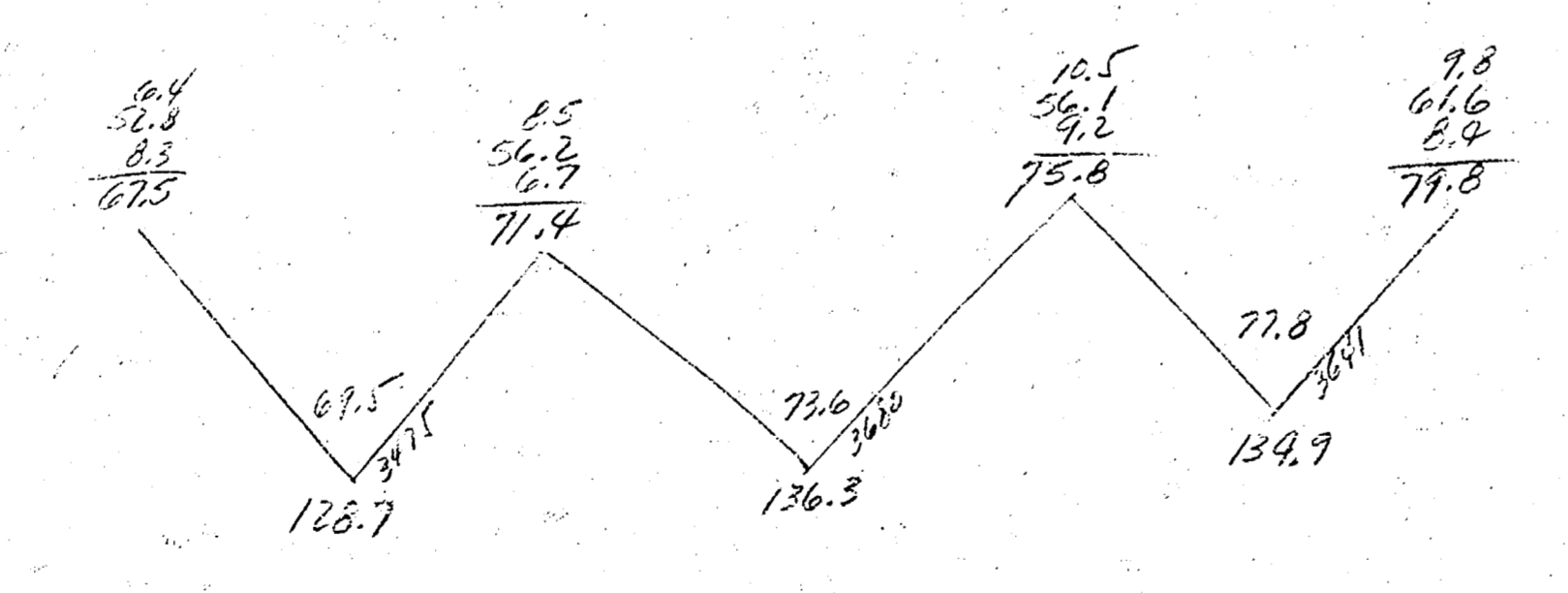
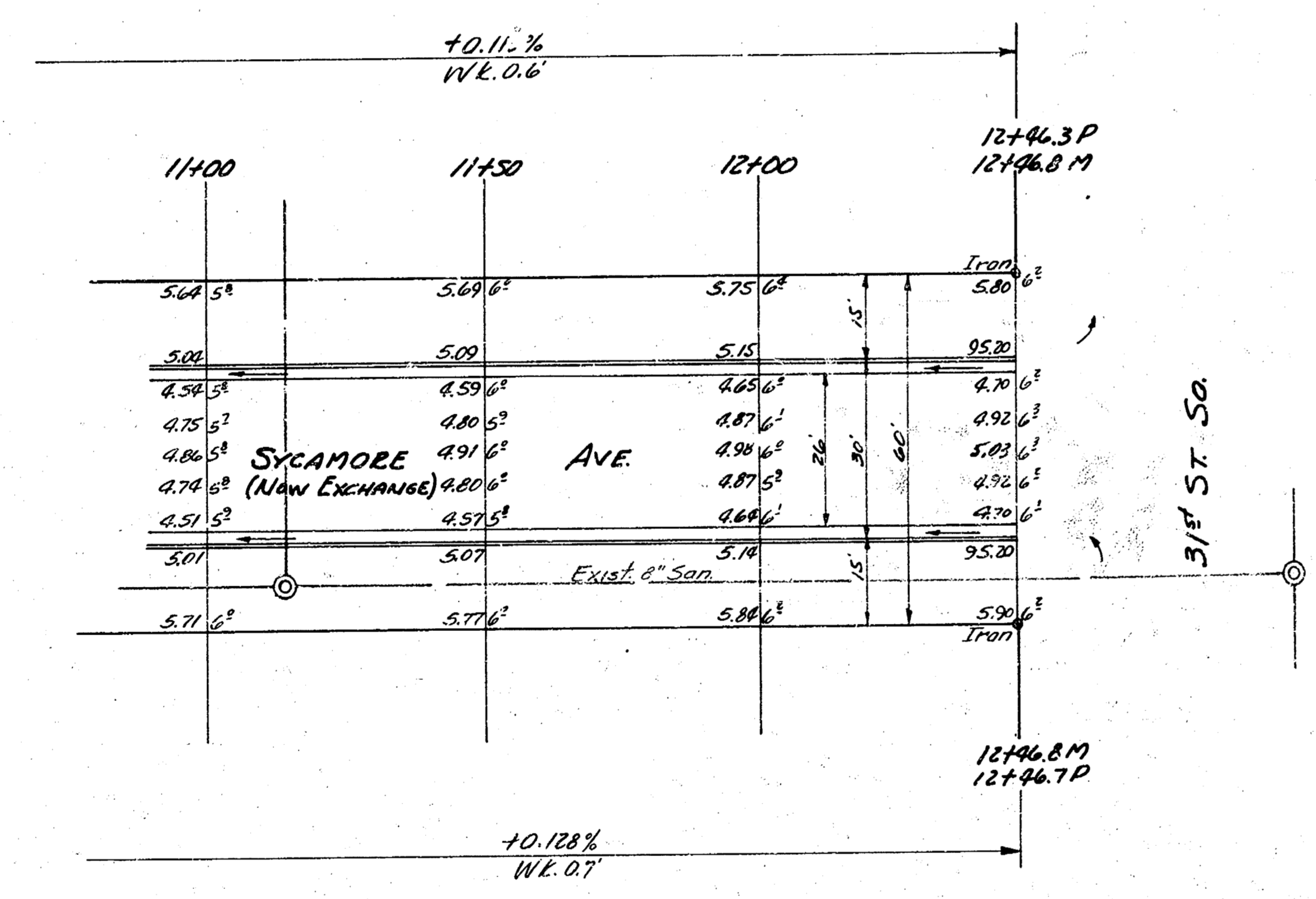
Excav.  
Prop  
1198.4 cu. yds  
City  
22.3 cu. yds.

SYCAMORE AVE.  
(Now EXCHANGE)  
N.L. 33rd St. So. To S.C. 31st St. So.  
Proj. No. C18-920

2  
3



Excav  
Prop 377.9 cu. yds City  
0



SYCAMORE AVE.  
(NEW EXCHANGE)  
N.L. 33<sup>rd</sup> ST. So. TO S.L. 31<sup>st</sup> ST. So.  
Proj. No. C14-410

3  
3