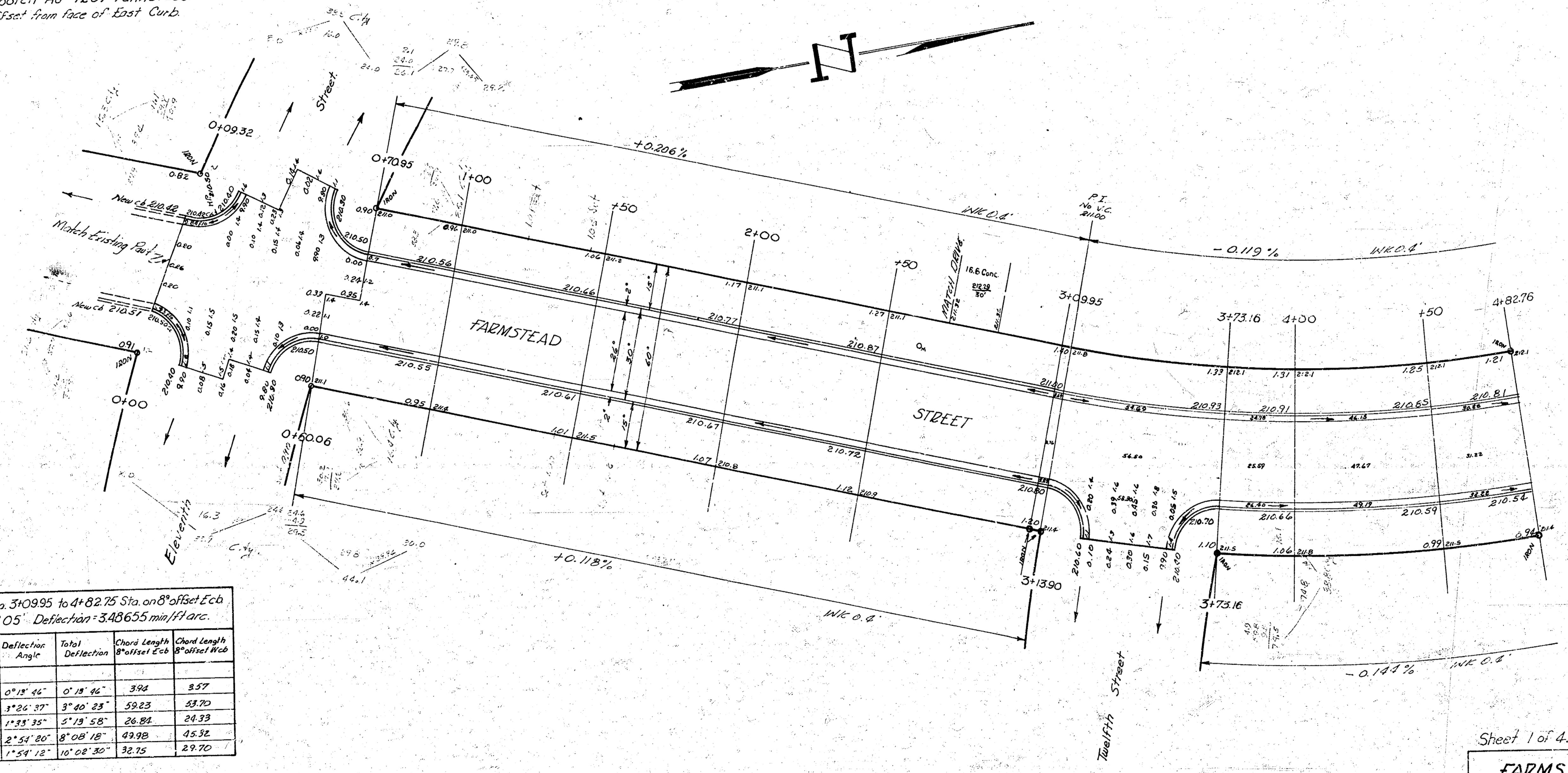


BM: 212: NE cor conc porch Ho^m 1207 Farmstead.
 Base line & Stationing on 8' offset from face of East Curb.



CURVE DATA: Sta. 3+09.95 to 4+82.75 Sta. on 8' offset Ecb
 R=493.0 Δ=20°05' Deflection=3.48655 m/100 arc.

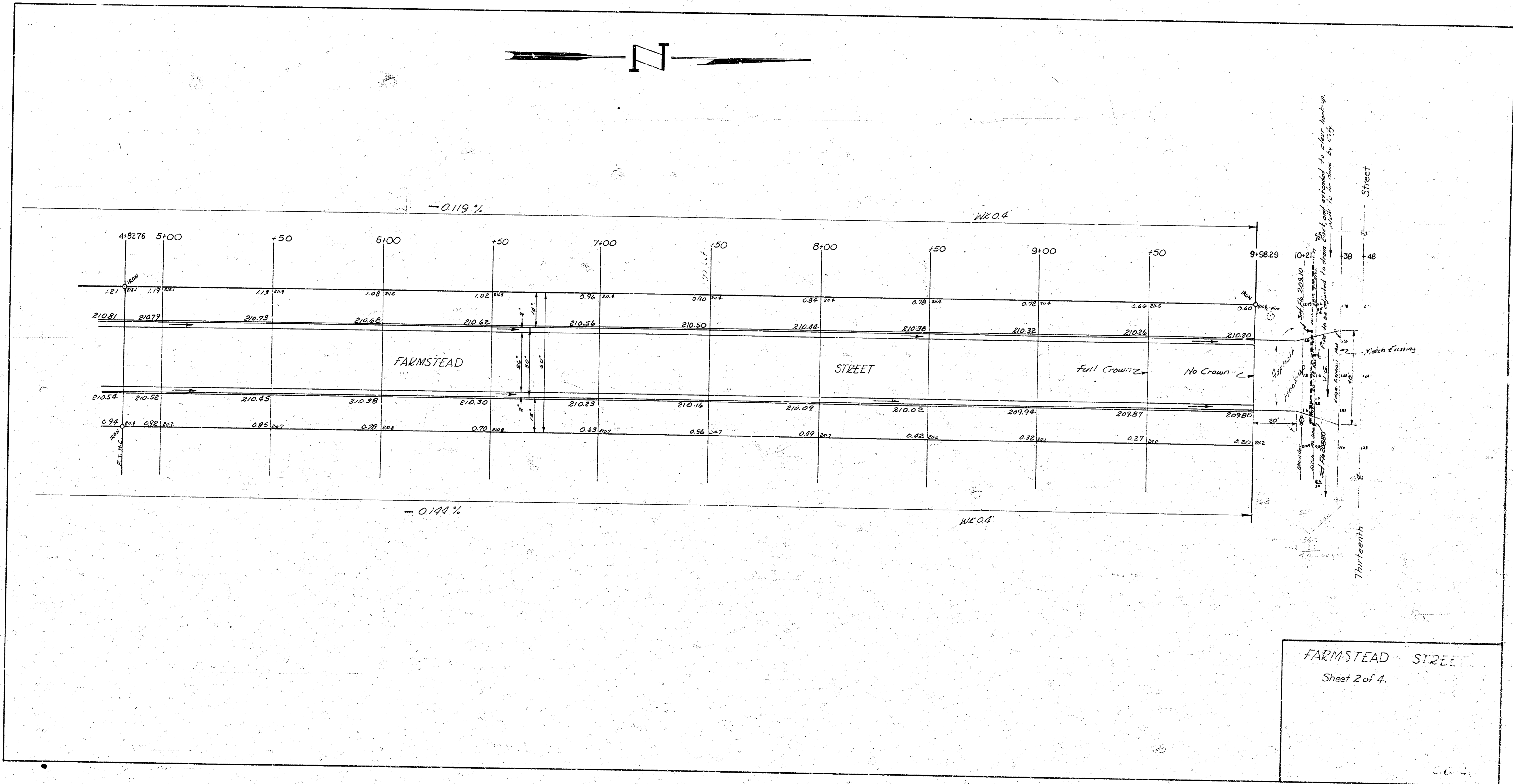
STATION	Arc Length	Deflection Angle	Total Deflection	Chord Length	Chord Length
				Offset Ecb	Offset Wcb
3+09.95					
1+3.90	3.95	0°18'46"	0°18'46"	3.94	3.97
178.16	59.66	1°26'37"	3°45'23"	59.23	59.70
110.0	26.84	1°35'35"	5°19'58"	26.82	26.93
1.50	50'	2°54'20"	8°08'18"	49.98	49.92
192.75	52.75	1°54'12"	10°05'30"	52.75	52.70

Surveyed by: G. L. Gandy
 Plan Checked: G. L. Gandy
 City Engineer: B. E. Smith
 Checked: J. J.

Sheet 1 of 4.

FARMSTEAD STREET
 S L Eleventh St to S L Thirteenth St
 26-2-30 AC
 CITY OF WICHITA, KANSAS
 B. E. SMITH CITY ENGINEER
 PROJ. NO C16-141





FARMSTEAD STREET
Sheet 2 of 4.

06 2