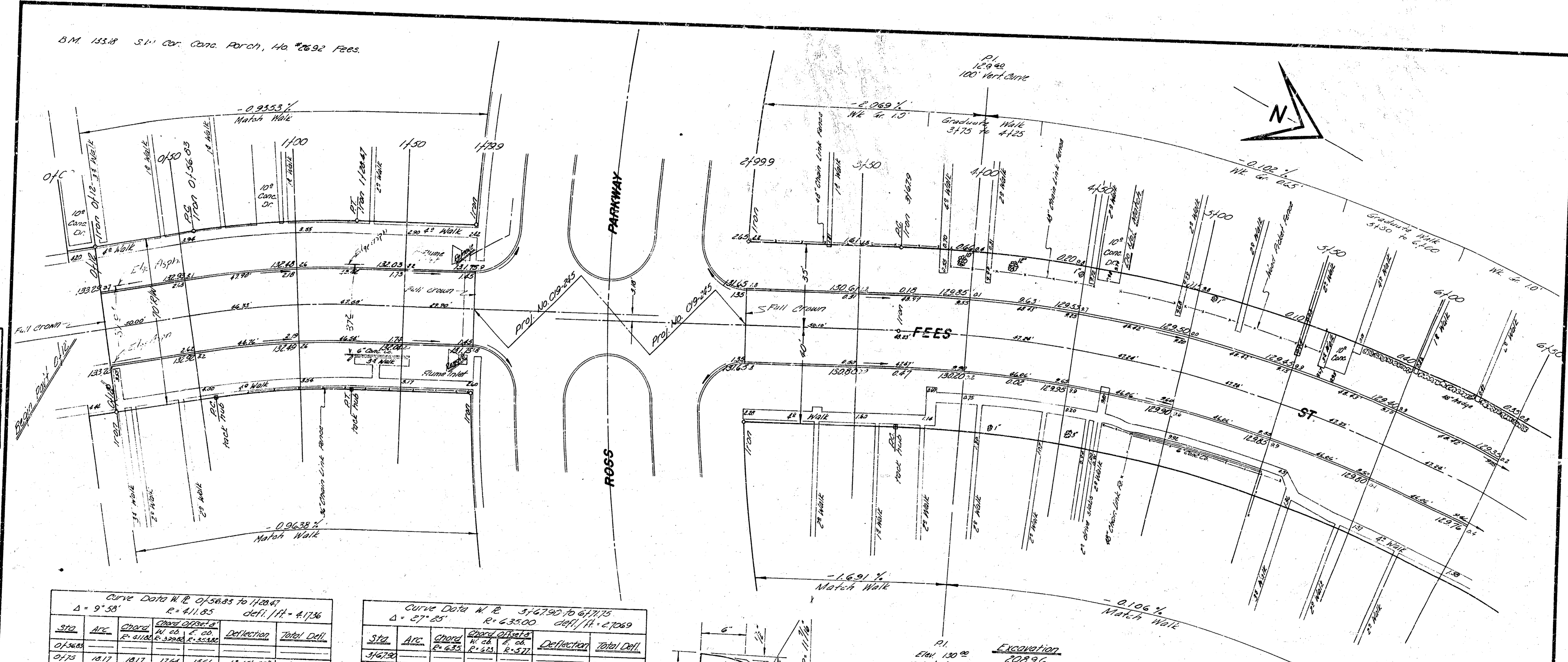


B.M. 153.8 S.V. Cor. Conc. Paved, Ho #2692 Fees.

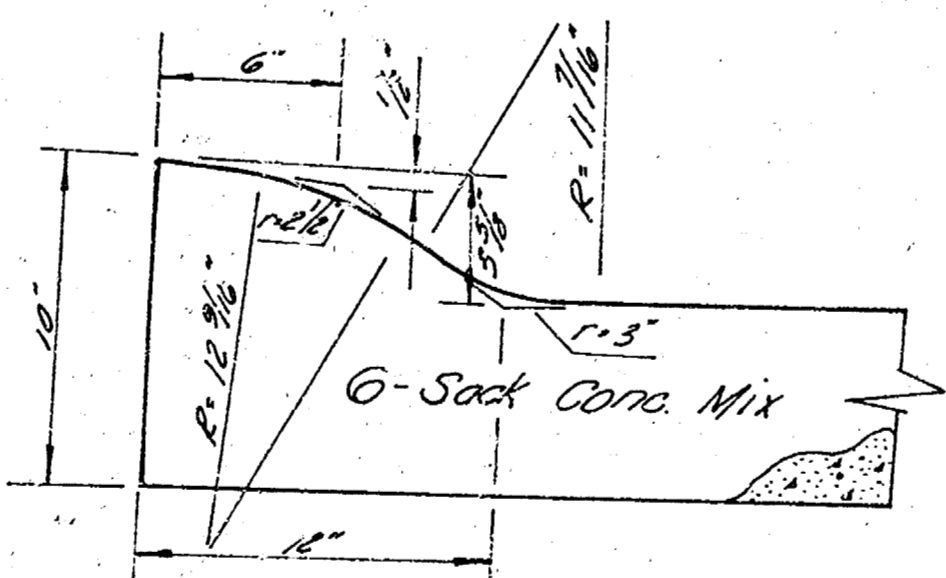


Curve Data N.R. of 5683 to 11244
 $\Delta = 9^{\circ} 53'$ $R = 411.85$ $defl. / 11 = 4.1736$

Sta.	Ave.	Chord	Chord	Deflection	Total Defl.
		N. 20° E. 20'	S. 20° W. 20'		
0+5683					
0+775	18.17	18.17	18.17	1° 15' 30"	1° 15' 30"
1+100	25.00	25.00	24.67	1° 44' 21"	3° 00' 11"
1+2884	28.47	28.46	27.63	1° 51' 49"	4° 59' 00"

Curve Data N.R. of 56790 to 61775
 $\Delta = 27^{\circ} 25'$ $R = 635.00$ $defl. / 11 = 2.7269$

Sta.	Ave.	Chord	Chord	Deflection	Total Defl.
		N. 26° E. 26'	S. 26° W. 26'		
5+6790					
6+000	32.10	32.09	31.49	1° 26' 33"	1° 26' 33"
6+300	50.00	49.99	48.05	2° 15' 21"	3° 42' 16"
6+600	-	-	-	-	5° 57' 35"
6+900	-	-	-	-	8° 12' 36"
7+200	50.00	49.99	48.05	2° 15' 21"	10° 28' 17"
7+525	21.75	21.74	21.33	0° 38' 52"	11° 07' 30"

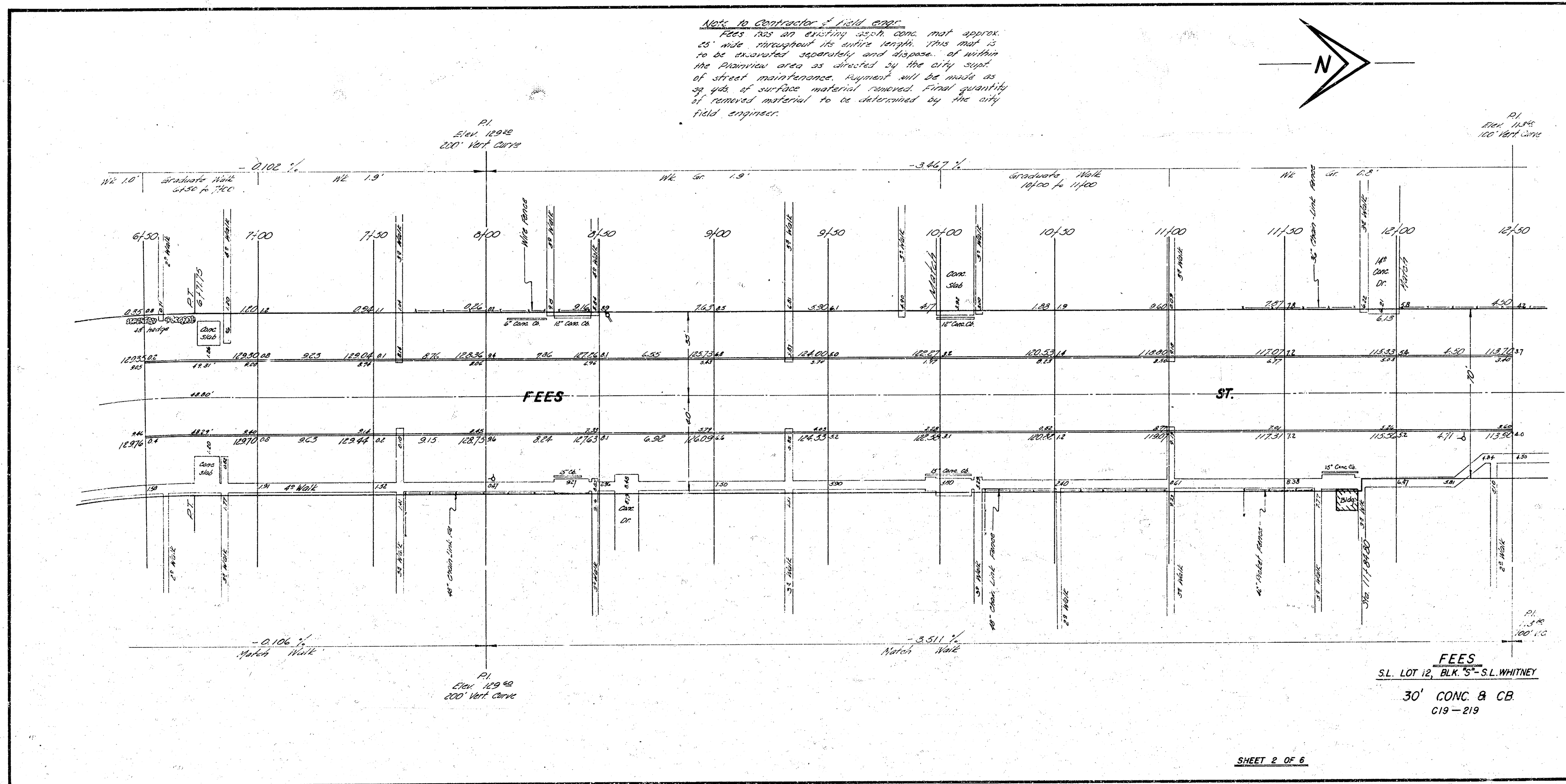


Excavation
 20896
 2090
 22936 cu. yd.



FEES
 S.L. LOT 12, BLK 5-SL. WHITNEY
 30' CONC. & CB.
 CITY OF WICHITA
 B.E. SMITH CITY ENGINEER
 DATE: May 1961 PROJ. NO. 419-219

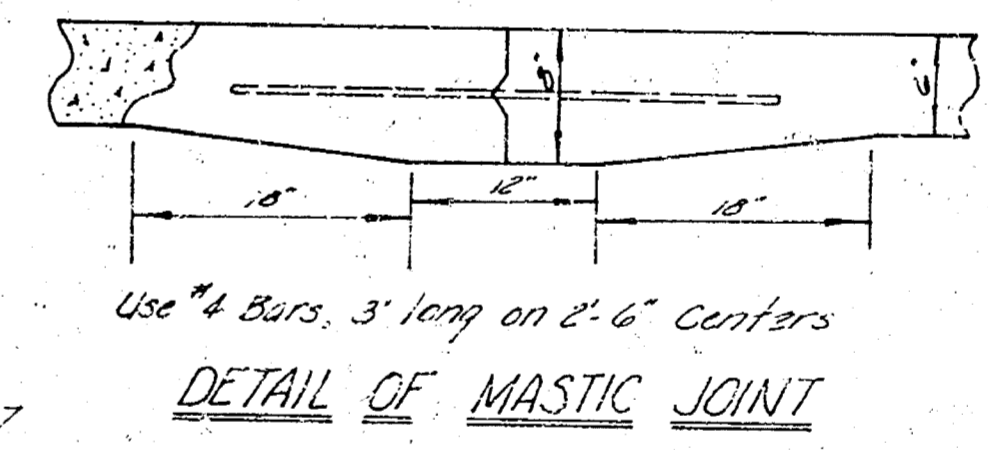
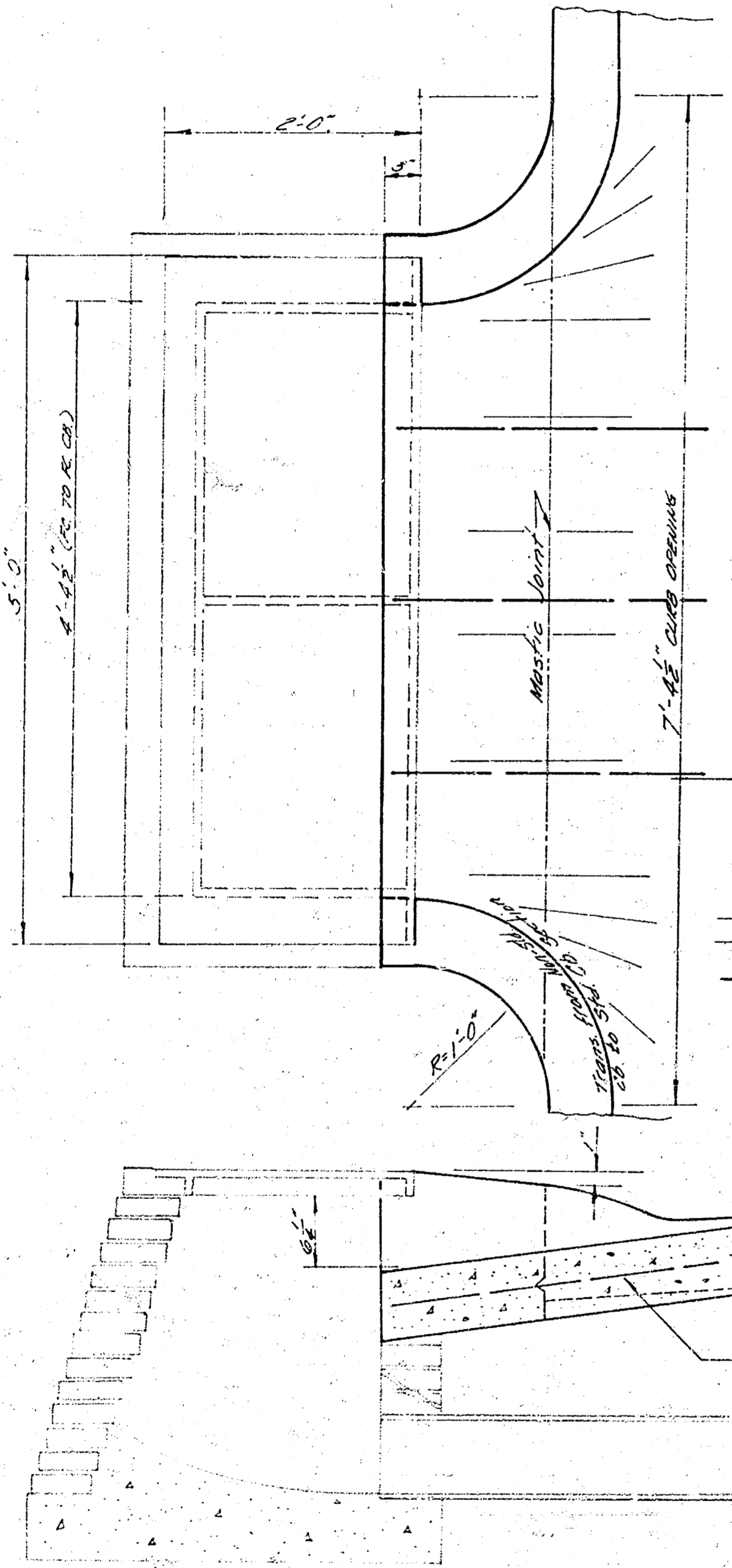
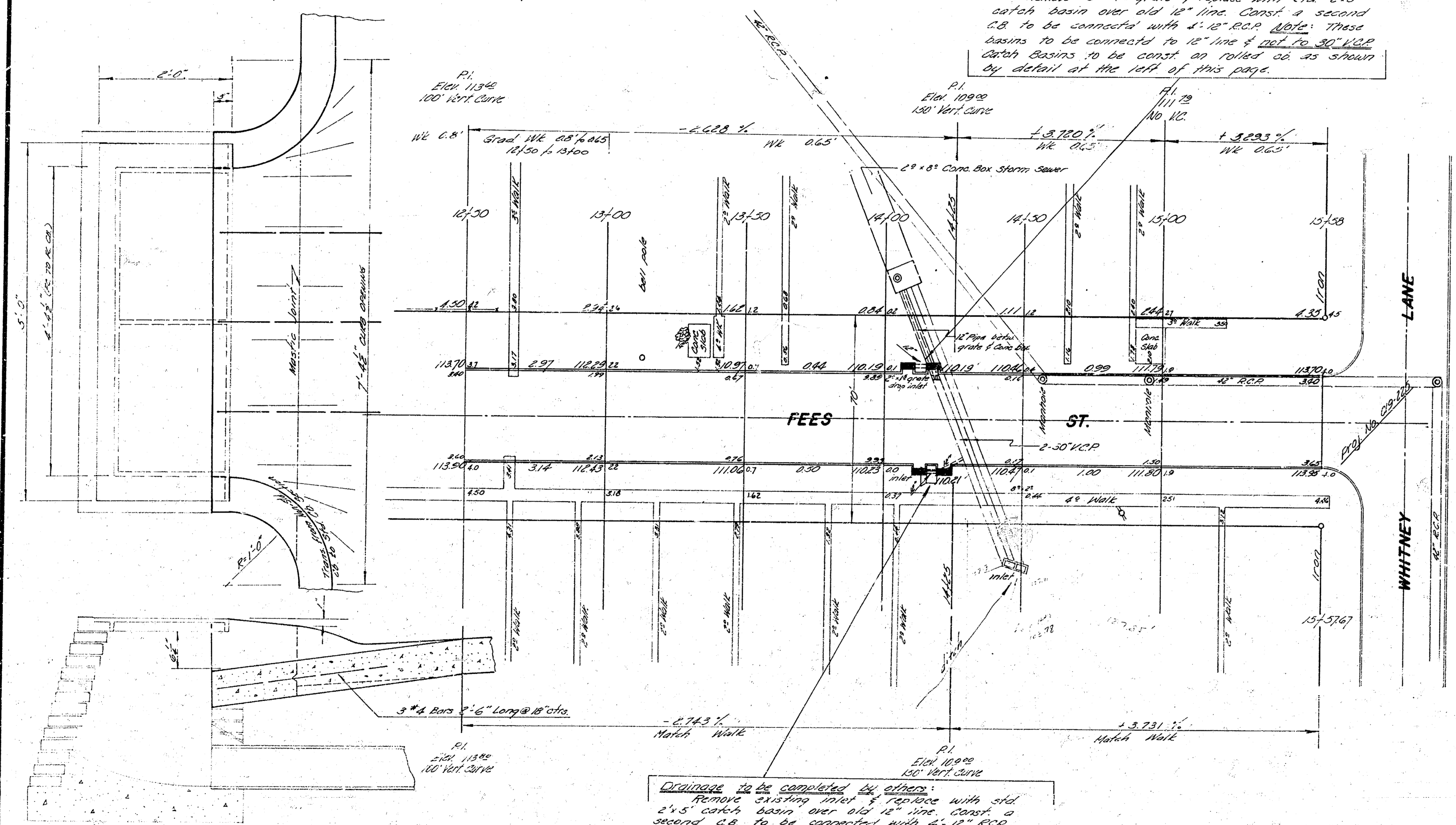
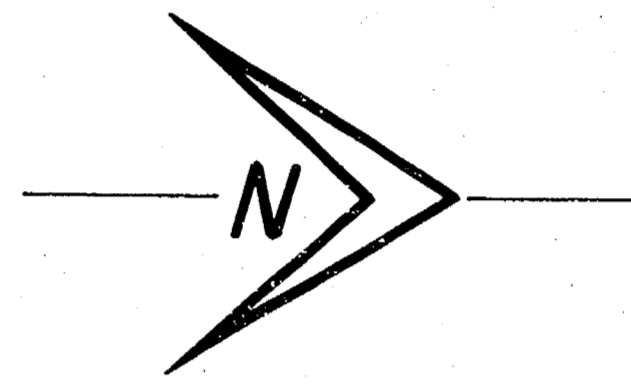
Note to Contractor & Field Eng.
 FEES has an existing 24" conc. mat approx. 25' wide throughout its entire length. This mat is to be excavated separately and disposed of within the Plannview area as directed by the city supt. of street maintenance. Payment will be made as sq. yds. of surface material removed. Final quantity of removed material to be determined by the city field engineer.



FEES
 S.L. LOT 12, BLK. 5 - S.L. WHITNEY
 30' CONC. & CB
 C19-219

B.M. 116.27 S.E. Cor. Conc. Curb east side No. 1391 Whitney Lane.

Drainage to be completed by others:
 Remove 2" x 12" grate & replace with 2' x 5' catch basin over old 12" line. Const. a second C.B. to be connected with 4" x 12" R.C.P. Note: These basins to be connected to 12" line & 30" V.C.P. catch basins to be const. on rolled curb as shown by detail at the left of this page.



Drainage to be completed by others:
 Remove existing grate & replace with 2' x 5' catch basin over old 12" line. Const. a second C.B. to be connected with 4" x 12" R.C.P. catch basins to be constructed on rolled curb as shown by detail at the left of this page.

FEES
 S.L. LOT 12, BLK. "S"-S.L. WHITNEY
 30' CONC. & CB.
 019-219