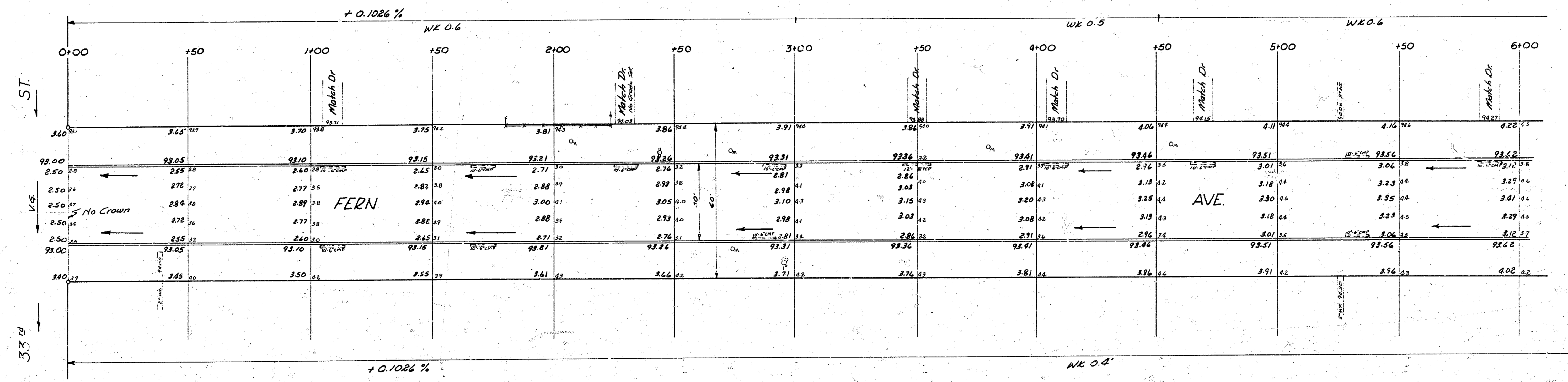
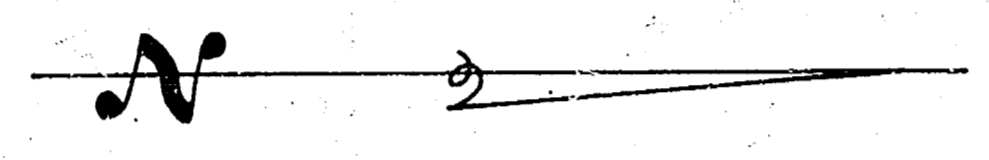


BM: 94.58 SW cor. conc. porch Ho. 3344 S. Fern.



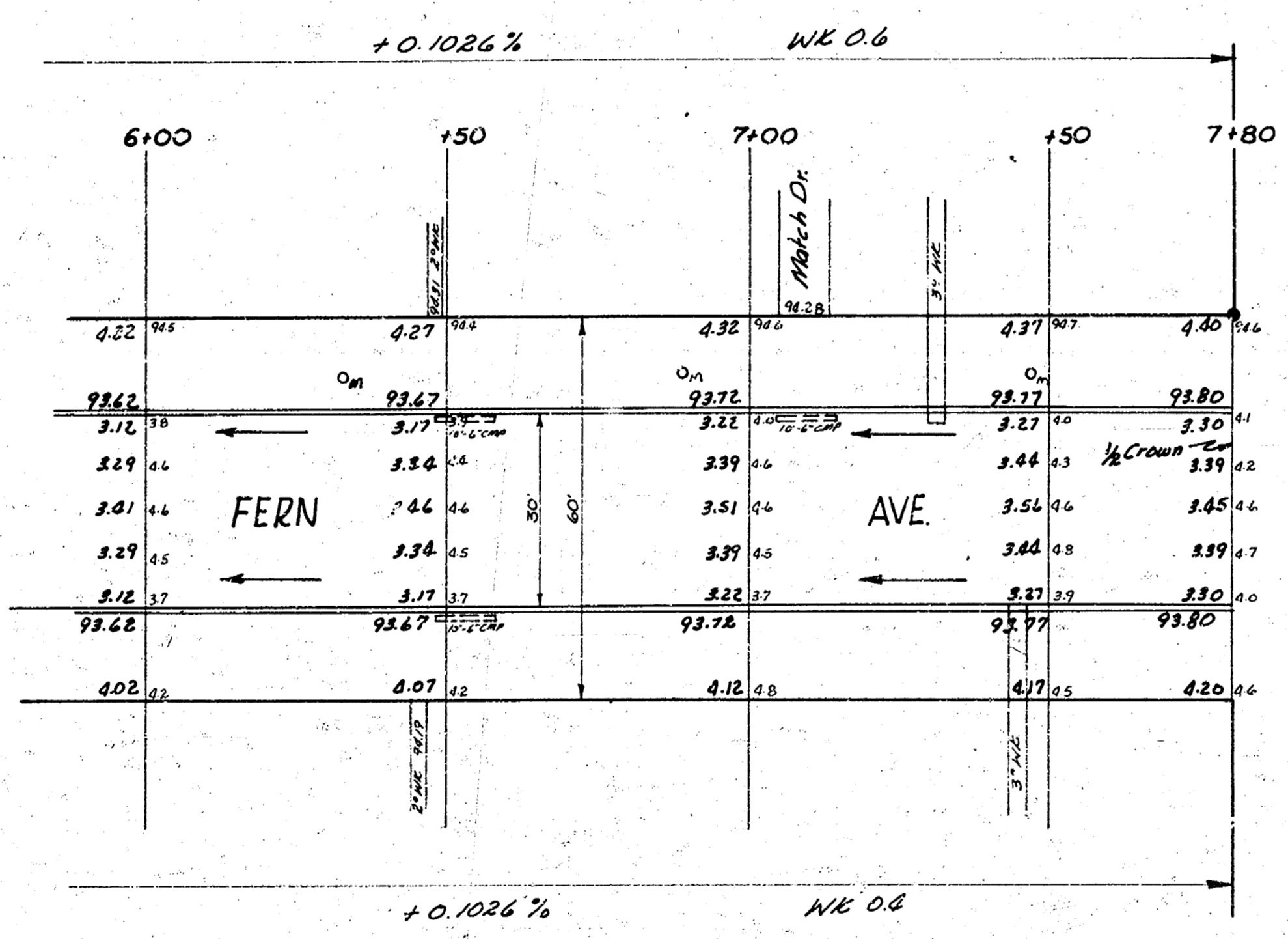
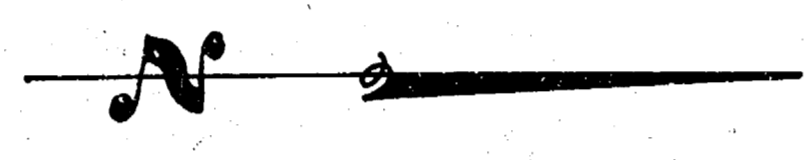
Surveyed by: B.M. 1087
 Plan: 1087
 E.C. 1087
 L. 1087

NOTICE TO CONTRACTOR:
 All entrance pipes are to be disposed of in accordance with instructions of City Dirt Checker.

Sheet 1 of 2.



FERN AVE
 NL 33rd St to SL Gibson St
 30' Conc. # Cb
 CITY OF WICHITA, KANSAS
 B.E. SMITH CITY ENGINEER
 MAY 1956 PROJ NO. C16-65



FERN AVE - C16-65
Sheet 2 of 2