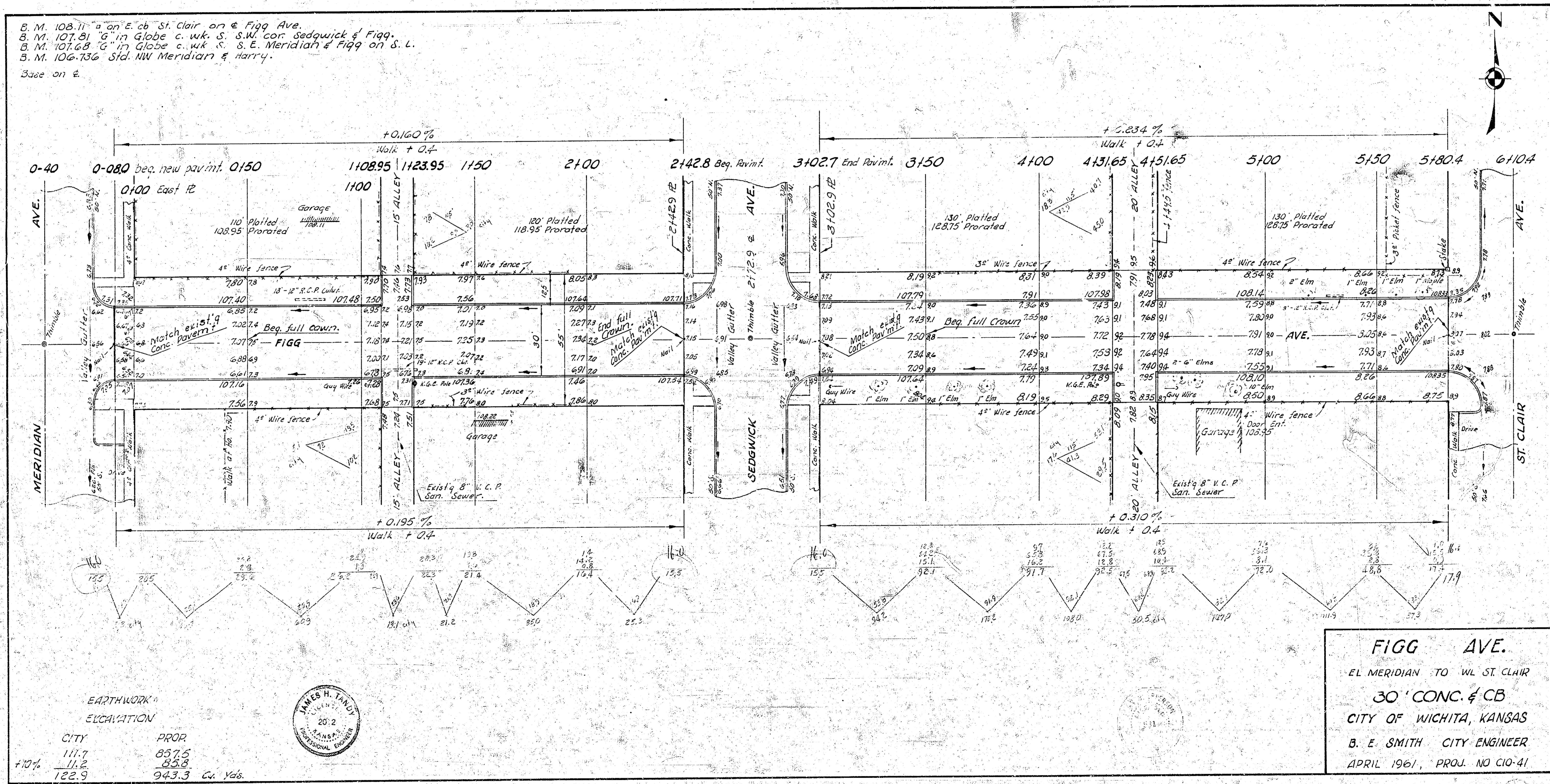


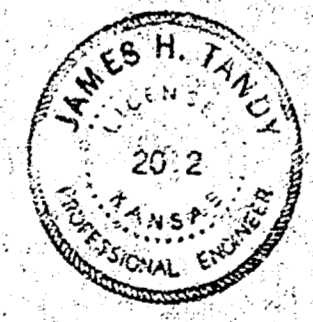
B. M. 108.11 "a" on E. of St. Clair on E. Figg Ave.  
 B. M. 107.81 "G" in Globe c. wk. S. W. cor. Sedgwick & Figg.  
 B. M. 107.68 "G" in Globe c. wk. S. E. Meridian & Figg on S. L.  
 B. M. 106.136 Std. NW Meridian & Harry.  
 See on E.



EARTHWORK  
 EXCAVATION

| CITY       | PROP. |
|------------|-------|
| 111.7      | 857.5 |
| +10% 111.2 | 858.8 |
| 122.9      | 943.3 |

Ca. Yds.



**FIGG AVE.**  
 EL MERIDIAN TO WL ST. CLAIR  
 30' CONC. & CB  
 CITY OF WICHITA, KANSAS  
 B. E. SMITH CITY ENGINEER  
 APRIL 1961, PROJ. NO C10-41

10 10 5