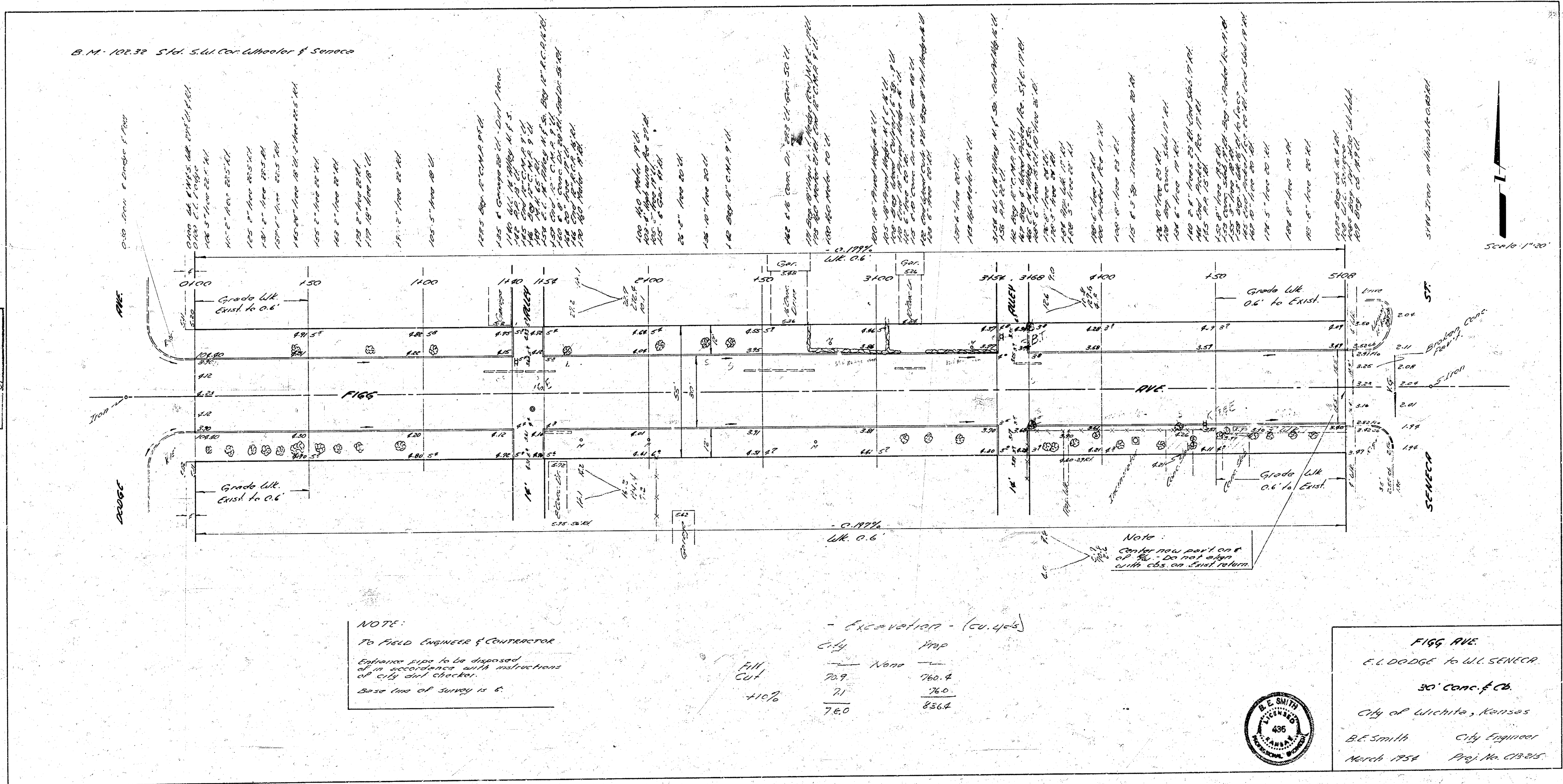


B.M. 102.32 S. 1/4 Cor. Wheeler & Seneca



Survey Approved By
 City Engineer
 Checked By

NOTE:
 To Field Engineer & Contractor
 Excess pipe to be disposed
 of in accordance with instructions
 of city and engineer.
 Base line of survey is S.

- Excavation - (cu. yds.)

City	7710	None	7710
Fill	70.9		760.4
Cut	71		76.0
	78.0		836.4

Note:
 Center now part on S
 of 1/4 Sec 120 not shown
 with 65% on final return.



FIGG AVE.
 E.L. DODGE to W.L. SENECA.
 30' Conc. f. Ck.
 City of Wichita, Kansas
 B.E. Smith City Engineer
 March 1954 Proj. No. 08215