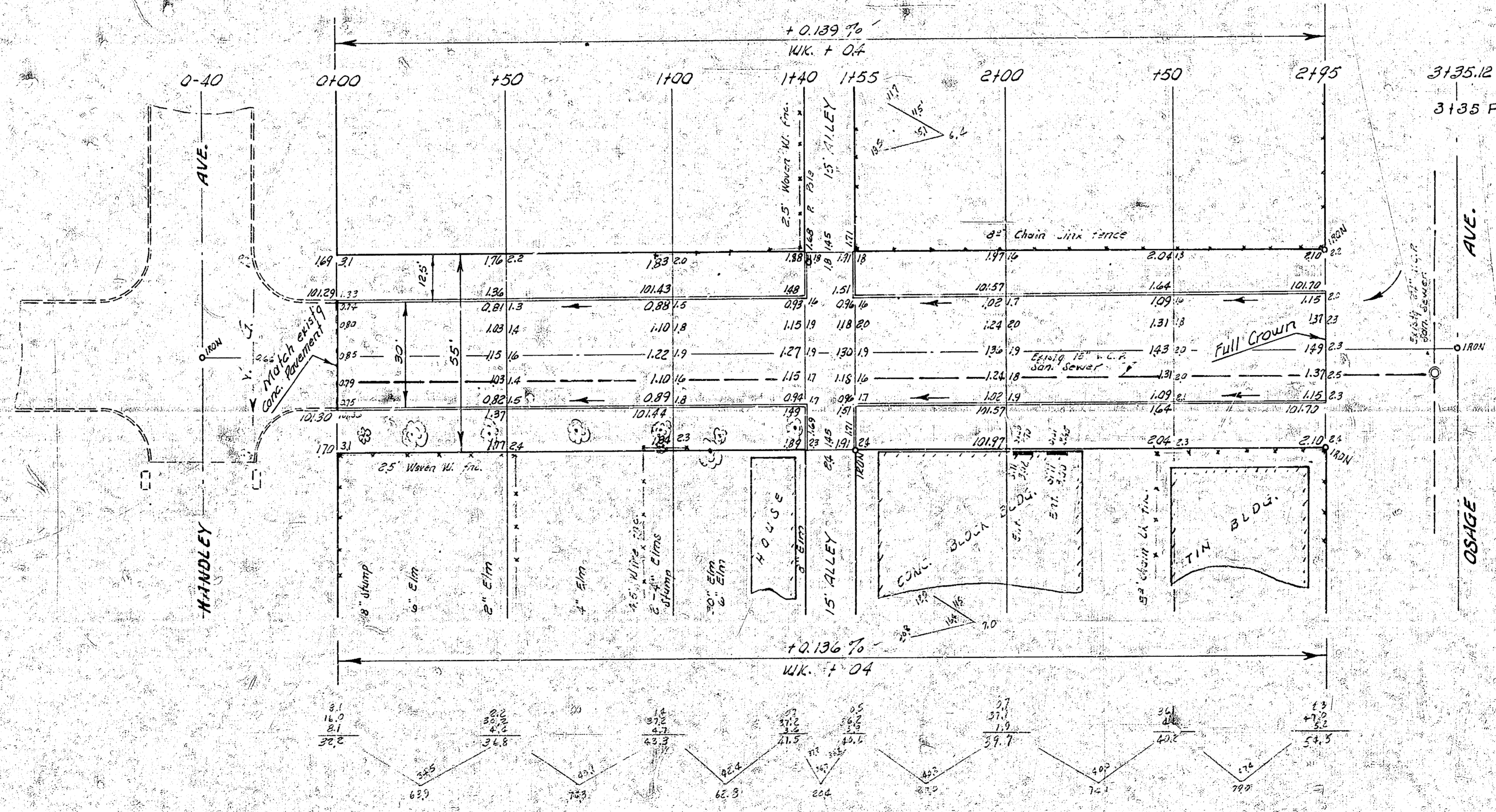


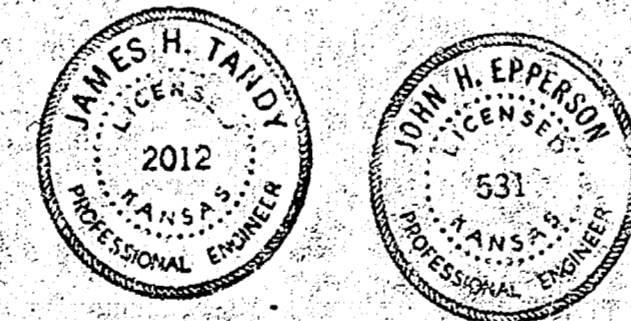
B.M. 104.50 SW cor. conc. Porch to NE cor. Figg of Handley.
 Chaining east on to Figg. 55' 8/16"

Survey 7-27-28
 Plotted 5-11-28
 Exc. 5-11-28
 Checked 5-11-28



EARTH WORK
 EXCAVATION

CITY	PROP.
33.8	421.1
5.4	42.1
37.2	463.2



FIGG AVE.
 EL HANDLEY TO W. OSAGE
 30' Conc. & Cb.
 CITY OF WICHITA, KANSAS
 B. E. SMITH CITY ENGINEER
 Sept. 1928 PROJ. NO. C19-128