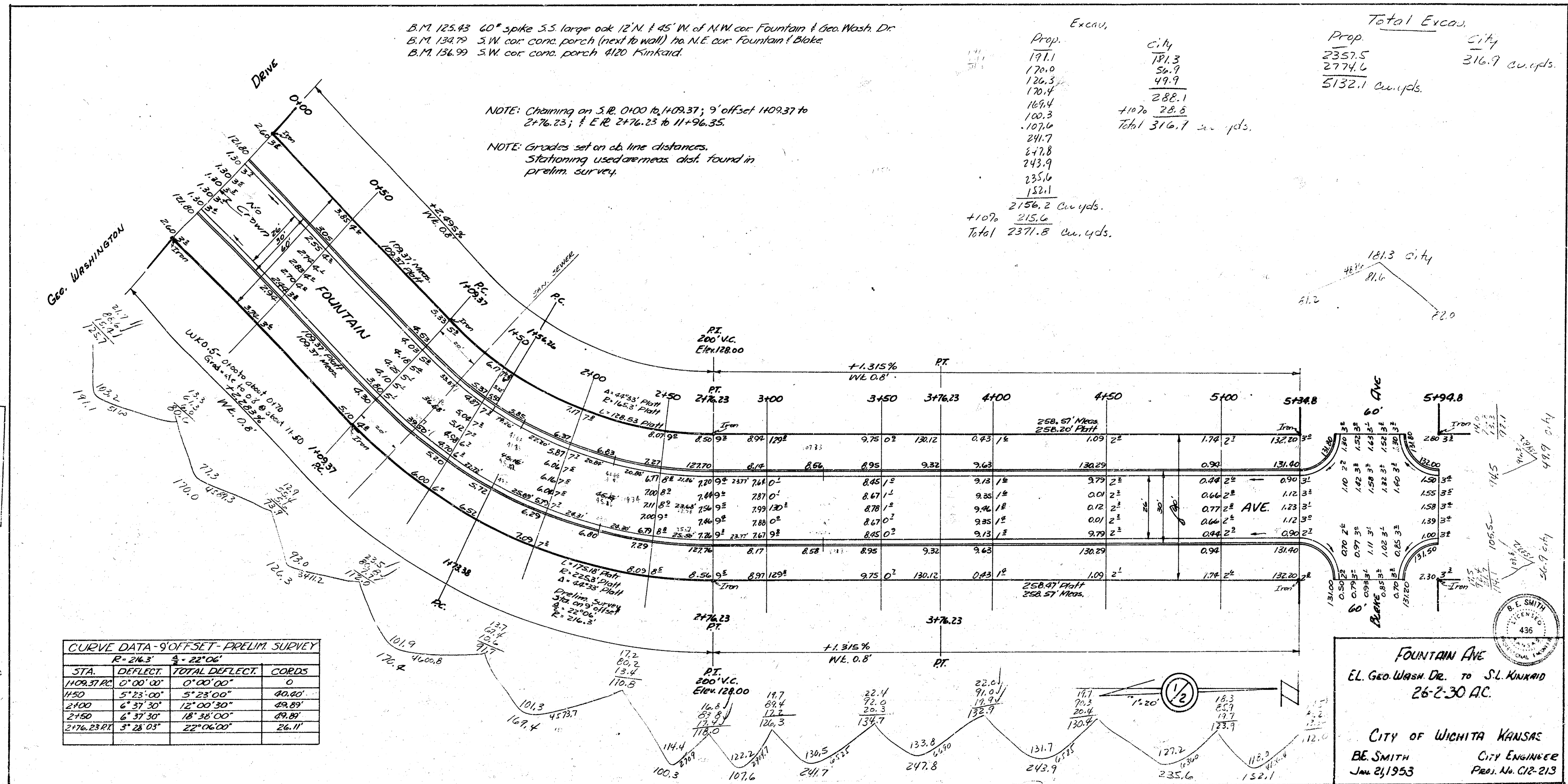


B.M. 125.43 60° spike S.S. large oak 12' N. & 45' W. of N.W. cor Fountain & Geo. Wash. Dr.
 B.M. 134.79 S.W. cor. conc. porch (next to wall) to N.E. cor Fountain & Blake
 B.M. 134.99 S.W. cor. conc. porch 4120 Kinkaid.

NOTE: Chaining on S.R. 0100 to 1409.37; 9' offset 1409.37 to 2176.23; & E.R. 2176.23 to 11+96.35.

NOTE: Grades set on ch. line distances. Stationing used are meas. dist. found in prelim. survey.

Excav.		Total Excav.	
Prop.	City	Prop.	City
191.1	181.3	2357.5	316.7 cu. yds.
170.0	56.9	2774.6	
126.3	49.9		
170.4	288.1	5132.1 cu. yds.	
169.4	28.8		
100.3	107.6		
107.6	241.7		
241.7	647.8		
647.8	243.9		
243.9	235.6		
235.6	152.1		
152.1			
2156.2 cu. yds.			
+107.6	215.6		
Total	2371.8 cu. yds.		



CURVE DATA - 9' OFFSET - PRELIM. SURVEY

STA.	R=216.3	Δ=22°06'	CORDS
1109.37 PC	0°00'00"	0°00'00"	0
1450	5°23'00"	5°23'00"	40.60'
2100	6°37'30"	12°00'30"	49.89'
2150	6°37'30"	18°38'00"	49.89'
2176.23 PT	3°28'03"	22°06'00"	26.11'

FOUNTAIN AVE
 EL. GEO. WASH. DR. TO S.L. KINKAID
 26-2-30 A.C.

CITY OF WICHITA KANSAS
 B.E. SMITH
 Jan 21, 1953
 CITY ENGINEER
 PROJ. NO. C12-213

Survey No. 12
 Plan No. 12
 City of Wichita

Excav.	
Prop.	City
246.6	
232.4	
232.2	
221.1	
209.8	
209.3	
213.9	
216.9	
214.6	
199.1	
180.6	
143.9	
2522.7	cu. yds.
1167	252.2
	2774.6
	cu. yds.

