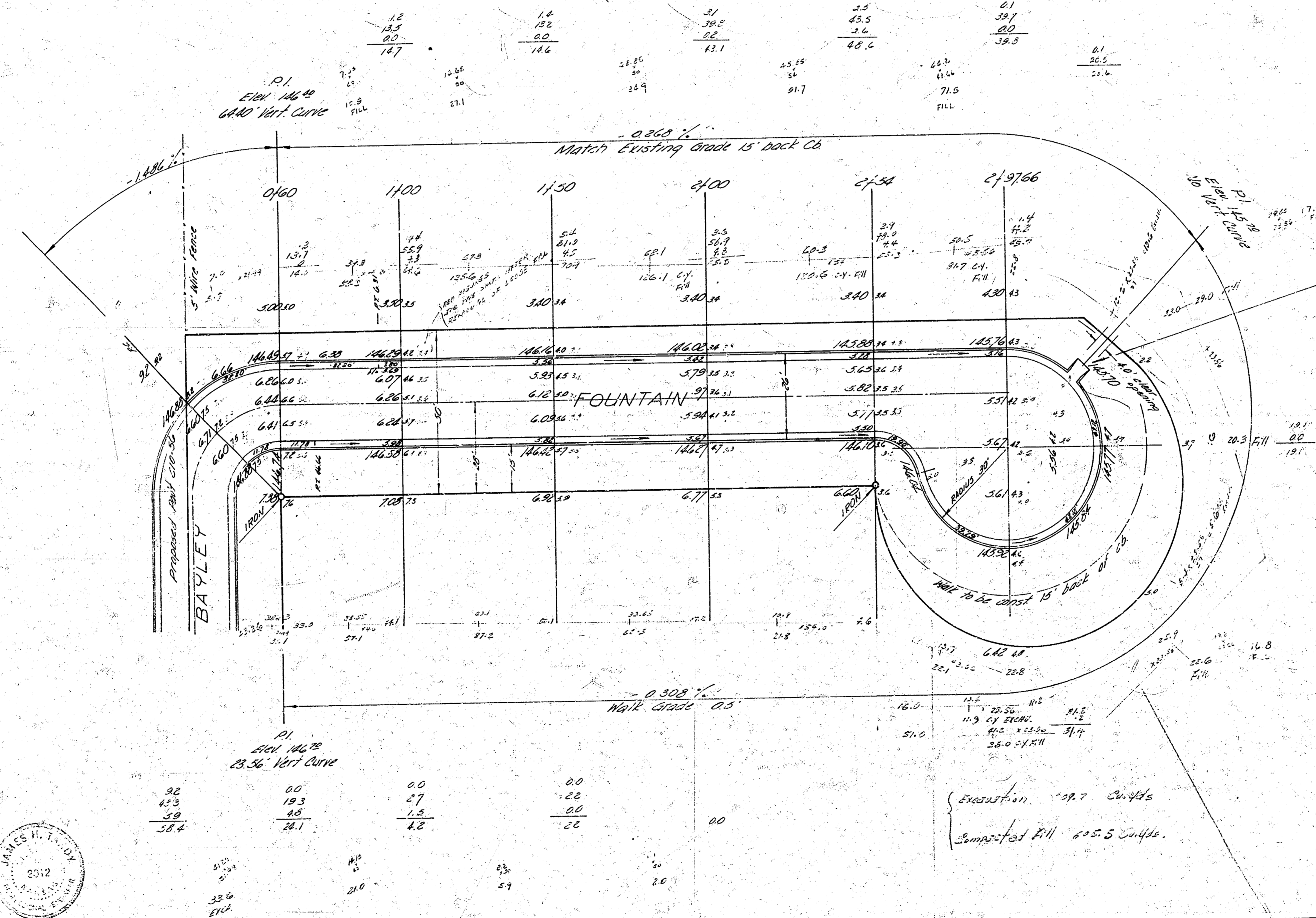
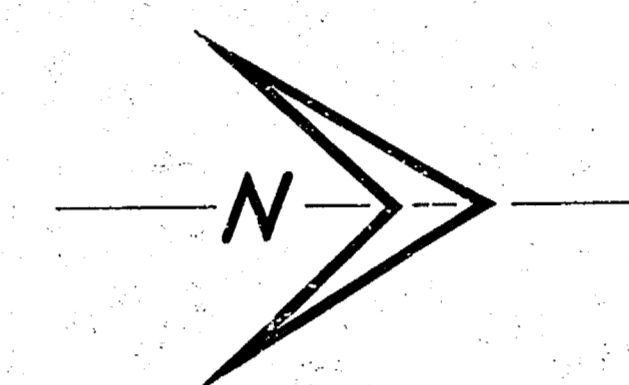


B.M. 15138 R.R. spike S.S. of guy pole 140' E. of Fountain & 30' N. of Bayley.
 B.M. 15210 4" on walk E. Bluffview & 20' N. of N.L. Boston.



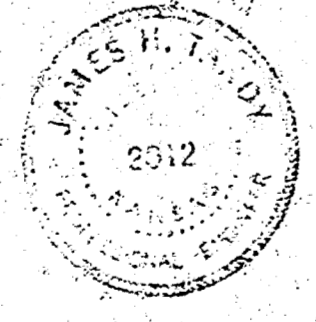
Note to Contractor:
 Leave 2' curb opening & const. conc. spillway toward creek. Length of spillway to be determined by city field staff on the job site. Thickness 6"

COMP. FILL	
PROPERTY	CITY
276.2	276.2
277.0	277.0
277.2	277.2

EXCAVATION	
PROPERTY	CITY
6.2	6.2
6.3	6.3
6.8	6.8

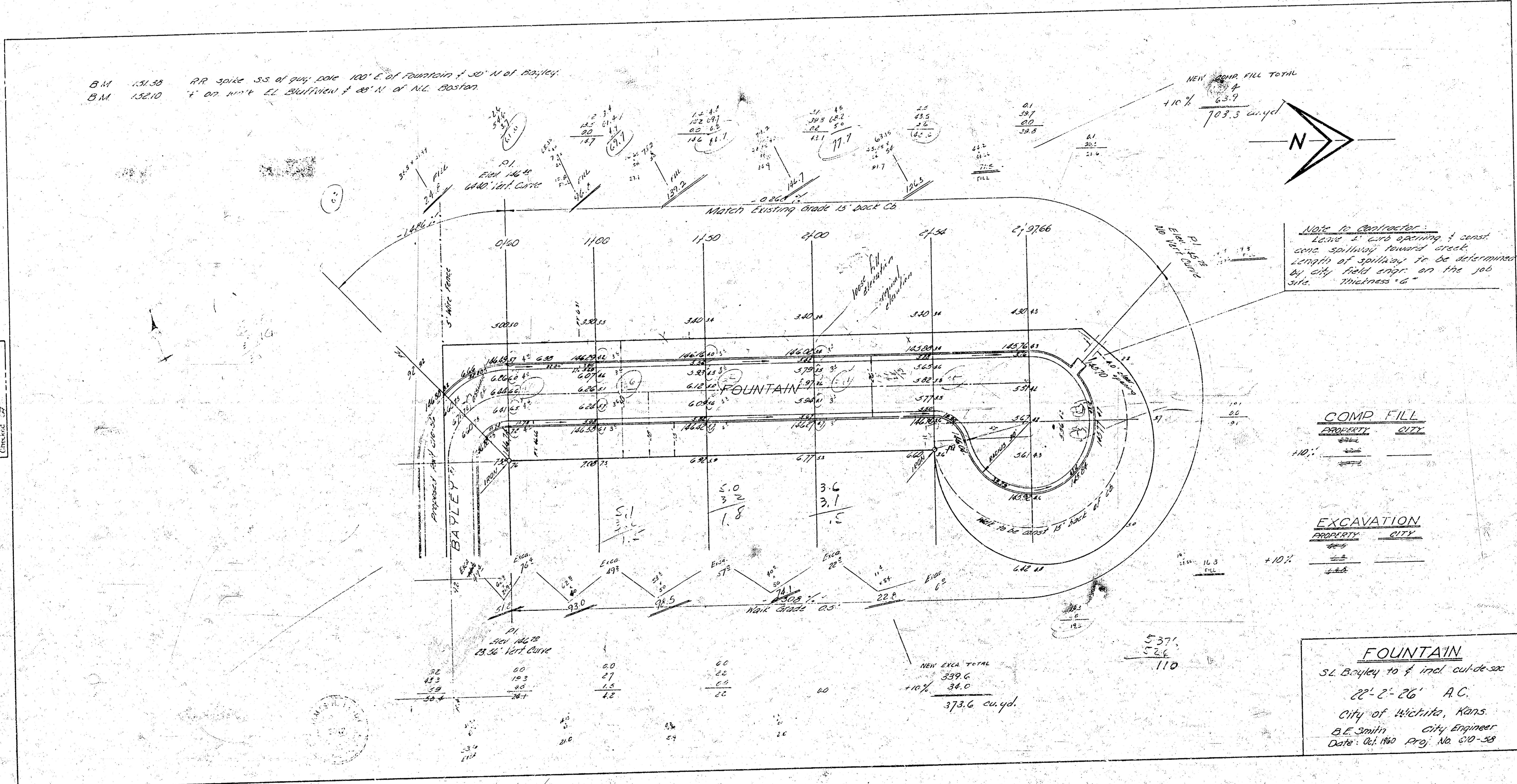
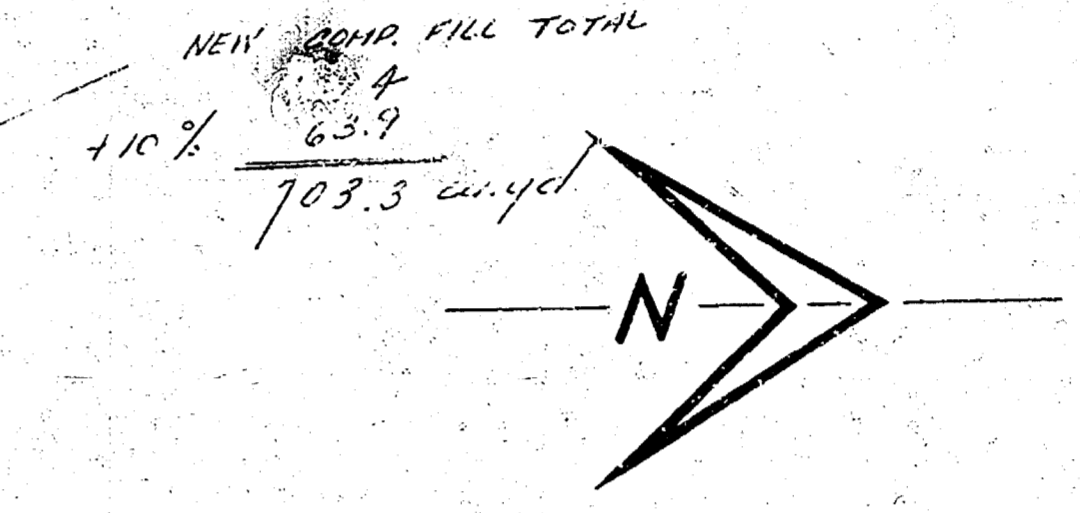
FOUNTAIN
 S.L. Bayley to 4' incl. cut-de-sac
 22' x 26' A.C.
 City of Wichita, Kans.
 B.E. Smith City Engineer
 Date: Oct. 1940. Proj. No. C10-58

Survey
 Checked
 12-1-40



SAVE FOR FINAL ESTIMATE

B.M. 15138 RR spike 33' of guy cable 100' E of fountain & 30' N of Bayley
 B.M. 15210 4' 00" high EL Bluffton & 20' N of N.L. Boston



NEW SAND FILL TOTAL
 63.9
 +10%
 70.3 cu.yd.

Note to Contractor:
 2'-0" curb opening & const.
 conc. spillway toward creek.
 Length of spillway to be determined
 by city field engr. on the job
 site. Thickness 6"

COMP. FILL	
PROPERTY	CITY
110.1	0.0
0.0	0.0
0.0	0.0

EXCAVATION	
PROPERTY	CITY
110.1	0.0
0.0	0.0
0.0	0.0

FOUNTAIN
 S.L. Bayley to & incl. cut-de-sac
 22'-2" x 26' A.C.
 City of Wichita, Kans.
 O.E. Smith City Engineer
 Date: Oct. 1920 Proj. No. 510-38

NEW EXCA TOTAL
 339.6
 +10%
 373.6 cu.yd.

537.1
 526.6
 110

Scale 1" = 10'-0"
 1" = 10'-0"
 1" = 10'-0"