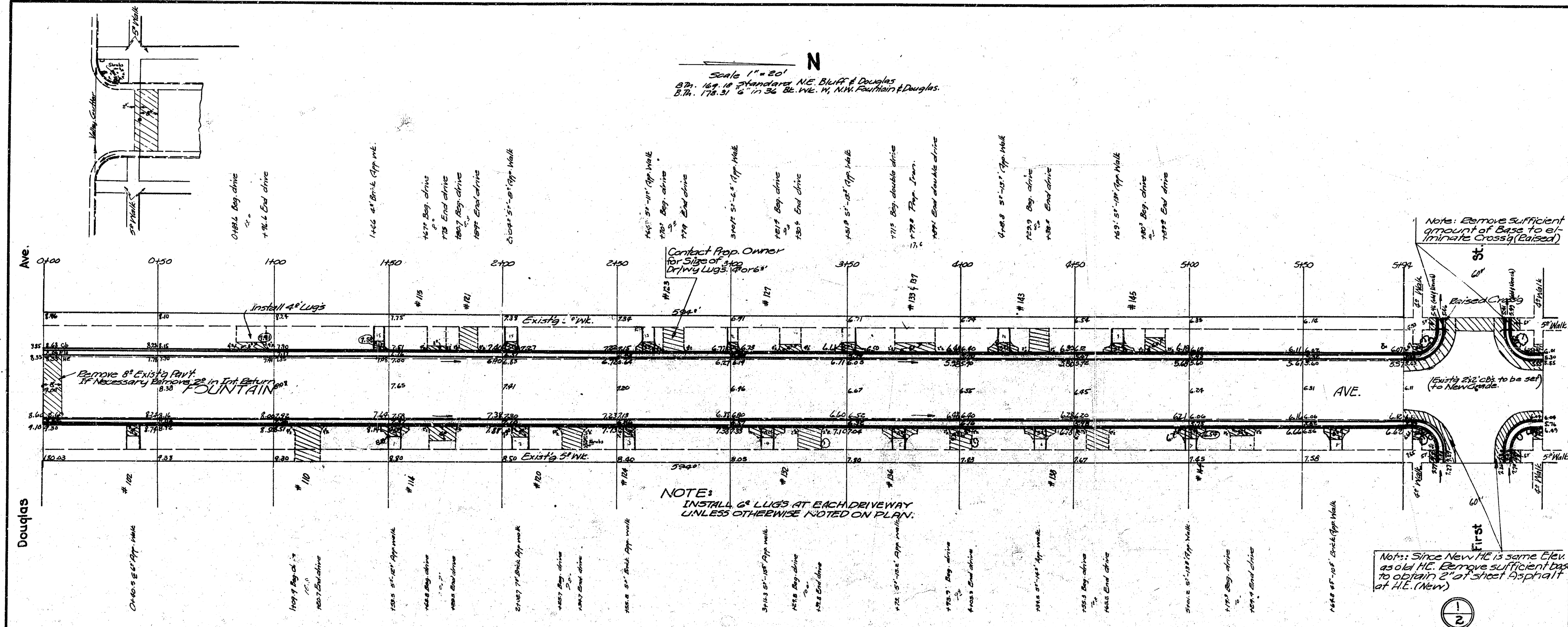


Ref. Plat. C.H. Mills Pl. 66

Scale 1" = 20'  
 N  
 87<sup>th</sup>. 169.18 Standard N.E. Bluff & Douglas  
 87<sup>th</sup>. 175.31 " in 3d. 8c. W.E. 14. N.N. Fountain & Douglas.



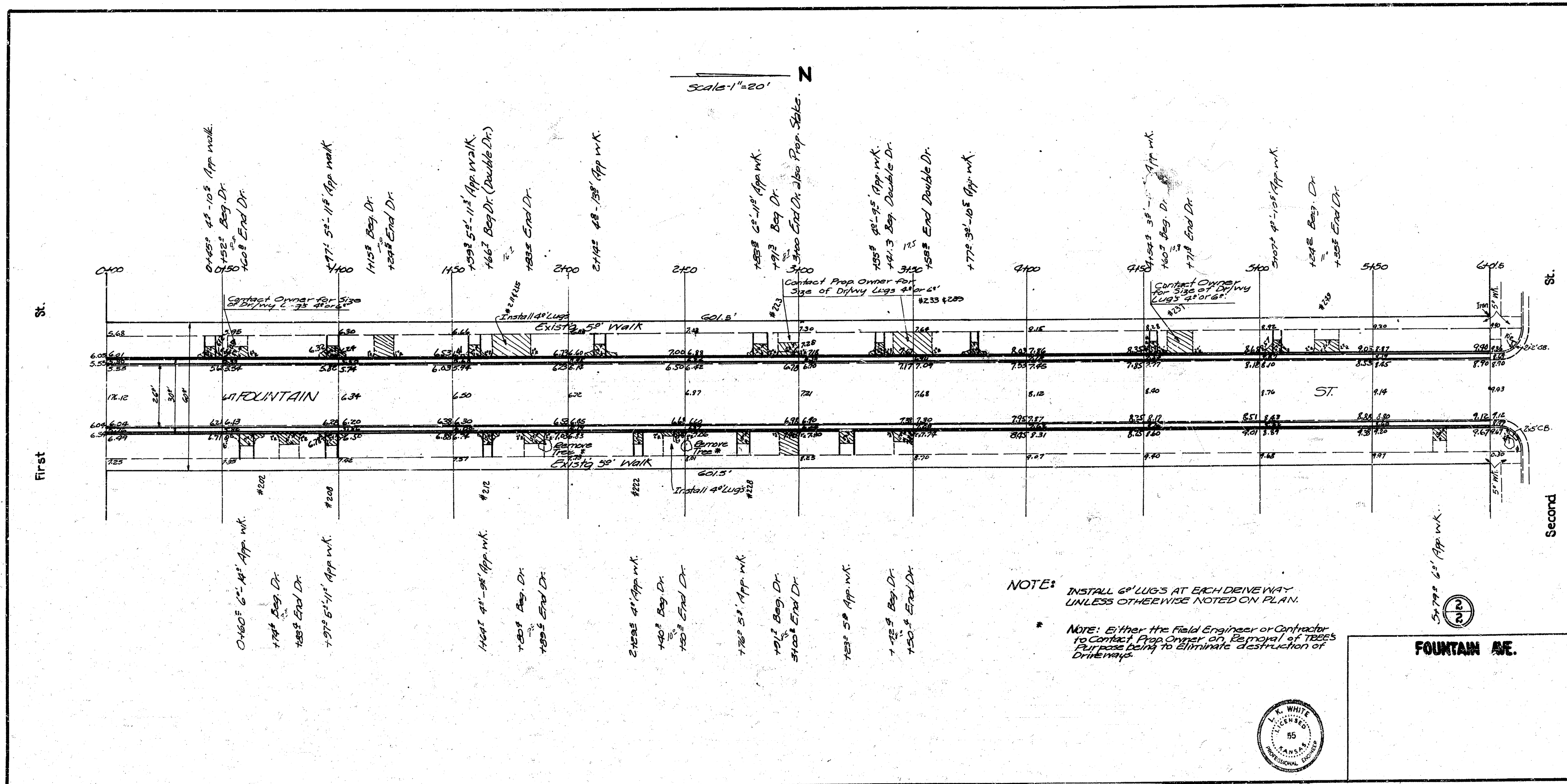
GRAND TOTALS

Sand Fill	EXCAV.	Fill (Sand)
50.0	16.5	2.0 Cuyds
33.7	9.0	
16.0	25.8	
+1070	8.2	4.8
Total Cuyds	89.9	48.2

**FOUNTAIN AVE.**  
 N. L. Douglas to S. L. 2<sup>nd</sup>  
 30' Repave A.C.  
 CITY OF WICHITA KANSAS  
 L. K. WHITE CITY ENGINEER  
 JAN. 1951, PROJ. NO. C10-170

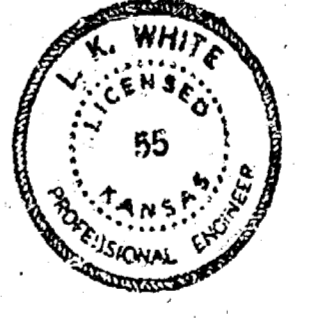


27 66



NOTE: INSTALL 6" LUGS AT EACH DRIVEWAY UNLESS OTHERWISE NOTED ON PLAN.

\* NOTE: Either the Field Engineer or Contractor to Contact Prop Owner on Removal of TREES Purpose Being to Eliminate destruction of Driveways.



FOUNTAIN AVE.