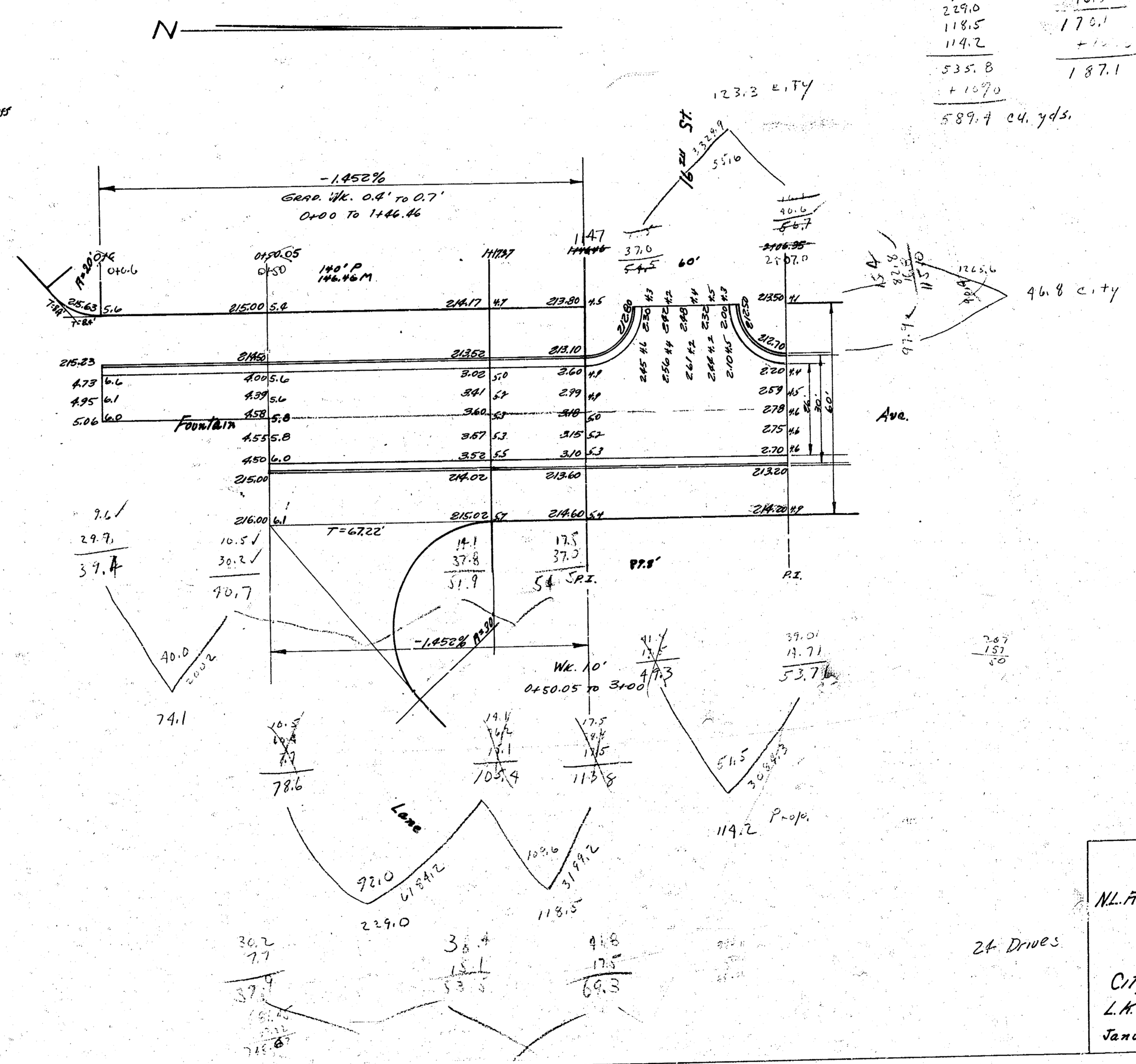


Total

Prop.	City
589.4	1871 cu. yds.
<u>131.6</u>	
721.0	cu. yds.

B.M. 2052 RR Spike in N.W. Cor. Blk. S.L. 17th - W.L. 21st
 Note: Stationing is on W.P.L.

Prop.	City
74.1	123.7
229.0	94.9
118.5	176.1
119.2	
<u>535.8</u>	187.1
+ 107.0	
589.4	cu. yds.



①
②

Fountain Ave.
 N.L. Repents - S.L. 17th
 26'-2'-30' A.C.
 City of Wichita, Kansas
 L.K. White City Engineer
 January 1927 Project 018-174

74.1
 43.2
 146.4

24 Drives

P. No. 11.0
 1.91
 185.0
 137.6
 120.7
 119.8
 105.7
 98.4
 77.2
 33.5
 135.5
 179.6
 110.7
 131.6 24.445

