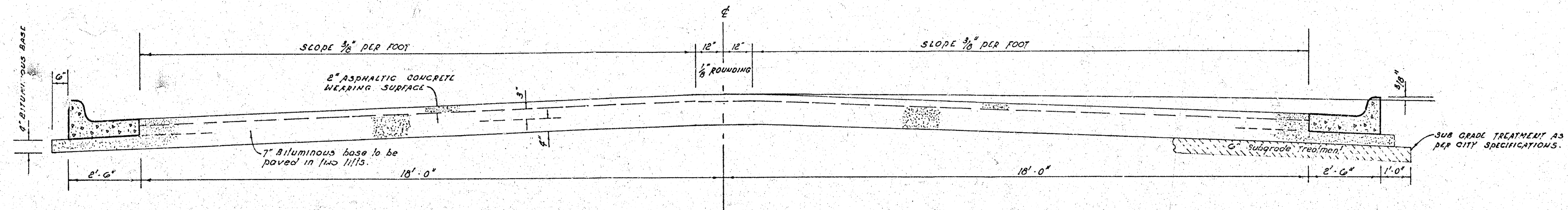


FRAZIER LANE & ROBIN ROAD

E. L. TYLER ROAD TO S. L. CENTRAL AVE.



TYPICAL SECTION

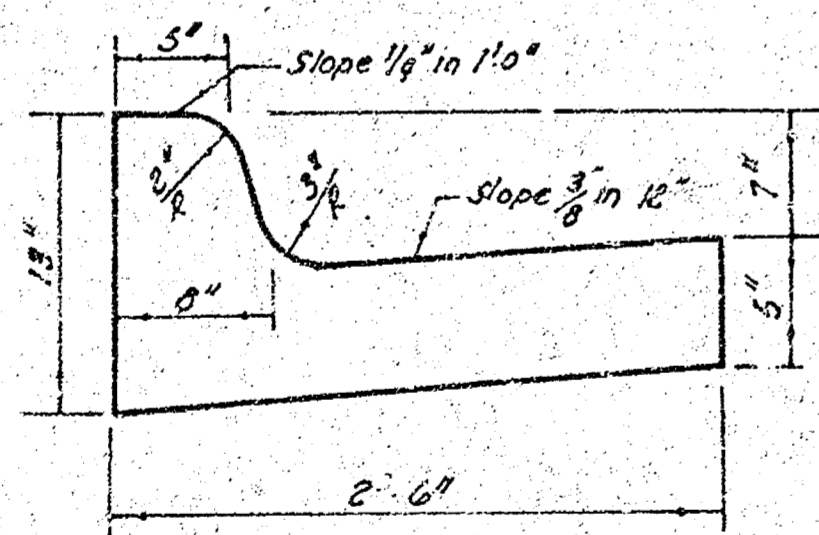
The A.C. pavement between the curb & gutter shall be paid as sq yds 9" A.C. pavement (7" Bituminous Base). The Bituminous Base under the curb & gutter shall be paid as sq yds 9" Bituminous Base.

41' ASPHALTIC CONCRETE PAVEMENT WITH BITUMINOUS BASE

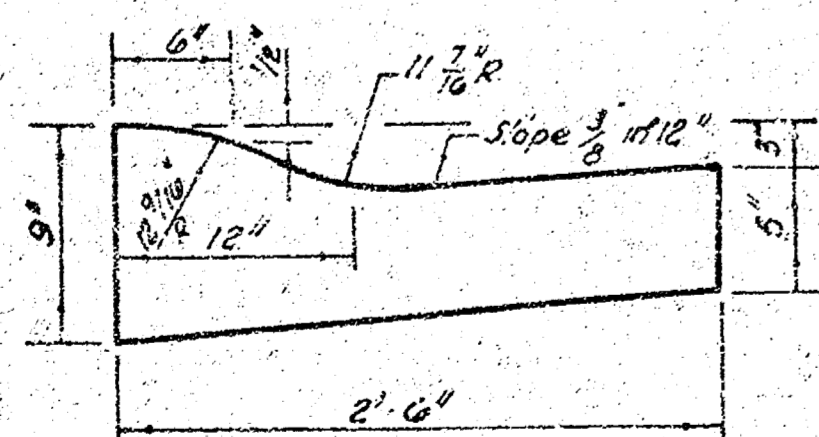
TACK COAT OF EMULSIFIED ASPHALT (SS-1H) SHALL BE APPLIED AT AN APPROXIMATE RATE 0.05 GALLONS PER SQ YD BETWEEN LIFTS OF ASPHALTIC MATERIALS WHEN ORDERED BY THE ENGINEER. TACK COAT WILL NOT BE PAID FOR DIRECTLY AND SHALL BE CONSIDERED AS SUBSIDIARY TO PRICE BID FOR ASPHALTIC PAVEMENT.

BITUMINOUS BASE AND ASPHALTIC CONCRETE WEARING SURFACE SHALL BE PLACED WITH A LAYDOWN MACHINE HAVING AUTOMATIC CONTROLS FOR CROWN AND GRADE. CONSTRUCTION JOINTS IN EACH LIFT SHALL BE STAGGERED A MINIMUM DISTANCE OF 1' WITH JOINTS IN PRECEDING LIFTS AND SUCH THAT A JOINT WILL BE CONSTRUCTED ON THE PAVEMENT CENTERLINE IN THE TOP LIFT.

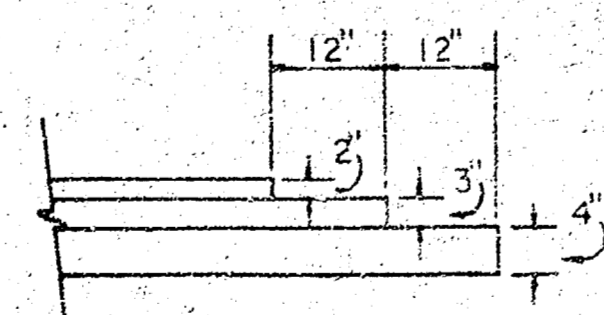
COMBINED CURB & GUTTER



ROLL TYPE CURB & GUTTER



DETAIL OF TRANSVERSE CONSTRUCTION JOINTS



TRANSVERSE CONSTRUCTION JOINTS SHALL BE CONSTRUCTED IN FLEXIBLE BASE PAVEMENTS AT LOCATIONS WHERE PAVEMENT TEMPORARILY ENDS TO FACILITATE FUTURE PAVEMENT CONSTRUCTION AS SHOWN BY DETAIL. THE COST OF CONSTRUCTING THE TRANSVERSE CONSTRUCTION JOINTS SHALL NOT BE MEASURED OR PAID FOR DIRECTLY BUT SHALL BE INCLUDED IN THE BID PRICE FOR SQUARE YARDS OF ASPHALTIC CONCRETE PAVEMENT.

Manipulation = 7,630.0 S.Y.



CITY OF WICHITA, KANSAS

DEPARTMENT of PUBLIC WORKS - Engineering Division.

DEAN S. SELLERS ACTING CITY ENGINEER

DATE _____ PROJ. N. 47276 24580832 00000001

FILMED FROM THE BEST AVAILABLE COPY

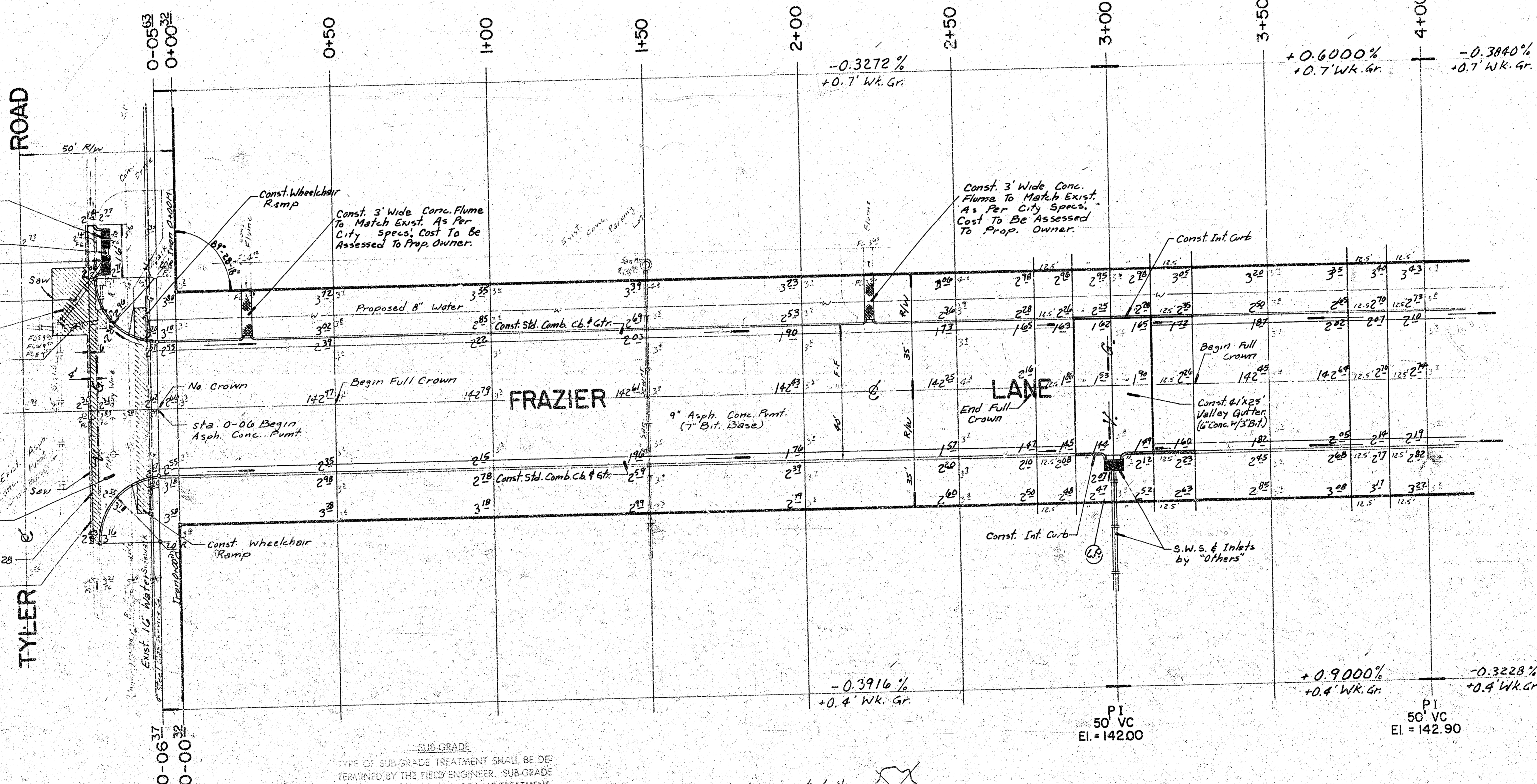
B.M. = 143.90 ~ CITY STD, TYLER & CENTRAL, 56.2' N & 38' W OF E BOTH.
 B.M. = 146.51 ~ "M" IN MUELLER, FIRE HYDRANT WL ROBIN RD, APPROX.
 505' N OF E FRAZIER.

Remove Exst. Inlets & Pipe.
 Const. Type 1A Curb Inlet, W: 4'-2", Top 142.70.
 Install 6" of 15" Pipe USFL 139.80, DSFL 139.70
 Const. Type 1A Curb Inlet W: 4'-2", Top 142.71.
 Install 22' of 18" Pipe USFL 137.60, DSFL 139.40
 Remove & Replace A.C. Punt.

Remove Exst. Pipe & Plug Manhole. Manhole Plug Incidental to Proj.
 Note: Contractor to Connect New 18" Pipe to Exst. Manhole. Cost, Including Invert Reconst. To be Incidental to Proj.

Const. 9" Valley Gutter (6" Conc. w/ 3" Bit.)
 Match Exst. H. E. @ Sta 0+28

Note: Saw Joint, Asph. Removal & Asph. Replacement Necessary to Match Exst. Punt. Shall be Incidental to Proj.
 Save Exst. Key Joint Steel & Tie into New Conc. Punt.



SUB-GRADE
 TYPE OF SUB-GRADE TREATMENT SHALL BE DETERMINED BY THE FIELD ENGINEER. SUB-GRADE TREATMENT MAY CONSIST OF LIME TREATMENT, CEMENT TREATMENT, SUB-GRADE MODIFICATION, OR ANY COMBINATION OF THESE.

Note: Trees to be removed are marked thus except that any tree marked for removal which in the opinion of the Engineer can be saved, shall be spared.

Engineer to take ties to & replace any irons disturbed by construction.

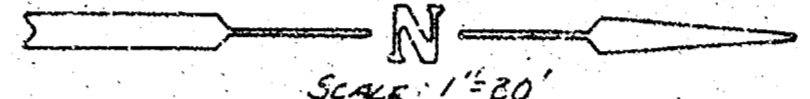
Contractor to coordinate work with sewer contractors.

Engineer to Take New X-Sections Prior to Construction.

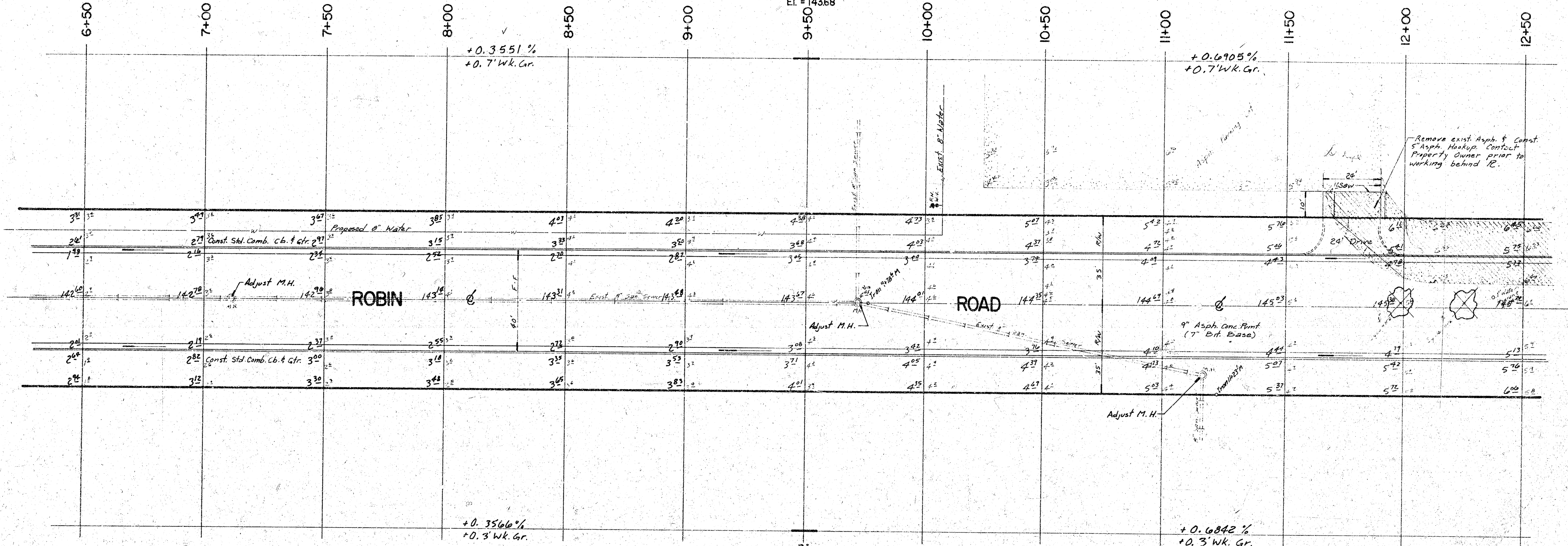
EARTHWORK

	PROPERTY EXCAVATIONS	CITY EXCAVATION
X-SECTIONS	4,563.0 C.Y.	93.7 C.Y.
10%	456.3 C.Y.	9.4 C.Y.
TOTALS	5,019.3 C.Y.	103.1 C.Y.

FRAZIER LN. & ROBIN RD.
 E. L. TYLER RD. TO S. L. CENTRAL AVE
 472 76 245 80832 000 000 001



Scale = 1"=20'
PI - NOVC
EI = 143.68



PI
NO VC
EI = 143.71

FRAZIER LN. & ROBIN RD.
E. L. TYLER RD. TO S. L. CENTRAL AVE.
472 76 245 80832 000 000 001

FILMED FROM THE BEST
AVAILABLE COPY.....

