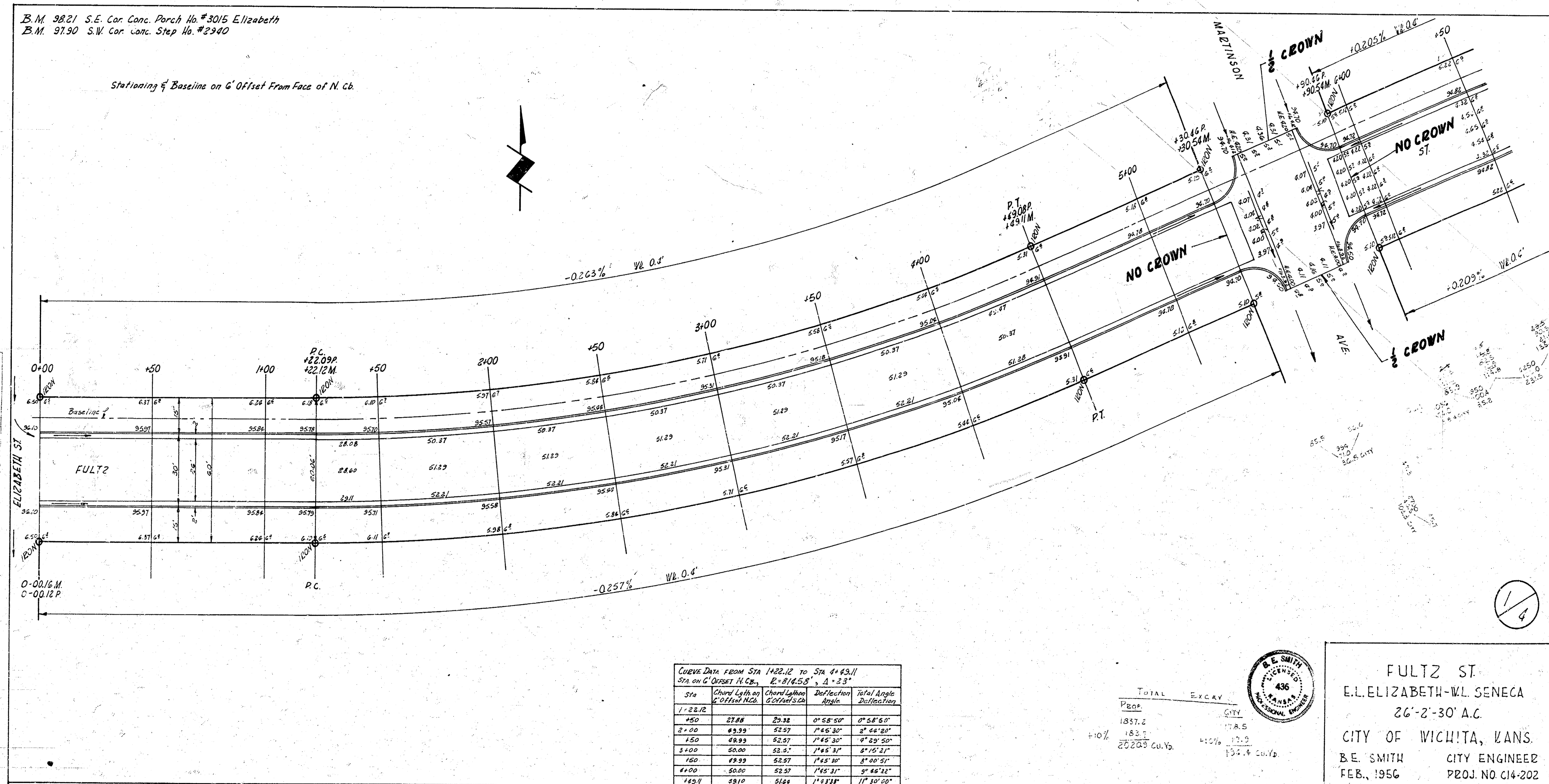


B.M. 98.21 S.E. Cor. Conc. Porch No. 3015 Elizabeth
 B.M. 97.90 S.W. Cor. Conc. Step No. 2340

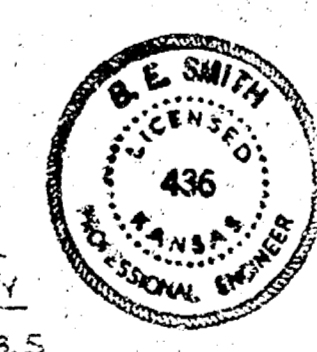
Stationing of Baseline on G' Offset From Face of N. Cb.



Curve Data from Sta 1+22.12 to Sta 4+43.11
 Sta on G' Offset N.C.B. $E=814.58'$ $\Delta=23^\circ$

Sta	Chord Length G' Offset N.C.B.	Chord Length G' Offset S.C.B.	Deflection Angle	Total Angle Deflection
1+22.12	27.68	29.32	0° 58' 50"	0° 58' 50"
2+00	43.29	52.57	1° 45' 30"	2° 44' 20"
3+00	60.00	52.57	1° 45' 31"	4° 29' 51"
4+00	60.00	52.57	1° 45' 31"	5° 45' 22"
4+43.11	59.10	51.61	1° 45' 31"	7° 30' 53"

PEAK	TOTAL	EXC.V.	CITY
1857.2	183.2	172.0	172.0
10%	20233 Cu.Yd.	4126	134.4 Cu.Yd.



FULTZ ST.
 E. ELIZABETH-W. SENECA
 26'-2'-30" A.C.
 CITY OF WICHITA, KANS.
 B.E. SMITH CITY ENGINEER
 FEB., 1956 PROJ. NO. C14-202

Checked by: [Signature]
 Date: [Date]

