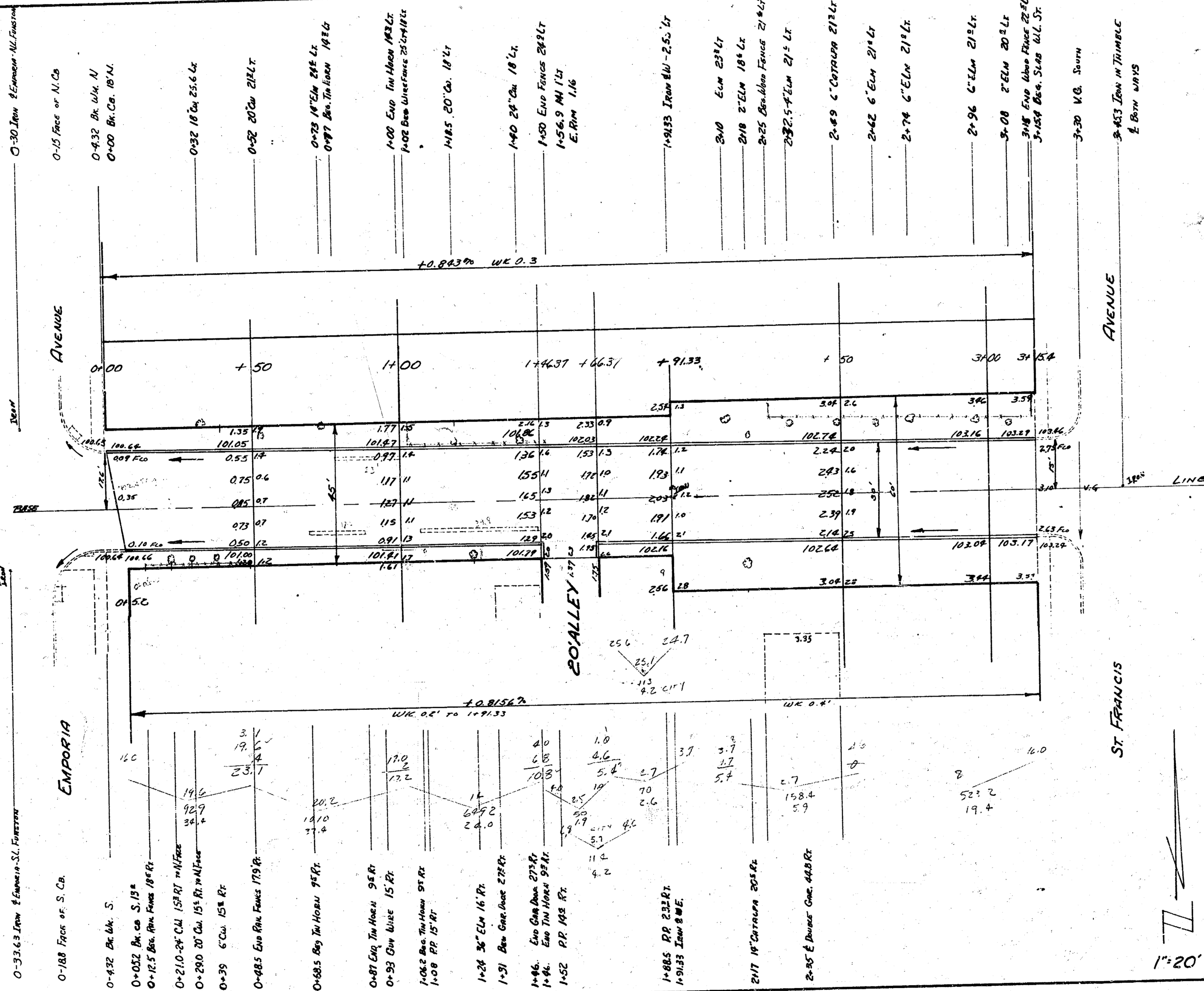


B.M. 102.84 Top of Iron in Thumb & St Francis
& Funston

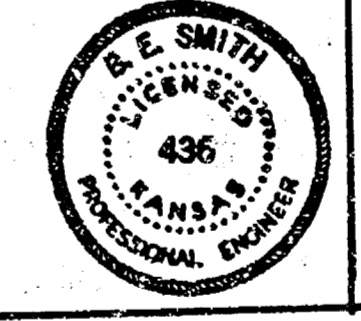
Ties to Irons @ 14.9133 @ Funston East -
42.62 S.W. to C.Nail of 3 S Side PP
32.30 S. to N.E. cor. 1st step 511E FUNSTON
24.15 N. to C.Nail of 3 E Side PP
@ Funston W
43.50 S.W. to Nail Center of 3 S Side PP
31.78 S.W. N.E. cor. 1st step 511E FUNSTON
21.86 N. to C.Nail of 3 E Side PP

PLANNING ENGINE
Checked
Exc. 2/25/33



125.5
125.5
130.207
120.40

FUNSTON AVE.
EL. EMPORIA TO W.L. ST. FRANCIS
30' CONC. & CB.



CITY OF WICHITA, KANSAS
B.E. SMITH CITY ENGINEER
Jan. 14, 1933 Proj. No. C12-172