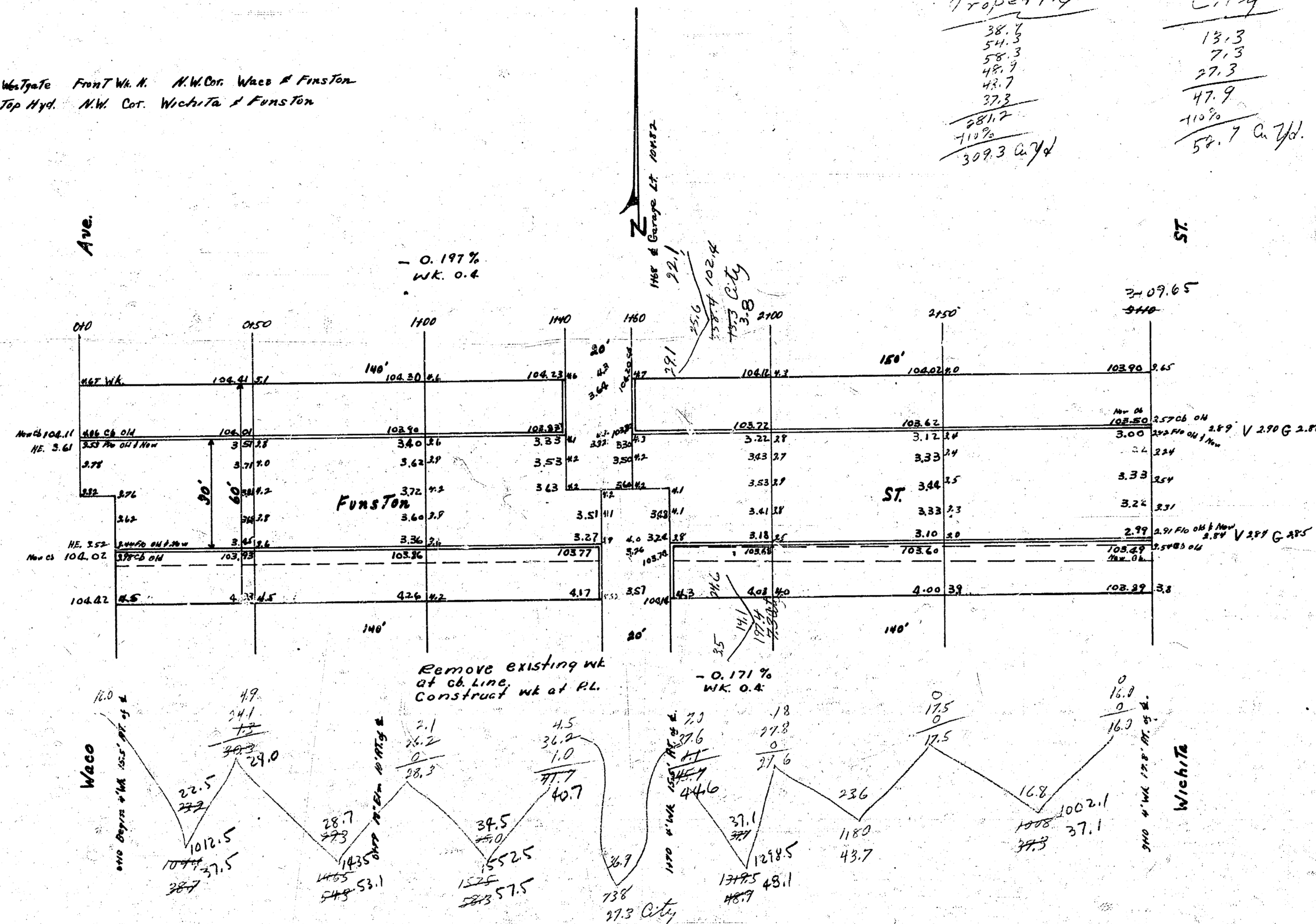


BK # 19 J4

B.M. 10454 "W" in East Wichita Front W. N. N.W. Cor. Waco & Funston  
 B.M. 10410 "T" in Troy Top Hyd. N.W. Cor. Wichita & Funston

Property	City
38.4	13.3
54.3	7.3
48.7	27.3
37.3	47.9
281.7	110.2
710.2	52.7 a. 711.
3093 a. 711.	



Funston ST.  
 E.L. Waco — W.L. Wichita  
 30' Conc. + Cb.  
 City of Wichita, Kansas  
 L.M. White City Engineer  
 May 1940 Project CH-48

4 14 5 10