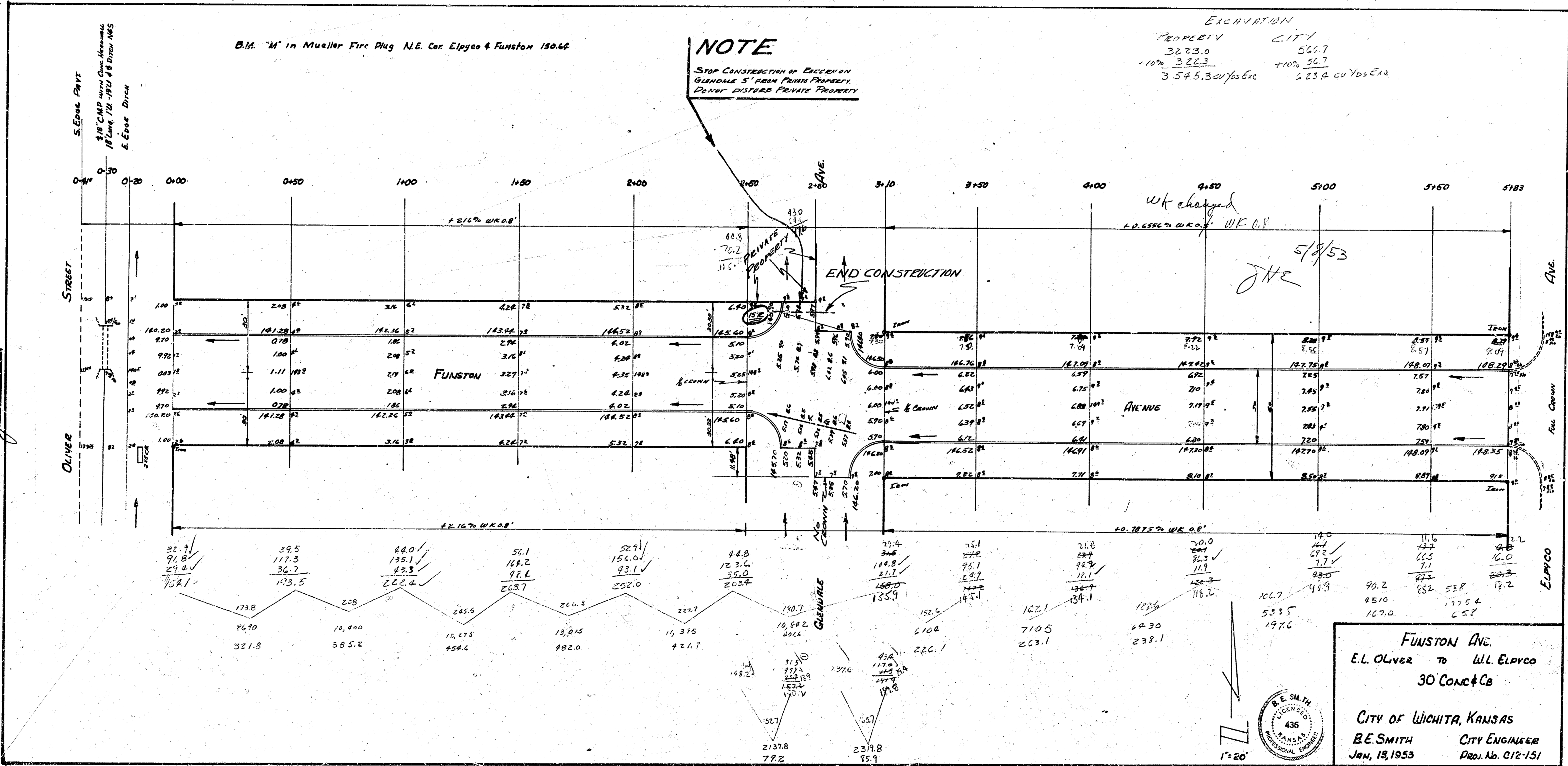


B.M. "M" in Mueller Fire Plug N.E. Cor. Elpyco & Funston 150.66

NOTE
 STOP CONSTRUCTION OF BASEMENT
 FOUNDATION 5' FROM PUBLIC PROPERTY.
 DO NOT DISTURB PRIVATE PROPERTY.

EXCAVATION
 PROPERTY CITY
 3223.0 5667
 +10% 3223.0 +10% 5667
 3545.3 cu Yds Exc 6234 cu Yds Exp

Checked by
 E.L. OLIVER
 City Engineer
 5/8/53



FUNSTON AVE.
 E.L. OLIVER TO W.L. ELPYCO
 30 CONC & CB
 CITY OF WICHITA, KANSAS
 B.E. SMITH CITY ENGINEER
 JAN. 13, 1953 PROJ. NO. C12-151

