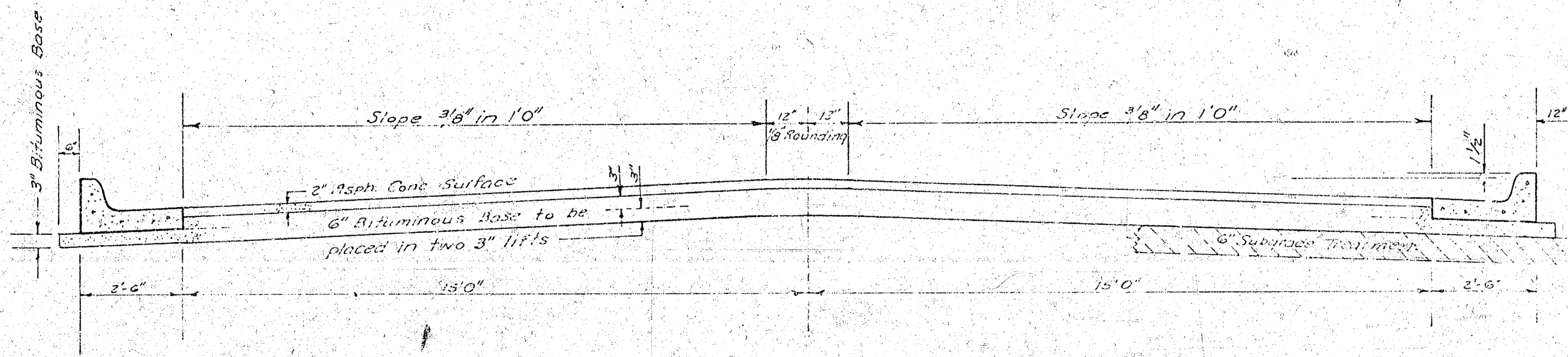


FUNSTON COURTS
 N.L. Funston To Incl. Cul-de-sac (First Court E. Cypress)
 " " " " " (First Court W. Beech)
 472-76-245-80886-000-000-001



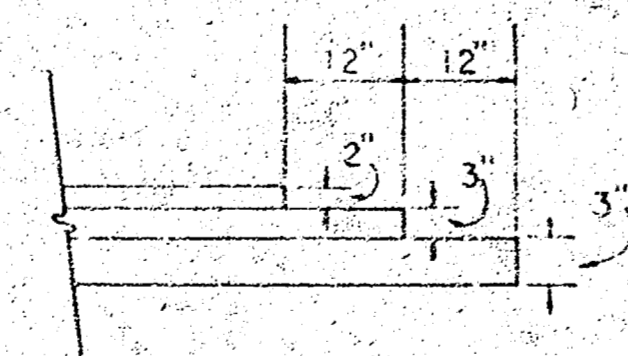
TYPICAL SECTION

35' ASPHALTIC CONCRETE PAVEMENT WITH BITUMINOUS BASE

A TACK COAT OF EMULSIFIED ASPHALT (SS-1H) SHALL BE APPLIED AT AN APPROXIMATE RATE 0.05 GALLONS PER SQ YD BETWEEN LIFTS OF ASPHALTIC MATERIALS WHEN ORDERED BY THE ENGINEER. TACK COAT WILL NOT BE PAID FOR DIRECTLY AND SHALL BE CONSIDERED AS SUBSIDIARY TO PRICE BID FOR ASPHALTIC PAVEMENT.

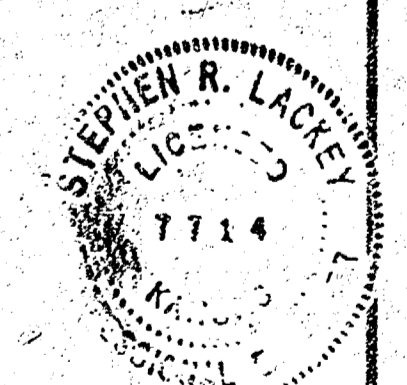
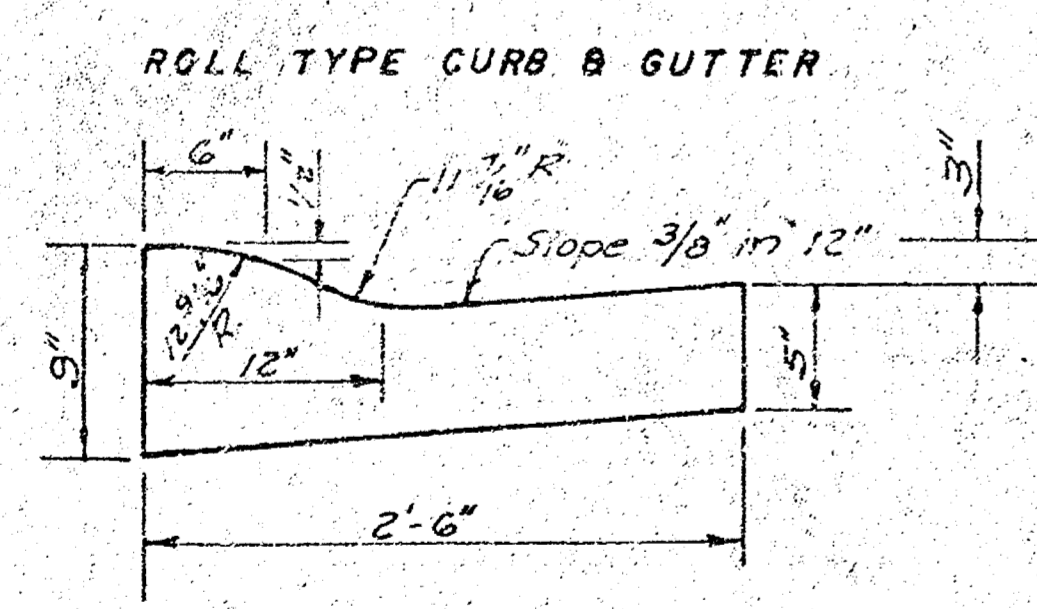
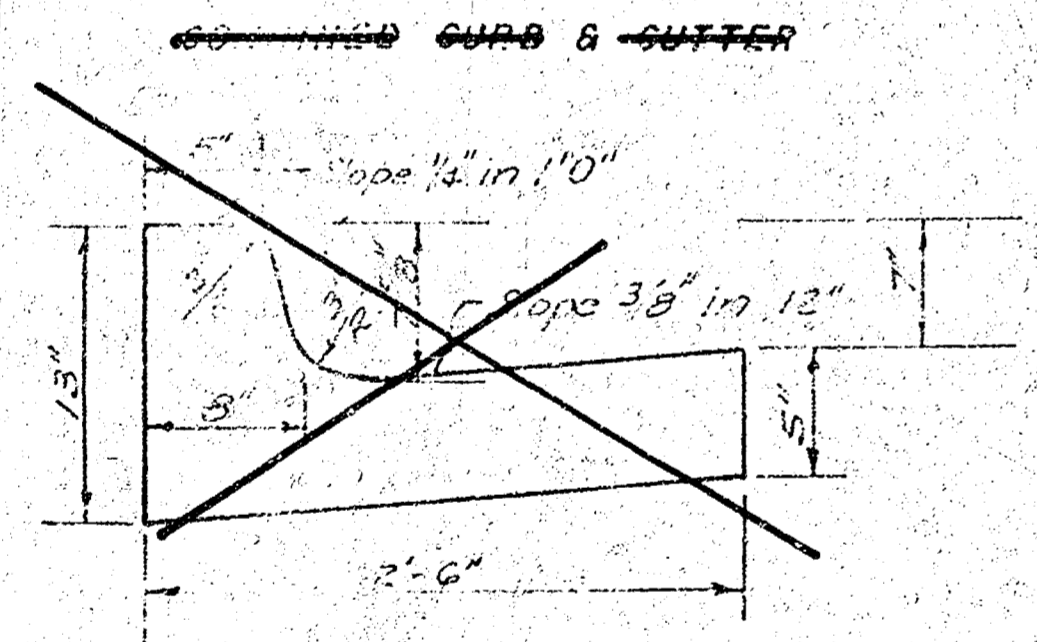
BITUMINOUS BASE AND ASPHALTIC CONCRETE WEARING SURFACE SHALL BE PLACED WITH A LAYDOWN MACHINE HAVING AUTOMATIC CONTROLS FOR CROWN AND GRADE. CONSTRUCTION JOINTS IN EACH LIFT SHALL BE STAGGERED A MINIMUM DISTANCE OF 1' WITH JOINTS IN PRECEDING LIFTS AND PLACED SUCH THAT A JOINT WILL BE CONSTRUCTED ON THE CENTERLINE IN THE TOP LIFT.

DETAIL OF TRANSVERSE CONSTRUCTION JOINTS



TRANSVERSE CONSTRUCTION JOINTS SHALL BE CONSTRUCTED IN FLEXIBLE BASE PAVEMENTS AT LOCATIONS WHERE PAVEMENT TEMPORARILY ENDS TO FACILITATE FUTURE PAVEMENT CONSTRUCTION AS SHOWN BY DETAIL. THE COST OF CONSTRUCTING THE TRANSVERSE CONSTRUCTION JOINTS SHALL NOT BE MEASURED OR PAID FOR DIRECTLY BUT SHALL BE INCLUDED IN THE BID PRICE FOR SQUARE YARDS OF ASPHALTIC CONCRETE PAVEMENT.

The A.C. Pavement between the curb curb & gutter shall be paid as Sq.Yds. 8" A.C. Pavement (6" Bituminous Base). The Bituminous Base under the curb curb & gutter shall be paid as Sq.Yds. 3" Bituminous Base.



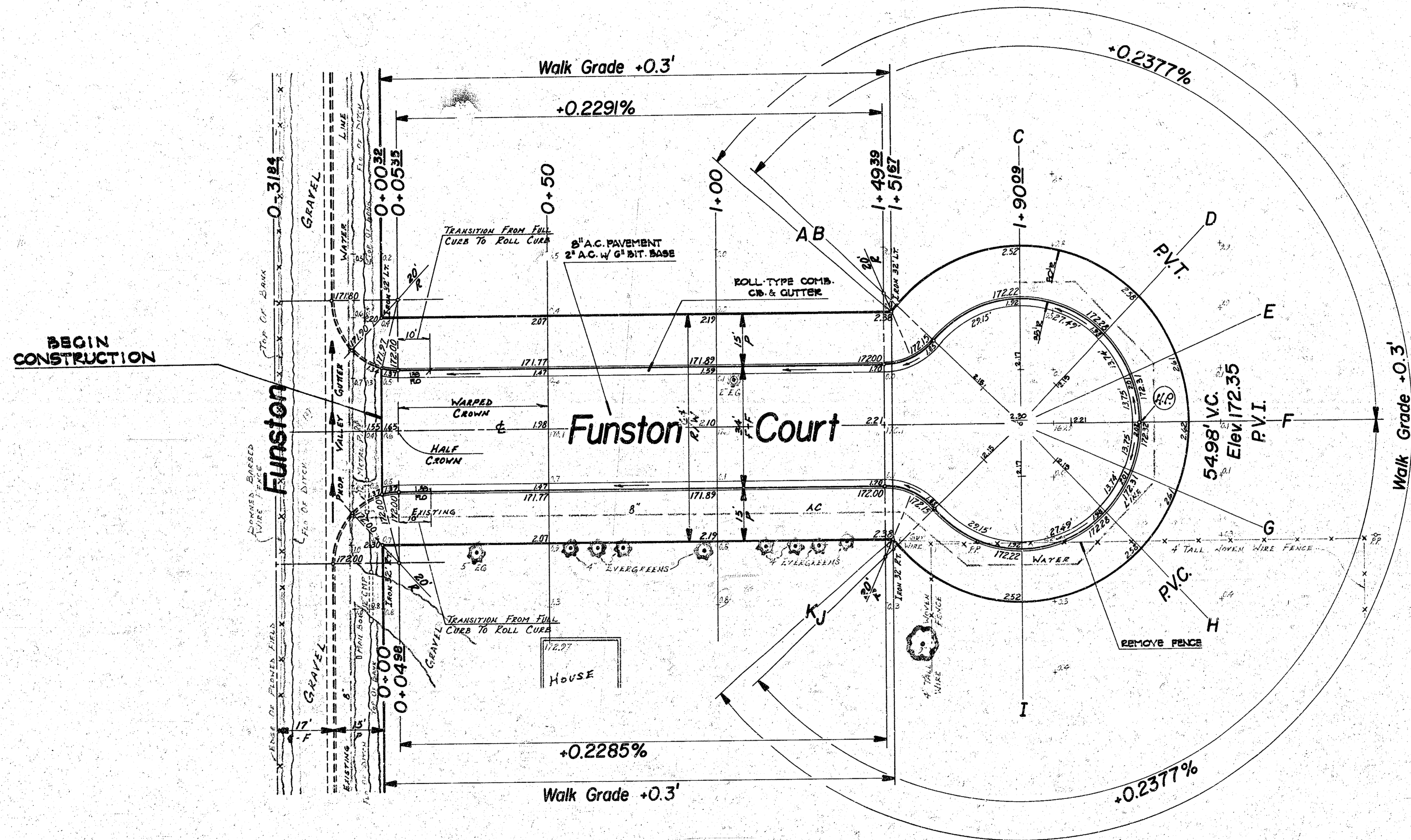
CITY OF WICHITA KANSAS
 DEPARTMENT of PUBLIC WORKS - Engineering
 Division
 Dean Sellers Acting CITY ENGINEER
 DATE _____ Proj. No. 472-76-245-80886-000-000-001

B-M

FILMED FROM THE BEST AVAILABLE COPY.....

Baseline Is Center Of Funston Court

B.M. 16948 R.R. Spk. On W-Face P Pole At NE Cor. Funston & Cypress



NOTE: NO DRIVES TO BE CONSTRUCTED THIS PROJECT.
NOTE: BORROW MATERIAL SHOULD BE SUCH THAT
NO CHEMICAL TREATMENT IS NECESSARY.

SURVEY DRAWN FROM B.M. 16948
PLAN BY K. J. HOWELL
ENG. BY K. J. HOWELL
CHECKED

Earthwork Property

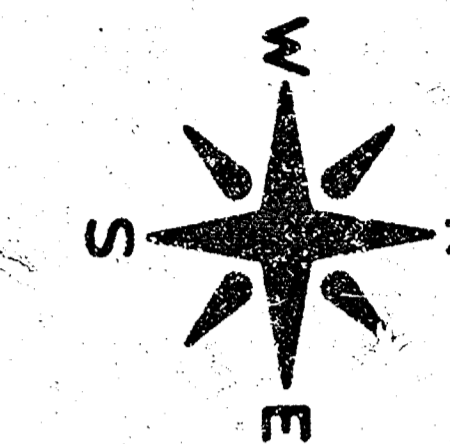
EXCAVATION	= 49.6 cy.	COMPACTED FILL	= 421.0 cy.	BORROW	= 1194.5 cy.
+ 10%	= 5.0 cy.	+ 10%	= 42.7 cy.	+ 10%	= 136.7 cy.
TOTAL	54.6 cy.	TOTAL	463.7 cy.	TOTAL	1331.2 cy.

SUB-GRADE
SUB-GRADE TREATMENT SHALL BE AS PER THE FIELD ENGINEER'S RECOMMENDATION. ALL SUB-GRADE TREATMENT SHALL BE IN ACCORDANCE WITH THE CITY OF WICHITA, KANSAS SPECIFICATIONS FOR SUB-GRADE TREATMENT. ALL SUB-GRADE TREATMENT SHALL BE IN ACCORDANCE WITH THE CITY OF WICHITA, KANSAS SPECIFICATIONS FOR SUB-GRADE TREATMENT.

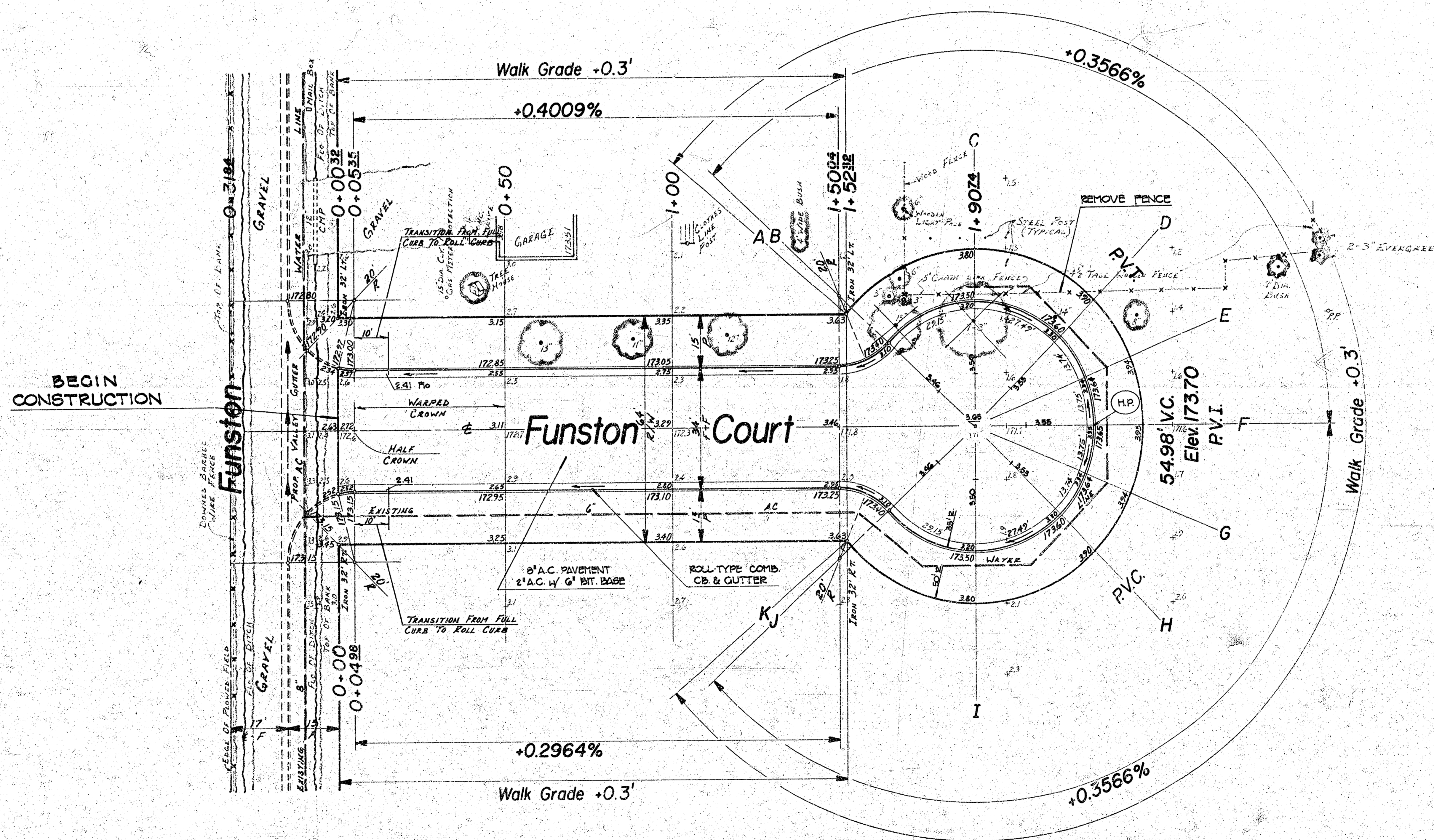
Funston Court
N.L. Funston - First Court
East Of Cypress
34' F-F With Comb. Curb & Gutter
City Of Wichita, Kansas
Dean Sellers City Engineer
Proj. No. 472 76 245 80886 000 000 001
Date: _____
Sheet 2 Of 5

Baseline Is Center Of Funston Court

B.M. 16948 R.R. Spk. On W-Face P.Pole At NE Cor. Funston & Cypress



Scale 1" = 20'



SURVEY ENGINEER BOOK 52 32
P.L.M. CENIGHELL
E.M. RICHMOND
CINCINNATI

~~SHR GRADE
UNGR. DT. LAYMENT SHAPE
TO BE DETERMINED BY
FIELD SURVEY
BY CONTRACTOR~~

Funston Court
N.L. Funston - First Court
West Of Beech
34' F-F With Comb. Curb & Gutter
City Of Wichita, Kansas
Dean Sellers City Engineer
Proj. No. 472 76 245 80886 000 000 001
Date: _____
Sheet 3 Of 5