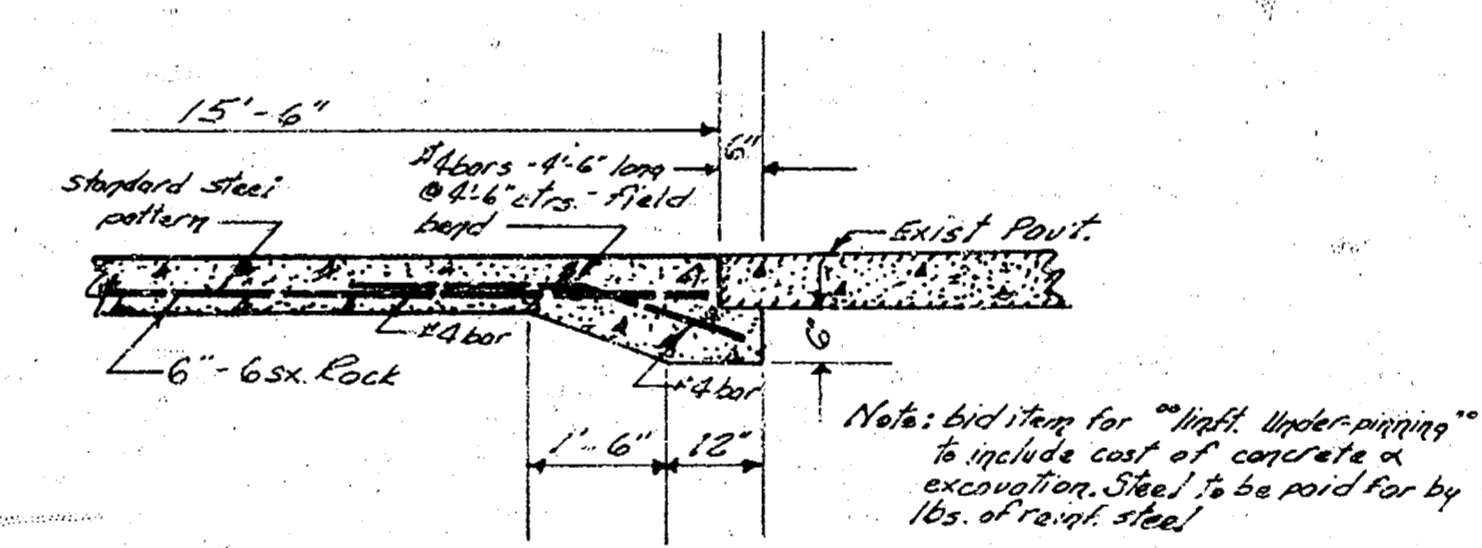
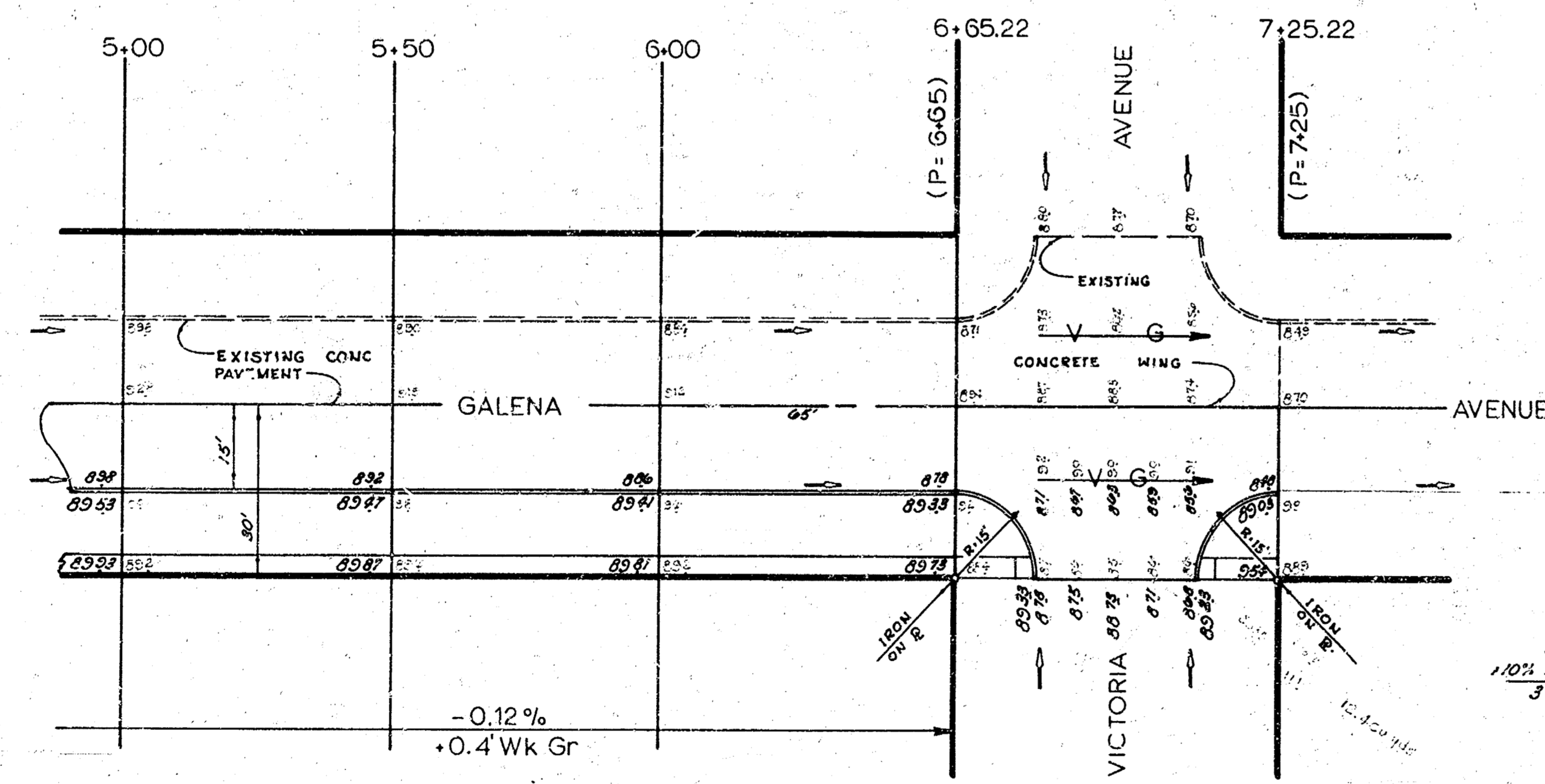
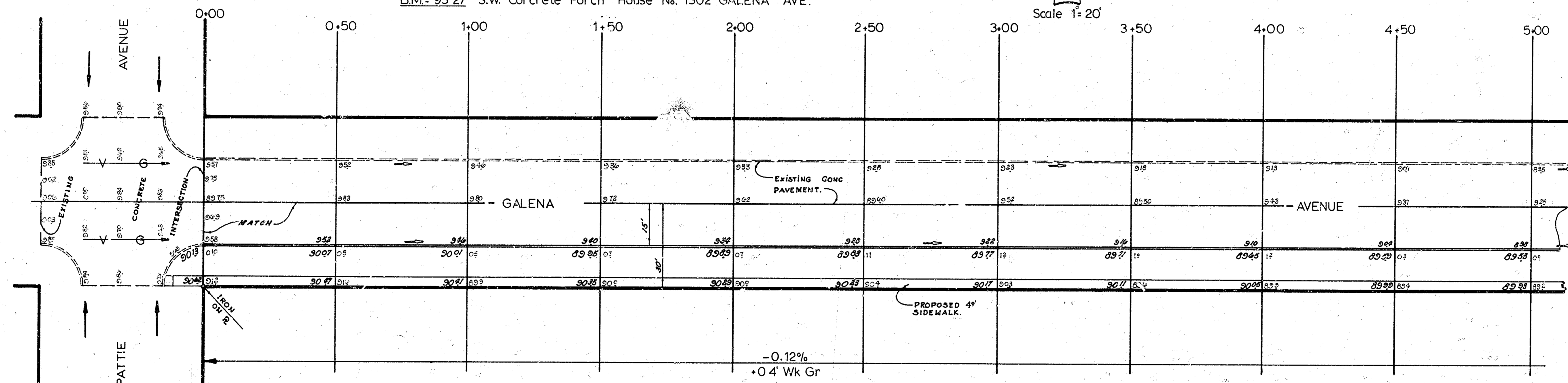
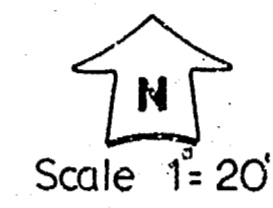


B.M. = 89.22 "P" in P.K.S. South Curb FORTUNA AVE 1' West W.L. VICTORIA AVE  
 B.M. = 89.41 N.W. Cor Concrete Porch North Side South City Baptist Church  
 S.E. Corner VICTORIA AVE and GALENA AVE.  
 B.M. = 93.27 S.W. Concrete Porch House No. 1302 GALENA AVE.



TYPICAL SLAB DETAIL  
no scale

EARTHWORK  
 CRIC -0.713%  
 ELEVATIONS - So. CURB & WEST END COL-DE-SAC

Property		City	
Excavation	Comp Fill	Excavation	Comp Fill
313.9 CU YDS	3.1 CU YDS	30.8 CU YDS	4.5 CU YDS
102.3	102.3	102.3	102.3
396.7 CU YDS	37.2 CU YDS	33.9 CU YDS	2.7 CU YDS
	1,000		30.0
	337.5 CU YDS		35.1 CU YDS

• SIDEWALK •  
 GRADE PARKING AND CLEAR RIGHT OF WAY FOR PROPOSED SIDEWALK. COMPACT BACKFILL IN SIDEWALK AREA. SIDEWALK BY OTHERS.



SOUTH 1/2 GALENA AVENUE.  
 E.L. Pattie Ave - E.L. Victoria Ave  
 CITY of WICHITA, KANSAS  
 15' 6" CONCRETE & CURB.  
 B E SMITH CITY ENGINEER  
 DATE March 1962 Project No C19-21

CIVIL ENGINEER  
 B.E. SMITH  
 1515 W. 10th St.  
 WICHITA, KANSAS