

B.M. 125.76 S.W. COR. CONC. PARCH. HO. #2560 S.E. GARLAND & 25TH
 B.M. 125.19 S.W. COR. CONC. PARCH. HO. #2502 GARLAND & 24TH

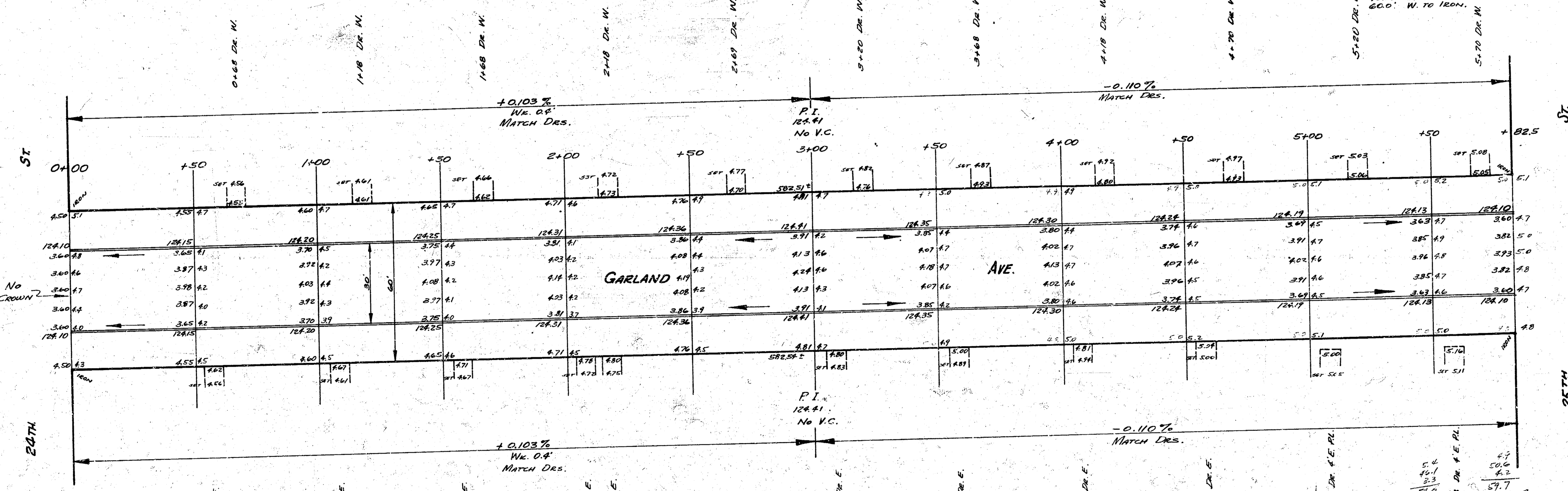
Exc. Prop. City
 757.5
 + 107.6
 865.1 w. vds.

TIES TO N.E. IRON:
 35.65' E.N.E. TO S.W. COR. HO.
 60.60' N.E. TO N.W. COR. HO.

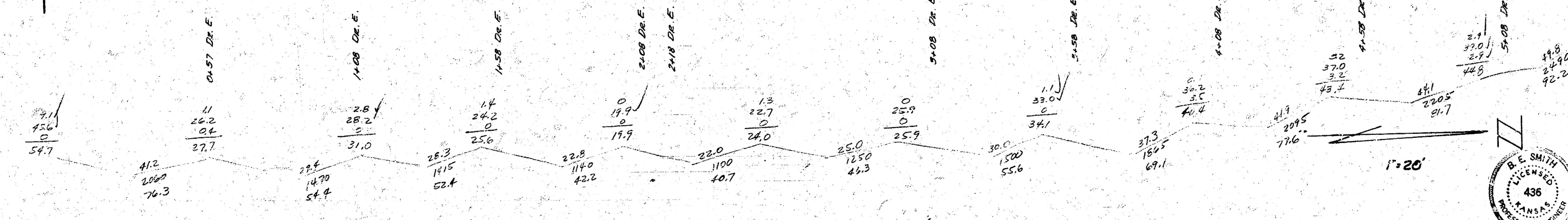
TIES TO S.E. IRON:
 29.37' S TO S.W. COR. DR.
 42.55' S.E. TO N.W. COR. HO.
 60.0' W TO IRON.

TIES TO N.E. IRON:
 35.65' E.N.E. TO S.W. COR. HO.
 60.60' N.E. TO N.W. COR. HO.

TIES TO S.E. IRON:
 29.37' S TO S.W. COR. DR.
 42.55' S.E. TO N.W. COR. HO.
 60.0' W TO IRON.



Survey
 Plan
 Exc.
 Checked



GARLAND AVENUE
 NL 24TH TO SL 25TH
 30' CONC. #CB.

CITY OF WICHITA, KANSAS
 B.E. SMITH CITY ENGINEER
 JAN. 15, 1933 Proj. No. C.12-183

