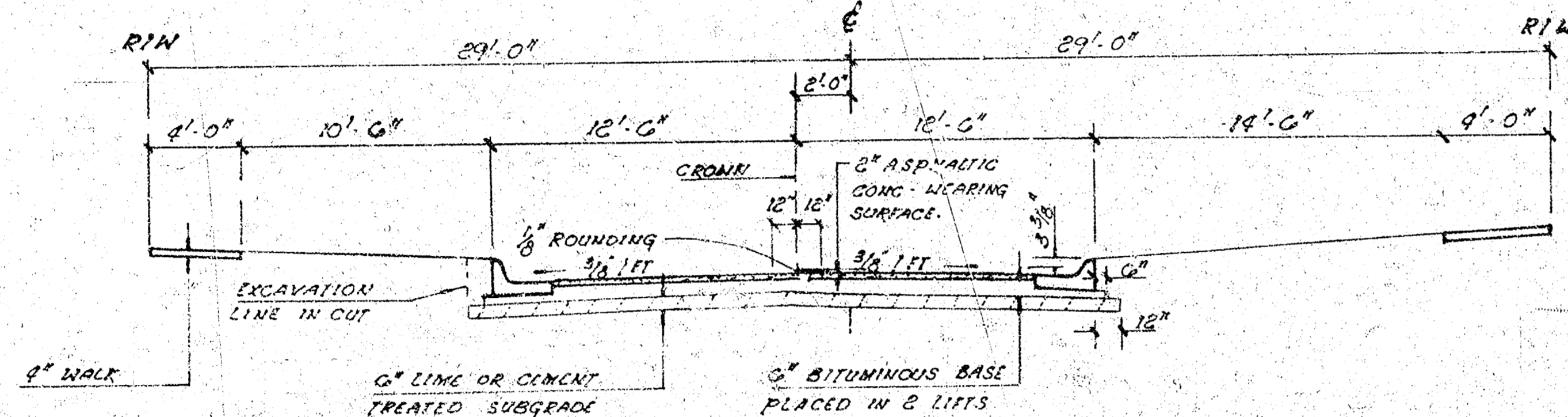
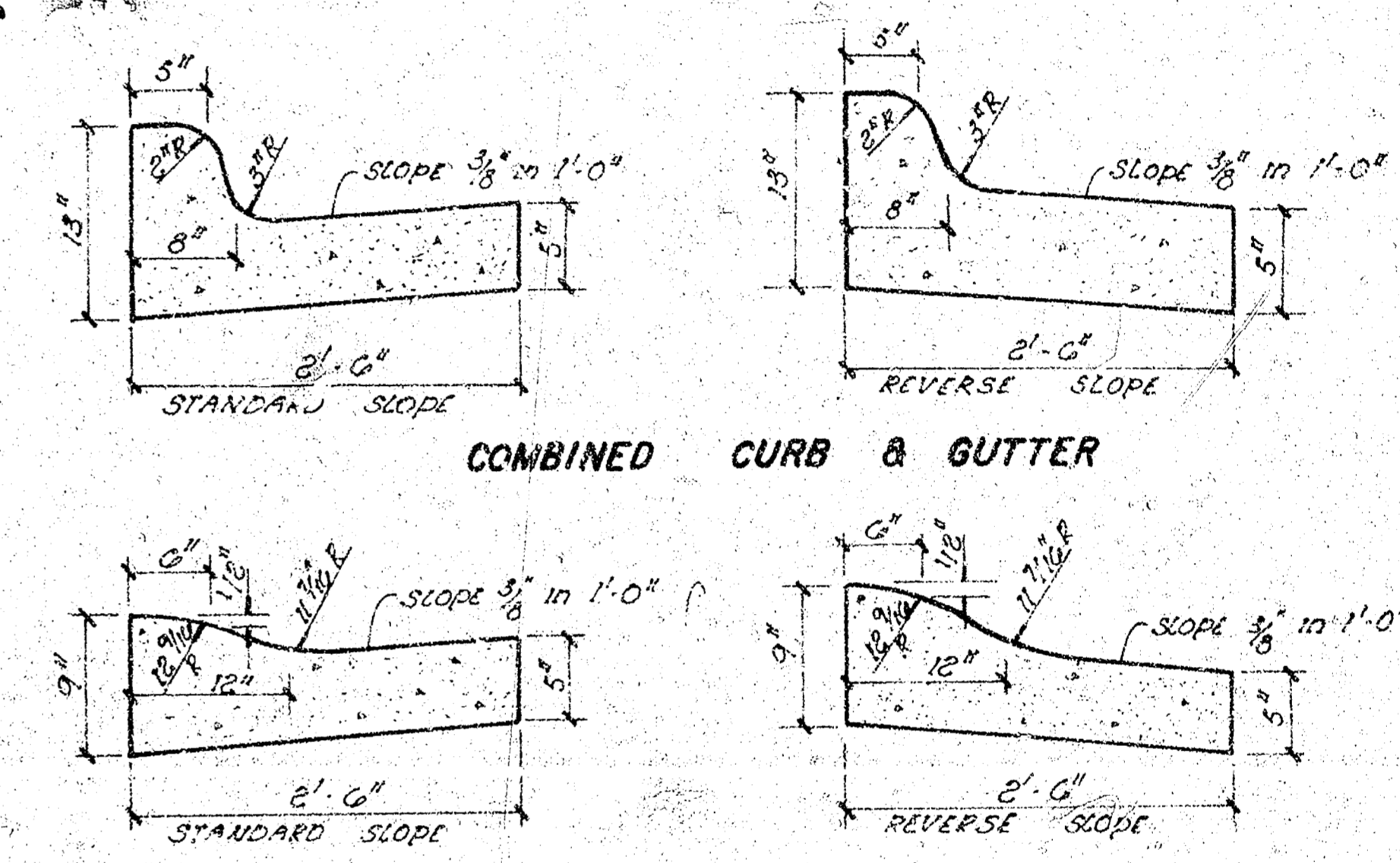


GATEWOOD COURT
E. L. GATEWOOD TO & INCL. CUL-DE-SAC

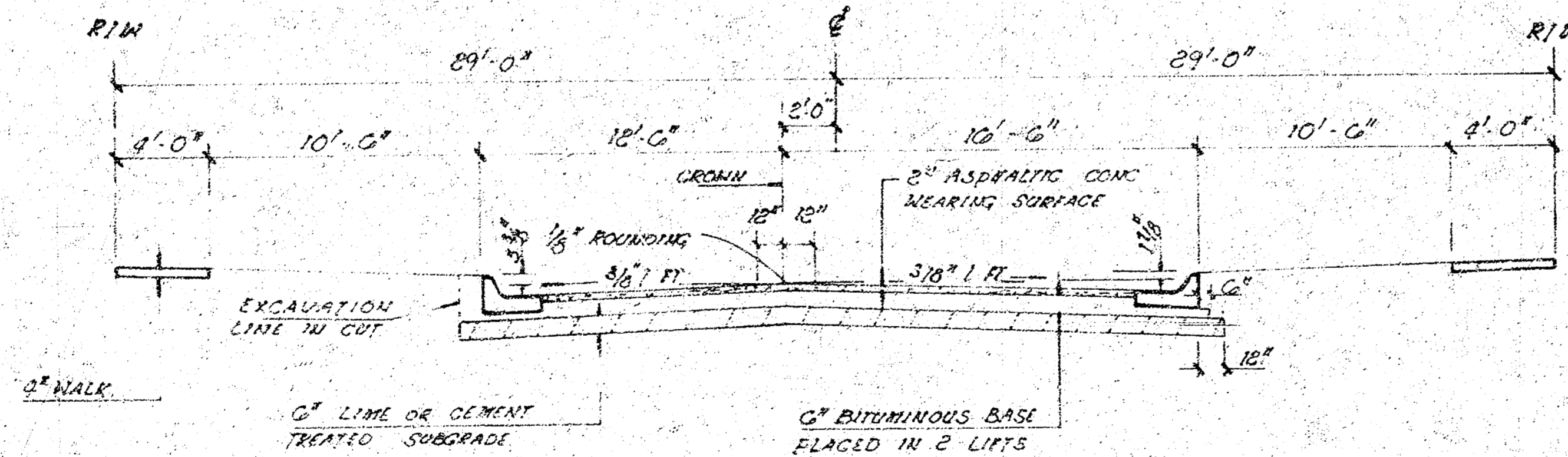


TYPICAL 25' B-B SECTION

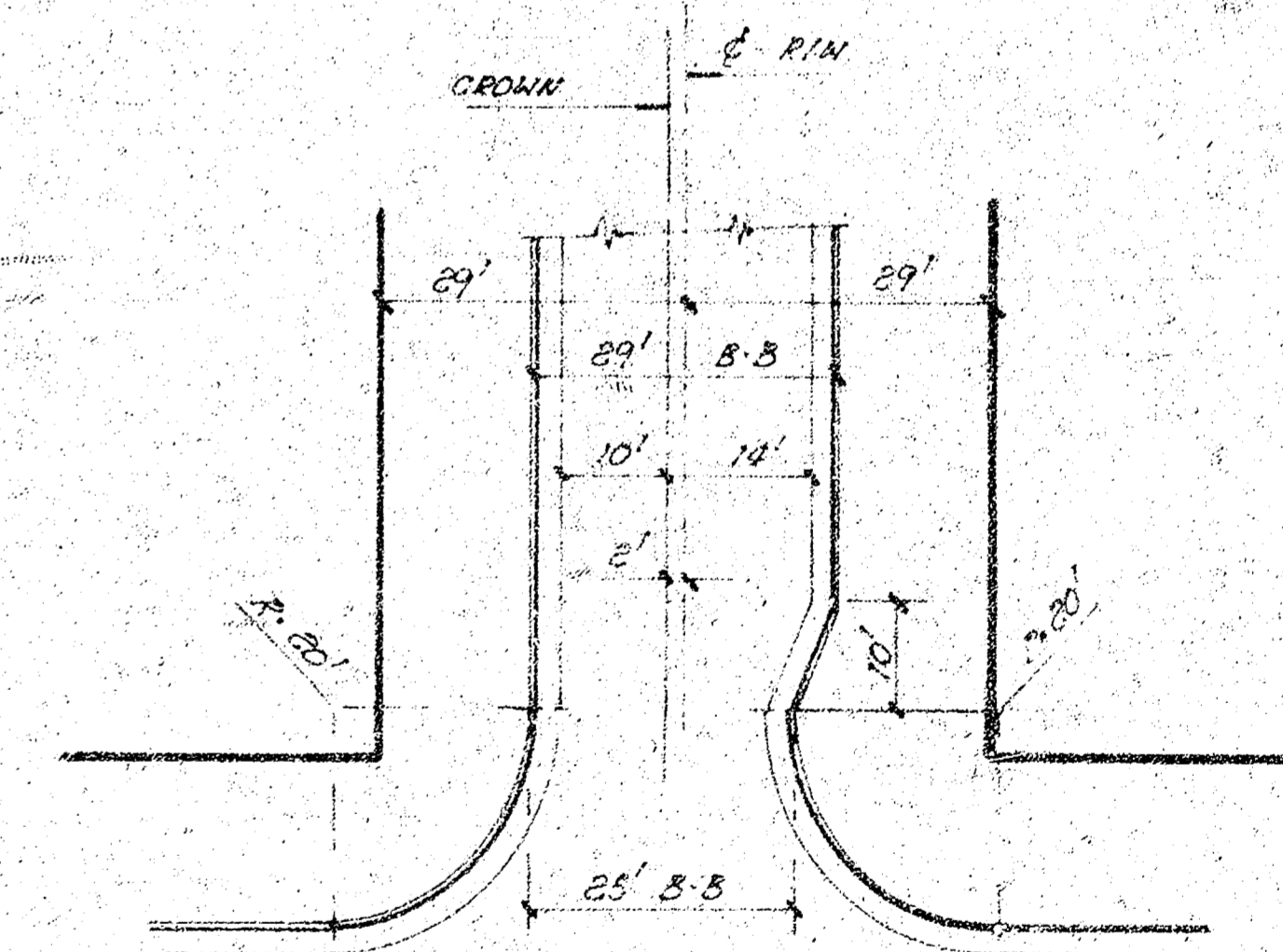


COMBINED CURB & GUTTER
ROLL TYPE CURB & GUTTER

TYPICAL RESIDENTAL SECTIONS
FOR CROWN OFFSET - 58' R/W



TYPICAL 29' B-B SECTION
w/ PARKING ON ONE SIDE



PLAN VIEW (TYPICAL)

GENERAL NOTES

1. A TACK COAT OF EMULSIFIED ASPHALT (SS + 1H) SHALL BE APPLIED AT AN APPROXIMATE RATE 0.05 GALLONS PER SQUARE YARD BETWEEN LIFTS OF ASPHALTIC MATERIALS WHEN ORDERED BY THE ENGINEER. TACK COAT WILL NOT BE PAID FOR DIRECTLY AND SHALL BE CONSIDERED AS SUBSIDIARY TO PRICE BID FOR ASPHALTIC PAVEMENT.
BITUMINOUS BASE AND ASPHALTIC CONCRETE WEARING SURFACE SHALL BE PLACED WITH A LAYDOWN MACHINE HAVING AUTOMATIC ELECTRONIC CONTROLS FOR CROWN AND GRADE. CONSTRUCTION JOINTS IN EACH LIFT SHALL BE STAGGERED A MINIMUM DISTANCE OF 1 FOOT WITH JOINTS IN PRECEDING LIFTS AND SUCH THAT A JOINT WILL BE CONSTRUCTED ON THE PAVEMENT CENTERLINE IN THE TOP LIFT.
2. THE A.C. PAVEMENT BETWEEN COMBINED CURB AND GUTTER SHALL BE PAID AS SQUARE YARDS 8" A.C. PAVEMENT (6" BITUMINOUS BASE). THE BITUMINOUS BASE UNDER THE COMBINED CURB AND GUTTER SHALL BE PAID AS SQUARE YARDS 3" BITUMINOUS BASE.
3. SIDEWALKS INDICATED ON THE TYPICAL SECTION ARE FOR LOCATION ON THAT SECTION. SIDEWALKS SHALL NOT BE CONSTRUCTED ON THIS PROJECT.
4. CONTRACTION JOINTS MAY BE CONSTRUCTED IN INTEGRAL CURB BY SAWING WITH AN APPROVED CONCRETE SAW. THE SAW SHALL EXTEND THROUGH THE CURB TO THE PAVEMENT. SAWED CONTRACTION JOINTS SHALL HAVE A MAXIMUM SPACING OF 10'.
5. INTEGRAL CURB SHALL BE TIED TO THE PAVEMENT BASE WITH SHORT DEFORMED DOWEL BARS SPACED AT 2' * 6" INTERVALS. THESE DOWEL BARS SHALL NOT BE LESS THAN 1/2" OR MORE THAN 3/4" IN DIAMETER.
6. TRANSITION CURB SHALL BE PAID AS ROLL-TYPE COMB. CURB AND GUTTER.



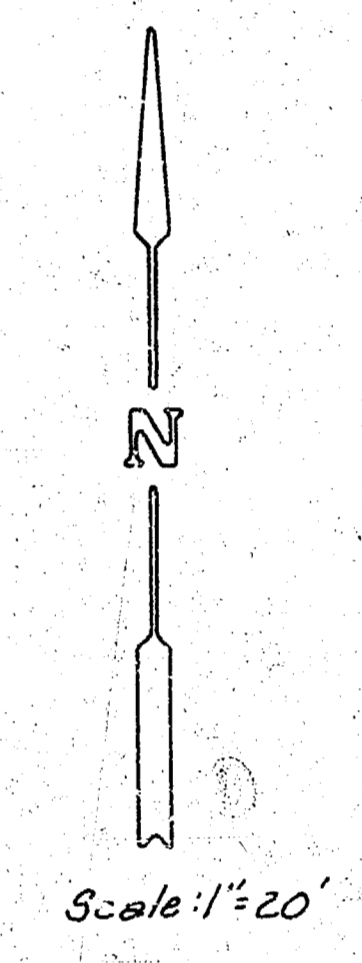
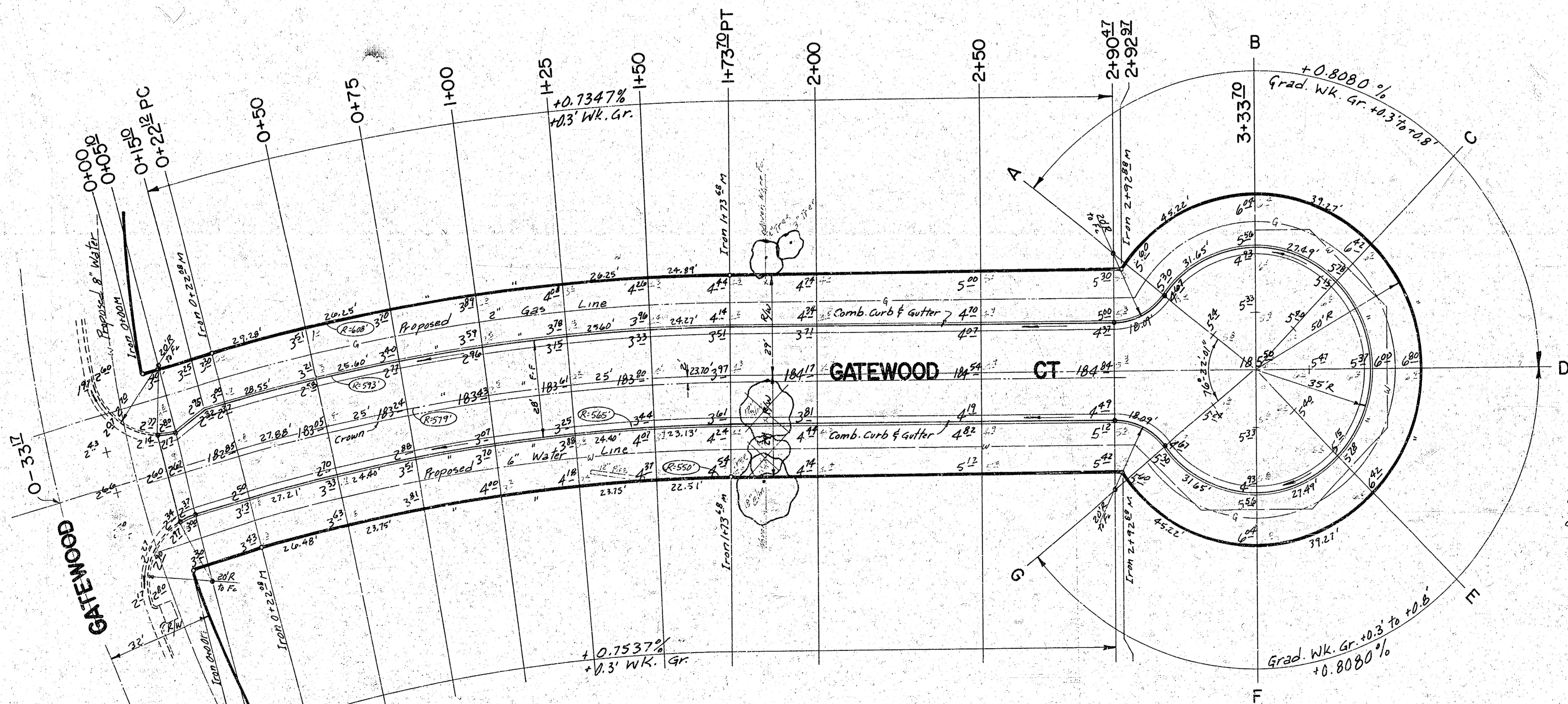
CITY OF WICHITA, KANSAS
DEPARTMENT OF PUBLIC WORKS - ENGINEERING
DEAN S. SELLERS ACTING CITY ENGINEER
DATE: _____ PROJ. No. 472 76 245 808/3000 000 001

1/4

BM = 187⁵² ~ City Std. West Parkway 1/4 Mile E. of Rock Road on 13th St.
 36 S. & 4' W. of 1/4 Sec. Corner
 BM = 186¹⁰ ~ RR Spike SE Fc. 14" Elm 30' N of N.L. Gatewood on
 W.L. Linden Extended Being 11 Fence N-S.

is E Street

Survey King
 Plan K/14
 Ex. K/15
 Check



Sub-Grade
 TYPE OF SUB-GRADE TREATMENT SHALL BE DETERMINED BY THE ENGINEER. SUB-GRADE TREATMENT MAY CONSIST OF LIME TREATMENT, CEMENT TREATMENT, SUB-GRADE ADJUSTMENT, OR ANY COMBINATION OF THESE.

Note: Trees to be removed are marked thus except that any tree marked for removal which in the opinion of the Engineer can be saved, shall be spared.

Contractor to contact utilities for location of underground lines.

Note: Not more than 9' 20' Drives or equivalent to be built and charged to this project.

Δ -15°00'00" = 579' L = 76.23' L = 151.58' LC = 151.15

CURVE DATA BASED ON $\theta = 75^{\circ}30'00''$

STA.	ARC	OFF SET	OFF N. CB.	DEFLECTION	DEFLECTION
0+22.12 PC					0°00'00"
0+50	27.88'	2.6.82'	28.74'	1°22'46"	1°22'46"
0+75	25'	2.4.05'	25.75'	1°14'13"	2°36'59"
1+00	"	"	"	"	3°51'02"
1+25	"	"	"	"	5°05'25"
1+50	25'	2.4.05'	25.95'	1°14'13"	6°19'38"
1+73.70 PT	23.70'	2.2.80'	24.00'	1°10'22"	7°30'00"

EARTHWORK

X-SECTIONS	EXCAVATION	COMP. FILL
10%	515.4 C.Y.	36.6 C.Y.
TOTAL	566.9 C.Y.	40.3 C.Y.

Manipulation = 1,484 S.Y.

GATEWOOD COURT
 E.L. GATEWOOD TO & INCLD. CUL-DE-SAC
 472 76 245 80813000 000 001