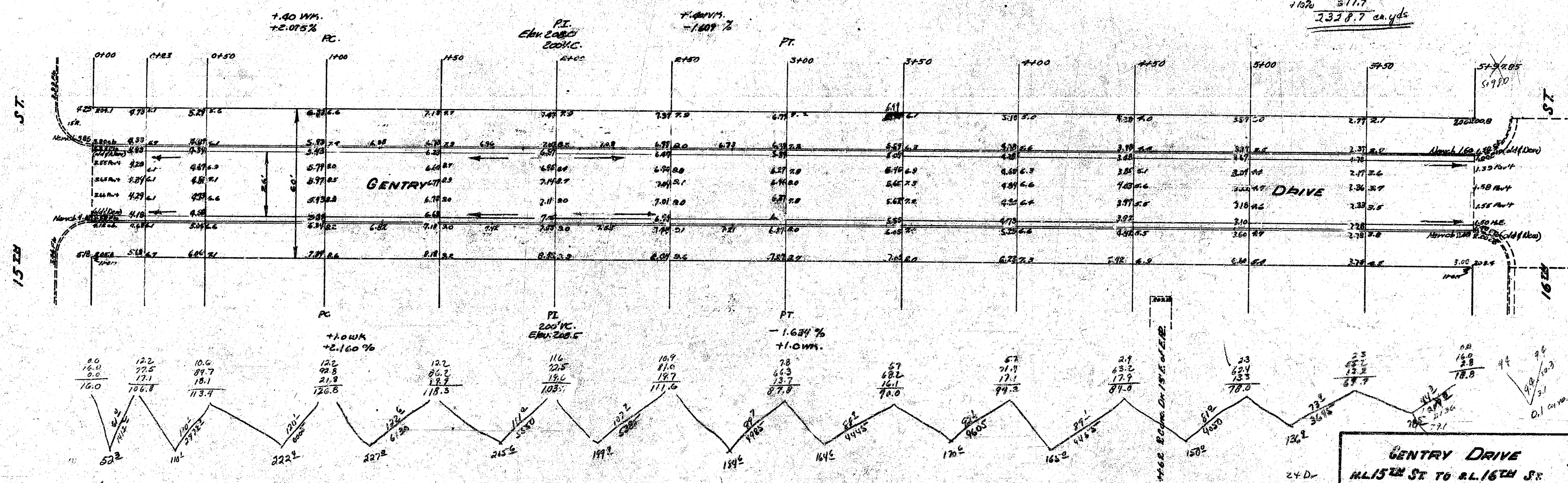
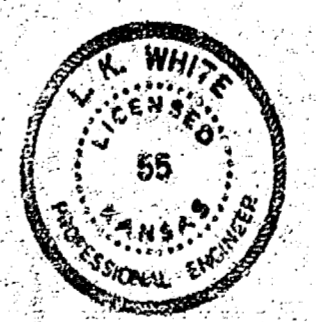


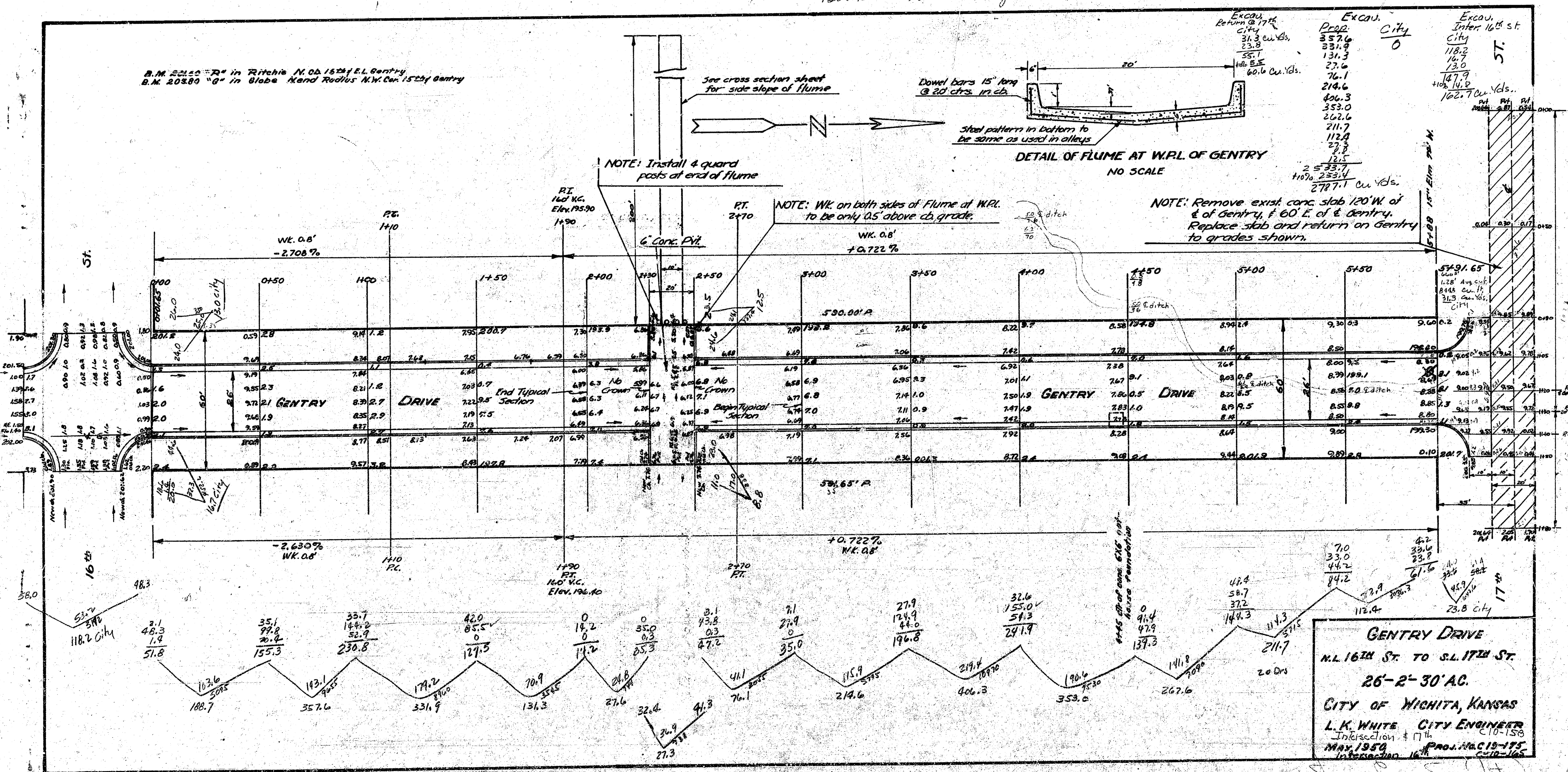
B.M. 203.80 "G" in Globe top of ab. N. end of Pav. N.W. Cor. 15th & Gentry

Excavation Property	City
52.3	0.0
110.1	
222.4	
277.0	
205.6	
188.9	
184.6	
170.6	
165.0	
150.0	
136.4	
78.5	
2117.0	
511.7	
2328.7 cu. yds.	



GENTRY DRIVE
 AL 15th ST TO S.L. 16th ST
 26'-2"-30' A.C.
 CITY OF WICHITA, KANSAS
 L.K. WHITE CITY ENGINEER
 JANUARY 20, 1951 PROJ. NO. C-1000





GENTRY DRIVE
 N.L. 16TH ST. TO S.L. 5TH ST.
 26-2-30 AC.
 CITY OF WICHITA, KANSAS
 L.K. WHITE CITY ENGINEER
 Intersection of 17th
 MAY 1959
 PROJ. NO. C15-175

Detail of cb
 200 C.F.T. cut
 200 1.24 3/16

PRINTS