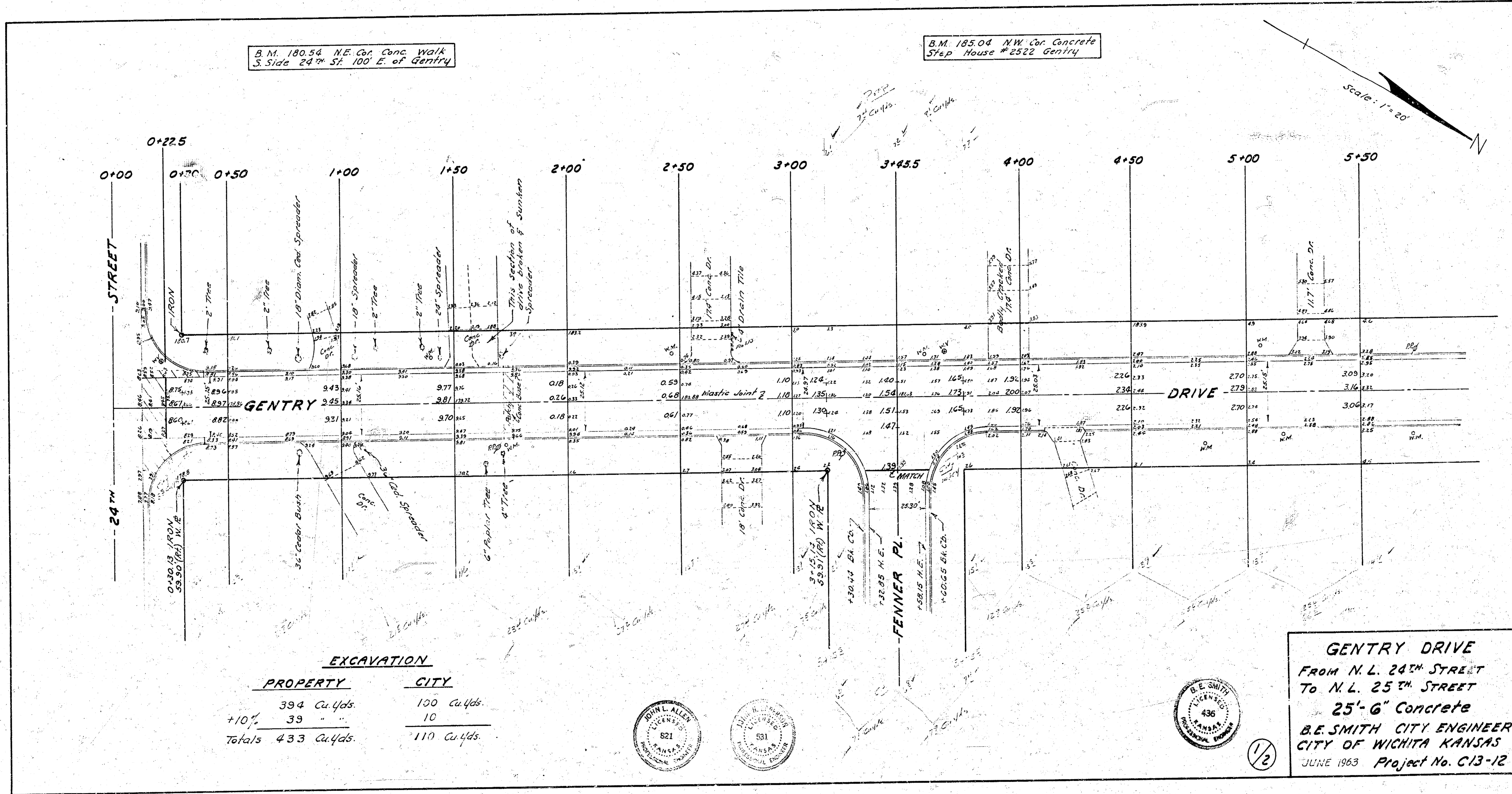


Survey J.L.C.
 E.A.
 Checked

B.M. 180.54 N.E. Cor. Conc. Walk
 3 Sides 24' W. 100' E. of Gentry

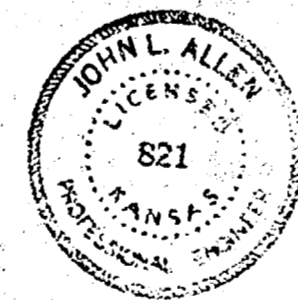
B.M. 185.04 N.W. Cor. Concrete
 Step House #2522 Gentry

Scale: 1" = 20'



EXCAVATION

PROPERTY	CITY
394 Cu.Yds.	100 Cu.Yds.
+10% 39	10
Totals 433 Cu.Yds.	110 Cu.Yds.

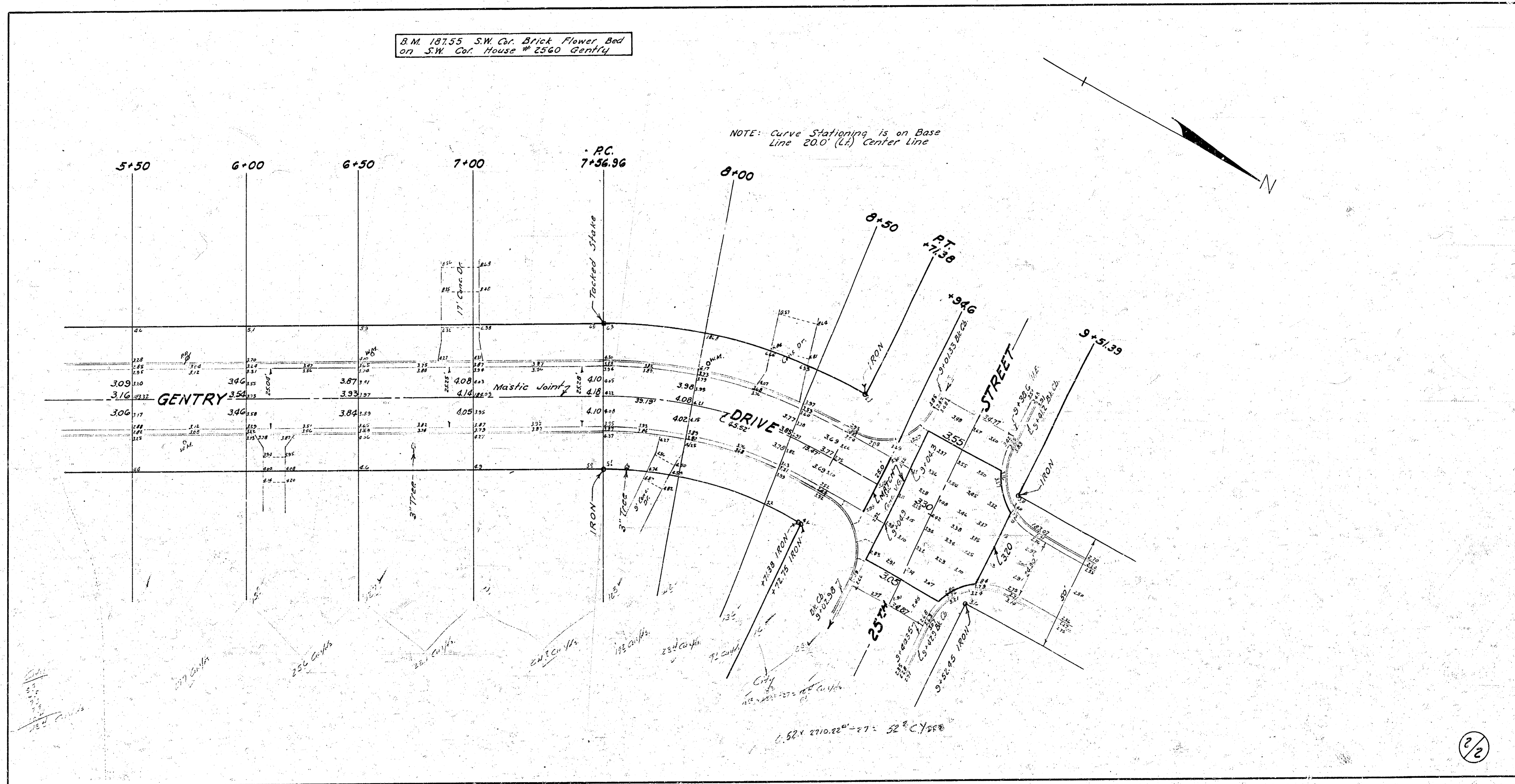
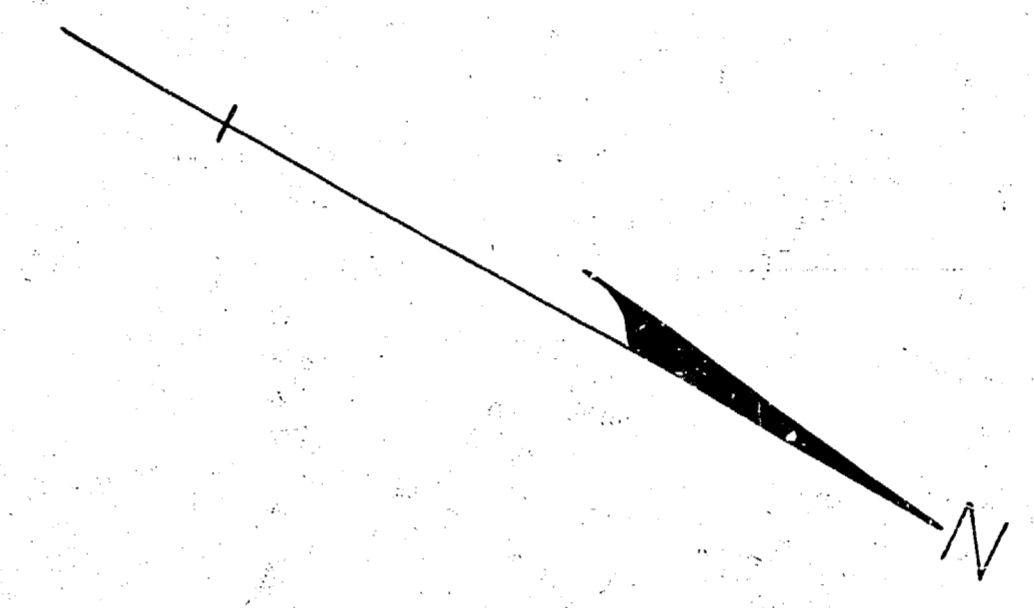


1/2

GENTRY DRIVE
 FROM N.L. 24TH STREET
 TO N.L. 25TH STREET
 25'-6" Concrete
B.E. SMITH CITY ENGINEER
 CITY OF WICHITA KANSAS
 JUNE 1963 Project No. C13-12

B.M. 18755 SW Cor. Brick Flower Bed
on SW Cor. House # 2560 Gentry

NOTE: Curve Stationing is on Base
Line 20.0' (L) Center Line



1.521 2710.22' - 271: 52' C.Y. 1988

2/2

10 12 5 4