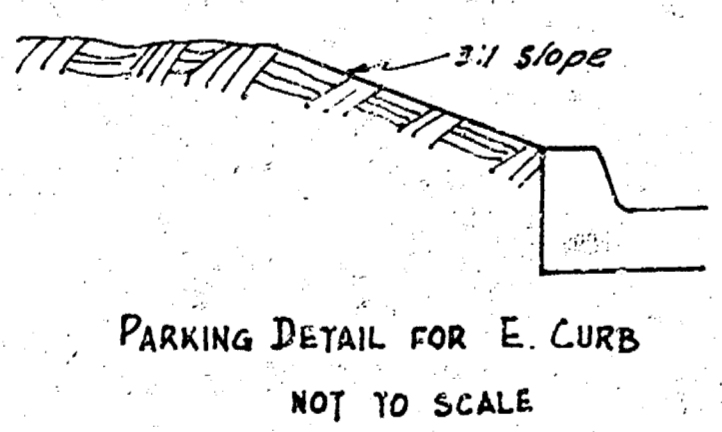
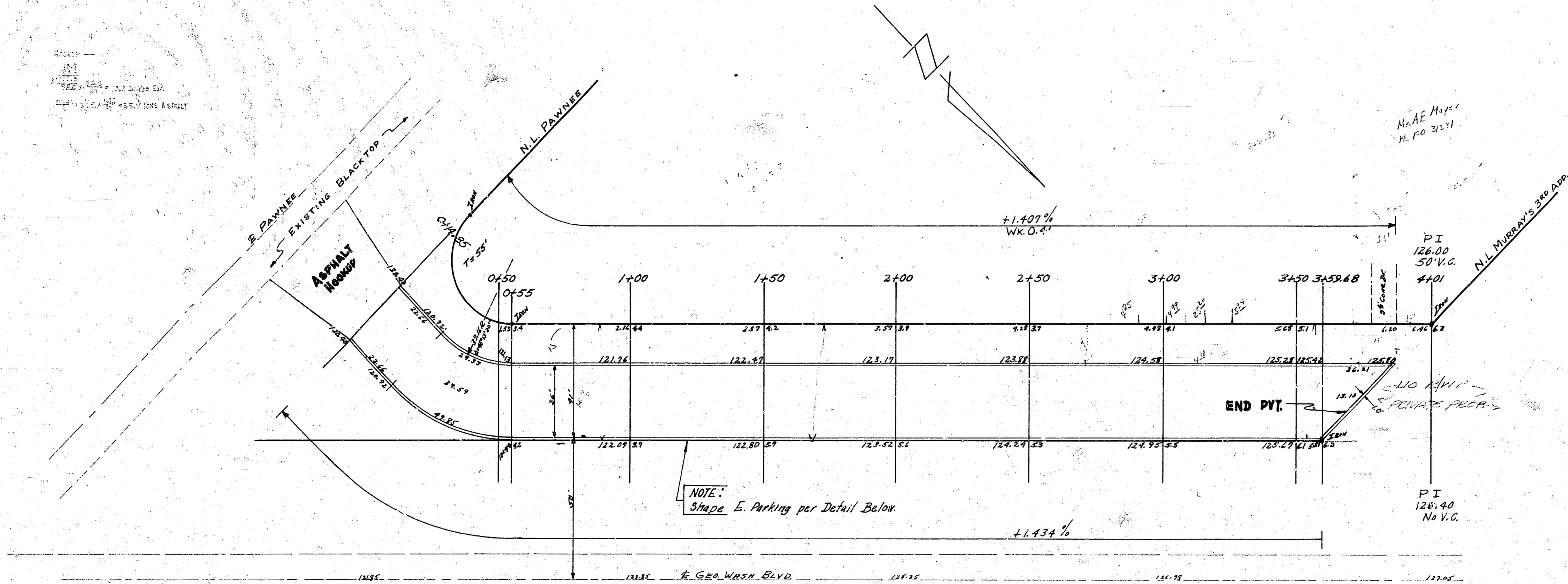


B.M. 119.94 "X" ON N.S. CONC. BRIDGE STR. LT. N.W. COR. WASH. BLVD & PAWNEE.  
 B.M. 116.14 "X" ON STA. CORNER CONC. CURB S.S. PAWNEE W.S. ROADWAY LANE.  
 BASE LINE & STATION WEST PROP. LINE GEO. WASH. DR.

Checked  
 Exc. AGZ  
 Checked



NOTE: TO FIELD ENG. THIS JOB TO BE CROSS SECTION UPON COMPLETION.

TOTAL PROP. EXCAV.  
 130.67  
 130.67  
 130.67



1/2

GEO. WASHINGTON DR. W.S.  
 N.L. PAWNEE TO N.L. MURRAY'S 3<sup>RD</sup> ADD.  
 26' CONC. & CB.  
 CITY OF WICHITA KAN.  
 BE. SMITH CITY ENGINEER  
 AUG. 1955 Proj. No. C14-198