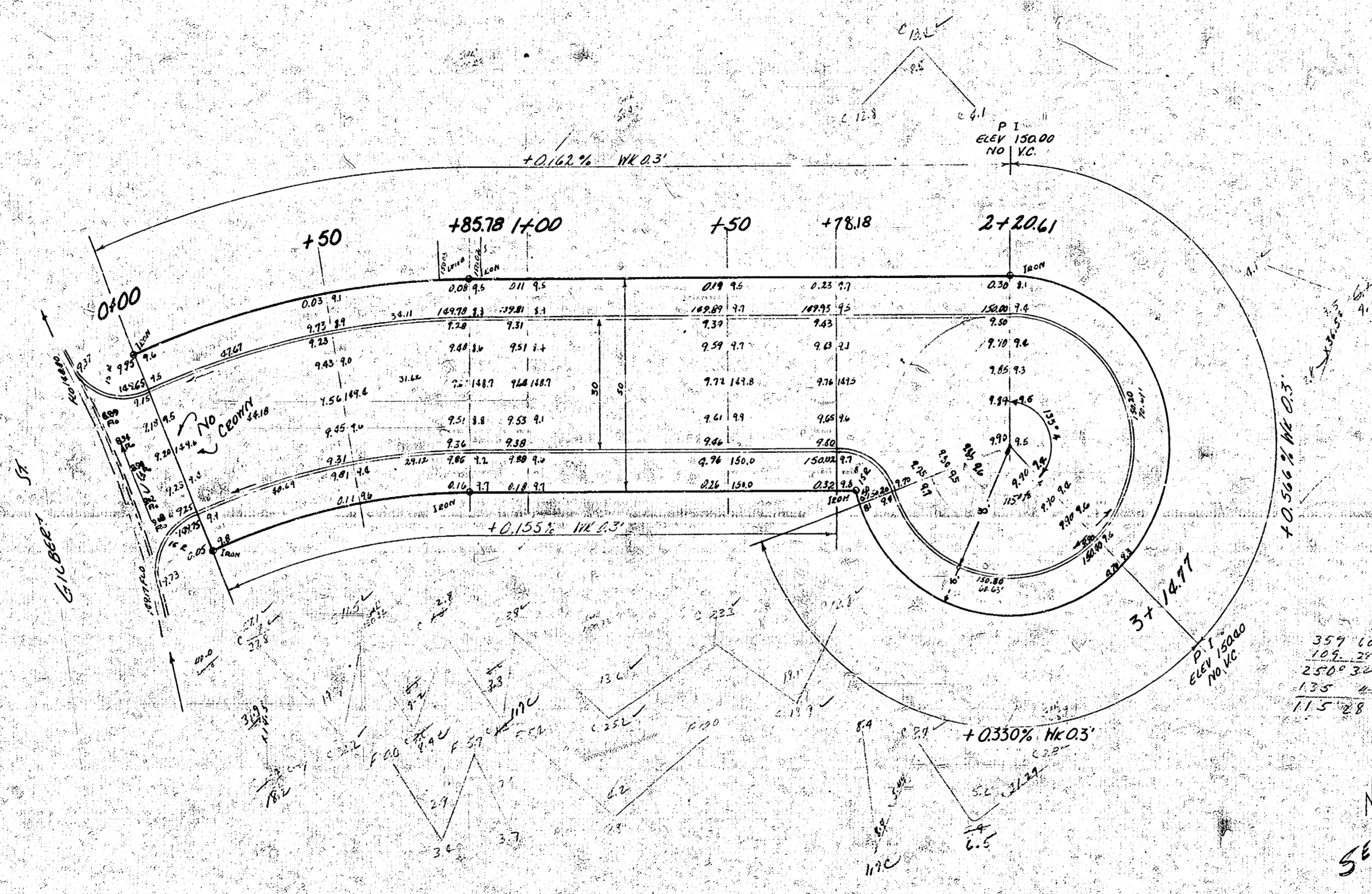
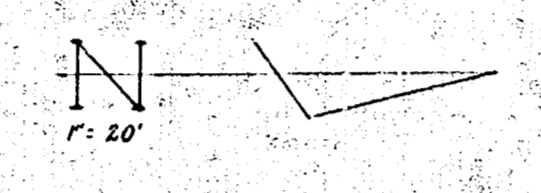


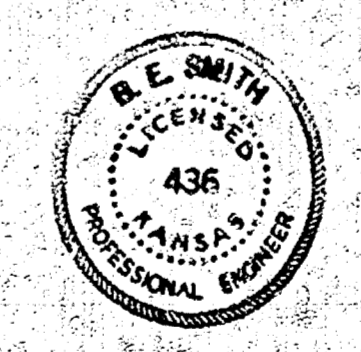
BM 152.25 11' in. Above First Floor NE Cor. East No. 5' Elev. about  
 BM 152.75 5'6" Cor. Conc. Pylon #3010 Concrete Corner  
 STA ON N 12



115.462 x 15.5 = 31.29  
 135.462 x 15.5 = 36.21  
 19.462 x 16.0 = 5.89  
 52.252 x 16.0 = 5.89

NOTE  
 SEE DET. SECT.  
 FOR EX.

Curve Data from Sta 0+00 to 85.78				
Sta	Chord Length	Chord Bearing	Angle	Radius
0+00	98.96	59.19	6°-40'-10"	6°-40'-10"
+85.78	55.07	28.08	6°-40'-20"	11°-26'-30"



GILBERT COURT  
 GILBERT NORTH  
 30' CONC & CB  
 CITY OF WICHITA KANSAS  
 B. E. SMITH City Engineer  
 March 1935 Proj. No. C-15-5