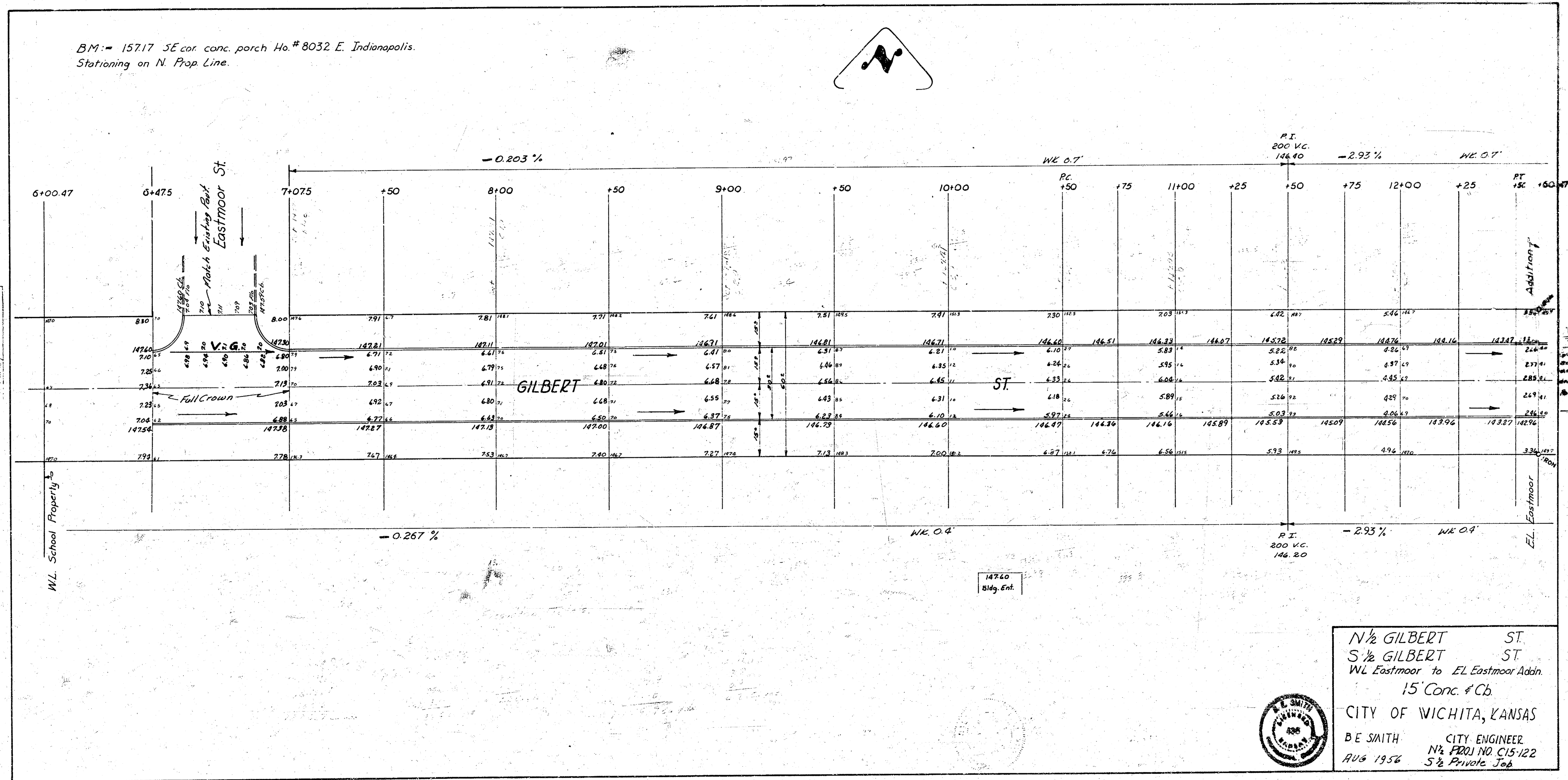


BM: = 157.17 SE cor. conc. porch Ho. #8032 E. Indianapolis.  
 Stationing on N. Prop Line.



Young  
 G. H. Young  
 1944

W.L. School Property

147.60  
 Bldg. Ent.

N 1/2 GILBERT ST.  
 S 1/2 GILBERT ST.  
 W.L. Eastmoor to EL Eastmoor Adm.  
 15' Conc. & Cb.  
 CITY OF WICHITA, KANSAS  
 D.E. SMITH CITY ENGINEER  
 N 1/2 PROJ. NO. C15-122  
 AUG 1956 S 1/2 Private Job

