

Book = MCG 2

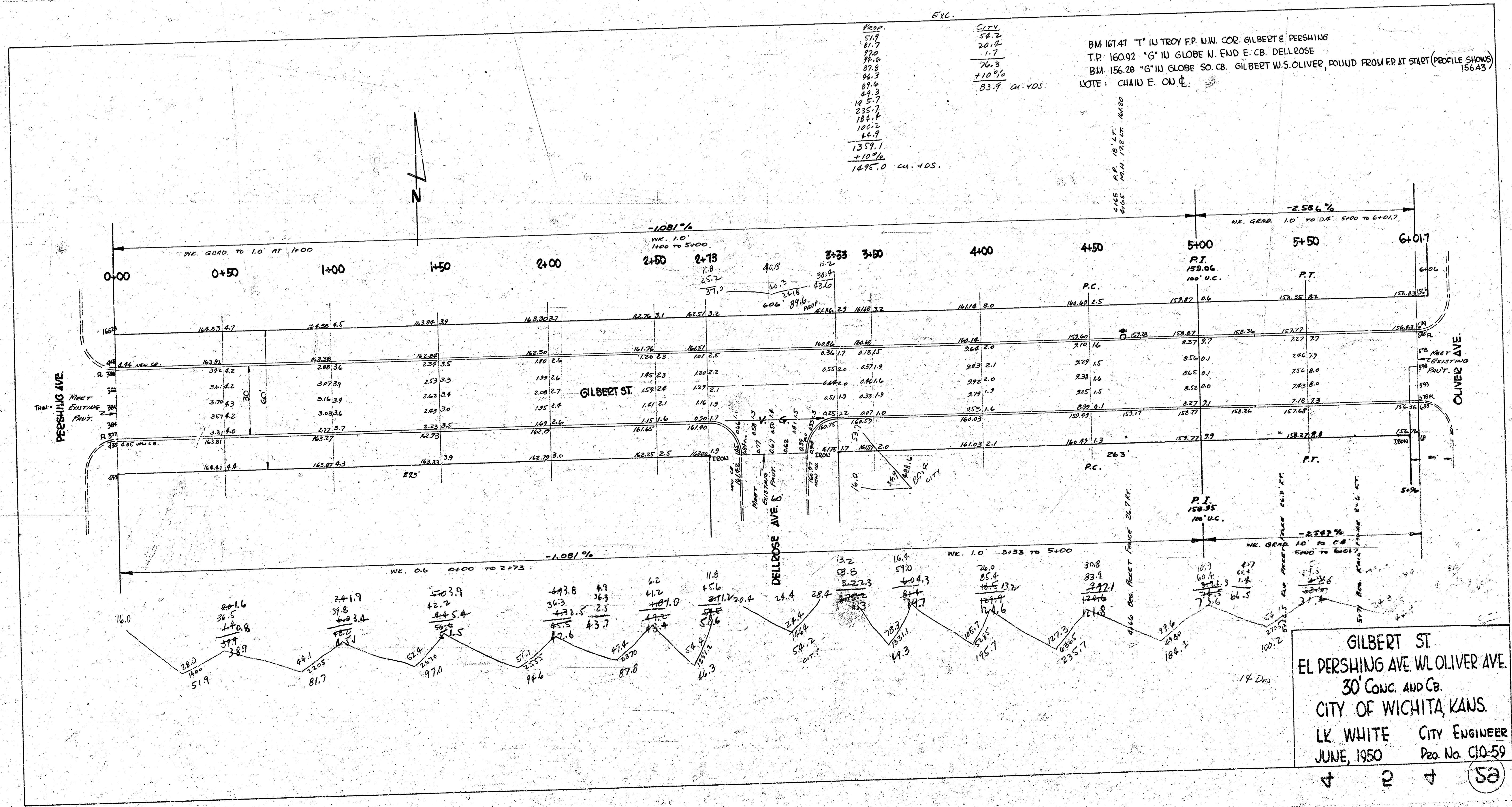
ETC.

Prop.	51.7
	81.7
	70.0
	76.0
	87.8
	94.3
	89.6
	69.3
	105.7
	235.7
	186.4
	100.2
	14.8
	1357.1
	+10.7%
	1495.0

City	58.2
	20.6
	1.7
	76.3
	+10.7%
	83.7

BM 16147 "T" IN TROY FR. W.J. COR. GILBERT & PERSHING
 T.P. 16092 "G" IN GLOBE N. END E. CB. DELLROSE
 BM 15628 "G" IN GLOBE SO. CB. GILBERT W.S. OLIVER, FOUND FROM FR. AT START (PROFILE SHOWS)
 15643

NOTE: CHAIN E. OLD E.



14 DWS

2

50