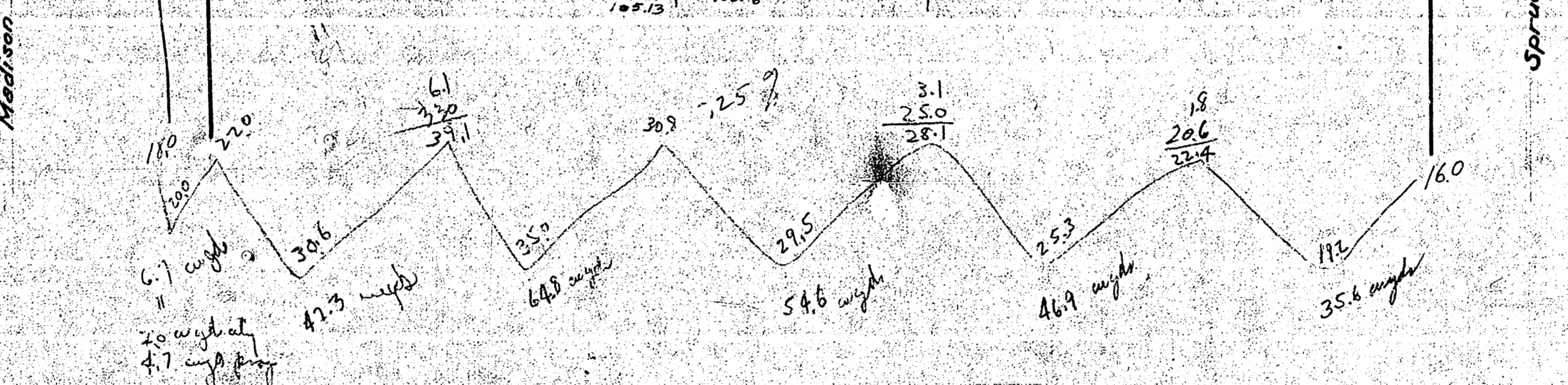
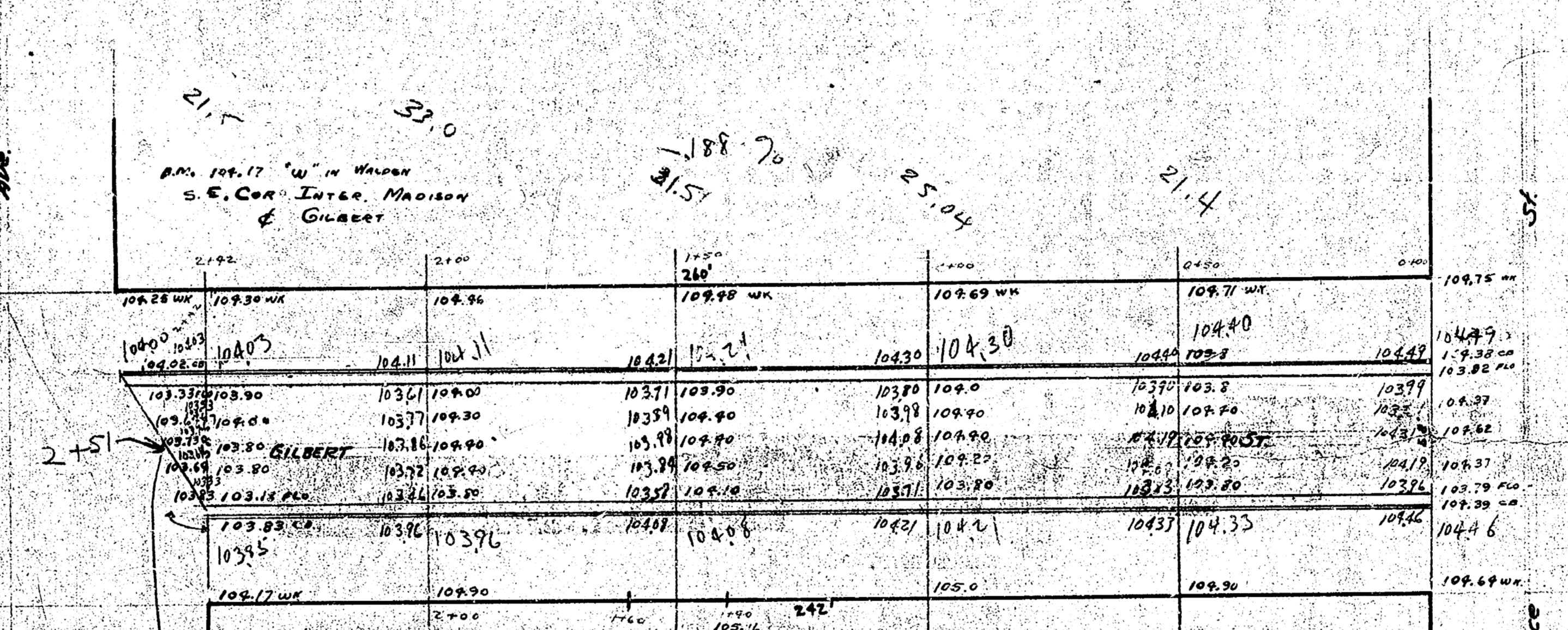


26-2-30 Cong.

21.7 53.0
P.M. 104.17 "W" in Station
S.E. Cor. Luce, Masonry
& Cement

188.70
25.04
21.4



$$\text{Prog.} = 253.9 + 254 = 279.3 \text{ angle}$$

$$\text{Ck} = 20 + 02 = 22$$

$$281.5$$

Survey Plan
 1935
 Gilbert St.
 E. Madison
 to
 W. Spruce