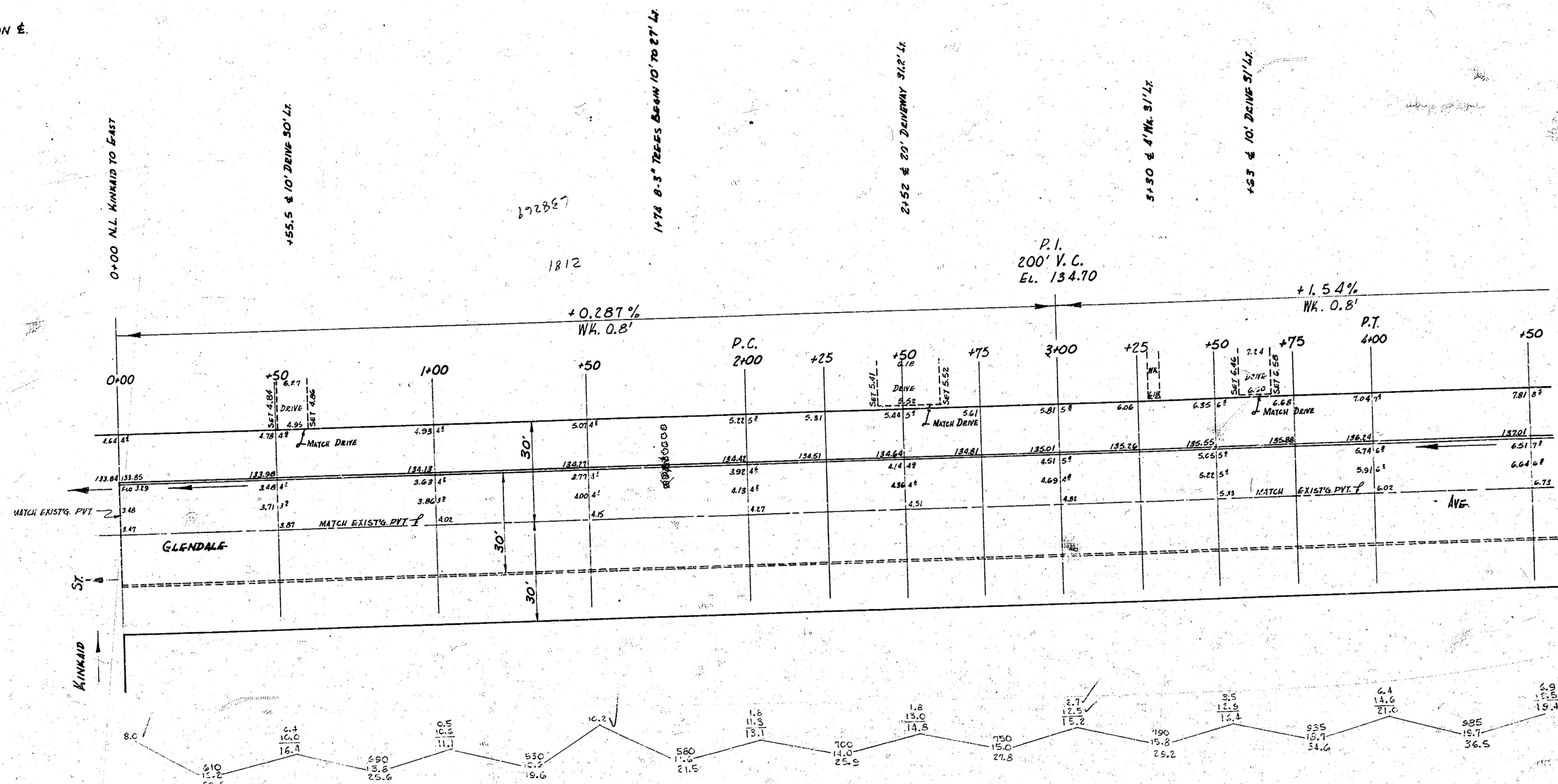


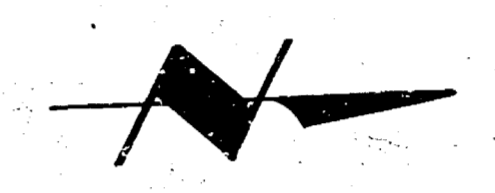
B.M. 134.30 Top Co. E.S. GLENDALE JUST S. OF CATCH BASIN @ N.L. KINKAID.

E. X. CAV.  
Feet: 248.3 Cu.Ys. City: 0 Cu.Ys.

CHAIN N. ON E.



Surveyed by  
L. J. JEZ  
Checked by  
C. H. SMITH



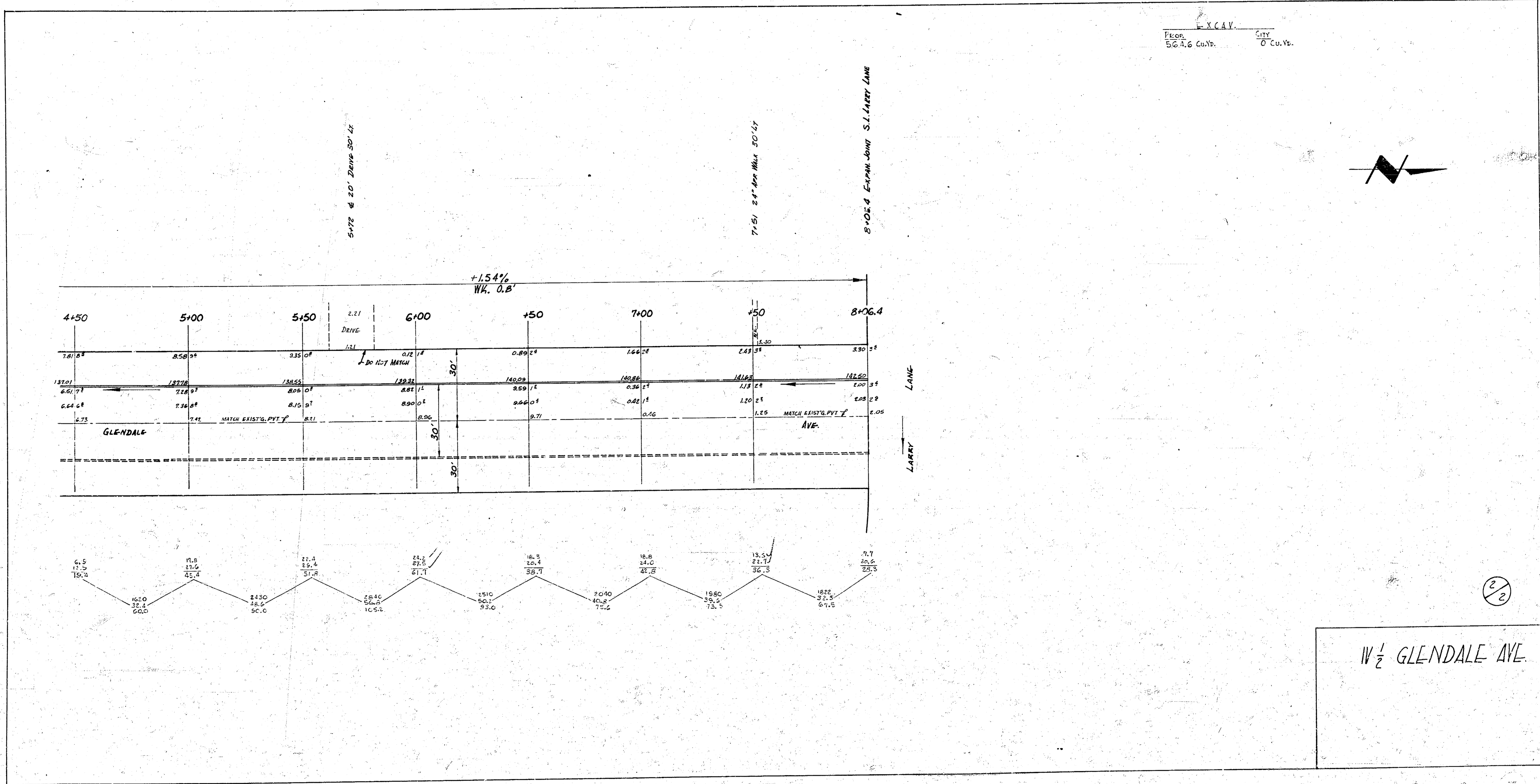
W 1/2 GLENDALE AVE.  
N.L. KINKAID - S.L. LARREY LANE  
15' CONC. & C.B. W.S.  
CITY OF WICHITA, KANS.  
B.E. SMITH CITY ENGINEER  
APRIL, 1954 PROJ. NO. C14-B



TOTAL EXCAV.  
Feet: 507.5 City: 0 Cu.Ys.  
+10% 558.3 Cu.Ys.

1/2

EXCAV.  
 From 56.16 Cu.Yd. City 0 Cu.Yd.



IV 1/2 GLENDALE AVE.