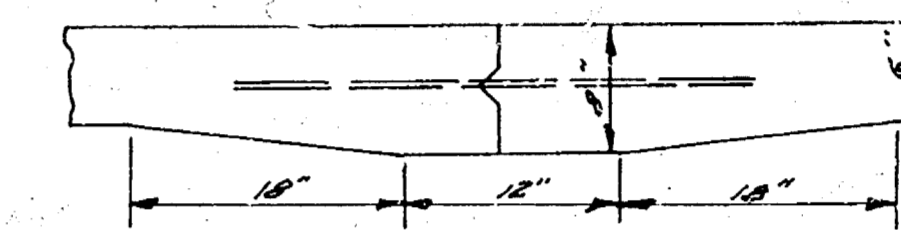
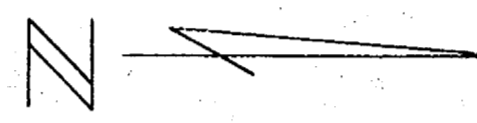
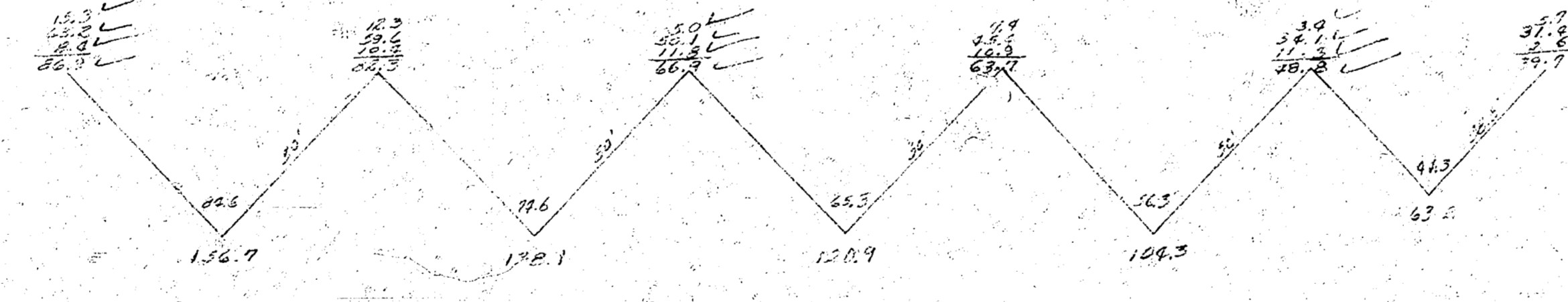
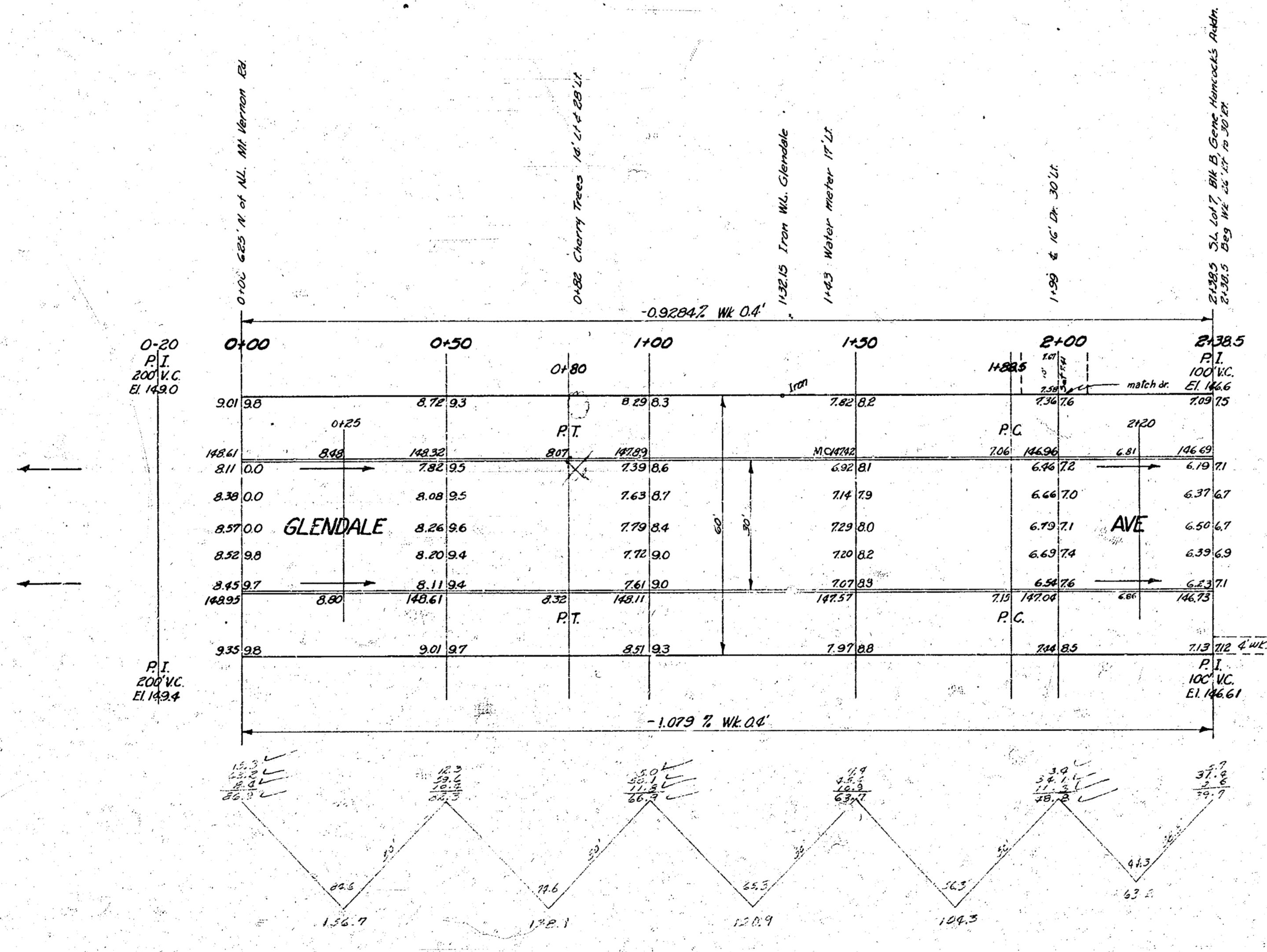


B.M. 146.01 6" in Globe, top W cb, end rod on Glendale near N.L. Funston W.
 Stationing on \pm



Use 1/2" # Bars, 3' long, on 2'-6" Ctrs.
 Mastic Joint Detail



Excavation
 CUT 543.2
 14.6% 52.3
 7.4% 441.5 cu yd



GLENDALE AVE
 625' N of N.L. MT. VERNON RD TO
 S.L. LOT 7, BLK. B, GENE HANCOCK'S ADDN.
 30' CONC. & CO.
 CITY OF WICHITA KANSAS
 B.E. SMITH CITY ENGINEER
 MARCH, 1954 PROJ. No. C13-120