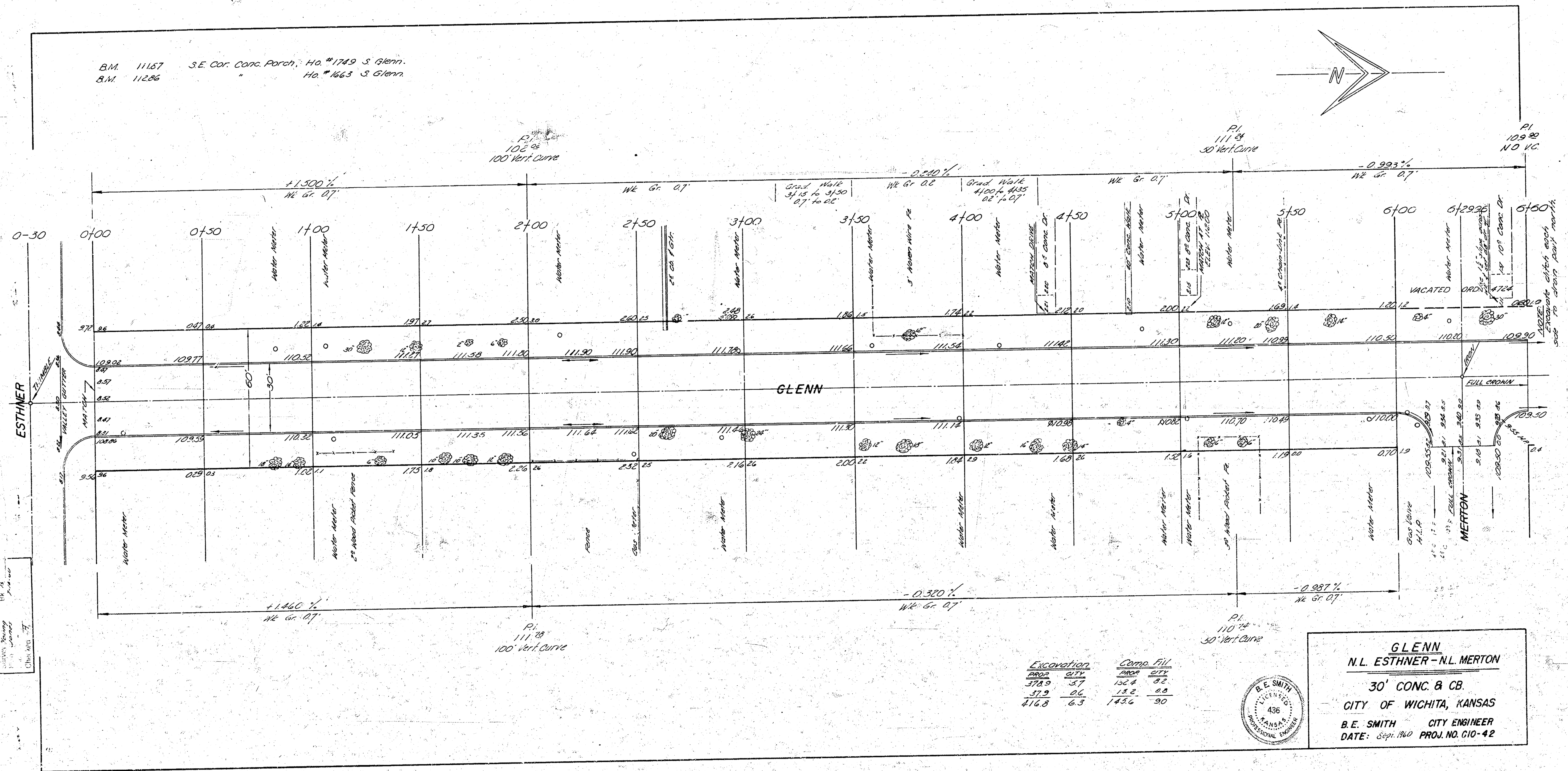
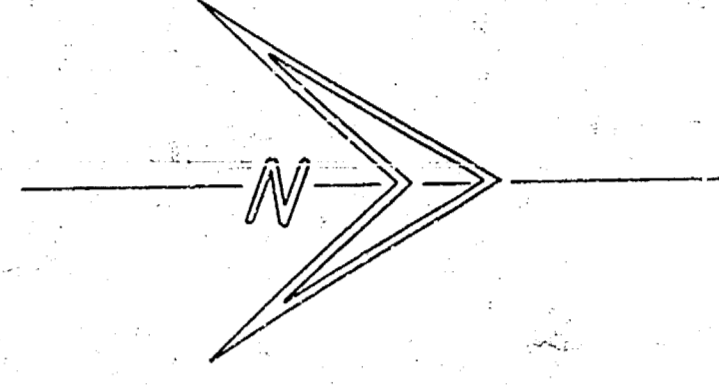
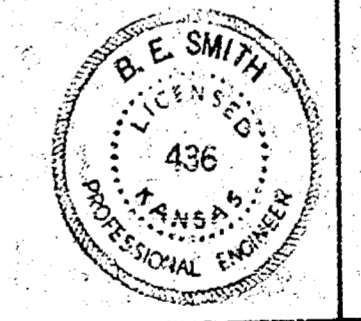


B.M. 11187 S.E. Cor. Corp. Porch, Ho. #1749 S Glenn.
 B.M. 11286 " " " " Ho. #1663 S Glenn.



ESTHNER
 30' CONC. & CB
 111.28
 100' Vert. Curve

Excavation	Comp. Fill
290.0	227.0
578.0	102.0
37.0	13.0
276.8	6.3
	143.6
	90



GLENN
 N.L. ESTHNER - N.L. MERTON
 30' CONC. & CB.
 CITY OF WICHITA, KANSAS
 B.E. SMITH CITY ENGINEER
 DATE: Sept. 1940 PROJ. NO. C10-42