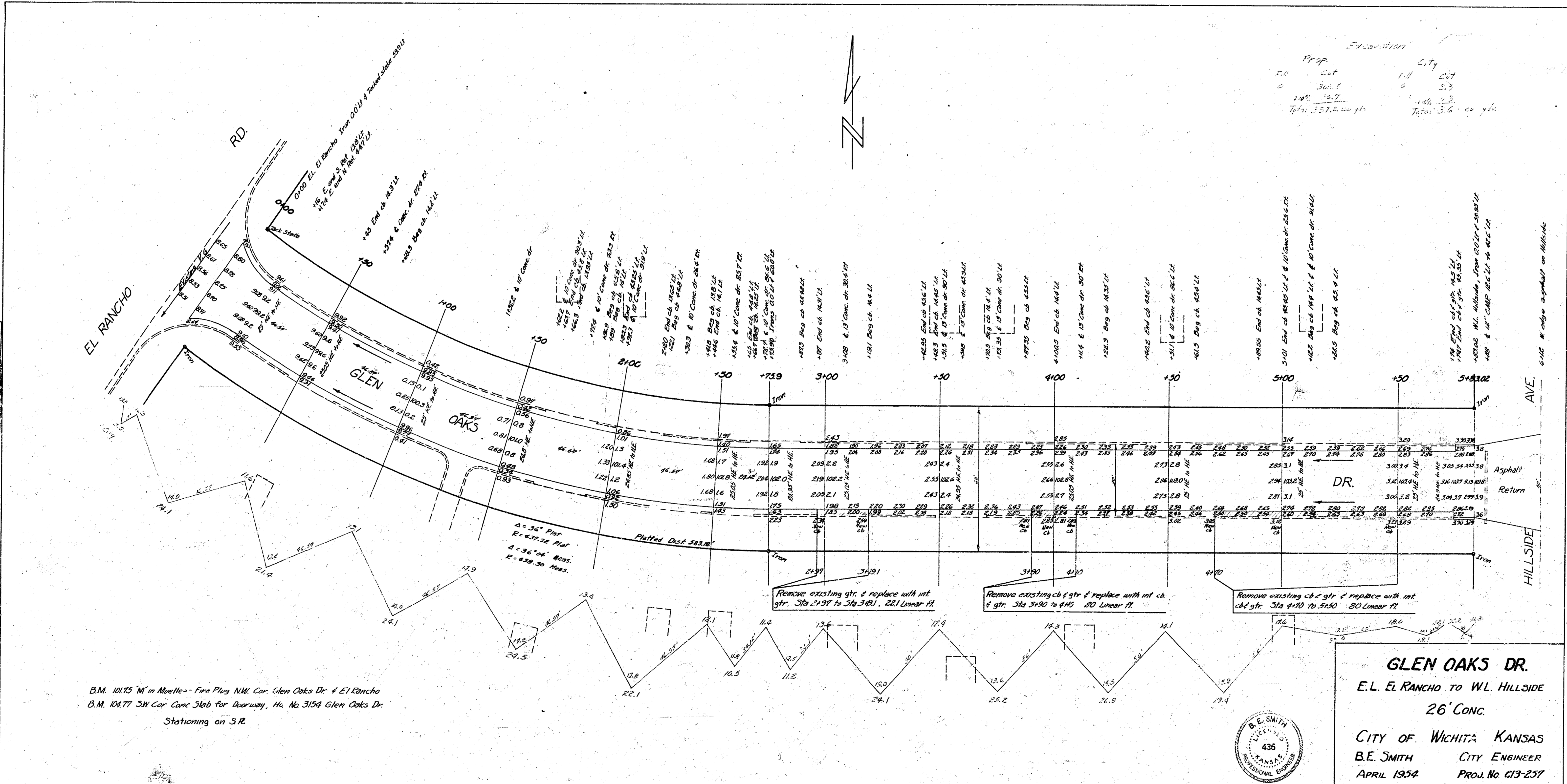


Survey 25
 Exp. 44
 Checked 37



B.M. 10125 N in Muelle - Fire Plug NW Cor. Glen Oaks Dr. & El Rancho
 B.M. 10477 SW Cor. Conc. Slab for Driveway, 1/4 Sec. 3154 Glen Oaks Dr.
 Stationing on S.R.



GLEN OAKS DR.
 E.L. EL RANCHO TO W.L. HILLSIDE
 26' CONC.
 CITY OF WICHITA KANSAS
 B.E. SMITH CITY ENGINEER
 APRIL 1934 PROJ. No. C13-257