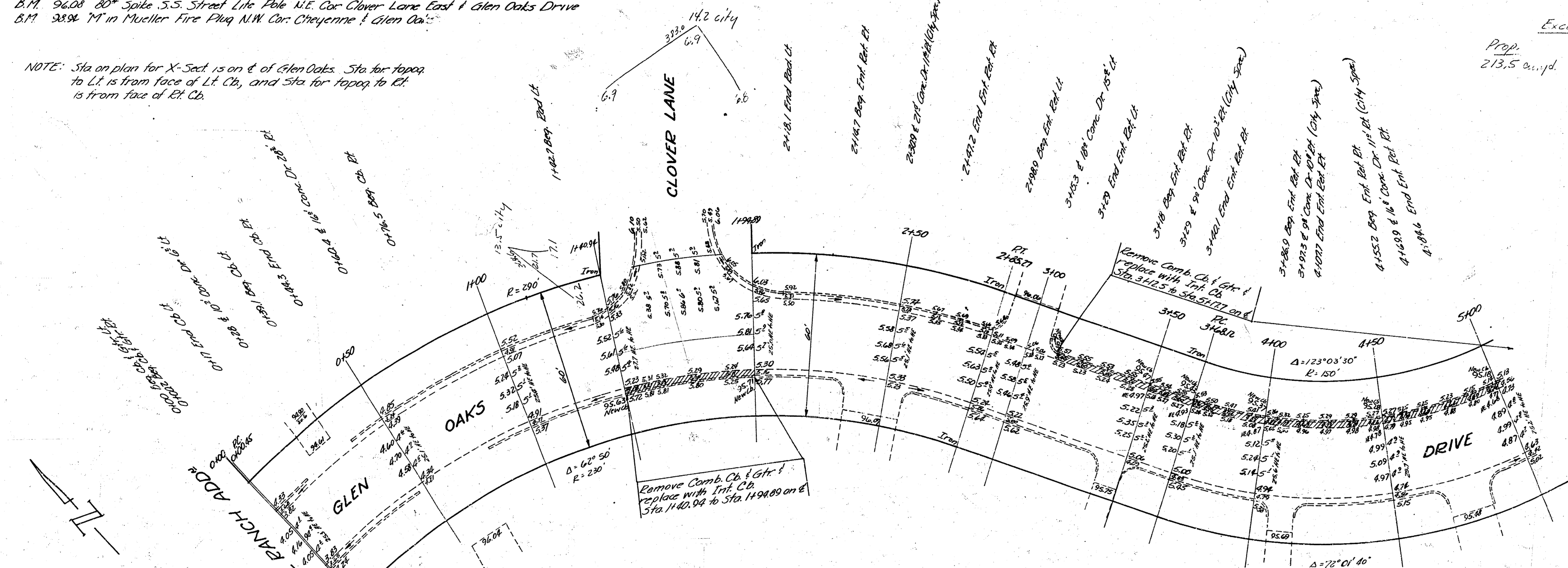


B.M. 96.08 80' Spike S.S. Street Lite Pole N.E. Cor. Clover Lane East & Glen Oaks Drive
 B.M. 3894 1" in Mueller Fire Plug N.W. Cor. Cheyenne & Glen Oaks

NOTE: Sta on plan for X-Section is on E. of Glen Oaks. Sta for topog to Lt. is from face of Lt. Cb. and Sta for topog to Rt. is from face of Rt. Cb.

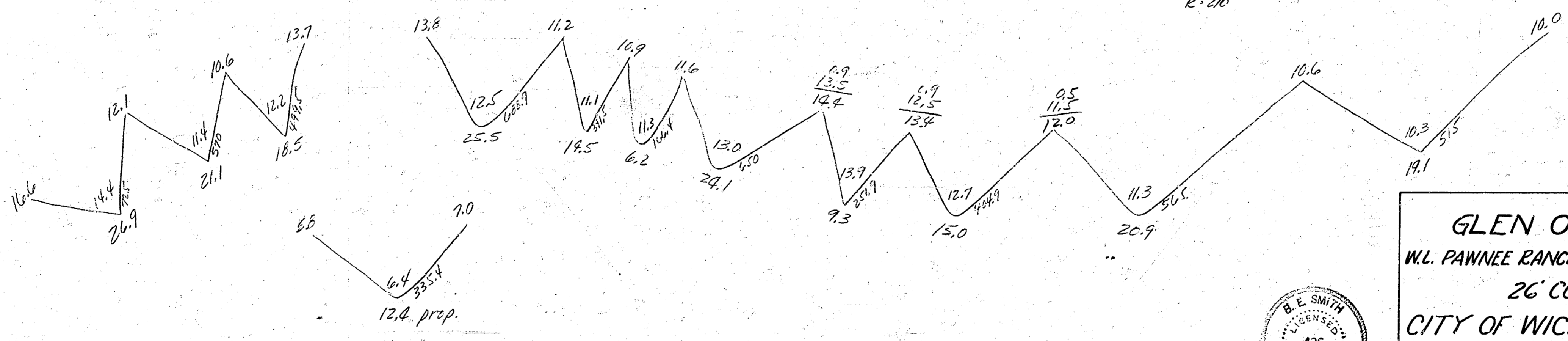
Survey by
 P.H.S. & C.C.
 Directed



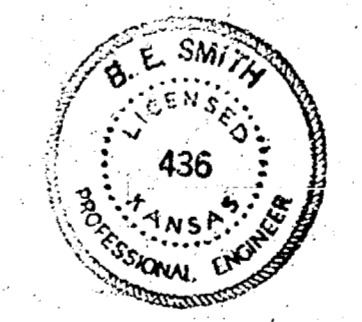
| Excav. | |
|--------------|-------------|
| Prop. | City |
| 213.5 cu.yd. | 27.7 cu.yd. |

Grand Total Excav.

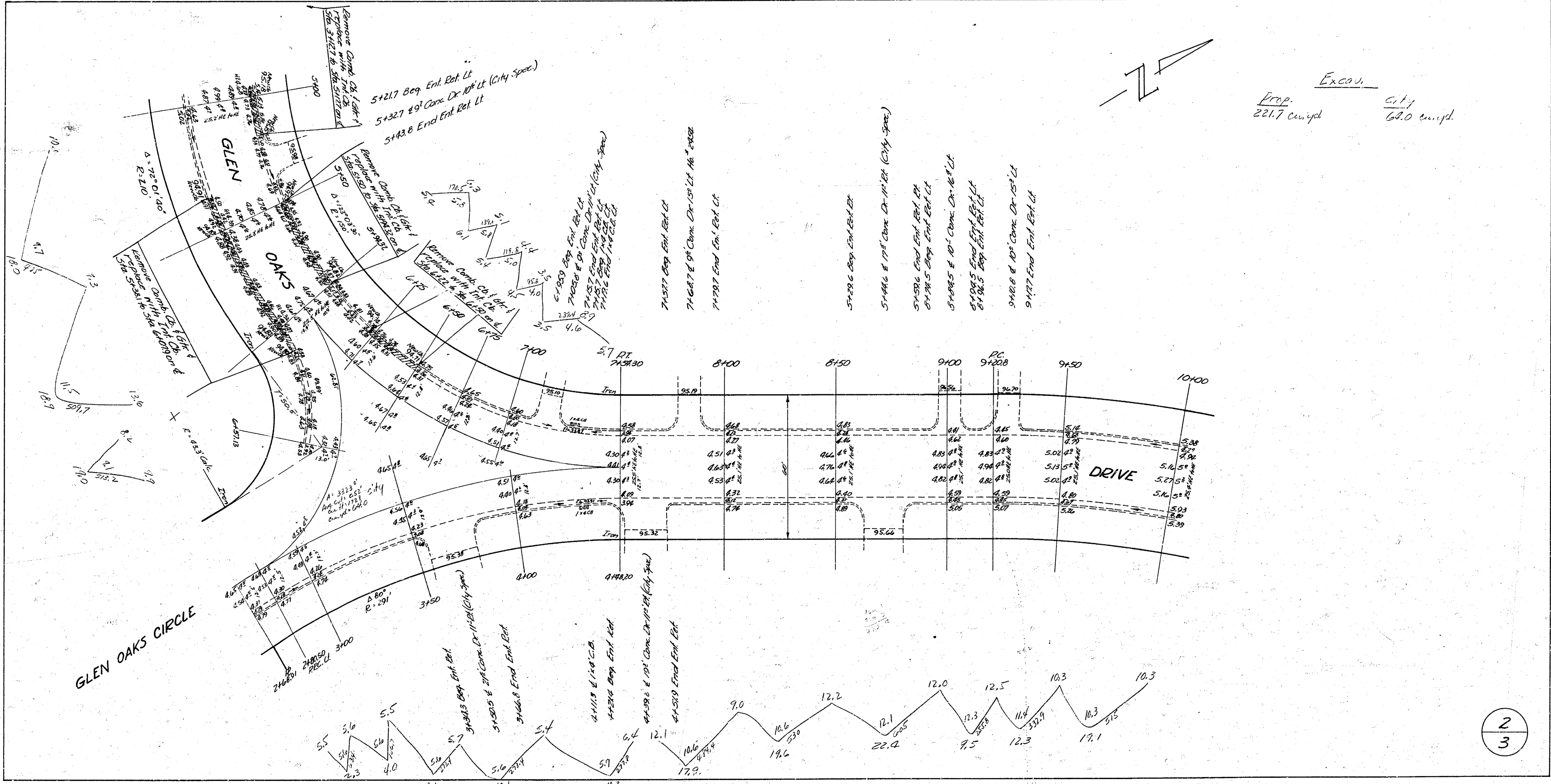
| | |
|-------|--------------------|
| Prop. | City |
| 213.5 | 27.7 |
| 221.7 | 64.0 |
| 123.3 | 71.7 |
| 557.0 | 163.4 |
| 412.7 | 9.3 |
| 7661 | 614.9 cu.yd. |
| | Total 100.7 cu.yd. |



1
3



GLEN OAKS DR.
 W.L. PAWNEE RANCH ADD. - W.L. CHEYENNE
 26' CONC.
 CITY OF WICHITA, KANS.
 B.E. SMITH CITY ENGINEER
 JULY 1953 PROJ. NO. C15-108



2
3

