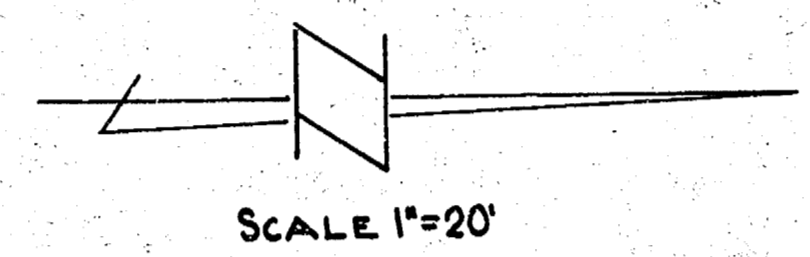


BM 100.76 '1' on Corner Lot N.W. Cor. Gold & Levey



STATIONING ON W.P.L.

CITY	PROPERTY
2.2	2.9
20.9	16.9
<u>23.3</u>	<u>15.0</u>
-10.90	8.5
2.3	7.3
	7.2
	3.0
	0.7
	2.6
	13.5
	13.9
	<u>85.7</u>
	2.6
	<u>94.3 cu yds. Etc.</u>

Survey M/G. 11/15/51
 Plan No. 1172
 City of Wichita, Kansas

GOLD AVE.
 SL CLARK AVE TO S LEVEY AVE.
 30" Conc. & Cb.
 CITY OF WICHITA, KANSAS
 L.K. WHITE
 CITY ENGINEER
 OCT. B., 1951
 PROJ. NO. C11-172

